

UNIT TYPE - A1	UNIT TYPE - A1 ALT
TOTAL # OF UNITS ON SITE: 29	TOTAL # OF UNITS ON SITE: 29
TOTAL NUMBER OF BEDROOMS: 1	TOTAL NUMBER OF BEDROOMS: 1
TOTAL NUMBER OF BATHS: 1	TOTAL NUMBER OF BATHS: 1
OCCUPANCY PER UNIT: 4	OCCUPANCY PER UNIT: 4
TRAVEL DISTANCE (IN UNIT) = 40'-0"	TRAVEL DISTANCE (IN UNIT) = 40'-0"
<b>SQUARE FOOTAGE DATA</b>	
NET ACSF: 644 SF	NET ACSF: 644 SF
PATIO/BALCONY: 44 SF	PATIO/BALCONY: 44 SF
<b>TOTAL GSF: 688 GSF</b>	<b>TOTAL GSF: 688 GSF</b>

- ### GENERAL UNIT NOTES
- PLEASE NOTE - MIRRORRED VERSION OF UNIT LAYOUTS MAY BE USED IN BUILDING PLANS - REFER TO A-4.00 DRAWINGS
  - REFER TO MEP DWGS FOR LOCATION OF SMOKE, CO & FIRE DETECTORS
  - REFER ALSO TO SHEET A1.02 FOR ABBREVIATIONS AND GENERAL PROJECT NOTES
  - REFER ALSO TO SHEET A1.03 FOR TYPICAL WALL ASSEMBLIES
  - REFER ALSO TO THE A2.00 SERIES SHEET SHEETS FOR DOOR AND WINDOW SCHEDULES & DETAILS
  - ALL INTERIOR DOORS SHALL ALLOW A MINIMUM OF 7' AIRFLOW FOR RETURN AIR AT BOTTOM OF DOOR
  - EXTERIOR WINDOWS SHALL MEET ALL FEDERAL, STATE & LOCAL GLAZING STANDARDS. SLIDING GLASS DOORS SHALL NOT HAVE PIN LOCKS OR CHARLEY BARS
  - PER IBC-2018 TABLE 1002.2(1), ONLY STORES PERMITTED TO HAVE A SINGLE EXIT ARE ALSO REQUIRED TO HAVE EMERGENCY ESCAPE OPENINGS. WHEN REQUIRED, EMERGENCY ESCAPE OPENINGS TO BE PROVIDED IN BEDROOMS SHALL HAVE A MINIMUM OF ONE OPENING WITH 20" NET CLEAR WIDTH, 24" NET CLEAR HEIGHT, 5.7 SQFT. NET CLEAR OPENABLE AREA AND SHALL BE 44" MAXIMUM FROM FINISH FLOOR TO TOP OF SILL. ALL OTHER UNITS WITH AT LEAST TWO DISTINCT EXIT PATHS FROM THE UNIT ENTRY DOOR DO NOT REQUIRE EMERGENCY ESCAPE OPENINGS
  - WALL TYPES AND NOTES STATING "CLEAR" ARE FROM FACE OF FINISH TO FACE OF FINISH OR CABINET FIXTURE
  - ALL DIMENSIONS ARE TO FACE OF STUD OR CENTERLINE OF OPENING, U.N.O. FOR DIMENSIONING PURPOSES. TYPICAL STUD WALLS ARE DIMENSIONED AS 5/8" THICK AND PLUMBING WALLS AS 5/8" THICK
  - ALL "NON DIMENSIONED" DOOR LOCATIONS SHALL BE LOCATED MIN 3" (DOUBLE STUD JAMB) FROM CORNER
  - REFER ALSO TO UNIT PLANS AND STRUCTURAL DRAWINGS FOR 2X8 WALL LOCATIONS
  - PROVIDE MOISTURE RESISTANT GYPSUM DRYWALL AT ALL BATHROOM WALLS
  - IN LEED PROJECTS DRYWALL NEEDS TO BE NON PAPER BASED
  - PROVIDE SOUND BATTS IN ALL CORRIDOR, TENANT SEPARATION, LAUNDRY ROOM, PLUMBING, AND HVAC CLOSET WALLS
  - REFER TO STRUCTURAL DRAWINGS FOR SHEARWALL AND BEARING WALL LOCATIONS
  - VERTICAL MECHANICAL CHASES WITHIN UNITS ARE TO BE FIRE STOPPED PER LOCAL REQUIREMENTS
  - ALL ANGLES ARE 45° TO HORIZONTAL & VERTICAL, DIRECTIONS, UNLESS NOTED OTHERWISE, TYPICAL AT ALL UNITS
  - ALL DIMENSIONS AND NOTES STATING "CLEAR" ARE FROM FACE OF FINISH TO FACE OF FINISH OR CABINET FIXTURE
  - REFER TO A1.03 AS A REFERENCE FOR UNIT FAIR HOUSING ACT GUIDELINES (FHAG) REQUIREMENTS AND OTHER ACCESSIBILITY REQUIREMENTS
  - TOWEL BARS ARE TO BE MOUNTED AT 40" AFF AS INDICATED ON PLANS. TOILET PAPER DISPENSERS AT 18" AFF UNLESS NOTED OTHERWISE (IN TYPE A UNITS, MOUNT 7" HORIZONTALLY BEYOND FRONT EDGE OF WC)
  - INTERIOR ELEVATIONS ARE FOR SCHEMATIC CABINET LAYOUT ONLY. CONTRACTOR TO VERIFY ALL DIMENSIONS. PROVIDE FILLERS AS REQUIRED. FILLERS SHALL BE A MAXIMUM OF 3"
  - VANITY MIRRORS TO BE 42" HIGH AND 2" LESS THAN THE VANITY WIDTH (TYP) AND TO BE MOUNTED WITH THE BOTTOM OF THE REFLECTING SURFACE NO MORE THAN 40" AFF IN ANSI TYPE A UNITS
  - VERIFY ALL FIXTURE DIMENSIONS WITH ACTUAL TUBSHOWER PROVIDED. GC TO COORDINATE FINAL FRAMING WITH TUBSHOWER MFR AND DETAILS. INSTALL CONTINUOUS BASE LAYER OF GYPSUM AT ALL RATED WALLS BEFORE TUBSHOWER FIXTURE INSTALLATION ON RATED WALLS
  - PROVIDE SOLID BLOCKING IN ALL WALLS FOR FUTURE INSTALLATION OF GRAB BARS AS SHOWN ON A1.03, OR PROVIDE AN ALTERNATIVE MEANS OF REINFORCING THE CAVITY BETWEEN THE TUBSHOWER ENCLOSURES AND THE WALL
  - SEE ARCHITECTURAL ELEVATION, MEP AND STRUCTURAL DRAWINGS FOR EXTERIOR FEATURES THAT MAY REQUIRE BLOCKING OR OTHER CONSIDERATIONS SPECIFIC TO THE UNIT LOCATION IN THE BUILDING, SUCH AS BUT NOT LIMITED TO ATTACHED STORAGE, LIGHTING, AWNINGS, CANOPIES, TRELLISES, SHUTTERS, FIXTURES, BULDOZERS, CORNICES, RAILINGS, LANDSCAPE FEATURES AND ADJACENT ATTACHED STRUCTURES
  - PROVIDE A HIGH OUTLET AT 48" AFF FOR WALL MOUNT TV IN LIVING AND BEDROOMS. PROVIDE 2x10 BLOCKING FOR TV MOUNTING
  - ALL EXTERIOR SLABS TO SLOPE DOWN MIN 1/8" PER 1'-0" TO EXTERIOR EDGE OF SLAB. LIGHT BROOM FINISH AT SLOPED SURFACES. VERIFY WITH STRUCTURE
  - REFER TO INTERIOR DESIGNER DRAWINGS FOR EXACT MOLDING LOCATIONS, SIZES AND FINISHES
  - ALL GROUND FLOOR WINDOWS FACING AND OPEN TO THE POOL COURTYARD MUST BE LIMITED TO 4" OPENING
  - ALL WINDOWS IN GROUP R3 AND R3 OCCUPANCIES LOCATED ABOVE THE FIRST FLOOR WITH SILLS BEL. 20" AFF. MUST HAVE FALL PROTECTION IN ACCORDANCE WITH IBC SECTION 1015.8 (LIMITING OPENING TO 4" AND/OR CONTROL DEVICES PER ASTM F 2086)
  - ALL FIRST FLOOR PATIOS AND BALCONIES OPENING TO THE POOL DECK AREA SHALL HAVE 4" HIGH RAILINGS
  - ALTHOUGH SYMBOLS HAVE BEEN REMOVED FOR CLARITY, ALL FLOOR FINISHES SHALL EXTEND UNDER SHELVING, APPLIANCES, ALL RAISED COUNTERS, DESKS AND ANY CABINETS INDICATED WITH "REMOVABLE FRONTS"
  - ACCESSIBLE DIMENSIONS LABELED "CLR" MIN "MAX" ARE FROM FINISHED FACE TO FINISHED FACE
  - THE 18 INCHES FROM THE CENTERLINE OF THE TOILET TO THE FINISHED WALL OR ADJACENT TUBSHOWER IS AN ABSOLUTE MEASUREMENT

### SYMBOL LEGEND - UNIT PLANS

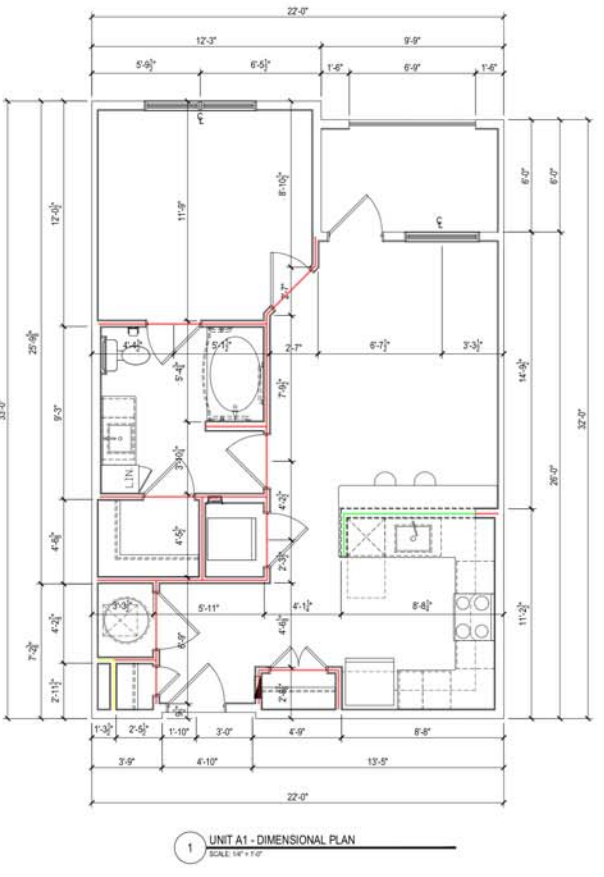
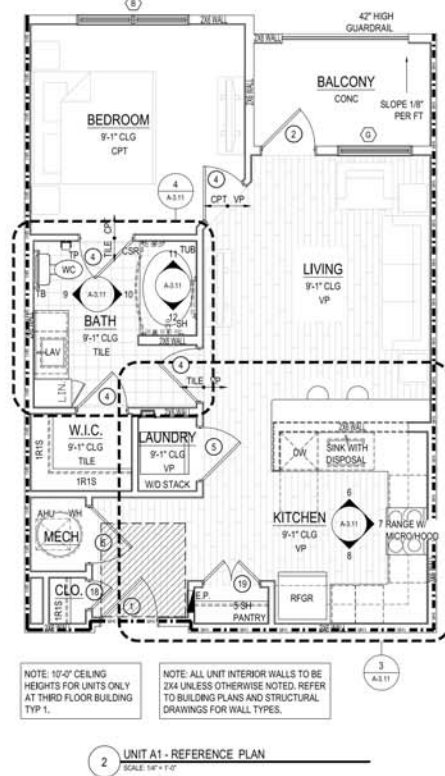
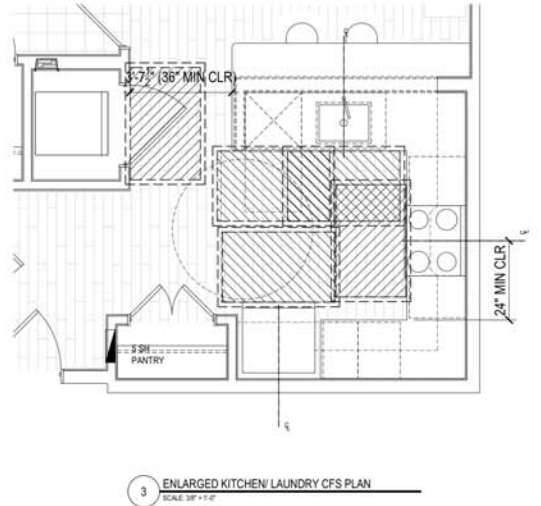
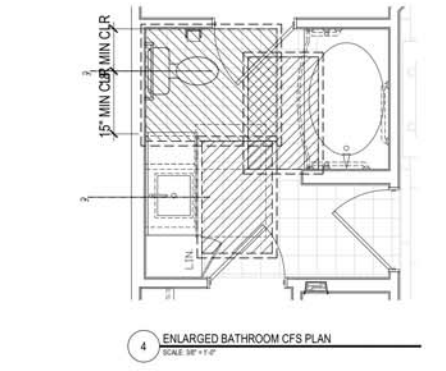
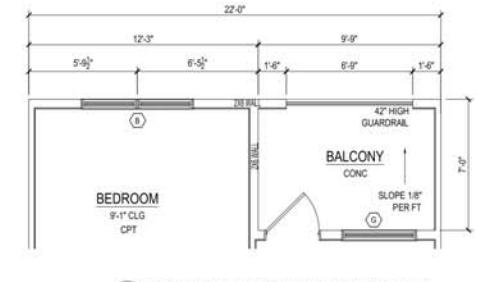
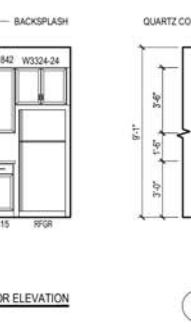
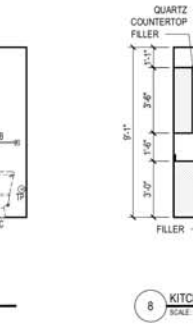
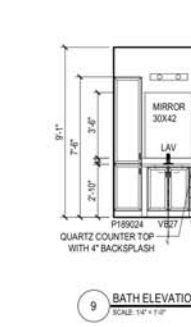
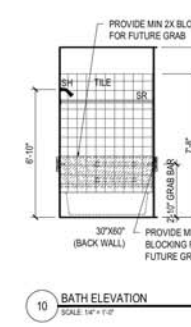
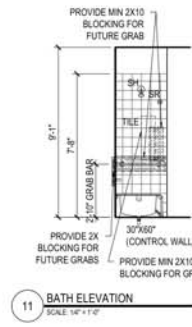
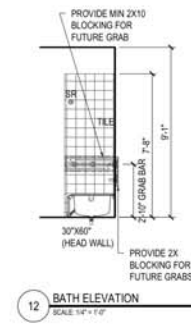
	WINDOW TAG SYMBOL		CLEAR FLOOR SPACE WITH 2" TOLERANCE AREA. REFER TO NOTES FOR REQUIRED DIMENSIONS
	DOOR TAG SYMBOL		DROPPED SOFFITS (SEE PLAN FOR SLOPE AND LOCATION)
	DETAIL SECTION TAG		1 HOUR RATED WALLS
	DETAIL REFERENCE TAG		ELECTRIC PANEL
	INTERIOR ELEVATION SYMBOL		FIRE EXTINGUISHER - PROVIDE 2A:10B:C IN EACH UNIT (COORD W/OWNER) AND IN SHELTERWAY CORRIDORS OR AS APPROVED BY AHJ
	PARTITION WALL TAG REF A1.03		
	FLOORING TRANSITION TAG		

AHJ	= AIR HANDLER UNIT	LN	= LINEN CABINET	TR	= TOWEL RING
CO	= CASED OPENING	MC	= MEDICINE CABINET @ 48" AFF	V	= VINYL
CPT	= CARPET	P	= PANTRY	VP	= VINYL PLANK
CSR	= CURVED SHOWER ROD	RH	= ROBE HOOK	W	= WASHER
CT	= CERAMIC TILE	SH	= SHOWER HEAD	WD	= WASHER / DRYER
D	= CLOTHES DRYER	SR	= SHOWER ROD	WH	= WATER HEATER
DWR	= DRAINER	SRO	= SHEETROCK OPENING	WS	= WORKSPACE
DW	= DISHWASHER	T	= TEMPERED GLASS	# S	= # OF SHELVES
GYPSO	= GYPSUM BOARD	TB	= TOWEL BAR	1R1S	= DENOTES 1 ROD / 1 SHELF
KS	= KNEE SPACE	TP	= TOILET PAPER DISPENSER	2R2S	= DENOTES 2 RODS / 2 SHELVES

(UNIT A1) GWB INTERIOR WALL  
 (UNIT A1) GWB INTERIOR FURRING WALL  
 (UNIT A1) GWB INTERIOR UNDERCOUNTER WALL

72.5 FT  
 3.5 FT  
 9.3 FT



Drawn By: HPA  
 Checked By: MK  
 Date Plotted: 29 April 2022  
 Issue Date:

Issue No.	DATE	COMMENTS

© 2018 by Humphreys & Partners Architects / Florida, L.L.C. All Rights Reserved.  
 The architectural works depicted herein are the sole property of Humphreys & Partners Architects, L.P. and may not be constructed or used without its express written permission. No permission to modify or reproduce any of the architectural works, including without limitation the construction of any building, is expressed or should be implied from delivery of preliminary drawings or unsealed construction drawings. Permission to construct the building depicted in sealed construction drawings is expressly conditioned on the full and timely payment of all fees otherwise due Humphreys & Partners Architects, L.P. and, in the absence of any written agreement to the contrary, is limited to a one-time use on the site indicated on these plans.

**HUMPHREYS & PARTNERS ARCHITECTS / FLORIDA LLC**  
 541 EAST HICRATO AVE., STE 100, MAITLAND, FL 32751  
 (407) 339-3023 • (407) 339-6208 FAX  
 DALLAS, ORLANDO, MIAMI, SCOTTSDALE, BOCA RATON  
 NEW YORK, TORONTO, CHENNAI, DUBAI, HANOI, MONTREVIDEO  
 CERTIFICATE #AA 1000327

SHEET CONTENTS  
 UNIT A1 & A1 ALT PLAN & INTERIOR ELEVATION  
 SHEET NO.  
**A-3.11**  
 2021316

**UNIT TYPE - A2**  
 TOTAL # OF UNITS ON SITE:  
 TOTAL NUMBER OF BEDROOMS: 1  
 TOTAL NUMBER OF BATH: 1  
 OCCUPANCY PER UNIT: 4  
 TRAVEL DISTANCE (IN UNIT) = 35'-10"

**SQUARE FOOTAGE DATA**  
 NET ACSF: 745 SF  
 PATIO/BALCONY: 77 SF  
 TOTAL GSF: 822 GSF

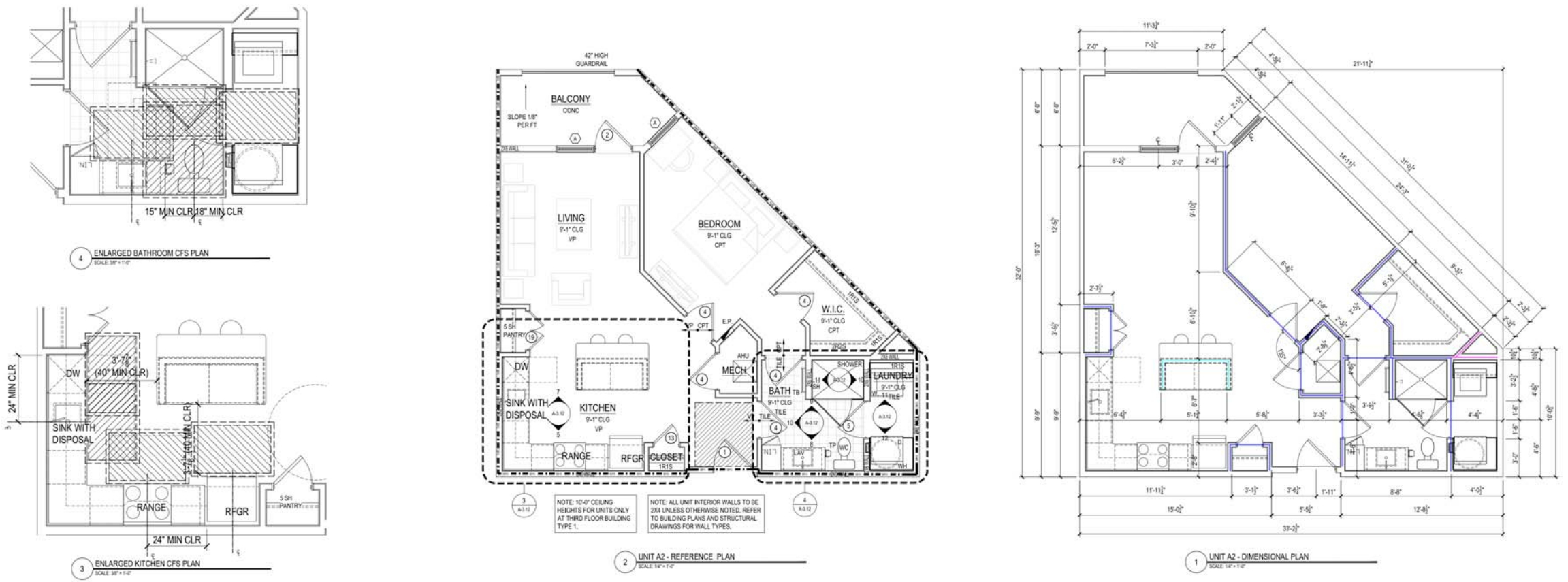
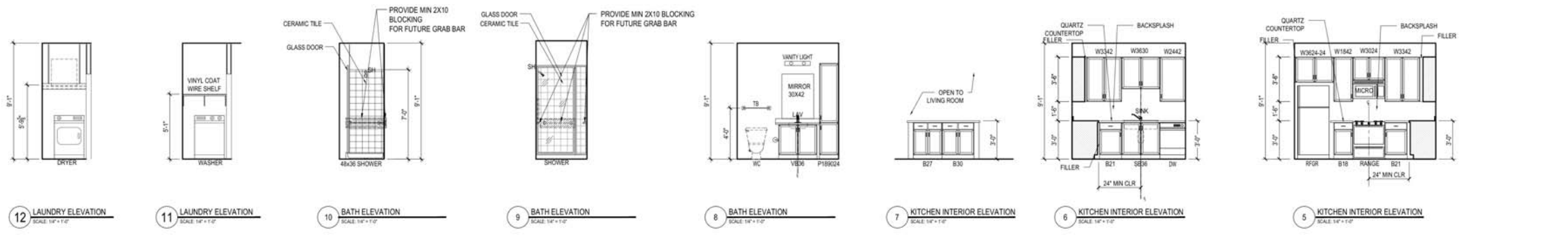
- GENERAL UNIT NOTES**
- PLEASE NOTE - MIRRORED VERSION OF UNIT LAYOUTS MAY BE USED IN BUILDING PLANS - REFER TO A-4.00 DRAWINGS
  - REFER TO MEP DWGS FOR LOCATION OF SMOKE, CO & FIRE DETECTORS
  - REFER ALSO TO SHEET A1.00 FOR ABBREVIATIONS AND GENERAL PROJECT NOTES
  - REFER ALSO TO SHEET A1.00 FOR TYPICAL WALL ASSEMBLIES
  - REFER ALSO TO THE A2.00 SERIES SHEET SHEETS FOR DOOR AND WINDOW SCHEDULE & DETAILS
  - ALL INTERIOR DOORS SHALL ALLOW A MINIMUM OF 7' AIRFLOW FOR RETURN AIR AT BOTTOM OF DOOR
  - EXTERIOR WINDOWS SHALL MEET ALL FEDERAL, STATE & LOCAL GLAZING STANDARDS. SLIDING GLASS DOORS SHALL NOT HAVE PIN LOCKS OR CHARLEY BARS
  - PER IBC-2018 TABLE 1022.2(1), ONLY STORES PERMITTED TO HAVE A SINGLE EXIT ARE ALSO REQUIRED TO HAVE EMERGENCY ESCAPE OPENINGS WHEN REQUIRED. EMERGENCY ESCAPE OPENINGS TO BE PROVIDED IN BEDROOMS SHALL HAVE A MINIMUM OF ONE OPENING WITH 20" NET CLEAR WIDTH, 24" NET CLEAR HEIGHT, 5.7 SQFT. NET CLEAR OPENABLE AREA AND SHALL BE 44" MAXIMUM FROM FINISH FLOOR TO TOP OF SILL. ALL OTHER UNITS WITH AT LEAST TWO DISTINCT EXIT PATHS FROM THE UNIT ENTRY DOOR DO NOT REQUIRE EMERGENCY ESCAPE OPENINGS
  - WALL TYPES AND UNIT PERIMETER ARE INDICATED ON THE A-3.00 UNIT PLANS. REFER TO A-4.00 BUILDING PLANS FOR PERIMETER WALL TYPES (UNIT TO UNIT, UNIT TO CORRIDOR, UNIT TO EXTERIOR)
  - ALL DIMENSIONS ARE TO FACE OF STUD OR CENTERLINE OF OPENING, U.N.D. FOR DIMENSIONING PURPOSES. TYPICAL STUD WALLS ARE DIMENSIONED AS 5/2" THICK AND PLUMBING WALLS AS 5/2" THICK
  - ALL "NON DIMENSIONED" DOOR LOCATIONS SHALL BE LOCATED MIN 3" (DOUBLE STUD JAMB) FROM CORNER
  - REFER ALSO TO UNIT PLANS AND STRUCTURAL DRAWINGS FOR 2X8 WALL LOCATIONS
  - PROVIDE MOISTURE RESISTANT GYPSUM DRYWALL AT ALL BATHROOM WALLS
  - IN LEED PROJECTS DRYWALL NEEDS TO BE NON PAPER BASED
  - PROVIDE SOUND BATTS IN ALL CORRIDOR, TENANT SEPARATION, LAUNDRY ROOM, PLUMBING, AND HVAC CLOSET WALLS
  - REFER TO STRUCTURAL DRAWINGS FOR SHEARWALL AND BEARING WALL LOCATIONS
  - VERTICAL MECHANICAL CHASES WITHIN UNITS ARE TO BE FIRE STOPPED PER LOCAL REQUIREMENTS
  - ALL ANGLES ARE 45° TO HORIZONTAL & VERTICAL, DIRECTIONS, UNLESS NOTED OTHERWISE, TYPICAL AT ALL UNITS
  - ALL DIMENSIONS AND NOTES STATING "CLR" ARE FROM FACE OF FINISH OR CABINET FIXTURE
  - REFER TO A1.00 AS A REFERENCE FOR UNIT FAIR HOUSING ACT GUIDELINES (FHAG) REQUIREMENTS AND OTHER ACCESSIBILITY REQUIREMENTS
  - ALL TOWEL BARS ARE TO BE MOUNTED AT 48" AFF AS INDICATED ON PLANS. TOILET PAPER DISPENSERS AT 33" AFF UNLESS NOTED OTHERWISE (IN TYPE A UNITS, MOUNT 7'-0" HORIZONTALLY BEYOND FRONT EDGE OF WC)
  - INTERIOR ELEVATIONS ARE FOR SCHEMATIC CABINET LAYOUT ONLY. CONTRACTOR TO VERIFY ALL DIMENSIONS. PROVIDE FILLERS AS REQUIRED. FILLERS SHALL BE A MAXIMUM OF 3"
  - VANITY MIRRORS TO BE 42" HIGH AND 2" LESS THAN THE VANITY WIDTH (TYP) AND TO BE MOUNTED WITH THE BOTTOM OF THE REFLECTING SURFACE NO MORE THAN 42" AFF IN ANSI TYPE A UNITS
  - VERIFY ALL FIXTURE DIMENSIONS WITH ACTUAL TUBSHOWER PROVIDED. GC TO COORDINATE FINAL FRAMING WITH TUBSHOWER MFR AND DETAILS. INSTALL CONTINUOUS BASE LAYER OF GYPSUM AT ALL RATED WALLS BEFORE TUBSHOWER FIXTURE INSTALLATION ON RATED WALLS
  - PROVIDE SOLID BLOCKING IN ALL WALLS FOR FUTURE INSTALLATION OF GRAB BARS AS SHOWN ON A1.00, OR PROVIDE AN ALTERNATIVE MEANS OF REINFORCING THE CAVITY BETWEEN THE TUBSHOWER ENCLOSURES AND THE WALL
  - SEE ARCHITECTURAL ELEVATION, MEP AND STRUCTURAL DRAWINGS FOR EXTERIOR FEATURES THAT MAY REQUIRE BLOCKING OR OTHER CONSIDERATIONS SPECIFIC TO THE UNIT LOCATION IN THE BUILDING, SUCH AS BUT NOT LIMITED TO ATTACHED STORAGE, LIGHTING, AWNINGS, CANOPIES, TRELLISES, SHUTTERS, FIXTURES, BULDOZERS, CORNICES, RAILINGS, LANDSCAPE FEATURES AND ADJACENT ATTACHED STRUCTURES
  - PROVIDE A HIGH OUTLET AT 48" AFF FOR WALL MOUNT TV IN LIVING AND BEDROOMS. PROVIDE 2x10 BLOCKING FOR TV MOUNTING
  - ALL EXTERIOR SLABS TO SLOPE DOWN MIN 1/2" PER 1'-0" TO EXTERIOR EDGE OF SLAB. LIGHT BROOM FINISH AT SLOPED SURFACES. VERIFY WITH STRUCTURE
  - REFER TO INTERIOR DESIGNER ROOM FINISH SCHEDULE AND SOM FOR FINISHES. FOR ADDITIONAL ROOM FINISH NOTES
  - REFER TO INTERIOR DESIGNER DRAWINGS FOR EXACT MOLDING LOCATIONS, SIZES AND FINISHES
  - ALL GROUND FLOOR WINDOWS PACKED AND OPEN TO THE POOL COURTYARD MUST BE LIMITED TO 4' OPENING
  - ALL WINDOWS IN GROUP R3 AND R3 OCCUPANCIES LOCATED ABOVE THE FIRST FLOOR WITH SILLS BELOW 36" AFF. MUST HAVE FALL PROTECTION IN ACCORDANCE WITH IBC SECTION 1015.8 (LIMITING OPENING TO 4' AND/OR CONTROL DEVICES PER ASTM F 2096)
  - ALL FIRST FLOOR PATIOS AND BALCONIES OPENING TO THE POOL DECK AREA SHALL HAVE 48" HIGH RAILINGS
  - ALTHOUGH SYMBOLS HAVE BEEN REMOVED FOR CLARITY, ALL FLOOR FINISHES SHALL EXTEND UNDER SHELVING, APPLIANCES, ALL RAISED COUNTERS, DESKS AND ANY CABINETS INDICATED WITH "REMOVABLE FRONTS"
  - ACCESSIBLE DIMENSIONS LABELED "CLR" MIN "MAX" ARE FROM FINISHED FACE TO FINISHED FACE
  - THE 18 INCHES FROM THE CENTERLINE OF THE TOILET TO THE FINISHED WALL OR ADJACENT TUBSHOWER IS AN ABSOLUTE MEASUREMENT

**SYMBOL LEGEND - UNIT PLANS**

(X) WINDOW TAG SYMBOL	(X) DOOR TAG SYMBOL	(X) CLEAR FLOOR SPACE WITH 2" TOLERANCE AREA
(X) DETAIL SECTION TAG	(X) DETAIL REFERENCE TAG	(X) DROPPED SOFFITS (SEE PLAN FOR SLOPE AND LOCATION)
(X) INTERIOR ELEVATION SYMBOL	(X) PARTITION WALL TAG REF A1.00	(X) 1 HOUR RATED WALLS
(X) FLOORING TRANSITION TAG	(X) AIR HANDLER UNIT	(X) LINEN CABINET
(X) CASED OPENING	(X) MEDICINE CABINET @ 48" AFF	(X) TOWEL RING
(X) CARPET	(X) PANTRY	(X) VINYL
(X) CURVED SHOWER ROD	(X) ROBE HOOK	(X) VINYL PLANK
(X) CERAMIC TILE	(X) SHOWER HEAD	(X) WASHER / DRYER
(X) CLOTHES DRYER	(X) SHOWER ROD	(X) WATER HEATER
(X) DRAWER	(X) SHEETROCK OPENING	(X) WORKSPACE
(X) DISHWASHER	(X) TEMPERED GLASS	(X) # OF SHELVES
(X) GYPSUM BOARD	(X) TOWEL BAR	(X) DENOTES 1 ROD / 1 SHELF
(X) KNEE SPACE	(X) TOILET PAPER DISPENSER	(X) DENOTES 2 RODS / 2 SHELVES

**(UNIT A2) GWB INTERIOR WALL**  
**(UNIT A2) GWB INTERIOR FURRING WALL**  
**(UNIT A2) GWB INTERIOR UNDERCOUNTER WALL**

**86.7 FT**  
**6.5 FT**  
**9.7 FT**



Drawn By: HPA  
 Checked By: MK  
 Date Plotted: 29 April 2022  
 Issue Dates:  
 Issue for Pricing / Bidding:  
 Issue for Permit Application:  
 Issue for Construction:  
 Revisions:  

#	DATE	COMMENTS

© 2018 by Humphreys & Partners Architects / Florida L.L.C. All Rights Reserved  
 The architectural works depicted herein are the sole property of Humphreys & Partners Architects, L.P. and may not be constructed or used without its express written permission. No permission to modify or reproduce any of the architectural works, including without limitation the construction of any building, is expressed or should be implied from delivery of preliminary drawings or unsealed construction drawings. Permission to construct the building depicted in sealed construction drawings is expressly conditioned on the full and timely payment of all fees otherwise due Humphreys & Partners Architects, L.P. and, in the absence of any written agreement to the contrary, is limited to a one-time use on the site indicated on these plans.

**HUMPHREYS & PARTNERS ARCHITECTS / FLORIDA LLC**  
 541 EAST HICRATIO AVE., STE 100, MAITLAND, FL 32751  
 (407) 339-3023 • (407) 339-8288 FAX  
 DALLAS, ORLANDO, MIAMI, SELEPHANTON, TAMPA, FLORIDA  
 NEW YORK, SCOTTSDALE, ARIZONA  
 TORONTO, CHENNAI, DUBAI, HANOI, MONTREVIDEO  
 CERTIFICATE #AA 000327

SHEET CONTENTS:  
**UNIT A2 PLANS & INTERIOR ELEVATION**  
 SHEET NO.  
**A-3.12**

90% CD SET - 04/29/2022  
 2021316

**UNIT TYPE - B1**  
 TOTAL # OF UNITS ON SITE:  
 TOTAL NUMBER OF BEDROOMS: 2  
 TOTAL NUMBER OF BATH: 2  
 OCCUPANCY PER UNIT: 6  
 TRAVEL DISTANCE (IN UNIT) = 43'-10"

**SQUARE FOOTAGE DATA**  
 NET ACSF: 1027 SF  
 PATIO/BALCONY: 64 SF  
 TOTAL GSF: 1091 GSF

- GENERAL UNIT NOTES**
- PLEASE NOTE - MIRRORRED VERSION OF UNIT LAYOUTS MAY BE USED IN BUILDING PLANS - REFER TO A-4.00 DRAWINGS
  - REFER TO MEP DWGS FOR LOCATION OF SMOKE, CO & FIRE DETECTORS
  - REFER ALSO TO SHEET A1.00 FOR ABBREVIATIONS AND GENERAL PROJECT NOTES
  - REFER ALSO TO SHEET A1.00 FOR TYPICAL WALL ASSEMBLIES
  - REFER ALSO TO THE A2.00 SERIES SHEET SHEETS FOR DOOR AND WINDOW SCHEDULE & DETAILS
  - ALL INTERIOR DOORS SHALL ALLOW A MINIMUM OF 7' AIRFLOW FOR RETURN AIR AT BOTTOM OF DOOR
  - EXTERIOR WINDOWS SHALL MEET ALL FEDERAL, STATE & LOCAL GLAZING STANDARDS. SLIDING GLASS DOORS SHALL NOT HAVE PIN LOCKS OR CHARLEY BARS
  - PER IBC-2018 TABLE 1002.2(1), ONLY STORES PERMITTED TO HAVE A SINGLE EXIT ARE ALSO REQUIRED TO HAVE EMERGENCY ESCAPE OPENINGS. WHEN REQUIRED, EMERGENCY ESCAPE OPENINGS TO BE PROVIDED IN BEDROOMS SHALL HAVE A MINIMUM OF ONE OPENING WITH 20" NET CLEAR WIDTH, 24" NET CLEAR HEIGHT, 5.7 SQ.FT. NET CLEAR OPENABLE AREA AND SHALL BE 4" MAXIMUM FROM FINISH FLOOR TO TOP OF SILL. ALL OTHER UNITS WITH AT LEAST TWO DISTINCT EXIT PATHS FROM THE UNIT ENTRY DOOR DO NOT REQUIRE EMERGENCY ESCAPE OPENINGS
  - WALL TYPES INSIDE UNIT PERIMETER ARE INDICATED ON THE A-3.00 UNIT PLANS. REFER TO A-4.00 BUILDING PLANS FOR PERIMETER WALL TYPES (UNIT TO UNIT, UNIT TO CORRIDOR, UNIT TO EXTERIOR)
  - ALL DIMENSIONS ARE TO FACE OF STUD OR CENTERLINE OF OPENING, U.N.O. FOR DIMENSIONING PURPOSES. TYPICAL STUD WALLS ARE DIMENSIONED AS 5 1/2" THICK AND PLUMBING WALLS AS 5 1/2" THICK
  - ALL "NON DIMENSIONED" DOOR LOCATIONS SHALL BE LOCATED MIN 3" (DOUBLE STUD JAMB) FROM CORNER
  - REFER ALSO TO UNIT PLANS AND STRUCTURAL DRAWINGS FOR 2X8 WALL LOCATIONS
  - PROVIDE MOISTURE RESISTANT GYPSUM DRYWALL AT ALL BATHROOM WALLS
  - IN LEED PROJECTS DRYWALL NEEDS TO BE NON PAPER BASED
  - PROVIDE SOUND BATTS IN ALL CORRIDOR, TENANT SEPARATION, LAUNDRY ROOM, PLUMBING, AND HVAC CLOSET WALLS
  - REFER TO STRUCTURAL DRAWINGS FOR SHEARWALL AND BEARING WALL LOCATIONS
  - VERTICAL MECHANICAL CHASES WITHIN UNITS ARE TO BE FIRE STOPPED PER LOCAL REQUIREMENTS
  - ALL ANGLES ARE 45° TO HORIZONTAL & VERTICAL DIRECTIONS, UNLESS NOTED OTHERWISE, TYPICAL AT ALL UNITS
  - ALL DIMENSIONS AND NOTES STATING "CLEAR" ARE FROM FACE OF FINISH TO FACE OF FINISH OR CABINET FIXTURE
  - REFER TO A1.00 AS A REFERENCE FOR UNIT FAIR HOUSING ACT GUIDELINES (FHAG) REQUIREMENTS AND OTHER ACCESSIBILITY REQUIREMENTS
  - TOWEL BARS ARE TO BE MOUNTED AT 40" AFF AS INDICATED ON PLANS. TOILET PAPER DISPENSERS AT 18" AFF UNLESS NOTED OTHERWISE (IN TYPE A UNITS, MOUNT 7" HORIZONTALLY BEYOND FRONT EDGE OF WC)
  - INTERIOR ELEVATIONS ARE FOR SCHEMATIC CABINET LAYOUT ONLY. CONTRACTOR TO VERIFY ALL DIMENSIONS. PROVIDE FILLERS AS REQUIRED. FILLERS SHALL BE A MAXIMUM OF 3"
  - VANITY MIRRORS TO BE 42" HIGH AND 2" LESS THAN THE VANITY WIDTH (TYP) AND TO BE MOUNTED WITH THE BOTTOM OF THE REFLECTING SURFACE NO MORE THAN 45" AFF IN ANY TYPE A UNITS
  - VERIFY ALL FIXTURE DIMENSIONS WITH ACTUAL TUBSHOWER PROVIDED. GC TO COORDINATE FINAL FRAMING WITH TUBSHOWER MFR AND DETAILS. INSTALL CONTINUOUS BASE LAYER OF GYPSUM AT ALL RATED WALLS BEFORE TUBSHOWER FIXTURE INSTALLATION ON RATED WALLS
  - PROVIDE SOLID BLOCKING IN ALL WALLS FOR FUTURE INSTALLATION OF GRAB BARS AS SHOWN ON A1.00, OR PROVIDE AN ALTERNATIVE MEANS OF REINFORCING THE CAVITY BETWEEN THE TUBSHOWER ENCLOSURES AND THE WALL
  - SEE ARCHITECTURAL ELEVATION, MEP AND STRUCTURAL DRAWINGS FOR EXTERIOR FEATURES THAT MAY REQUIRE BLOCKING OR OTHER CONSIDERATIONS SPECIFIC TO THE UNIT LOCATION IN THE BUILDING, SUCH AS BUT NOT LIMITED TO ATTACHED STORAGE, LIGHTING, AWNINGS, CANOPIES, TRELLISES, SHUTTERS, FIXTURES, BULDOUTS, CORNICES, RAILINGS, LANDSCAPE FEATURES AND ADJACENT ATTACHED STRUCTURES
  - PROVIDE A HIGH OUTLET AT 48" AFF FOR WALL MOUNT TV IN LIVING AND BEDROOMS. PROVIDE 2x10 BLOCKING FOR TV MOUNTING
  - ALL EXTERIOR SLABS TO SLOPE DOWN MIN 1/8" PER 1'-0" TO EXTERIOR EDGE OF SLAB. LIGHT BROOM FINISH AT SLOPED SURFACES. VERIFY WITH STRUCTURE
  - REFER TO INTERIOR DESIGNER ROOM FINISH SCHEDULE AND SOM FOR FINISHES. FOR ADDITIONAL ROOM FINISH NOTES
  - REFER TO INTERIOR DESIGNER DRAWINGS FOR EXACT MOLDING LOCATIONS, SIZES AND FINISHES
  - ALL GROUND FLOOR WINDOWS FACING AND OPEN TO THE POOL COURTYARD MUST BE LIMITED TO 4" OPENING
  - ALL WINDOWS IN GROUP R1.2 AND R1.3 OCCUPANCIES LOCATED ABOVE THE FIRST FLOOR WITH SILLS BELOW 36" AFF, MUST HAVE FALL PROTECTION IN ACCORDANCE WITH IBC SECTION 1015.8 (LIMITING OPENING TO 4" AND/OR CONTROL DEVICES PER ASTM F 2096)
  - ALL FIRST FLOOR PATIOS AND BALCONIES OPENING TO THE POOL DECK AREA SHALL HAVE 48" HIGH RAILINGS
  - ALTHOUGH SYMBOLS HAVE BEEN REMOVED FOR CLARITY, ALL FLOOR FINISHES SHALL EXTEND UNDER SHELVING, APPLIANCES, ALL RAISED COUNTERS, DESKS AND ANY CABINETS INDICATED WITH "REMOVABLE FRONTS"
  - ACCESSIBLE DIMENSIONS LABELED "CL" OR "MIN" ARE FROM FINISHED FACE TO FINISHED FACE
  - THE 18 INCHES FROM THE CENTERLINE OF THE TOILET TO THE FINISHED WALL OR ADJACENT TUBSHOWER IS AN ABSOLUTE MEASUREMENT

**SYMBOL LEGEND - UNIT PLANS**

WINDOW TAG SYMBOL	CLEAR FLOOR SPACE WITH 2" TOLERANCE AREA REFER TO NOTES FOR REQUIRED DIMENSIONS
DOOR TAG SYMBOL	DROPPED SOFFITS (SEE PLAN FOR DEPTH AND LOCATION)
DETAIL SECTION TAG	1 HOUR RATED WALLS
DETAIL REFERENCE TAG	ELECTRIC PANEL
INTERIOR ELEVATION SYMBOL	FIRE EXTINGUISHER - PROVIDE 2A:10B:C IN EACH UNIT (COORD W/OWNER) AND IN BREAKZONES/CORRIDORS OR AS APPROVED BY AHJ
PARTITION WALL TAG REF A1.00	
FLOORING TRANSITION TAG	

AHU = AIR HANDLER UNIT	LN = LINEN CABINET	TR = TOWEL RING
CO = CASED OPENING	MC = MEDICINE CABINET @ 48" AFF	V = VINYL
CPT = CARPET	P = PANTRY	VP = VINYL PLANK
CSR = CURVED SHOWER ROOD	RH = ROBE HOOK	W = WASHER
CT = CERAMIC TILE	SH = SHOWER HEAD	WD = WASHER / DRYER
D = CLOTHES DRYER	SR = SHOWER ROD	WH = WATER HEATER
DWR = DRAINER	SRO = SHEETROCK OPENING	WS = WORKSPACE
DW = DISHWASHER	T = TEMPERED GLASS	# S = # OF SHELVES
GYPSO = GYPSUM BOARD	TB = TOWEL BAR	1R1S = DENOTES 1 ROD / 1 SHELF
KS = KNEE SPACE	TP = TOILET PAPER DISPENSER	2R2S = DENOTES 2 RODS / 2 SHELVES

Drawn By: HPA  
 Checked By: MK  
 Date Plotted: 29 April 2022  
 Issue Dates:

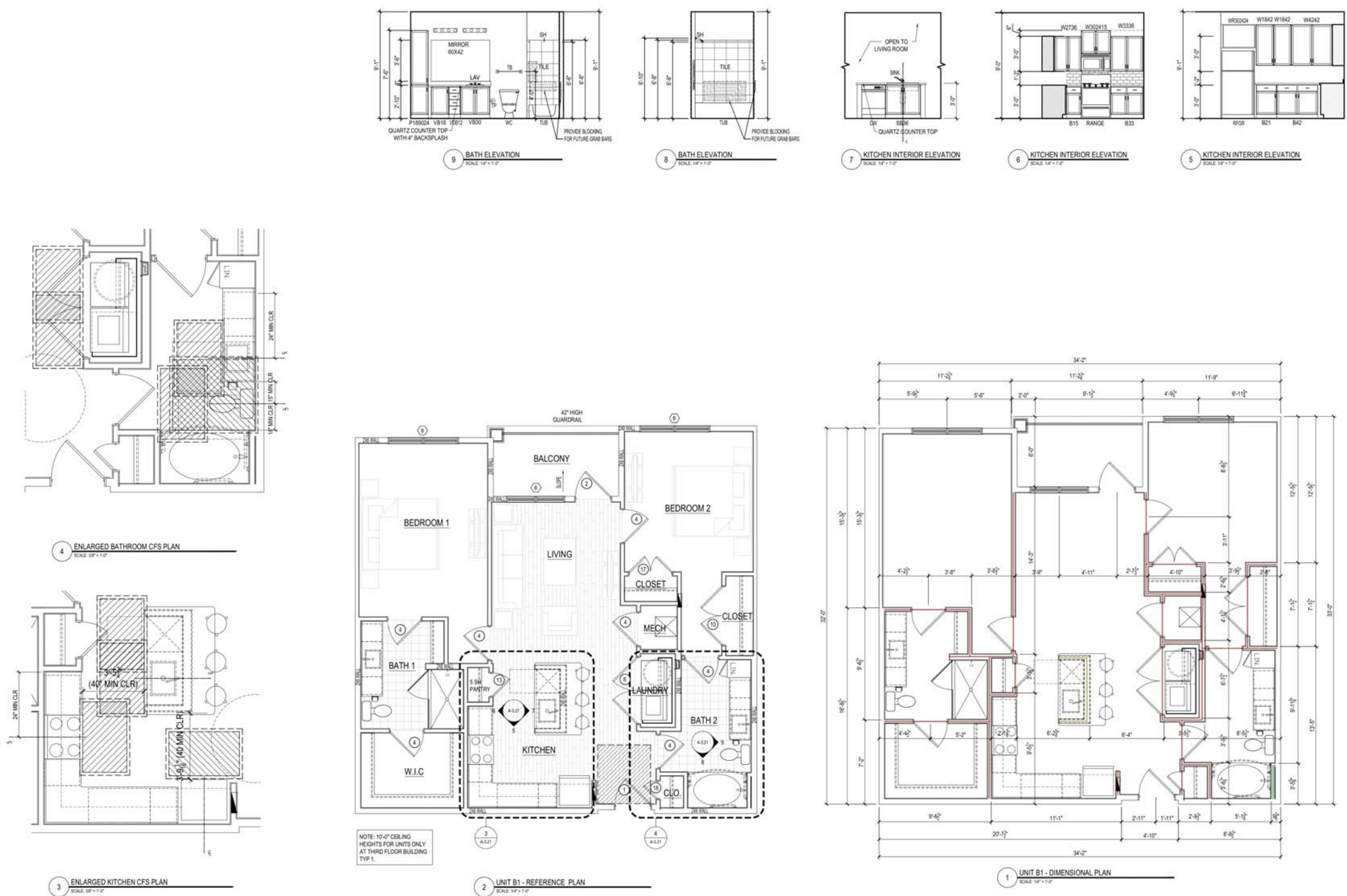
Issue No.	DATE	COMMENTS

Issue for Pricing / Bidding: \_\_\_\_\_  
 Issue for Permit Application: \_\_\_\_\_  
 Issue for Construction: \_\_\_\_\_

© 2016 by Humphreys & Partners Architects / Florida, L.L.C. All Rights Reserved.  
 The architectural works depicted herein are the sole property of Humphreys & Partners Architects, L.P. and may not be constructed or used without its express written permission. No permission to modify or reproduce any of the architectural works, including without limitation the construction of any building, is expressed or should be implied from delivery of preliminary drawings or unsealed construction drawings. Permission to construct the building depicted in sealed construction drawings is expressly conditioned on the full and timely payment of all fees otherwise due Humphreys & Partners Architects, L.P. and, in the absence of any written agreement to the contrary, is limited to a one-time use on the site indicated on these plans.

(UNIT B1) GWB INTERIOR WALL  
 (UNIT B1) GWB INTERIOR FURRING WALL  
 (UNIT B1) GWB INTERIOR UNDERCOUNTER WALL

136.2 FT  
 3.1 FT  
 10.2 FT



**HUMPHREYS & PARTNERS ARCHITECTS / FLORIDA LLC**  
 541 EAST HICRATO AVE., STE 100, MAITLAND, FL 32751  
 (407) 339-3023 • (407) 339-6288 FAX  
 DALLAS, ORLANDO, MIAMI, SEASIDE, TAMPA, WASHINGTON  
 MIAMI, MIAMI, MIAMI, MIAMI, MIAMI, MIAMI, MIAMI  
 TORONTO - CHENNAI - DUBAI - HANOI - MONTREVIDEO  
 CERTIFICATE #AA 0000327

SHEET CONTENTS  
 UNIT B1 PLANS  
 & INTERIOR ELEVATION  
 SHEET NO.  
**A-3.21**

90% CD SET - 04/29/2022

**UNIT TYPE - B2**

TOTAL # OF UNITS ON SITE: 2  
 TOTAL NUMBER OF BEDROOMS: 2  
 TOTAL NUMBER OF BATH: 2  
 OCCUPANCY PER UNIT: 6  
 TRAVEL DISTANCE (IN UNIT) = 53'-9"

**SQUARE FOOTAGE DATA**

NET ACSF: 1171 SF

STORAGE: 11 SF  
 PATIO/BALCONY: 53 SF  
 TOTAL GSF: 1235 GSF

- GENERAL UNIT NOTES**
- PLEASE NOTE - MIRRORED VERSION OF UNIT LAYOUTS MAY BE USED IN BUILDING PLANS - REFER TO A-4.00 DRAWINGS
  - REFER TO MEP DWGS FOR LOCATION OF SMOKE, CO & FIRE DETECTORS
  - REFER ALSO TO SHEET A1.00 FOR ABBREVIATIONS AND GENERAL PROJECT NOTES
  - REFER ALSO TO SHEET A1.00 FOR TYPICAL WALL ASSEMBLIES
  - REFER ALSO TO THE A2.00 SERIES SHEET SHEETS FOR DOOR AND WINDOW SCHEDULE & DETAILS
  - ALL INTERIOR DOORS SHALL ALLOW A MINIMUM OF 7' AIRFLOW FOR RETURN AIR AT BOTTOM OF DOOR
  - EXTERIOR WINDOWS SHALL MEET ALL FEDERAL, STATE & LOCAL GLAZING STANDARDS. SLIDING GLASS DOORS SHALL NOT HAVE PIN LOCKS OR CHARLEY BARS
  - PER IBC-2018 TABLE 1002.2(1), ONLY STORES PERMITTED TO HAVE A SINGLE EXIT ARE ALSO REQUIRED TO HAVE EMERGENCY ESCAPE OPENINGS. WHEN REQUIRED, EMERGENCY ESCAPE OPENINGS TO BE PROVIDED IN BEDROOMS SHALL HAVE A MINIMUM OF ONE OPENING WITH 20" NET CLEAR WIDTH, 24" NET CLEAR HEIGHT, 5.7 SQFT. NET CLEAR OPENABLE AREA AND SHALL BE 44" MAXIMUM FROM FINISH FLOOR TO TOP OF SILL. ALL OTHER UNITS WITH AT LEAST TWO DISTINCT EXIT PATHS FROM THE UNIT ENTRY DOOR DO NOT REQUIRE EMERGENCY ESCAPE OPENINGS
  - WALL TYPES INSIDE UNIT PERIMETER ARE INDICATED ON THE A-3.00 UNIT PLANS. REFER TO A-4.00 BUILDING PLANS FOR PERIMETER WALL TYPES (UNIT TO UNIT, UNIT TO CORRIDOR, UNIT TO EXTERIOR)
  - ALL DIMENSIONS ARE TO FACE OF STUD OR CENTERLINE OF OPENING UNLESS INDICATED OTHERWISE. TYPICAL STUD WALLS ARE DIMENSIONED AS 5/8" THICK AND PLUMBING WALLS AS 5/8" THICK
  - ALL "NON DIMENSIONED" DOOR LOCATIONS SHALL BE LOCATED MIN 3" (DOUBLE STUD JAMB) FROM CORNER
  - REFER ALSO TO UNIT PLANS AND STRUCTURAL DRAWINGS FOR EXACT MOLDING LOCATIONS, SIZES AND FINISHES
  - PROVIDE MOISTURE RESISTANT GYPSUM DRYWALL AT ALL BATHROOM WALLS
  - IN LEED PROJECTS DRYWALL NEEDS TO BE NON PAPER BASED
  - PROVIDE SOUND BATTS IN ALL CORRIDOR, TENANT SEPARATION, LAUNDRY ROOM, PLUMBING, AND HVAC CLOSET WALLS
  - REFER TO STRUCTURAL DRAWINGS FOR SHEARWALL AND BEARING WALL LOCATIONS
  - VERTICAL MECHANICAL CHASES WITHIN UNITS ARE TO BE FIRE STOPPED PER LOCAL REQUIREMENTS
  - ALL ANGLES ARE 45° TO HORIZONTAL & VERTICAL DIRECTIONS, UNLESS NOTED OTHERWISE. TYPICAL AT ALL UNITS
  - ALL DIMENSIONS AND NOTES STATING "CLR" ARE FROM FACE OF FINISH TO FACE OF FINISH OR CABINET FIXTURE
  - REFER TO A1.00 AS A REFERENCE FOR UNIT FAIR HOUSING ACT GUIDELINES (FHAG) REQUIREMENTS AND OTHER ACCESSIBILITY REQUIREMENTS
  - TOWEL BARS ARE TO BE MOUNTED AT 40" AFF AS INDICATED ON PLANS. TOILET PAPER DISPENSERS AT 18" AFF UNLESS NOTED OTHERWISE (IN TYPE A UNITS, MOUNT 7-4" HORIZONTALLY BEYOND FRONT EDGE OF WC)
  - INTERIOR ELEVATIONS ARE FOR SCHEMATIC CABINET LAYOUT ONLY. CONTRACTOR TO VERIFY ALL DIMENSIONS. PROVIDE FILLERS AS REQUIRED. FILLERS SHALL BE A MAXIMUM OF 7"
  - VANITY MIRRORS TO BE 42" HIGH AND 2" LESS THAN THE VANITY WIDTH (TYP) AND TO BE MOUNTED WITH THE BOTTOM OF THE REFLECTING SURFACE NO MORE THAN 40" AFF IN ANSI TYPE A UNITS
  - VERIFY ALL FIXTURE DIMENSIONS WITH ACTUAL TUBSHOWER PROVIDED. GC TO COORDINATE FINAL FRAMING WITH TUBSHOWER MFR AND DETAILS. INSTALL CONTINUOUS BASE LAYER OF GYPBD AT ALL RATED WALLS BEFORE TUBSHOWER FIXTURE INSTALLATION ON RATED WALLS
  - PROVIDE SOLID BLOCKING IN ALL WALLS FOR FUTURE INSTALLATION OF GRAB BARS AS SHOWN ON A1.00, OR PROVIDE AN ALTERNATIVE MEANS OF REINFORCING THE CAVITY BETWEEN THE TUBSHOWER ENCLOSURES AND THE WALL
  - SEE ARCHITECTURAL ELEVATION, MEP AND STRUCTURAL DRAWINGS FOR EXTERIOR FEATURES THAT MAY REQUIRE BLOCKING OR OTHER CONSIDERATIONS SPECIFIC TO THE UNIT LOCATION IN THE BUILDING, SUCH AS BUT NOT LIMITED TO ATTACHED STORAGE, LIGHTING, AWNINGS, CANOPIES, TRELLISES, SHUTTERS, FIXTURES, BULDOUTS, CORNICES, RAILINGS, LANDSCAPE DRAWINGS AND ADJACENT ATTACHED STRUCTURES
  - PROVIDE A HIGH OUTLET AT 48" AFF FOR WALL MOUNT TV IN LIVING AND BEDROOMS. PROVIDE 2x10 BLOCKING FOR TV MOUNTING
  - ALL EXTERIOR SLABS TO SLOPE DOWN MIN 1/8" PER 1'-0" TO EXTERIOR EDGE OF SLAB. LIGHT BROOM FINISH AT SLOPED SURFACES. VERIFY WITH STRUCTURE
  - REFER TO INTERIOR DESIGNER ROOM FINISH SCHEDULE AND SCM FOR FINISHES. FOR ADDITIONAL ROOM FINISH NOTES
  - REFER TO INTERIOR DESIGNER DRAWINGS FOR EXACT MOLDING LOCATIONS, SIZES AND FINISHES
  - ALL GROUND FLOOR WINDOWS PACKED AND OPEN TO THE POOL COURTYARD MUST BE LIMITED TO 4" OPENING
  - ALL WINDOWS IN GROUP R1.2 AND R1.3 OCCUPANCIES LOCATED ABOVE THE FIRST FLOOR WITH SILLS BEL 30" AFF. MUST HAVE FALL PROTECTION IN ACCORDANCE WITH IBC SECTION 1015.8 (SLIGHTING OPENING TO 4" AND/OR CONTROL DEVICES PER ASTM F 2096)
  - ALL FIRST FLOOR PATIOS AND BALCONIES OPENING TO THE POOL DECK AREA SHALL HAVE 48" HIGH RAILINGS
  - ALTHOUGH SYMBOLS HAVE BEEN REMOVED FOR CLARITY, ALL FLOOR FINISHES SHALL EXTEND UNDER SHELVING, APPLIANCES, ALL RAISED COUNTERS, DESKS AND ANY CABINETS INDICATED WITH "REMOVABLE FINISH"
  - ACCESSIBLE DIMENSIONS LABELED "CLR" MIN "MAX" ARE FROM FINISHED FACE TO FINISHED FACE
  - THE 18 INCHES FROM THE CENTERLINE OF THE TOILET TO THE FINISHED WALL OR ADJACENT TUBSHOWER IS AN ABSOLUTE MEASUREMENT

**SYMBOL LEGEND - UNIT PLANS**

WINDOW TAG SYMBOL	DOOR TAG SYMBOL	DETAIL SECTION TAG	DETAIL REFERENCE TAG	INTERIOR ELEVATION SYMBOL	PARTITION WALL TAG REF A1.00	FLOORING TRANSITION TAG	AHU = AIR HANDLER UNIT	CO = CASED OPENING	CPT = CARPET	CSR = CURVED SHOWER ROD	CT = CERAMIC TILE	D = CLOTHES DRYER	DWR = DRAWER	DW = DISHWASHER	GYPBD = GYPSUM BOARD	KS = KNEE SPACE	LN = LINEN CABINET	MC = MEDICINE CABINET @ 48" AFF	P = PANTRY	RH = ROBE HOOK	SH = SHOWER HEAD	SR = SHOWER ROD	SRO = SHEETROCK OPENING	T = TEMPERED GLASS	TB = TOWEL BAR	TP = TOILET PAPER DISPENSER	TR = TOWEL RING	V = VINYL	VP = VINYL PLANK	W = WASHER	WD = WASHER / DRYER	WH = WATER HEATER	WS = WORKSPACE	# S = # OF SHELVES	1R1S = DENOTES 1 ROD 1 SHELF	2R2S = DENOTES 2 RODS 2 SHELVES
-------------------	-----------------	--------------------	----------------------	---------------------------	------------------------------	-------------------------	------------------------	--------------------	--------------	-------------------------	-------------------	-------------------	--------------	-----------------	----------------------	-----------------	--------------------	---------------------------------	------------	----------------	------------------	-----------------	-------------------------	--------------------	----------------	-----------------------------	-----------------	-----------	------------------	------------	---------------------	-------------------	----------------	--------------------	------------------------------	---------------------------------

Drawn By: HPA  
 Checked By: MK  
 Date Plotted: 29 April 2022  
 Issue Dates:

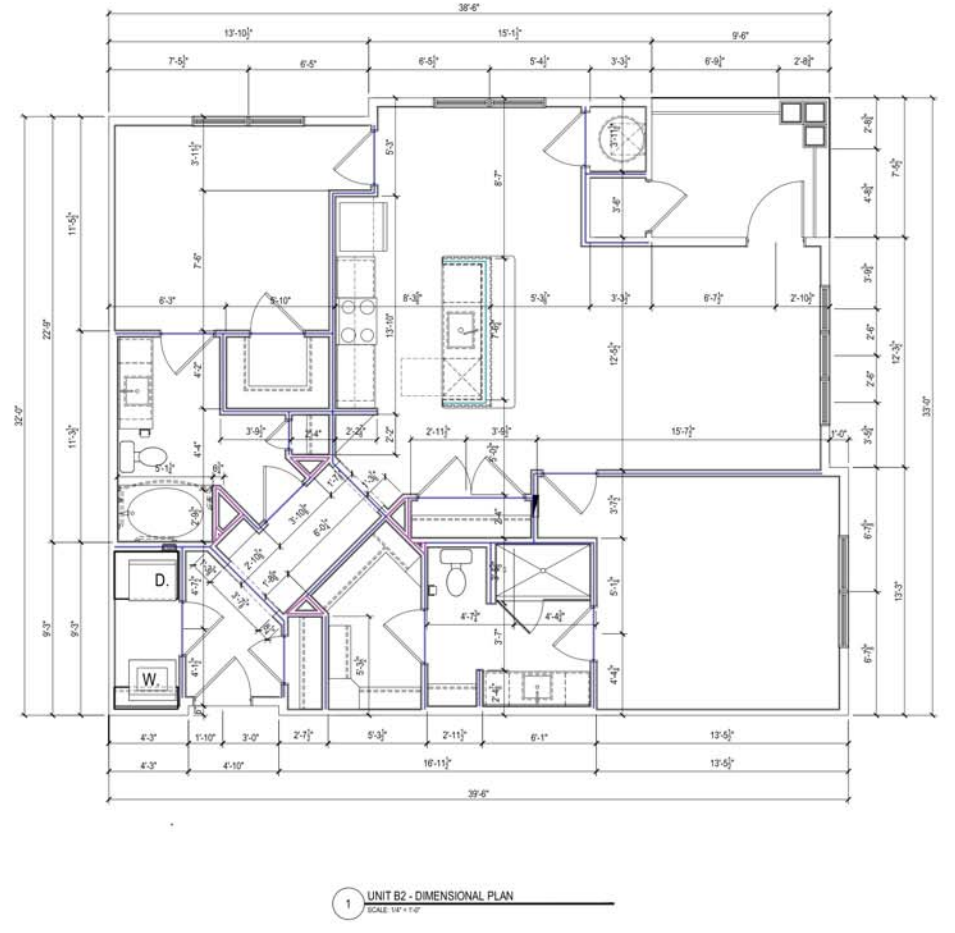
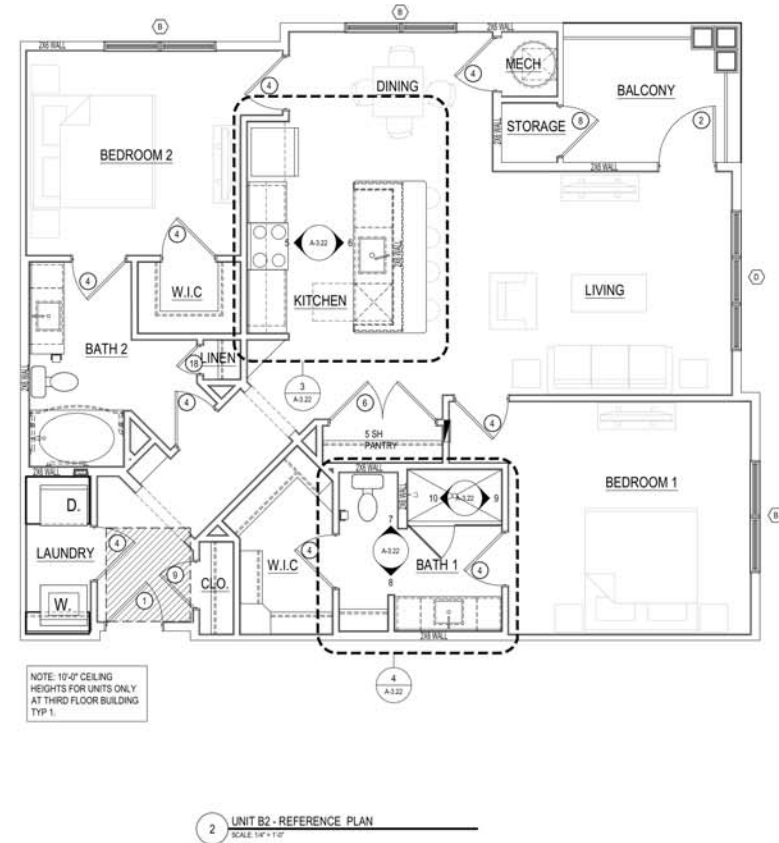
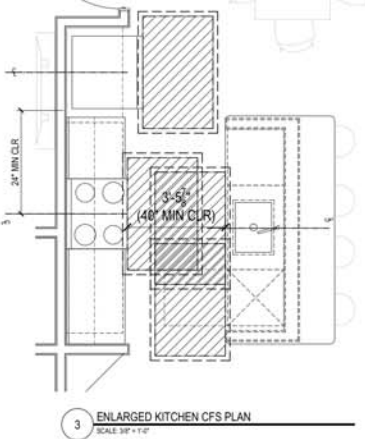
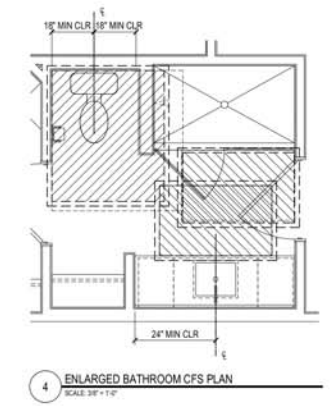
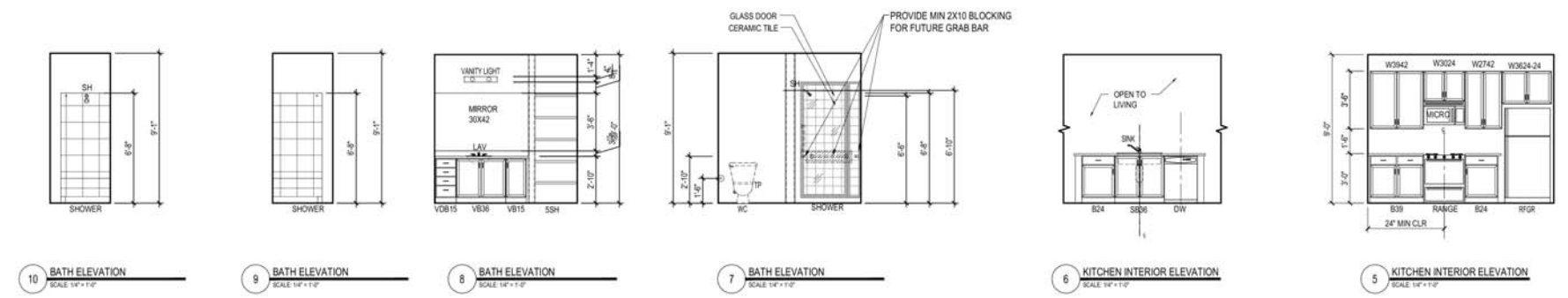
Issue No.	Date	Comments

Issue for Pricing / Bidding: \_\_\_\_\_  
 Issue for Permit Application: \_\_\_\_\_  
 Issue for Construction: \_\_\_\_\_

**(UNIT B2) GWB INTERIOR WALL** 160.9 FT

**(UNIT B2) GWB INTERIOR FURRING WALL** 25.8 FT

**(UNIT B2) GWB INTERIOR UNDERCOUNTER WALL** 12.2 FT



© 2016 by Humphreys & Partners Architects / Florida, L.L.C. All Rights Reserved.

The architectural works depicted herein are the sole property of Humphreys & Partners Architects, L.P. and may not be constructed or used without its express written permission. No permission to modify or reproduce any of the architectural works, including without limitation the construction of any building, is expressed or should be implied from delivery of preliminary drawings or unsealed construction drawings. Permission to construct the building depicted in sealed construction drawings is expressly conditioned on the full and timely payment of all fees otherwise due Humphreys & Partners Architects, L.P. and, in the absence of any written agreement to the contrary, is limited to a one-time use on the site indicated on these plans.

**HUMPHREYS & PARTNERS ARCHITECTS / FLORIDA LLC**  
 541 EAST HICRATO AVE., STE 100, MAITLAND, FL 32751  
 (407) 339-3023 • (407) 339-6208 FAX  
 DALLAS, ORLANDO, MIAMI, SCOTTSDALE, TAMPA, FLORIDA  
 DENVER, COVINGTON, SCOTTSDALE, DENVER, COLORADO  
 TORONTO, CHENNAI, DUBAI, HANOI, MONTREVIDEO  
 CERTIFICATE #AA 000327

SHEET CONTENTS  
 UNIT B2 PLANS & INTERIOR ELEVATION  
 SHEET NO.  
**A-3.22**

90% CD SET - 04/29/2022





- (1 HR) TYPE 1 & 2, GWB EXTERIOR WALL (9'1"H)
- (2 HR) TYPE 5, EXTERIOR GWB WALL (9'1"H)
- (2 HR) TYPE 6, INTERIOR GWB WALL (9'1"H)
- (1 HR) TYPE 20, INTERIOR GWB WALL (9'1"H)
- (1 HR) TYPE 24A, INTERIOR GWB WALL (9'1"H)
- (2 HR) TYPE 26, INTERIOR GWB WALL (9'1"H)
- (2 HR) TYPE 27, INTERIOR GWB WALL (9'1"H)
- (2 HR) TYPE 28, EXTERIOR GWB WALL (9'1"H)
- (2 HR) TYPE 29, EXTERIOR GWB WALL (9'1"H)
- (2 HR) TYPE 30, INTERIOR GWB WALL (9'1"H)
- (2 HR) TYPE 31, INTERIOR GWB WALL (9'1"H)
- (2 HR) TYPE 32, INTERIOR GWB WALL (9'1"H)
- (2 HR) TYPE 33, INTERIOR GWB WALL (9'1"H)
- (1 HR) TYPE 34, EXTERIOR GWB WALL (9'1"H)
- (1ST & 2ND) UNIT A1
- (1ST & 2ND) UNIT A2
- (1ST & 2ND) UNIT B1
- (1ST & 2ND) UNIT B2
- (1ST & 2ND) UNIT C1

GENERAL BUILDING NOTES

1. ALL WORK SHALL BE IN ACCORDANCE WITH THE LATEST EDITIONS OF THE FOLLOWING CODES AND STANDARDS UNLESS OTHERWISE SPECIFIED:  
 2. ALL WORK SHALL BE IN ACCORDANCE WITH THE LATEST EDITIONS OF THE FOLLOWING CODES AND STANDARDS UNLESS OTHERWISE SPECIFIED:  
 3. ALL WORK SHALL BE IN ACCORDANCE WITH THE LATEST EDITIONS OF THE FOLLOWING CODES AND STANDARDS UNLESS OTHERWISE SPECIFIED:  
 4. ALL WORK SHALL BE IN ACCORDANCE WITH THE LATEST EDITIONS OF THE FOLLOWING CODES AND STANDARDS UNLESS OTHERWISE SPECIFIED:  
 5. ALL WORK SHALL BE IN ACCORDANCE WITH THE LATEST EDITIONS OF THE FOLLOWING CODES AND STANDARDS UNLESS OTHERWISE SPECIFIED:  
 6. ALL WORK SHALL BE IN ACCORDANCE WITH THE LATEST EDITIONS OF THE FOLLOWING CODES AND STANDARDS UNLESS OTHERWISE SPECIFIED:  
 7. ALL WORK SHALL BE IN ACCORDANCE WITH THE LATEST EDITIONS OF THE FOLLOWING CODES AND STANDARDS UNLESS OTHERWISE SPECIFIED:  
 8. ALL WORK SHALL BE IN ACCORDANCE WITH THE LATEST EDITIONS OF THE FOLLOWING CODES AND STANDARDS UNLESS OTHERWISE SPECIFIED:  
 9. ALL WORK SHALL BE IN ACCORDANCE WITH THE LATEST EDITIONS OF THE FOLLOWING CODES AND STANDARDS UNLESS OTHERWISE SPECIFIED:  
 10. ALL WORK SHALL BE IN ACCORDANCE WITH THE LATEST EDITIONS OF THE FOLLOWING CODES AND STANDARDS UNLESS OTHERWISE SPECIFIED:  
 11. ALL WORK SHALL BE IN ACCORDANCE WITH THE LATEST EDITIONS OF THE FOLLOWING CODES AND STANDARDS UNLESS OTHERWISE SPECIFIED:  
 12. ALL WORK SHALL BE IN ACCORDANCE WITH THE LATEST EDITIONS OF THE FOLLOWING CODES AND STANDARDS UNLESS OTHERWISE SPECIFIED:  
 13. ALL WORK SHALL BE IN ACCORDANCE WITH THE LATEST EDITIONS OF THE FOLLOWING CODES AND STANDARDS UNLESS OTHERWISE SPECIFIED:  
 14. ALL WORK SHALL BE IN ACCORDANCE WITH THE LATEST EDITIONS OF THE FOLLOWING CODES AND STANDARDS UNLESS OTHERWISE SPECIFIED:  
 15. ALL WORK SHALL BE IN ACCORDANCE WITH THE LATEST EDITIONS OF THE FOLLOWING CODES AND STANDARDS UNLESS OTHERWISE SPECIFIED:  
 16. ALL WORK SHALL BE IN ACCORDANCE WITH THE LATEST EDITIONS OF THE FOLLOWING CODES AND STANDARDS UNLESS OTHERWISE SPECIFIED:  
 17. ALL WORK SHALL BE IN ACCORDANCE WITH THE LATEST EDITIONS OF THE FOLLOWING CODES AND STANDARDS UNLESS OTHERWISE SPECIFIED:  
 18. ALL WORK SHALL BE IN ACCORDANCE WITH THE LATEST EDITIONS OF THE FOLLOWING CODES AND STANDARDS UNLESS OTHERWISE SPECIFIED:  
 19. ALL WORK SHALL BE IN ACCORDANCE WITH THE LATEST EDITIONS OF THE FOLLOWING CODES AND STANDARDS UNLESS OTHERWISE SPECIFIED:  
 20. ALL WORK SHALL BE IN ACCORDANCE WITH THE LATEST EDITIONS OF THE FOLLOWING CODES AND STANDARDS UNLESS OTHERWISE SPECIFIED:

**SYMBOLS**

- 1,766.4 FT
- 28.4 FT
- 38.7 FT
- 822.6 FT
- 1,096.4 FT
- 58.1 FT
- 7.8 FT
- 5.9 FT
- 3.3 FT
- 97.5 FT
- 18.3 FT
- 9.9 FT
- 9.3 FT
- 60.0 FT
- 10.0
- 4.0
- 14.0
- 4.0
- 2.0

**- BUILDING PLANS**

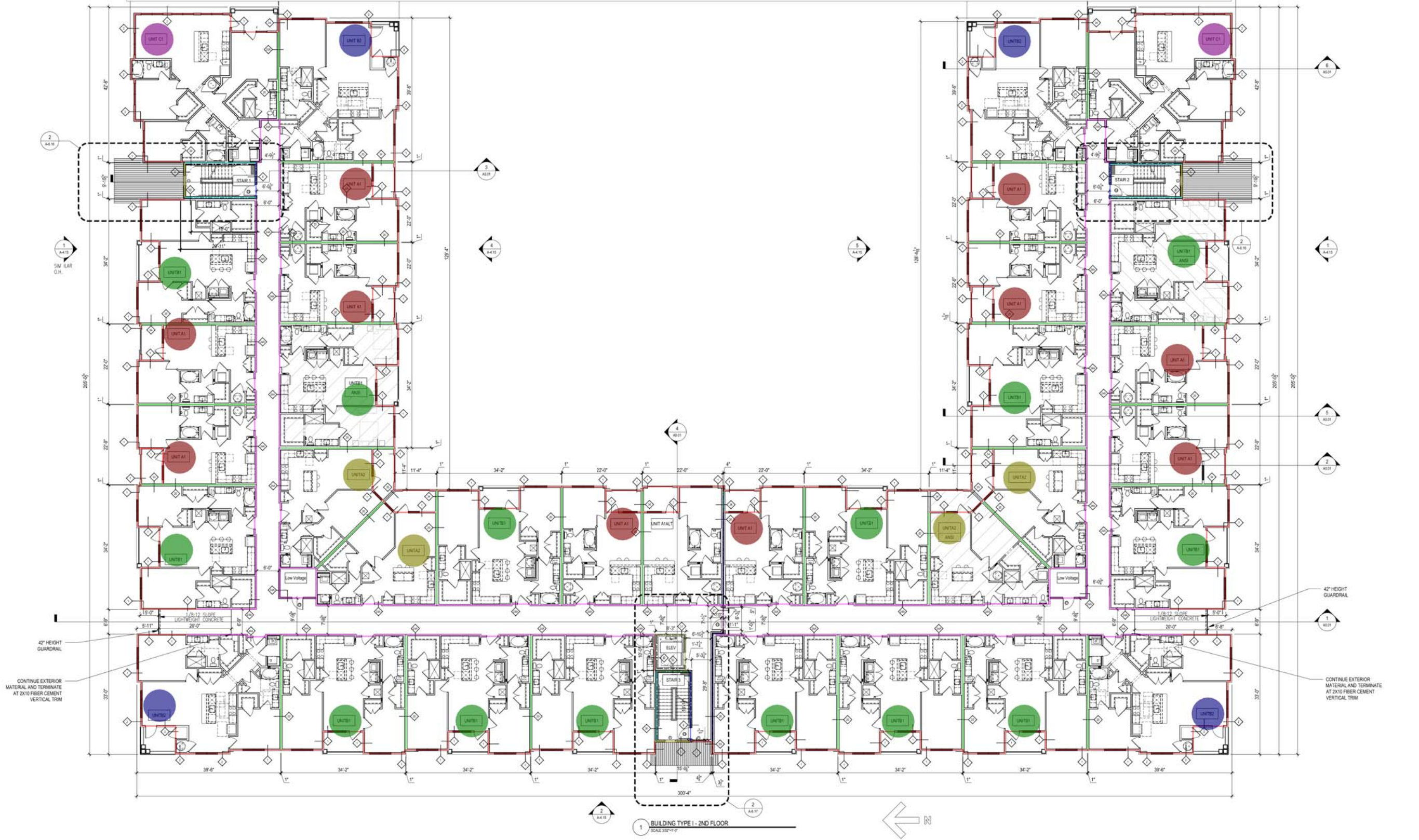
- CMU WALL
- 1HR FIRE BARRIER
- 1HR FIRE PARTITION
- 1HR FIRE PARTITION AT CORRIDORS
- ASSUMED PROPERTY LINE
- 5 1/2" BRICK / STONE LEDGE
- UNIT TYPE
- SHEET NUMBER
- UNIT NUMBER
- ROOM NAME
- ROOM NUMBER
- FLOOR DROP
- FINISHED FLOOR ELEVATION REFER TO CIVIL
- ENTRANCE DOOR MANEUVERING CLEARANCE
- FLOOR DRAIN LOCATIONS, REF. STRUCT & MEP

Drawn By: HPA  
 Checked By: MK  
 Date Plotted: 29 April 2022  
 Issue Date:

Issue for Pricing / Bidding	Issue for Permit Application	Issue for Construction

Revisions	#	DATE	COMMENTS

© 2016 by Humpreys & Partners Architects / Florida L.L.C. All Rights Reserved.  
 The architectural works depicted herein are the sole property of Humpreys & Partners Architects, L.P. and may not be constructed or used without its express written permission. No permission to modify or reproduce any of the architectural works, including without limitation the construction of any building, is expressed or should be implied from delivery of preliminary drawings or unsealed construction drawings. Permission to construct the building depicted in sealed construction drawings is expressly conditioned on the full and timely payment of all fees otherwise due Humpreys & Partners Architects, L.P. and, in the absence of any written agreement to the contrary, is limited to a one-time use on the site indicated on these plans.



**HUMPREYS & PARTNERS ARCHITECTS / FLORIDA LLC**  
 541 EAST HORATIO AVE. - STE 100    MAITLAND, FL 32751  
 (407) 339-3023    (407) 339-6208 FAX  
 DALLAS    ORLANDO    MIAMI    SELESTER    TAMPA    WASHINGTON  
 NEW YORK    SCOTTSDALE    DENVER    CHICAGO    HOUSTON  
 TORONTO    CHENNAI    DUBAI    HANGKONG    MONTREVIDEO  
 CERTIFICATE #AA 000327

- (1 HR) TYPE 1 & 2, GWB EXTERIOR WALL (10'1"H)
- (2 HR) TYPE 5, EXTERIOR GWB WALL (10'1"H)
- (2 HR) TYPE 6, INTERIOR GWB WALL (10'1"H)
- (1 HR) TYPE 20, INTERIOR GWB WALL (10'1"H)
- TYPE 23, INTERIOR GWB WALL (10'1"H)
- (1 HR) TYPE 24A, INTERIOR GWB WALL (10'1"H)
- (2 HR) TYPE 26, INTERIOR GWB WALL (10'1"H)
- (2 HR) TYPE 27, INTERIOR GWB WALL (10'1"H)
- (2 HR) TYPE 28, EXTERIOR GWB WALL (10'1"H)
- (2 HR) TYPE 29, EXTERIOR GWB WALL (10'1"H)
- (2 HR) TYPE 30, INTERIOR GWB WALL (10'1"H)
- (2 HR) TYPE 31, INTERIOR GWB WALL (10'1"H)
- (2 HR) TYPE 32, INTERIOR GWB WALL (10'1"H)
- (2 HR) TYPE 33, INTERIOR GWB WALL (10'1"H)
- (1 HR) TYPE 34, EXTERIOR GWB WALL (10'1"H)
- (3RD) UNIT A1
- (3RD) UNIT B2
- (3RD) UNIT B1
- (3RD) UNIT A2
- (3RD) UNIT C1

GENERAL BUILDING NOTES

1. ALL WORK SHALL BE IN ACCORDANCE WITH THE LATEST EDITIONS OF THE INTERNATIONAL BUILDING CODE (IBC) AND THE FLORIDA BUILDING CODE (FBC) UNLESS OTHERWISE SPECIFIED.

2. THE ARCHITECT'S INTENT SHALL BE TO PROVIDE A BUILDING THAT IS SAFE, DURABLE, AND OF HIGH QUALITY.

3. ALL MATERIALS AND METHODS OF CONSTRUCTION SHALL BE APPROVED BY THE ARCHITECT PRIOR TO CONSTRUCTION.

4. THE CONTRACTOR SHALL BE RESPONSIBLE FOR OBTAINING ALL NECESSARY PERMITS AND APPROVALS FROM THE LOCAL AUTHORITIES.

5. THE CONTRACTOR SHALL MAINTAIN ACCESS TO ALL ADJACENT PROPERTIES AT ALL TIMES.

6. ALL WORK SHALL BE COMPLETED WITHIN THE SPECIFIED TIME FRAME.

7. THE CONTRACTOR SHALL BE RESPONSIBLE FOR PROTECTING ALL EXISTING UTILITIES AND STRUCTURES.

8. ALL WORK SHALL BE DONE IN ACCORDANCE WITH THE LATEST EDITIONS OF THE IBC AND FBC.

9. THE CONTRACTOR SHALL BE RESPONSIBLE FOR OBTAINING ALL NECESSARY PERMITS AND APPROVALS FROM THE LOCAL AUTHORITIES.

10. THE CONTRACTOR SHALL MAINTAIN ACCESS TO ALL ADJACENT PROPERTIES AT ALL TIMES.

11. ALL WORK SHALL BE COMPLETED WITHIN THE SPECIFIED TIME FRAME.

12. THE CONTRACTOR SHALL BE RESPONSIBLE FOR PROTECTING ALL EXISTING UTILITIES AND STRUCTURES.

13. ALL WORK SHALL BE DONE IN ACCORDANCE WITH THE LATEST EDITIONS OF THE IBC AND FBC.

14. THE CONTRACTOR SHALL BE RESPONSIBLE FOR OBTAINING ALL NECESSARY PERMITS AND APPROVALS FROM THE LOCAL AUTHORITIES.

15. THE CONTRACTOR SHALL MAINTAIN ACCESS TO ALL ADJACENT PROPERTIES AT ALL TIMES.

16. ALL WORK SHALL BE COMPLETED WITHIN THE SPECIFIED TIME FRAME.

17. THE CONTRACTOR SHALL BE RESPONSIBLE FOR PROTECTING ALL EXISTING UTILITIES AND STRUCTURES.

18. ALL WORK SHALL BE DONE IN ACCORDANCE WITH THE LATEST EDITIONS OF THE IBC AND FBC.

19. THE CONTRACTOR SHALL BE RESPONSIBLE FOR OBTAINING ALL NECESSARY PERMITS AND APPROVALS FROM THE LOCAL AUTHORITIES.

20. THE CONTRACTOR SHALL MAINTAIN ACCESS TO ALL ADJACENT PROPERTIES AT ALL TIMES.

**1,739.9 FT**

**28.4 FT**

**38.7 FT**

**797.1 FT**

**18.2 FT**

**1,109.7 FT**

**58.0 FT**

**7.8 FT**

**5.9 FT**

**3.3 FT**

**97.5 FT**

**18.3 FT**

**9.9 FT**

**9.3 FT**

**54.1 FT**

**10.0**

**4.0**

**14.0**

**4.0**

**2.0**

**SYMBOLS**

**- BUILDING PLANS**

CMU WALL

1HR FIRE BARRIER

14HR FIRE PARTITION

AT UNIT SEPARATION

14HR FIRE PARTITION

AT CORRIDORS

ASSUMED PROPERTY LINE

5 1/2" BRICK / STONE LEDGE

UNIT TYPE

UNIT NUMBER

ROOM NAME

ROOM NUMBER

FLOOR DROP

FINISHED FLOOR

ELEVATION REFER TO CIVIL

ENTRANCE DOOR

MANEUVERING CLEARANCE

FLOOR DRAIN LOCATIONS,

REF. STRUCT & MEP

CEASED CABINET

MAX 9'-0" AFF TO TOP

TRAVEL DISTANCE

BE BELOW 2"

Drawn By: HPA

Checked By: MK

Date Plotted: 29 April 2022

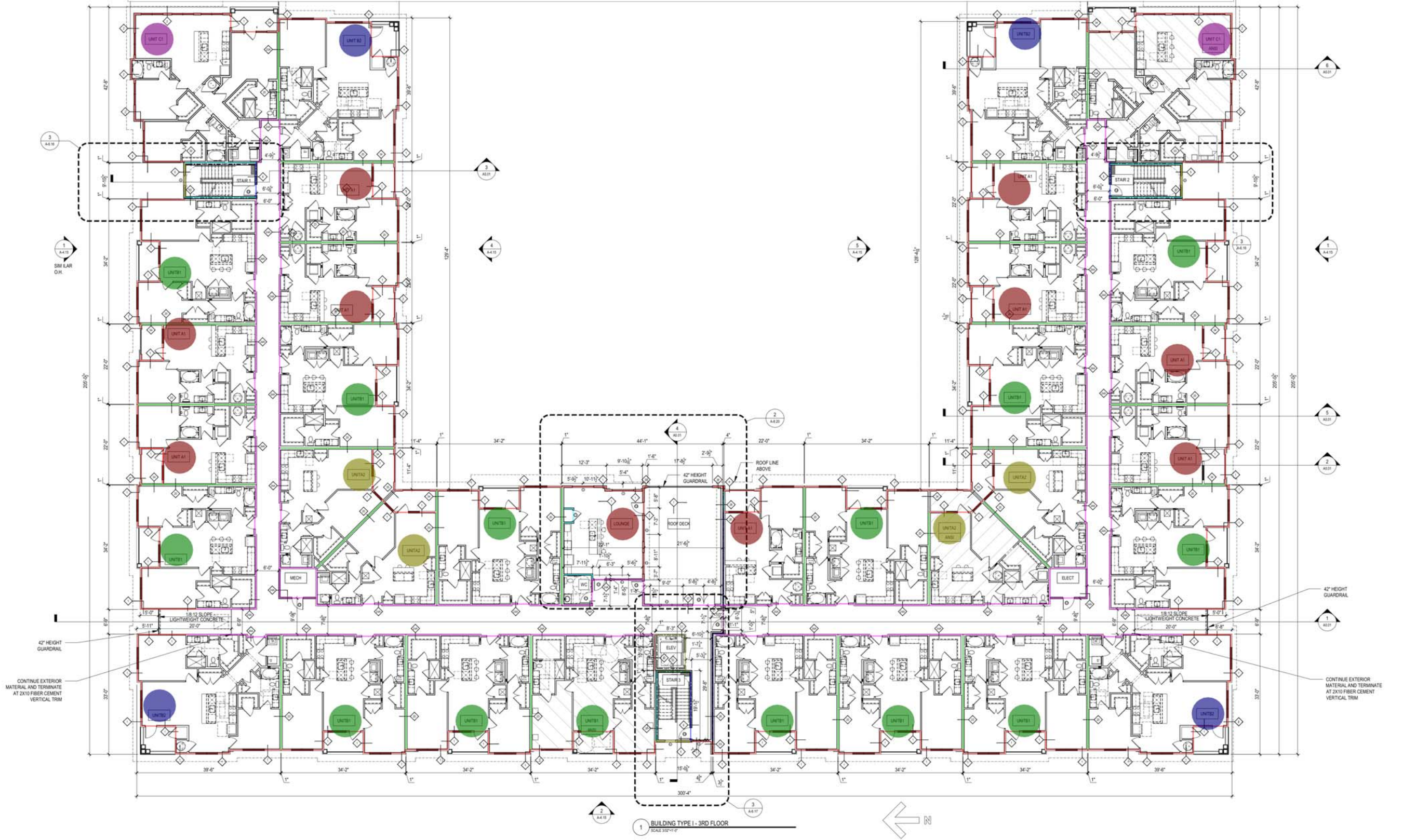
Issue Date:

Issue for Pricing / Bidding	Issue for Permit Application	Issue for Construction

Revisions	#	DATE	COMMENTS

© 2016 by Humphreys & Partners Architects / Florida L.L.C. All Rights Reserved.

The architectural works depicted herein are the sole property of Humphreys & Partners Architects, L.P. and may not be constructed or used without its express written permission. No permission to modify or reproduce any of the architectural works, including without limitation the construction of any building, is expressed or should be implied from delivery of preliminary drawings or unsealed construction drawings. Permission to construct the building depicted in sealed construction drawings is expressly conditioned on the full and timely payment of all fees otherwise due Humphreys & Partners Architects, L.P. and, in the absence of any written agreement to the contrary, is limited to a one-time use on the site indicated on these plans.



**HUMPHREYS & PARTNERS**  
**ARCHITECTS / FLORIDA LLC**  
 541 EAST HICRATO AVE., STE 100    MIAMI, FL 33156  
 (407) 339-3023    (407) 339-6208 FAX  
 DALLAS    ORLANDO    MIAMI    SEASIDE    TAMPA  
 NEW YORK    CHICAGO    SCOTTSDALE    WASHINGTON  
 TORONTO    CHENNAI    DUBAI    HANOI    MONTREVIDE  
 CERTIFICATE #AA 000327



SHEET CONTENTS

BLDG TYPE 1 -

3RD FLOOR PLAN

SHEET NO.

**A-4.13**

2021316

90% CD SET - 04/29/2022

### CLUBHOUSE NOTES

NOTE:

- REF. TO MEP DWGS FOR LOCATION OF SMOKE & FIRE DETECTORS.
- REF. SHEET A1.02 FOR ACCESSIBILITY COMPLIANCE NOTES.
- REF. SHEET A1.03 FOR TYPICAL INTERIOR ELEVATION PROFILES & NOTES.
- REF. SHEET A1.04 FOR ABBREVIATIONS AND GENERAL PROJECT NOTES.
- REF. TO SHEET A1.05 FOR TYPICAL WALL ASSEMBLIES.
- REF. SHEET A1.06 FOR DOOR SCHEDULE & DETAILS.
- REF. SHEET A1.07 FOR WINDOW SCHEDULE & DETAILS.
- ALL DIMENSIONS ARE TO FACE OF STUD OR CENTER LINE OF OPENING.
- ALL DOORS ARE # FROM ADJACENT WALL UNLESS NOTED.
- ACCESSIBLE DIMENSIONS LABELED "CLEAR", "MIN.", "MAX." ARE FINISHED FACE TO FINISHED FACE.
- ALL ANGLES ARE 45 DEG. TO HORIZONTAL & VERTICAL DIRECTIONS, UNLESS OTHERWISE NOTED.
- SOUND INSULATE WALLS AROUND ALL HVAC CLOSETS AND OTHER WALLS AS INDICATED ON PLANS.
- ALL INTERIOR DOORS SHALL ALLOW 30" AIRFLOW FOR RETURN AIR AT BOTTOM OF DOOR.
- FOR DIMENSIONING PURPOSES, TYPICAL STUD WALLS ARE DIMENSIONED AS 3 1/2", 5 1/2" or 7 1/2" THICK. REFER TO STRUCTURAL DRAWINGS FOR ANY SPECIAL STUD THICKNESSES.
- PAINT UNDERSIDE OF ALL EXPOSED SHELVING.
- ALL EXTERIOR WINDOWS SHALL MEET ALL FEDERAL, STATE AND ANY LOCAL GLAZING STANDARDS.
- INTERIOR ELEVATIONS ARE FOR SCHEMATIC CABINET LAYOUT ONLY. CONTRACTOR TO VERIFY ALL DIMENSIONS. PROVIDE FILLERS AS REQUIRED. REFER TO CABINET SHOP DRAWINGS.
- A SIGN STATING THE MAXIMUM OCCUPANCY LOAD OF ALL ROOMS WITH AN ASSEMBLY OCCUPANCY MUST BE POSTED IN A CONSPICUOUS LOCATION IN THE RESPECTIVE ROOM.
- REFERENCE MEP FOR LOCATIONS OF ELECTRONIC ACCESS LOCATIONS. DOORS AND FRAMES TO BE PRE-WIRED FOR CARD ACCESS.
- PROVIDE 36" ACCESSIBLE ROUTE TO EACH PIECE OF EQUIPMENT INSTALLED IN FITNESS ROOM.
- CONTRACTOR TO VERIFY THE QUANTITY AND LOCATION OF FIRE EXTINGUISHER CABINETS WITH THE FIRE DEPARTMENT PRIOR TO INSTALLATION.
- ALL EXTERIOR SLABS TO SLOPE 1/4" FT TO EDGE OF SLAB. LIGHT BROOM FINISH AT SLOPED SURFACES.
- ALL ACCESSIBLE ENTRANCES SHALL HAVE NO MORE THAN A 2% SLOPE FOR A DISTANCE OF 60" PERPENDICULAR TO THE DOOR.
- ALL EXTERIOR COMMON USE DOOR THRESHOLDS TO BE ACCESSIBLE. REF. A3.01 AND 108.01a FOR TYPICAL DOOR THRESHOLD FOR COMMON AREAS.
- CONTROL JOINTS SHOULD BE SPACED IN GYPSUM WALL BOARD TO LIMIT EXPANSION TO 30" MAXIMUM. CONTROL JOINTS ARE RECOMMENDED AT DOOR JAMBS, EXTENDING FROM DOOR HEAD TO CEILING. CEILING GYPSUM BOARD CONTROL JOINTS SHOULD LIMIT THE CEILING AREA TO 2,500 SF MAX. AND 50' IN EITHER DIRECTION. CONTROL JOINTS SHOULD BE INSTALLED WHERE THERE IS A CHANGE IN DIRECTION IN CEILING FRAMING, FURRING OR SPACE CONTROL JOINTS AT THE CEILING AND WALL PER THE MANUFACTURER'S RECOMMENDED INSTALLATION GUIDELINES. CEILING AND WALL CONTROL JOINTS ARE TO ALIGN AT ALL INTERSECTIONS WHERE APPLICABLE TO FORM A CONTINUOUS CONTROL JOINT. ENSURE THAT CONTROL JOINTS ARE LOCATED AT STRUCTURAL CONSTRUCTION JOINTS AND AT THE TOP AND BOTTOM OF ALL INTERIOR RAMPS.
- REF. TO INTERIOR DESIGNER FINISH SCHEDULE FOR FINISHES.
- REF. TO INTERIOR DESIGNER DRAWINGS FOR EXACT MOLDING LOCATIONS, SIZES AND FINISHES.
- REFER TO ID FOR FLOOR FINISHES. TOILET AND BATHING ROOM FLOORS SHALL HAVE A SMOOTH, HARD, NON-ABSORBENT SURFACE THAT EXTENDS UPWARD ONTO THE WALLS 8" MIN.
- REFER TO ID DRAWINGS FOR INTERIOR WALL FINISHES. WALLS WITHIN 2' OF URINALS AND WATER CLOSETS SHALL HAVE A SMOOTH, HARD, NON-ABSORBENT SURFACE, TO A HEIGHT OF 4' MIN. AFF. AND EXCEPT FOR STRUCTURAL ELEMENTS, THE MATERIALS USED IN SUCH WALLS SHALL BE OF A TYPE THAT IS NOT ADVERSELY AFFECTED BY MOISTURE. ACCESSORIES SUCH AS GRAB BARS, TOWEL BARS, PAPER DISPENSERS AND SOAP DISHES, PROVIDED ON OR WITHIN WALLS, SHALL BE INSTALLED AND SEALED TO PROTECT STRUCTURAL ELEMENTS FROM MOISTURE.

### SYMBOL LEGEND - FLOOR PLANS

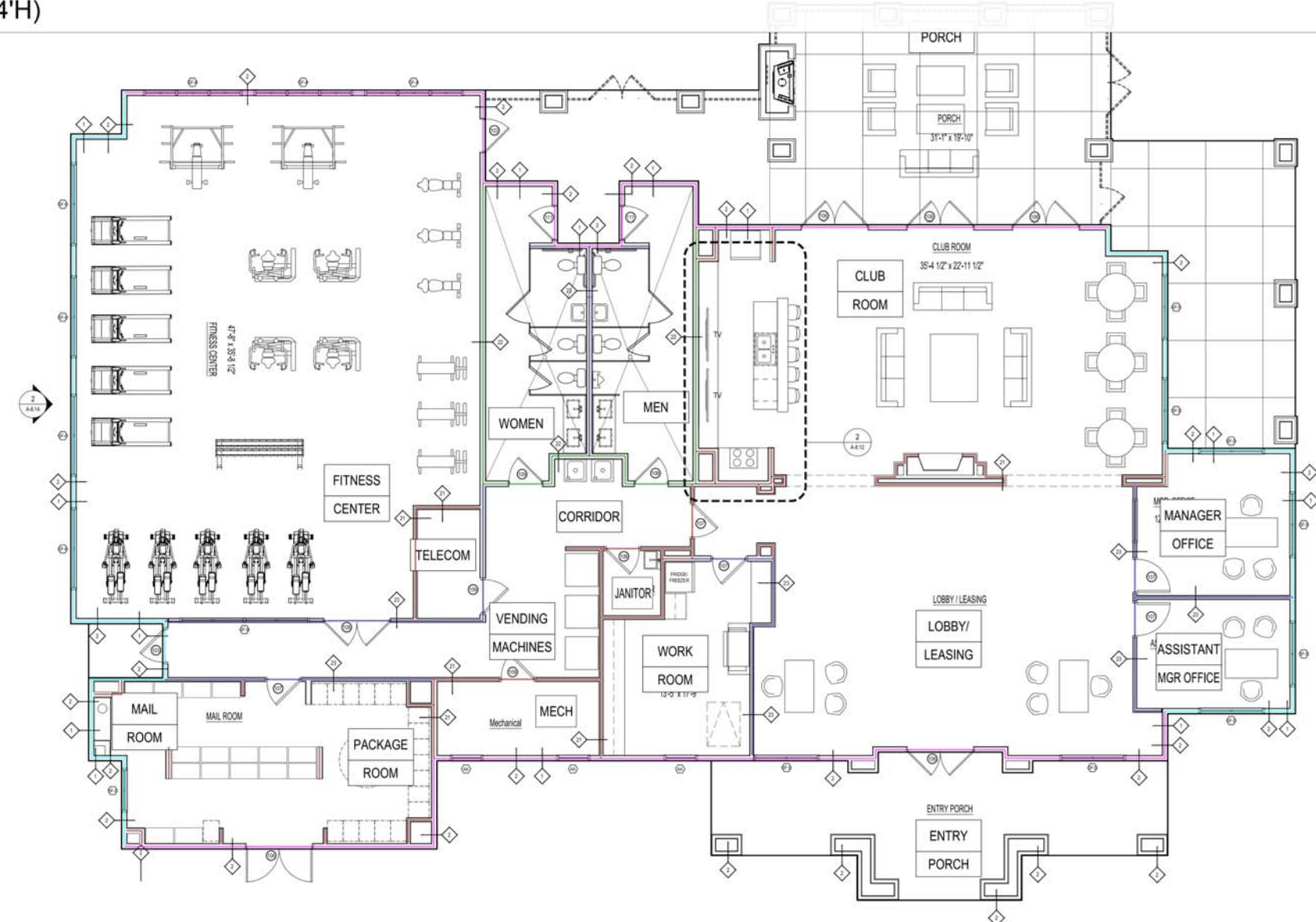
	EXTERIOR ELEVATION TAG		DOOR TAG SYMBOL
	WALL SECTION TAG		WINDOW TAG SYMBOL
	DETAIL SECTION TAG		CMU WALL
	PARTITION WALL TAG		3HR FIRE WALL
	FURROWDOWN		2HR FIRE WALL
	BUILDING UNDER SEPARATE PERMIT		1HR FIRE WALL
	METER		1HR FIRE PARTITION AT UNIT SEPARATION
	FLOOR DRAIN LOCATIONS, REF. STRUCT & MEP		1HR FIRE PARTITION AT CORRIDORS
	SEM-RECESSED FIRE EXTINGUISHER (WOOD FRAME WALLS), CABINETS MAX. 5'0" A.F.F. TO TOP OF CABINET, MAX. 75' FT TRAVEL DISTANCE-LEADING EDGE MUST BE BELOW 27"		ASSUMED PROPERTY LINE
	FEC		5 1/2" BRICK / STONE LEDGE
	TEMPERED GLASS PER IBC 2406		BUILDING NUMBER
	CLEAR FLOOR SPACE		FINISHED FLOOR ELEVATION REFER TO CIVIL
			INTERIOR ELEVATION SYMBOL

Drawn By: HPA  
 Checked By: MK  
 Date Plotted: 29 April 2022  
 Issue Dates:

Issue No.	Date	Comments

© 2016 by Humphreys & Partners Architects / Florida L.L.C. All Rights Reserved.  
 The architectural works depicted herein are the sole property of Humphreys & Partners Architects, L.P. and may not be constructed or used without its express written permission. No permission to modify or reproduce any of the architectural works, including without limitation the construction of any building, is expressed or should be implied from delivery of preliminary drawings or unsealed construction drawings. Permission to construct the building depicted in sealed construction drawings is expressly conditioned on the full and timely payment of all fees otherwise due Humphreys & Partners Architects, L.P. and, in the absence of any written agreement to the contrary, is limited to a one-time use on the site indicated on these plans.

- |  |   |  |          |
|--|---|--|----------|
|  | (1 HR) TYPE 1 & 2, GWB EXTERIOR WALL (12'H) |  | 222.0 FT |
|  | (1 HR) TYPE 1 & 2, GWB EXTERIOR WALL (14'H) |  | 164.1 FT |
|  | (1 HR) TYPE 21, INTERIOR GWB WALL (14'H)    |  | 185.1 FT |
|  | TYPE 22, INTERIOR GWB WALL (14'H)           |  | 75.2 FT  |
|  | TYPE 23, INTERIOR GWB WALL (14'H)           |  | 154.7 FT |



1 CLUBHOUSE - REFERENCE PLAN  
 SCALE 1/8"=1'-0"

90 % CD SET - 04/29/2022

**HUMPHREYS & PARTNERS**  
 ARCHITECTS / FLORIDA LLC  
 541 EAST HICRATO AVE., STE 100    MAITLAND, FL 32751  
 (407) 338-9323    (407) 338-8288 FAX  
 DALLAS    ORLANDO    MIAMI    SELEWEE    TAMPA    WASHINGTON  
 NEW YORK    SCOTTSDALE    DENVER    CHICAGO  
 TORONTO    CHENNAI    DUBAI    HANOI    MONTREVIDEO  
 CERTIFICATE #AA 000327



SHEET CONTENTS  
 CLUBHOUSE  
 REFERENCE PLAN  
 SHEET NO.  
**A-8.10**

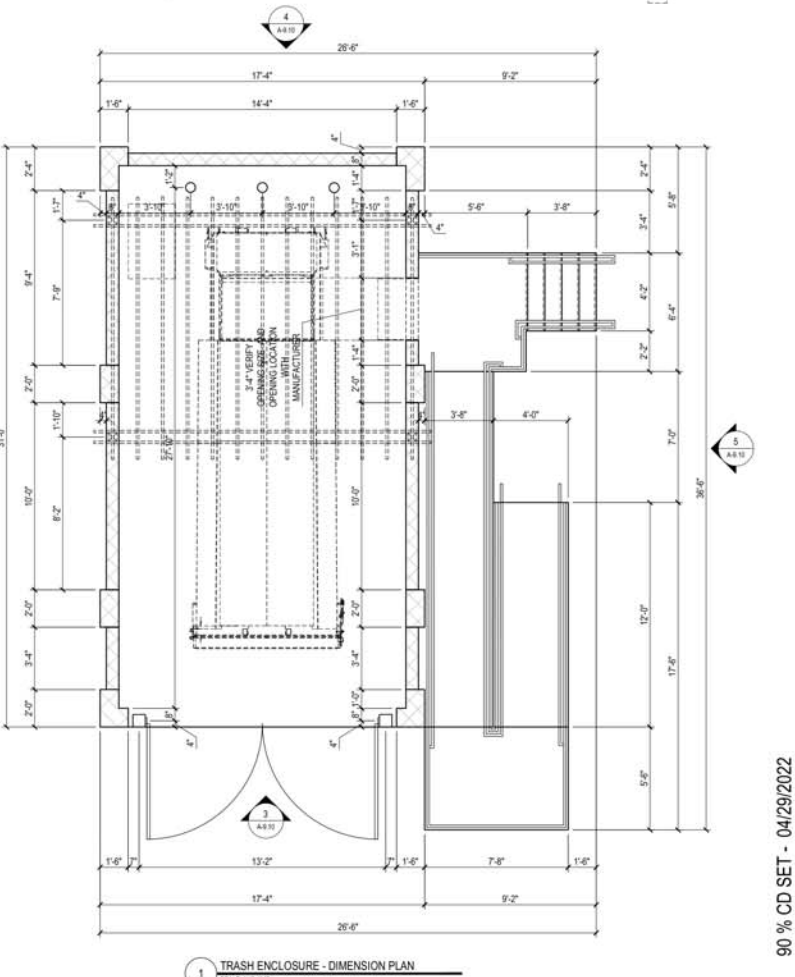
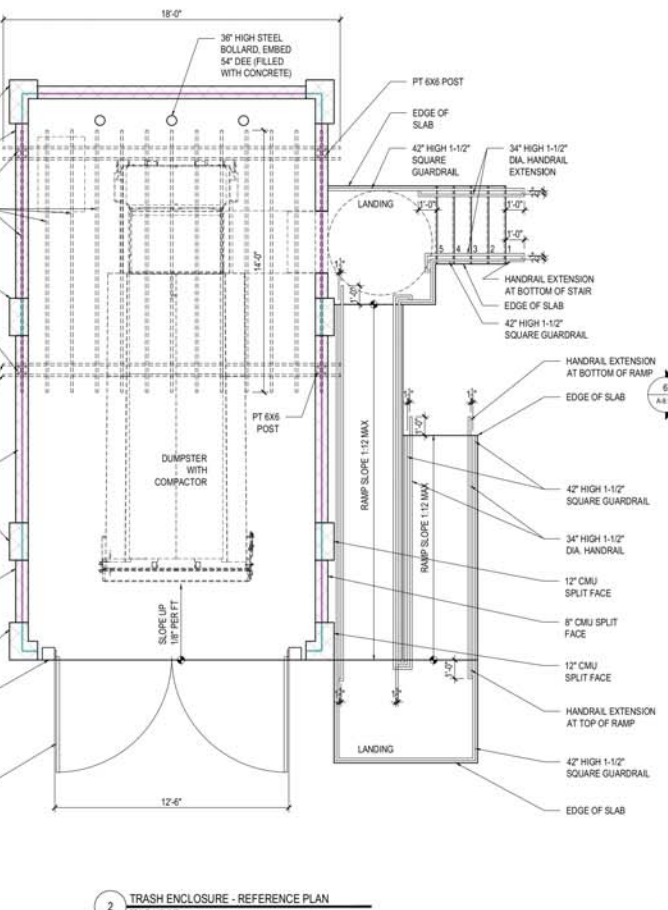
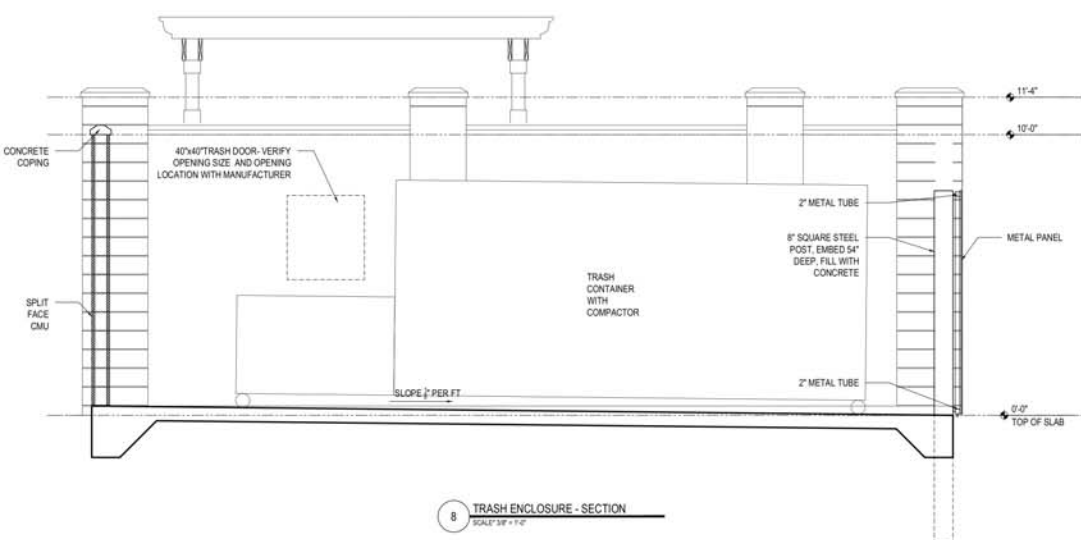
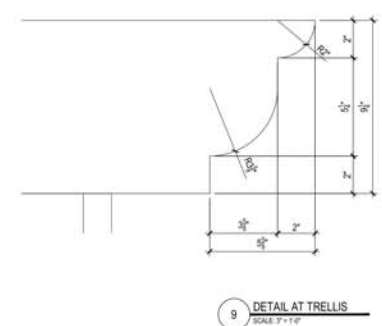
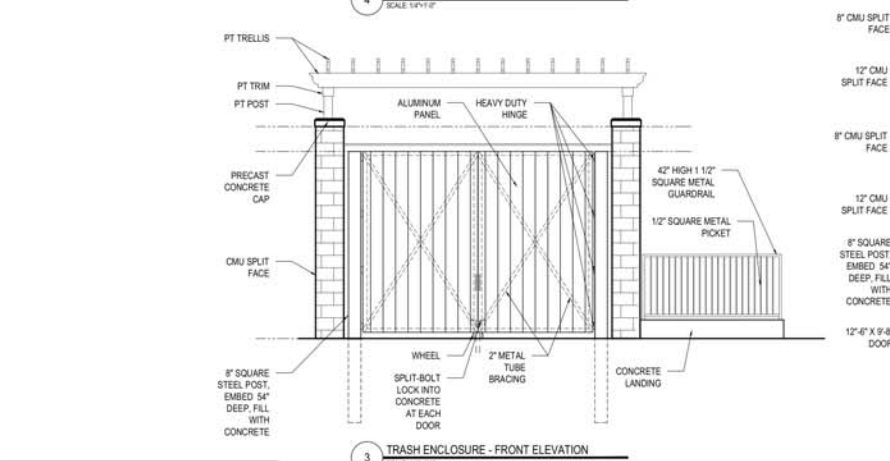
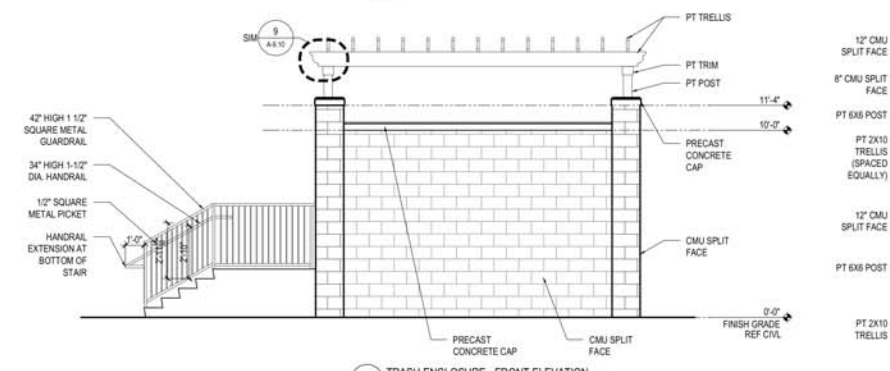
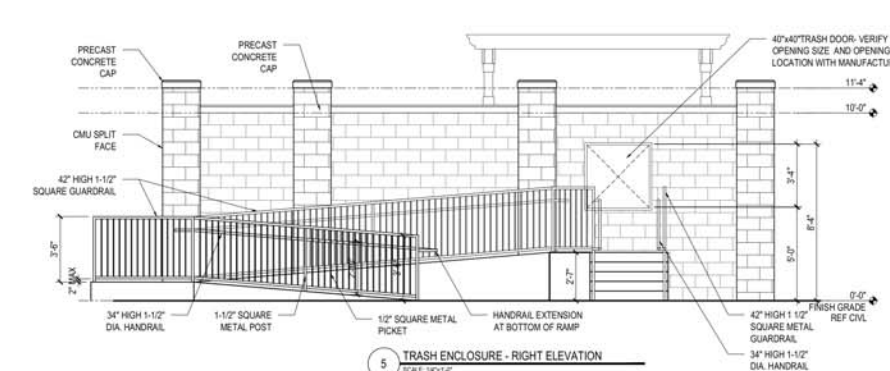
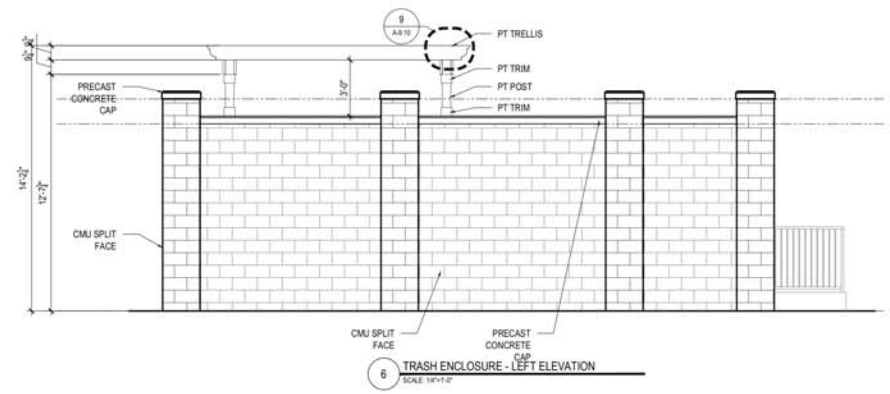
2021316

 (8" THK) SPLIT FACE CMU WALL (10'H)  
 (12" THK) SPLIT FACE CMU WALL (11'4"H)

59.7 FT  
 17.6 FT

Drawn By:	HPA	
Checked By:	SK	
Date Plotted:	29 April 2022	
Issue Date:		
Issue for Pricing / Bidding:		
Issue for Permit Application:		
Issue for Construction:		
Revisions:		
#	DATE	COMMENTS

© 2016 by Humpreys & Partners Architects / Florida L.L.C. All Rights Reserved.  
 The architectural works depicted herein are the sole property of Humpreys & Partners Architects, L.P. and may not be constructed or used without its express written permission. No permission to modify or reproduce any of the architectural works, including without limitation the construction of any building, is expressed or should be implied from delivery of preliminary drawings or unsealed construction drawings. Permission to construct the building depicted in sealed construction drawings is expressly conditioned on the full and timely payment of all fees otherwise due Humpreys & Partners Architects, L.P. and, in the absence of any written agreement to the contrary, is limited to a one-time use on the site indicated on these plans.



**HUMPREYS & PARTNERS ARCHITECTS / FLORIDA LLC**  
 541 EAST HORATIO AVE. - STE 100    MAITLAND, FL 32751  
 (407) 339 3023    (407) 339 6208 FAX  
 DALLAS    ORLANDO    MIAMI    TAMPA    SEASIDE BEACH    BOCA RATON  
 MIAMI BEACH    MIAMI    MIAMI GARDENS    SCOTTSDALE    BOCA RATON  
 TORONTO    CHENNAI    DUBAI    HANOI    MONTVIDEO  
 CERTIFICATE #AA 000327



SHEET CONTENTS  
 TRASH ENCLOSURE  
 PLAN AND ELEVATIONS  
 SHEET NO.  
**A-9.10**

2021316

90 % CD SET - 04/29/2022

SCALE: 1/4"=1'-0" UNLESS OTHERWISE NOTED







	(BLDG 1) - FIBER CEMENT LAP SIDING (8'11"H)	862.5 FT
	(BLDG 1) - FIBER CEMENT LAP SIDING (1'8"H)	322.3 FT
	(BLDG 1) - (3'X6') Window deduct	10.0
	(BLDG 1) - (4'X6') Window deduct	10.0
	(BLDG 1) - (5'X6') Window deduct	14.0
	(BLDG 1) - (3'X8'H) Door Deduct	34.0
	(BLDG 1) - (2'8"x8'H) Door Deduct	4.0
	(BLDG 1) - (4"H) Trim	12.3 FT
	(BLDG 1) - GWB CEILING	6,966.0 SQ FT
	(BLDG 1) - (6'10"x8'H) DOOR	2.0
	(BLDG 1) - DOOR 104	6.0
	(BLDG 1) - DOOR 101	2.0
	(BLDG 1) - DOOR 105	1.0
	(BLDG 1) - DOOR 102	1.0
	GWB TYPE "C"	2,008.2 SQ FT

- ### GENERAL BUILDING NOTES
- PLEASE NOTE - BUILDING PLANS MAY DEPICT MIRRORRED VERSION OF UNIT LAYOUTS DEPICTED IN A-2.0 DRAWINGS.
  - PROVIDE A BROOM FINISH AT ALL EXTERIOR SLOPED CONCRETE SURFACES.
  - BREEZEWAY CONCRETE SURFACES TO RECEIVE A LIGHT BROOM GRADED FINISH. SLOPE AS INDICATED ON DWG. CONDITIONED CONDOOR SURFACES TO RECEIVE EPICURE TOPPING AND FLOOR FINISH SURFACE MATERIAL, PREFER TO INTERIOR SCHEDULE OF MATERIAL FOR CONDOOR FINISH.
  - FLOORS ADJACENT TO ALL ACCESSIBLE AND CONDOOR UNITS ENTRANCES SHALL HAVE FLOOR SURFACES NOT TO EXCEED 1/8" SLOPE FOR A DISTANCE OF 60" PERPENDICULAR TO THE DOOR. ACCESSIBLE THRESHOLDS SHALL BE PROVIDED AT ALL EXTERIOR AND BREEZEWAY DOORS ON AN ACCESSIBLE PATH. REFER TO SHEETS A1.04 AND 1.04.21 FOR TYPICAL DOOR THRESHOLD DETAILS.
  - NOTES, DIMENSIONS, SECTION TAGS AND DETAIL TAGS ARE INCLUDED ON THE ENLARGED A-2.0 SERIES BUILDING PLANS. REFER ALSO TO A-2.0 SHEETS A.01.04 AND A-2.0 SHEETS FOR NOTES, DIMENSIONS AND DETAIL TAGS RELATED TO STAIRS, ELEVATORS, FISHPOOLS, AMENITY BUILDINGS OR ACCESSORY BUILDINGS OR SPACES.
  - EXTERIOR, CONDOOR, STAIRWELL AND TENANT SEPARATION WALL TYPES AREA SHOWN ON OVERALL OR ENLARGED A-2.0 SERIES BUILDING PLANS. FOR WALL TYPES WITH UNIT PERIMETER WALLS, PLEASE REFER TO ADMIN UNIT SHEETS.
  - METER, RISER AND TELECOM ARE LOCATED ON THE BUILDING PLANS FOR REFERENCE ONLY. REFER TO CIVIL AND MEP AND TELECOM PLANS FOR THE ACTUAL METER AND EQUIPMENT SIZE AND LOCATION.
  - A MINIMUM RATED 1 1/2" FIRE EXTINGUISHERS ARE TO BE LOCATED EVERY 10' IN CONDOORS. REFER TO A-2.0 SERIES PLANS FOR LOCATIONS. ONE FIRE EXTINGUISHER SHALL BE VISIBLE AT EACH ELEVATOR LOBBY.
  - FLOOR TRUSSES SHALL CONTINUE A MINIMUM 20' INTO EACH OPEN CONDOOR. TERMINATE EXTERIOR FINISH MATERIAL AT NEAREST CORNER OR WALL BREAK AS INDICATED ON THE DRAWINGS.
  - WALL CONTROL JOINTS SHALL BE SPACED IN OPTIMUM WALL SPACING EVERY 30' MAX HORIZONTAL SPACING. WALL CONTROL JOINTS ARE ALSO RECOMMENDED AT DOOR JAMBS, EXTERIOR WINDOW AND CEILING. CEILING SYSTEM BOARD CONTROL JOINTS SHALL BE INSTALLED TO LIMIT THE CEILING AREA TO 1.00 SF PER JOINT AND BE IN THE SAME DIRECTION. CONTROL JOINTS SHOULD BE INSTALLED WHERE THERE IS A CHANGE IN DIRECTION IN CEILING FRAMING. PURRING OR SPICE CONTROL JOINTS AT THE CEILING AND WALL FOR THE MANUFACTURER'S RECOMMENDED INSTALLATION GUIDELINES. CEILING AND WALL CONTROL JOINTS ARE TO ALIGN AT ALL INTERSECTIONS WHERE APPLICABLE TO FORM A CONTINUOUS CONTROL JOINT. ENSURE THAT CONTROL JOINTS ARE LOCATED AT STRUCTURAL, CONSTRUCTION JOINTS AND AT THE TOP AND BOTTOM OF ALL INTERIOR RAMPS.
  - WHERE AN ELEVATOR OR STAIR EXIT IS WITHIN 2' OF AN IN-SLOPE CORNER OR OTHER POTENTIAL HINGE PLACE, POSITION A RETRACTING MIRROR TO ALLOW SOMEONE IN THE EXIT DOORWAY TO OBSERVE IN THE MIRROR THE AREA AROUND THE CORNER OR BEHIND THE ALCOVE THAT IS ADJACENT TO THE DOORWAY.

### SYMBOL LEGEND - BUILDING PLANS

	EXTERIOR ELEVATION TAG		CMU WALL
	WALL SECTION TAG		FIRE FIRE BARRIER
	DETAIL SECTION TAG		UNIT FIRE PARTITION
	PARTITION WALL TAG		UNIT FIRE PARTITION AT UNIT SEPARATION
	FIRE BARRIER		UNIT FIRE PARTITION AT CONDOORS
	TYPE 'X' AND UNITS		ASSIGNED PROPERTY LINE
	HEARING AND VISION IMPAIRED UNITS		1:12 DECK COPING LEDGE
	DOOR TAG SYMBOL		UNIT TYPE
	WINDOW TAG SYMBOL		SHEET NUMBER
	METER		UNIT NUMBER
	FIRE EXIT AND SEMI-ENCLOSED CABINET		ROOM NAME
	FIRE EXIT AND SEMI-ENCLOSED CABINET		FLOOR DROP
	FIRE EXIT AND SEMI-ENCLOSED CABINET		FINISHED FLOOR
	FIRE EXIT AND SEMI-ENCLOSED CABINET		ELEVATOR REFER TO CIVIL
	FIRE EXIT AND SEMI-ENCLOSED CABINET		ENTRANCE DOOR
	FIRE EXIT AND SEMI-ENCLOSED CABINET		IMPROVING CLEARANCE
	FIRE EXIT AND SEMI-ENCLOSED CABINET		FLOOR DRAIN LOCATION
	FIRE EXIT AND SEMI-ENCLOSED CABINET		NET, EXTRACT & HSP



Client By:	SR
Checked By:	
Date Plotted:	29 April 2022
Plot Date:	
Plot Time:	
Plot User:	
Plot Device:	
Plot Path:	
Plot Scale:	
Plot Orientation:	
Plot Color:	
Plot Font:	
Plot Line:	
Plot Fill:	
Plot Hatched:	
Plot Text:	
Plot Image:	
Plot Table:	
Plot Sheet:	
Plot Title:	
Plot Date:	
Plot User:	
Plot Device:	
Plot Path:	
Plot Scale:	
Plot Orientation:	
Plot Color:	
Plot Font:	
Plot Line:	
Plot Fill:	
Plot Hatched:	
Plot Text:	
Plot Image:	
Plot Table:	
Plot Sheet:	
Plot Title:	
Plot Date:	
Plot User:	
Plot Device:	
Plot Path:	
Plot Scale:	
Plot Orientation:	
Plot Color:	
Plot Font:	
Plot Line:	
Plot Fill:	
Plot Hatched:	
Plot Text:	
Plot Image:	
Plot Table:	
Plot Sheet:	
Plot Title:	
Plot Date:	
Plot User:	
Plot Device:	
Plot Path:	
Plot Scale:	
Plot Orientation:	
Plot Color:	
Plot Font:	
Plot Line:	
Plot Fill:	
Plot Hatched:	
Plot Text:	
Plot Image:	
Plot Table:	
Plot Sheet:	
Plot Title:	
Plot Date:	
Plot User:	
Plot Device:	
Plot Path:	
Plot Scale:	
Plot Orientation:	
Plot Color:	
Plot Font:	
Plot Line:	
Plot Fill:	
Plot Hatched:	
Plot Text:	
Plot Image:	
Plot Table:	
Plot Sheet:	
Plot Title:	
Plot Date:	
Plot User:	
Plot Device:	
Plot Path:	
Plot Scale:	
Plot Orientation:	
Plot Color:	
Plot Font:	
Plot Line:	
Plot Fill:	
Plot Hatched:	
Plot Text:	
Plot Image:	
Plot Table:	
Plot Sheet:	
Plot Title:	
Plot Date:	
Plot User:	
Plot Device:	
Plot Path:	
Plot Scale:	
Plot Orientation:	
Plot Color:	
Plot Font:	
Plot Line:	
Plot Fill:	
Plot Hatched:	
Plot Text:	
Plot Image:	
Plot Table:	
Plot Sheet:	
Plot Title:	
Plot Date:	
Plot User:	
Plot Device:	
Plot Path:	
Plot Scale:	
Plot Orientation:	
Plot Color:	
Plot Font:	
Plot Line:	
Plot Fill:	
Plot Hatched:	
Plot Text:	
Plot Image:	
Plot Table:	
Plot Sheet:	
Plot Title:	
Plot Date:	
Plot User:	
Plot Device:	
Plot Path:	
Plot Scale:	
Plot Orientation:	
Plot Color:	
Plot Font:	
Plot Line:	
Plot Fill:	
Plot Hatched:	
Plot Text:	
Plot Image:	
Plot Table:	
Plot Sheet:	
Plot Title:	
Plot Date:	
Plot User:	
Plot Device:	
Plot Path:	
Plot Scale:	
Plot Orientation:	
Plot Color:	
Plot Font:	
Plot Line:	
Plot Fill:	
Plot Hatched:	
Plot Text:	
Plot Image:	
Plot Table:	
Plot Sheet:	
Plot Title:	
Plot Date:	
Plot User:	
Plot Device:	
Plot Path:	
Plot Scale:	
Plot Orientation:	
Plot Color:	
Plot Font:	
Plot Line:	
Plot Fill:	
Plot Hatched:	
Plot Text:	
Plot Image:	
Plot Table:	
Plot Sheet:	
Plot Title:	
Plot Date:	
Plot User:	
Plot Device:	
Plot Path:	
Plot Scale:	
Plot Orientation:	
Plot Color:	
Plot Font:	
Plot Line:	
Plot Fill:	
Plot Hatched:	
Plot Text:	
Plot Image:	
Plot Table:	
Plot Sheet:	
Plot Title:	
Plot Date:	
Plot User:	
Plot Device:	
Plot Path:	
Plot Scale:	
Plot Orientation:	
Plot Color:	
Plot Font:	
Plot Line:	
Plot Fill:	
Plot Hatched:	
Plot Text:	
Plot Image:	
Plot Table:	
Plot Sheet:	
Plot Title:	
Plot Date:	
Plot User:	
Plot Device:	
Plot Path:	
Plot Scale:	
Plot Orientation:	
Plot Color:	
Plot Font:	
Plot Line:	
Plot Fill:	
Plot Hatched:	
Plot Text:	
Plot Image:	
Plot Table:	
Plot Sheet:	
Plot Title:	
Plot Date:	
Plot User:	
Plot Device:	
Plot Path:	
Plot Scale:	
Plot Orientation:	
Plot Color:	
Plot Font:	
Plot Line:	
Plot Fill:	
Plot Hatched:	
Plot Text:	
Plot Image:	
Plot Table:	
Plot Sheet:	
Plot Title:	
Plot Date:	
Plot User:	
Plot Device:	
Plot Path:	
Plot Scale:	
Plot Orientation:	
Plot Color:	
Plot Font:	
Plot Line:	
Plot Fill:	
Plot Hatched:	
Plot Text:	
Plot Image:	
Plot Table:	
Plot Sheet:	
Plot Title:	
Plot Date:	
Plot User:	
Plot Device:	
Plot Path:	
Plot Scale:	
Plot Orientation:	
Plot Color:	
Plot Font:	
Plot Line:	
Plot Fill:	
Plot Hatched:	
Plot Text:	
Plot Image:	
Plot Table:	
Plot Sheet:	
Plot Title:	
Plot Date:	
Plot User:	
Plot Device:	
Plot Path:	
Plot Scale:	
Plot Orientation:	
Plot Color:	
Plot Font:	
Plot Line:	
Plot Fill:	
Plot Hatched:	
Plot Text:	
Plot Image:	
Plot Table:	
Plot Sheet:	
Plot Title:	
Plot Date:	
Plot User:	
Plot Device:	
Plot Path:	
Plot Scale:	
Plot Orientation:	
Plot Color:	
Plot Font:	
Plot Line:	
Plot Fill:	
Plot Hatched:	
Plot Text:	
Plot Image:	
Plot Table:	
Plot Sheet:	
Plot Title:	
Plot Date:	
Plot User:	
Plot Device:	
Plot Path:	
Plot Scale:	
Plot Orientation:	
Plot Color:	
Plot Font:	
Plot Line:	
Plot Fill:	
Plot Hatched:	
Plot Text:	
Plot Image:	
Plot Table:	
Plot Sheet:	
Plot Title:	
Plot Date:	
Plot User:	
Plot Device:	
Plot Path:	
Plot Scale:	
Plot Orientation:	
Plot Color:	
Plot Font:	
Plot Line:	
Plot Fill:	
Plot Hatched:	
Plot Text:	
Plot Image:	
Plot Table:	
Plot Sheet:	
Plot Title:	
Plot Date:	
Plot User:	
Plot Device:	
Plot Path:	
Plot Scale:	
Plot Orientation:	
Plot Color:	
Plot Font:	
Plot Line:	
Plot Fill:	
Plot Hatched:	
Plot Text:	
Plot Image:	
Plot Table:	
Plot Sheet:	
Plot Title:	
Plot Date:	
Plot User:	
Plot Device:	
Plot Path:	
Plot Scale:	
Plot Orientation:	
Plot Color:	
Plot Font:	
Plot Line:	
Plot Fill:	
Plot Hatched:	
Plot Text:	
Plot Image:	
Plot Table:	
Plot Sheet:	
Plot Title:	
Plot Date:	
Plot User:	
Plot Device:	
Plot Path:	
Plot Scale:	
Plot Orientation:	
Plot Color:	
Plot Font:	
Plot Line:	
Plot Fill:	
Plot Hatched:	
Plot Text:	
Plot Image:	
Plot Table:	
Plot Sheet:	
Plot Title:	
Plot Date:	
Plot User:	
Plot Device:	
Plot Path:	
Plot Scale:	
Plot Orientation:	
Plot Color:	
Plot Font:	
Plot Line:	
Plot Fill:	
Plot Hatched:	
Plot Text:	
Plot Image:	
Plot Table:	
Plot Sheet:	
Plot Title:	
Plot Date:	
Plot User:	
Plot Device:	
Plot Path:	
Plot Scale:	
Plot Orientation:	
Plot Color:	
Plot Font:	
Plot Line:	
Plot Fill:	
Plot Hatched:	
Plot Text:	
Plot Image:	
Plot Table:	
Plot Sheet:	
Plot Title:	
Plot Date:	
Plot User:	
Plot Device:	
Plot Path:	
Plot Scale:	
Plot Orientation:	
Plot Color:	
Plot Font:	
Plot Line:	
Plot Fill:	
Plot Hatched:	
Plot Text:	
Plot Image:	
Plot Table:	
Plot Sheet:	
Plot Title:	
Plot Date:	
Plot User:	
Plot Device:	
Plot Path:	
Plot Scale:	
Plot Orientation:	
Plot Color:	
Plot Font:	
Plot Line:	
Plot Fill:	
Plot Hatched:	
Plot Text:	
Plot Image:	
Plot Table:	
Plot Sheet:	
Plot Title:	
Plot Date:	
Plot User:	
Plot Device:	
Plot Path:	
Plot Scale:	
Plot Orientation:	
Plot Color:	
Plot Font:	
Plot Line:	
Plot Fill:	

- (BLDG 1) - FIBER CEMENT LAP SIDING (8'11"H)
- (BLDG 1) - FIBER CEMENT LAP SIDING (1'8"H)
- (BLDG 1) - (3'X6') Window deduct
- (BLDG 1) - (4'X6') Window deduct
- (BLDG 1) - (5'X6') Window deduct
- (BLDG 1) - (3'x8'H) Door Deduct
- (BLDG 1) - (2'8"x8'H) Door Deduct
- (BLDG 1) - (4"H) Trim
- (BLDG 1) - GWB CEILING
- (BLDG 1) - DOOR 101
- (BLDG 1) - DOOR 104
- (BLDG 1) - DOOR 102
- GWB TYPE "C"

GENERAL BUILDING	
901.3 FT	345.9 FT
10.0	11.0
14.0	35.0
4.0	12.3 FT
4,614.6 SQ FT	2.0
	3.0
	1.0
	1,927.7 SQ FT

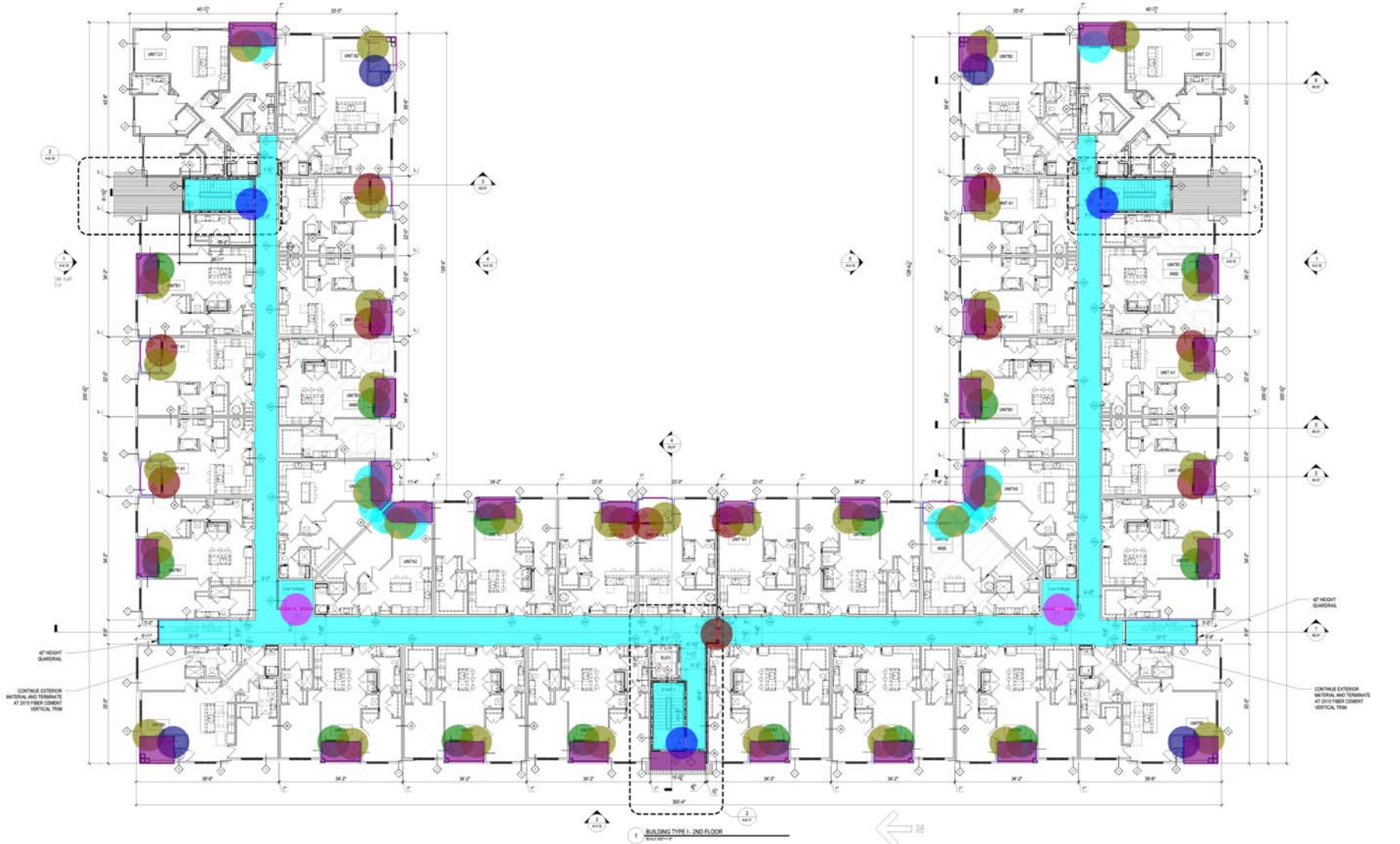
SYMBOL LEGEND - BUILDING PLANS	
EXTERIOR ELEVATION TAG	CMU WALL
WALL SECTION TAG	1/2" FIRE BARRIER
DETAIL SECTION TAG	1/4" FIRE PARTITION
PARTITION WALL TAG	1/4" FIRE PARTITION AT UNIT SEPARATION
1/4" FIRE PARTITION	1/4" FIRE PARTITION AT CORNERS
ASSIGNED PROPERTY LINE	UNIT TYPE
SHEET NUMBER	ROOM NAME
UNIT NUMBER	ROOM NUMBER
FLOOR DROP	FRAMED FLOOR
ELEVATION REFER TO CIVIL	ENTRANCE DOOR
IMPROVING CLEARANCE	FLOOR DRAIN LOCATION
REF. STRICT & MEP	

NO.	DATE	DESCRIPTION
1	29 April 2022	Issue for Pricing, Bidding
2		Issue for Permit Application
3		Issue for Construction

NO.	DATE	COMMENTS
1		
2		
3		
4		
5		
6		
7		
8		
9		
10		

© 2018 by Humphreys & Partners Architects / Florida, LLC. All Rights Reserved.  
 The architectural works depicted herein are the sole property of Humphreys & Partners Architects, L.P. and may not be reproduced or used without its express written permission. No permission is granted to reproduce any of the architectural works, including without limitation the construction of any building, in any form or by any means, electronic or mechanical, including photocopying, recording, or by any information storage and retrieval system, without the prior written consent of Humphreys & Partners Architects, L.P. and in the absence of any written agreement to the contrary, it is intended to be a one-time use of the site subject to these plans.

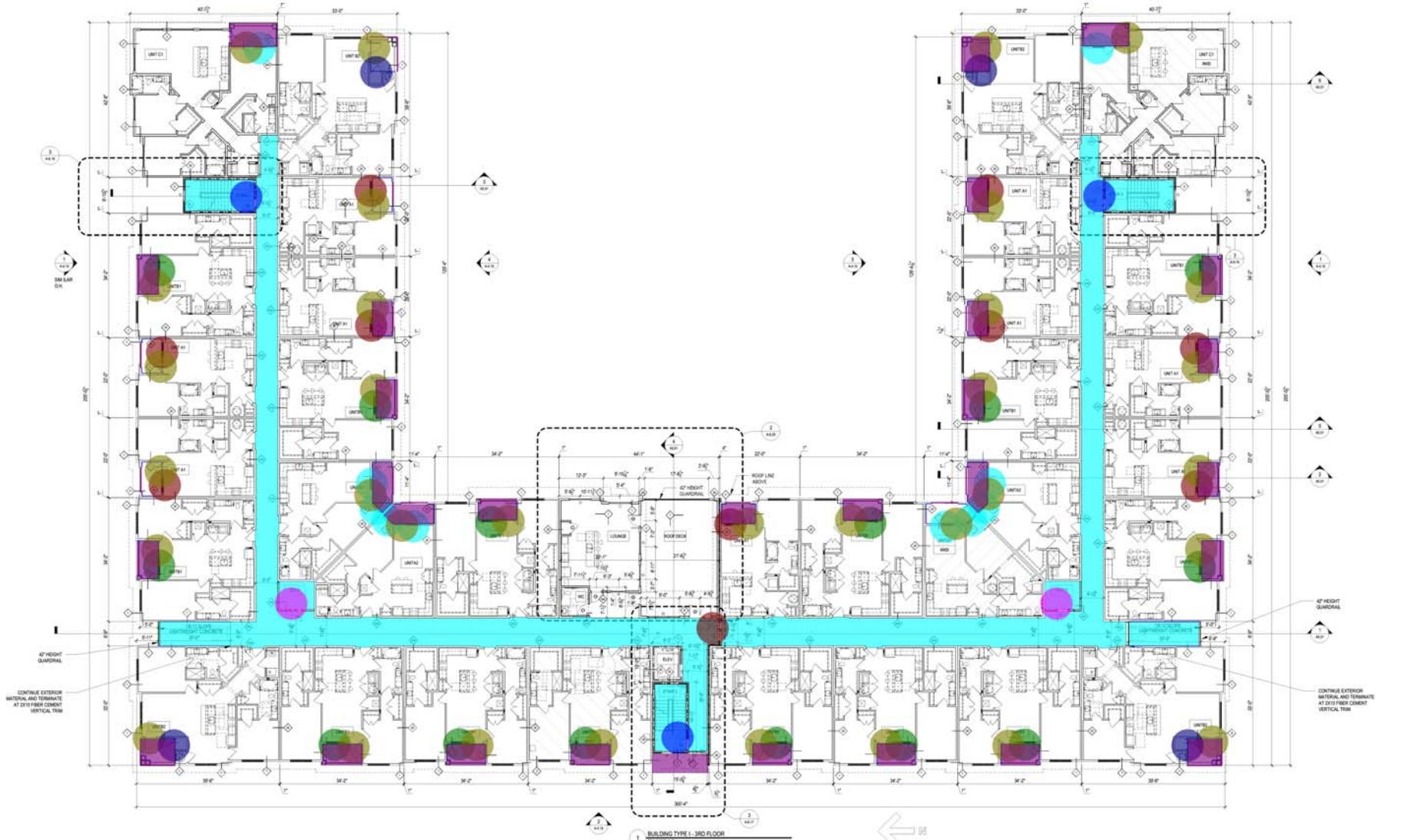
**HUMPHREYS & PARTNERS ARCHITECTS / FLORIDA, LLC**  
 911 EAST HONOLULU AVE. STE 300 HONOLULU, HI 96813  
 DALLAS, TEXAS 75201  
 CHICAGO, ILLINOIS 60611  
 DENVER, COLORADO 80202  
 HOUSTON, TEXAS 77002  
 LOS ANGELES, CALIFORNIA 90001  
 MIAMI, FLORIDA 33131  
 NEW YORK, NEW YORK 10001  
 PHOENIX, ARIZONA 85001  
 PORTLAND, OREGON 97201  
 SAN FRANCISCO, CALIFORNIA 94102  
 SEATTLE, WASHINGTON 98101  
 TAMPA, FLORIDA 33601  
 WASHINGTON, D.C. 20001  
 WASHINGTON STATE 98001  
 WICHITA, KANSAS 67201  
 WISCONSIN 53001  
 WYOMING 82001  
 CERTIFICATE #BA 000027



- (BLDG 1) - FIBER CEMENT LAP SIDING (8"11"H)
- (BLDG 1) - FIBER CEMENT LAP SIDING (1'8"H)
- (BLDG 1) - (3'X6') Window deduct
- (BLDG 1) - (4'X6') Window deduct
- (BLDG 1) - (5'X6') Window deduct
- (BLDG 1) - (3'X8'H) Door Deduct
- (BLDG 1) - (2'8"x8'H) Door Deduct
- (BLDG 1) - GWB CEILING
- (BLDG 1) - DOOR 101
- (BLDG 1) - DOOR 104
- (BLDG 1) - DOOR 102
- (BLDG 1) - 42"H GUARD RAIL PAINT
- GWB TYPE "C"

GENERAL BUILDING	
852.2 FT	INSPECT IN A-10 DRAWINGS
330.9 FT	HIGH SLOPE AS INDICATED ON DWGS. CONDITIONED CORRIDOR SURFACES TO RECEIVE GYPSUM TOPPING AND CORRIDOR FINISH
10.0	IF FLOOR SURFACE NOT TO EXCEED 1% SLOPE FOR A DISTANCE OF 60' PERPENDICULAR TO THE DOOR
9.0	DOGS ON AN ACCESSIBLE PATH. REFER TO SHEETS A-10 AND 1-2A(2) FOR TYPICAL DOOR THRESHOLD DETAILS
14.0	DOGS ON ACCESSIBLE BUILDING OR SPACES
33.0	ON OVERALL OR ENLARGED A-10 SERIES BUILDING PLANS. FOR WALL TYPES WITH UNIT PERIMETER WALLS
4.0	ONLY REFER TO CIVIL AND MEP AND TELECOM PLANS FOR THE ACTUAL METER AND EQUIPMENT SIZE AND LOCATIONS
4,617.4 SQ FT	TERMINATE EXTERIOR FINISH MATERIAL AT NEAREST CORNER OR WALL BREAK AS INDICATED ON THE DRAWINGS
2.0	USE FINISHED WALL CONTROL JOINTS AND ALSO RECOMMENDED AT DOOR JAMBES, EXTERIOR WINDOW COULSERS AND THE CEILING AREA TO 2'00" OF WALL AND 6" FROM WINDOW CONTROL JOINTS SHOULD BE INSTALLED THREE JOINTS AT THE CEILING AND WALL PER THE MANUFACTURER'S RECOMMENDED INSTALLATION GUIDELINES. CEILING TO FORM A CONTINUOUS CONTROL JOINT. INSURE THAT CONTROL JOINTS ARE LOCATED AT STRUCTURAL
3.0	IF PREFERRED, HANG PLACE POSITION REFLECTING MIRROR TO ALLOW SOMEONE IN THE EXIT CORRIDWAY TO BE ADJACENT TO THE CORRIDWAY
1.0	
13.7 FT	
1,874.4 SQ FT	

SYMBOL LEGEND - BUILDING PLANS	
EXTERIOR ELEVATION TAG	CLAU WALL
WALL SECTION TAG	WALL FIRE BARRIER
DETAIL SECTION TAG	WALL FIRE PARTITION AT UNIT SEPARATION
PARTITION WALL TAG	WALL FIRE PARTITION AT CORRIDORS
FURROUR	ASSIGNED PROPERTY LINE
TYPE X AND UNITS	UNIT TYPE
HEARING AND VISION IMPAIRED UNITS	SHEET NUMBER
DOOR TAG SYMBOL	UNIT NUMBER
WINDOW TAG SYMBOL	ROOM NAME
METER	FLOOR DROP
FIRE EXIT AND SEMI-RECESSED CABINET	FINISHED FLOOR ELEVATION REFER TO CIVIL
SMOOTH WALL FINISH. MAX 1/8" UP TO TOP OF CABINET. MAX 3/4" TRAVEL DISTANCE. LEADING EDGE MUST BE BELOW 2"	ENTRANCE DOOR
	MINIMUM CLEARANCE
	FLOOR DRUM LOCATIONS
	REF. STRICT & MEP



Client By: 29 April 2022	
Checked By:	
Date Plotted:	
Issue Date:	
Issue For Printing, Bidding:	
Issue For Permit Application:	
Issue For Construction:	
Revision:	
NO. DATE COMMENTS	
1	
2	
3	
4	
5	
6	
7	
8	
9	
10	

© 2018 by Humphreys & Partners Architects / Florida, LLC. All Rights Reserved.  
 The architectural works depicted herein are the sole property of Humphreys & Partners Architects, L.P. and may not be reproduced or used without its express written permission. No permission is granted to reproduce any of the architectural works, including without limitation the construction of any building, in any form or by any means, electronic, mechanical, photocopying, recording, or by any information storage and retrieval system, without the prior written approval of Humphreys & Partners Architects, L.P. and its affiliates. Any such reproduction, distribution, or use without the prior written approval of Humphreys & Partners Architects, L.P. and its affiliates is prohibited. This document is intended to be used as a guide only and is not to be relied upon for any other purpose.

**HUMPHREYS & PARTNERS**  
**ARCHITECTS / FLORIDA, LLC**  
 911 EAST HONOLULU AVE. STE 300 HONOLULU, HI 96813  
 DALLAS, TEXAS 75201  
 CHICAGO, ILLINOIS 60601  
 DENVER, COLORADO 80202  
 HOUSTON, TEXAS 77002  
 LOS ANGELES, CALIFORNIA 90001  
 MIAMI, FLORIDA 33131  
 NEW YORK, NEW YORK 10001  
 PHOENIX, ARIZONA 85001  
 PORTLAND, OREGON 97201  
 SAN FRANCISCO, CALIFORNIA 94102  
 SEATTLE, WASHINGTON 98101  
 TAMPA, FLORIDA 33601  
 WASHINGTON, D.C. 20001  
 WASHINGTON STATE 98001  
 WISCONSIN 53001  
 WYOMING 82001



PROJECT: BLDG TYPE 1 - 3RD FLOOR PLAN  
 SHEET NO. A-4.13



4 BUILDING TYPE I - EXTERIOR ELEVATION COURTYARD RIGHT

GENERAL BUILDING NOTES		SYMBOL LEGEND - BUILDING PLANS	
	(BLDG 1) - FIBER CEMENT LAP SIDING		11,303.9 SQ FT
	(BLDG 1) - BRICK		5,508.4 SQ FT
	(BLDG 1) - (6" H) Trim		1,897.1 FT
	(BLDG 1) - (8" H) Trim		1,572.4 FT
	(BLDG 1) - (4" H) Trim		3,778.4 FT
	(BLDG 1) - BRICK HEADER		385.1 FT
	(BLDG 1) - BRICK SILL		295.8 FT
	TYPE A WINDOW		12.0
	TYPE B WINDOW		162.0
	TYPE G WINDOW		20.0
	TYPE D WINDOW		9.0
	TYPE AA WINDOW		5.0
	SF		190.2 SQ FT



3 BUILDING TYPE I - EXTERIOR ELEVATION REAR



2 BUILDING TYPE I - EXTERIOR ELEVATION FRONT



5 BUILDING TYPE I - EXTERIOR ELEVATION COURTYARD LEFT



1 BUILDING TYPE I - EXTERIOR RIGHT ELEVATION / LEFT ELEVATION OPPOSITE HAND

Client By:   
 Checked By:   
 Date Plotted: 29 April 2022   
 New Date:   
 Area for Pricing, Bidding:   
 Area for Permit Application:   
 Area for Construction:   
 Revision:   
 # DATE COMMENTS   
 © 2018 by Humphreys & Partners Architects / Florida, L.L.C. All Rights Reserved.   
 The architectural works depicted herein are the sole property of Humphreys & Partners Architects, L.P. and may not be reproduced or used without its express written permission. No permission is granted or reproduction any of the architectural works, including without limitation the construction of any building, is approved or should be implied from delivery of preliminary drawings or issued construction drawings. Permission to construct the building depicted in issued construction drawings is expressly conditioned on the full and timely payment of all fees otherwise due Humphreys & Partners Architects, L.P. and in the absence of any written agreement to the contrary, is voided in a one-time use on the site subject to these plans.

**HUMPHREYS & PARTNERS**  
 ARCHITECTS / FLORIDA, LLC  
 911 EAST HONOLULU AVE. STE 300 WILMINGTON, FL 32791  
 DALLAS, TEXAS 75201  
 HOUSTON, TEXAS 77002  
 CHICAGO, ILLINOIS 60601  
 MIAMI, FLORIDA 33130  
 CERTIFICATE # BA 000027



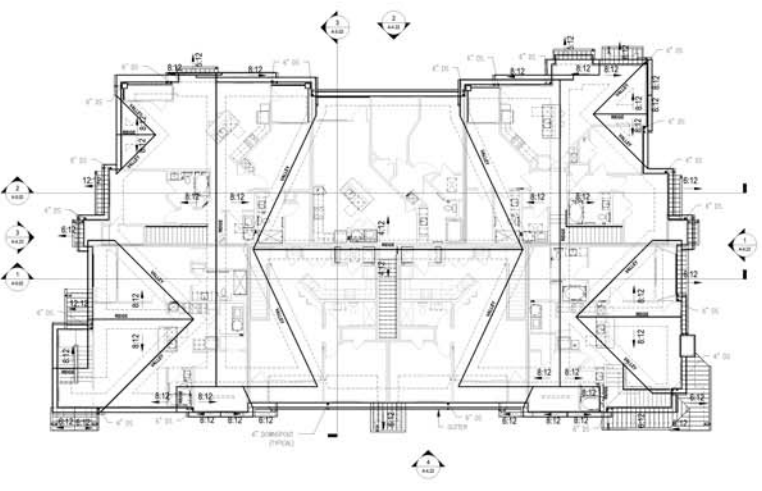
PROJECT NUMBER:   
 BLDG TYPE I -   
 EXTERIOR ELEVATIONS   
 SHEET NO.   
**A-4.15**

90% CD SET - 04/29/2022

- (BLDG 2) - FIBER CEMENT LAP SIDING (9'6"H) 161.6 FT
- (BLDG 2) - FIBER CEMENT LAP SIDING (17'6"H) 3.6 FT
- (BLDG 2) - FIBER CEMENT LAP SIDING (8'11"H) 135.0 FT
- (BLDG 2) - (6'6"X6'6") Window deduct 2.0
- (BLDG 2) - (6'X6'6") Window deduct 6.0
- (BLDG 2) - (3'X6") Window deduct 2.0
- (BLDG 2) - (2'6"X6') Window deduct 2.0
- (BLDG 2) - (3'X8'H) Door Deduct 11.0
- (BLDG 2) - FIBER CEMENT LAP SIDING (8"H) 144.7 FT
- (BLDG 2) - FIBER CEMENT LAP SIDING TRIM (1'4"H) 46.1 FT
- (BLDG 2) - GWB CEILING 14,505.6 SQ FT
- (BLDG 2) - DOOR 1 5.0
- (BLDG 2) - DOOR 23 5.0
- (BLDG 2) - DOOR 20 9.0
- (BLDG 2) - DOOR 21 1.0
- (BLDG 2) - DOOR 101 1.0
- (BLDG 2) - DOOR 22 2.0
- (42") GUARD RAIL PAINT 132.1 FT
- (BLDG 2) - INTERIOR GWB WALL (9'1"H) 1,243.2 FT
- (BLDG 2) - (2 HR) EXTERIOR GWB WALL (9'1"H) 990.1 FT
- (BLDG 2) - (5/8") TYPE "C" GWB CEILING 658.2 SQ FT
- (BLDG 2) - (1 HR) INTERIOR GWB WALL (9'1"H) 181.8 FT
- (BLDG 2) - (1 HR) INTERIOR DEMISING GWB WALL (9'1"H) 719.2 FT
- (BLDG 2) - (1 HR) INTERIOR GWB WALL (3'10"H) 52.7 FT
- (BLDG 2) - INTERIOR GWB WALL (3'H) 93.8 FT



4 BUILDING TYPE II ALTI-1ST FLOOR



3 BUILDING TYPE II - ROOF

GENERAL BUILDING NOTES

1. PLEASE NOTE - BUILDING PLANS MAY DEPICT MIRRORRED VERSION OF UNIT LAYOUTS DEPICTED IN A-2-B DRAWINGS
2. PROVIDE A BROOM FINISH AT ALL EXTERIOR SLOPED CONCRETE SURFACES.
3. BREEZEWAY CONCRETE SPACES TO RECEIVE A LEAF BRONX GRADED FINISH. SLOPE AS INDICATED ON DWGS. CONDITIONED CORRIDOR SURFACES TO RECEIVE EPICORITE TOPPING AND FLOOR FINISH SURFACE MATERIAL. PREFER TO INTERIOR SCHEDULE OF MATERIAL FOR CORRIDOR FINISH.
4. FLOORS ADJACENT TO ALL ACCESSIBLE (AND "CORRIDOR") ENTRIES SHALL HAVE FLOOR SURFACES NOT TO EXCEED 1/4" SLOPE FOR A DISTANCE OF 60" PERPENDICULAR TO THE DOOR.
5. ACCESSIBLE THRESHOLDS SHALL BE PROVIDED AT ALL EXTERIOR AND BREEZEWAY DOORS ON AN ACCESSIBLE PATH. REFER TO SHEETS A1-01 AND A1-02 (BY) FOR TYPICAL DOOR THRESHOLD DETAILS.
6. NOTES, DIMENSIONAL SECTION TAGS AND DETAIL TAGS ARE INCLUDED ON THE ENLARGED A-3-01 SERIES BUILDING PLANS. REFER ALSO TO A-6-01 SHEETS, A-4-01 AND A-4-02 SHEETS FOR NOTES, DIMENSIONAL AND DETAIL TAGS RELATED TO STAIRS, ELEVATORS, FISHPOOLS, AMENITY BUILDINGS OR SPACES.
7. EXTERIOR CORRIDOR, STAIRWELL AND TENANT SEPARATION WALL TYPES AREA SHOWN ON OVERALL OR ENLARGED A-4-01 SERIES BUILDING PLANS. FOR WALL TYPES WITH UNIT PERIMETER WALLS, PLEASE REFER TO ADMIN UNIT SHEETS.
8. METER, RISER AND TELECOM CABS ON THE BUILDING PLANS FOR REFERENCE ONLY. REFER TO CIVIL AND MEP AND TELECOM PLANS FOR THE ACTUAL METER AND EQUIPMENT SIZE AND LOCATION.
9. A MINIMUM RATED 15 MIN. FIRE EXTINGUISHERS ARE TO BE LOCATED EVERY 10' IN CORRIDORS. REFER TO A-4-01 SERIES PLANS FOR LOCATIONS. ONE FIRE EXTINGUISHER SHALL BE VISIBLE AT EACH ELEVATOR LOBBY.
10. A MINIMUM RATED 15 MIN. FIRE EXTINGUISHERS ARE TO BE LOCATED EVERY 10' INTO EACH OPEN CORRIDOR. TERMINATE EXTERIOR FINISH MATERIAL AT NEAREST CORNER OR WALL BREAK AS INDICATED ON THE DRAWINGS.
11. FLOOR TRUSSES AND DECK SHALL SLOPE MINIMUM 1/8" - 1/4" PER FOOT TOWARDS BREEZEWAY CORRIDOR OPENINGS FOR A MINIMUM OF 20' OR AS INDICATED ON THE DRAWINGS.
12. WALL CONTROL JOINTS SHALL BE SPACED IN OPTIMAL WALL SPACING. EVERY 30' MAX HORIZONTAL SPACING. WALL CONTROL JOINTS ARE ALSO RECOMMENDED AT DOOR JAMBES, EXTERIOR FINISH CORNER AND TO CEILING. CEILING SYSTEM BOARD CONTROL JOINTS SHALL BE INSTALLED TO LIMIT THE CEILING AREA TO 1300 SF MAX AND BE IN HORIZONTAL DIRECTION. CONTROL JOINTS SHOULD BE INSTALLED WHERE THERE IS A CHANGE IN DIRECTION IN CEILING FRAMING. TURNING OR SPACE CONTROL JOINTS AT THE CEILING AND WALL PER THE MANUFACTURER'S RECOMMENDED INSTALLATION GUIDELINES. CEILING AND WALL CONTROL JOINTS ARE TO ALIGN AT ALL INTERSECTIONS WHERE APPLICABLE TO FORM A CONTINUOUS CONTROL JOINT. INSURE THAT CONTROL JOINTS ARE LOCATED AT STRUCTURAL, CONSTRUCTION JOINTS AND AT THE TOP AND BOTTOM OF ALL EXTERIOR RAMPS.
13. WHERE AN ELEVATOR OR STAIR EXIT IS WITHIN 2' OF AN EXISTING CORNER OR OTHER POTENTIAL HAZARD PLACE, POSITION AN IMPACTING MIRROR TO ALLOW SOMEONE IN THE EXIT DOORWAY TO OBSERVE IN THE MIRROR THE AREA AROUND THE CORNER OR BEHIND THE ALCOVE THAT IS ADJACENT TO THE DOORWAY.

SYMBOL LEGEND - BUILDING PLANS

EXTERIOR ELEVATION TAG	CMU WALL
WALL SECTION TAG	1/2" FIRE BARRIER
DETAIL SECTION TAG	1/2" FIRE PARTITION
PARTITION WALL TAG	AT UNIT SEPARATION
1/2" FIRE PARTITION	1/2" FIRE PARTITION
ASSIGNED PROPERTY LINE	1/2" FIRE PARTITION
UNIT TYPE	AT CORRIDORS
SHEET NUMBER	1/2" FIRE PARTITION
UNIT NUMBER	AT CORRIDORS
ROOM NAME	ASSIGNED PROPERTY LINE
FLOOR DROP	1/2" FIRE PARTITION
FINISHED FLOOR	1/2" FIRE PARTITION
ELEVATION REFER TO CIVIL	1/2" FIRE PARTITION
UNFINISHED DOOR	1/2" FIRE PARTITION
IMPACTING CLEARANCE	1/2" FIRE PARTITION
FLOOR DRAIN LOCATION	1/2" FIRE PARTITION
REF. ERECT & MEP	1/2" FIRE PARTITION



2 BUILDING TYPE II - 2ND FLOOR



1 BUILDING TYPE II - 1ST FLOOR

Client By:   
 Checked By:   
 Date Plotted: 29 April 2022   
 New Date:   
 Area for Printing, Bidding   
 Area for Permit Application   
 Area for Construction   
 Name:   
 # of SHEETS   
 COMMENTS

© 2018 by Humphreys & Partners Architects / Florida LLC. All Rights Reserved.   
 The architectural works depicted herein are the sole property of Humphreys & Partners Architects, L.P. and may not be reproduced or used without its express written permission. No permission is granted to reproduce any of the architectural works, including without limitation the construction of any building, in any form or by any means, without the express or implied consent of Humphreys & Partners Architects, L.P. and in the absence of any written agreement to the contrary, it is intended to be a one-time use of the site subject to these plans.

**HUMPHREYS & PARTNERS**  
**ARCHITECTS / FLORIDA LLC**  
 91 EAST HONOLULU AVE. STE 300 WILMINGTON, FL 32791  
 DALLAS, TEXAS 75201  
 HOUSTON, TEXAS 77002  
 CHICAGO, ILLINOIS 60601  
 WASHINGTON, D.C. 20001  
 CERTIFICATE # BA 1000027



PROJECT: BLDG TYPE 2 - 1ST, 2ND RCP, ROOF, ALTI  
 SHEET NO. **A-4.21**

**GENERAL BUILDING NOTES**

- PLEASE NOTE - BUILDING PLANS MAY DEPICT MIRRORED VERSION OF UNIT LAYOUTS DEPICTED IN A-2.0 DRAWINGS
- PROVIDE A BRICK FINISH AT ALL EXTERIOR SLOPED CONCRETE SURFACES
- BREEZEWAY CONCRETE SURFACES TO RECEIVE A LIGHT BROWN GRADED FINISH. SLOPE AS INDICATED ON DWG. CONDITIONED CORRIDOR SURFACES TO RECEIVE EPICORITE TOPPING AND FLOOR FINISH SURFACE MATERIAL. REFER TO INTERIOR SCHEDULE OF MATERIAL FOR CORRIDOR FINISH
- FLOORS ADJACENT TO ALL ACCESSIBLE AND "CORRIDOR" UNIT ENTRANCES SHALL HAVE FLOOR SURFACES NOT TO EXCEED 1/8" SLOPE FOR A DISTANCE OF 60" PERPENDICULAR TO THE DOOR
- ACCESSIBLE THRESHOLDS SHALL BE PROVIDED AT ALL EXTERIOR AND BREEZEWAY DOORS ON AN ACCESSIBLE PATH. REFER TO SHEETS AT 1:0 AND 1:2A.01 FOR TYPICAL DOOR THRESHOLD DETAILS
- NOTES DIMENSIONAL SECTION TAGS AND DETAIL TAGS ARE INCLUDED ON THE ENLARGED A-4.0 SERIES BUILDING PLANS. REFER ALSO TO A-6.0 SHEETS, A-4.0 AND A-9.0 SHEETS FOR NOTES. DIMENSIONAL AND DETAIL TAGS RELATED TO STAIRS, ELEVATORS, FINISH FLOORS, AMENITY BUILDINGS OR ACCESSORY BUILDINGS OR SPACES
- EXTERIOR, CORRIDOR, STAIRWELL, AND TENANT SEPARATION WALL TYPES AREA SHOWN ON OVERALL OR ENLARGED A-4.0 SERIES BUILDING PLANS. FOR WALL TYPES WITH UNIT PERIMETER WALLS, PLEASE REFER TO UNIT SHEETS
- METER, RISER, AND TELECOM ARE LOCATED ON THE BUILDING PLANS FOR REFERENCE ONLY. REFER TO CIVIL AND MEP AND TELECOM PLANS FOR THE ACTUAL METER AND EQUIPMENT SIZE AND LOCATION
- A MINIMUM RATED 5/16" C. FIRE EXTINGUISHERS ARE TO BE LOCATED EVERY 10' IN CORRIDORS. REFER TO A-4.0 SERIES PLANS FOR LOCATIONS. ONE FIRE EXTINGUISHER SHALL BE VISIBLE AT EACH ELEVATOR LOBBY
- A MINIMUM RATED 5/16" C. FIRE EXTINGUISHERS ARE TO BE LOCATED EVERY 10' INTO EACH OPEN CORRIDOR. TERMINATE EXTERIOR FINISH MATERIAL AT NEAREST CORNER OR WALL BREAK AS INDICATED ON THE DRAWING
- EXTERIOR FINISHES SHALL CONTINUE A MINIMUM 18" - 1' PER FOOT TOWARD BREEZEWAY/CORRIDOR OPENINGS FOR A MINIMUM OF 24" ON AS INDICATED ON THE DRAWING
- WALL CONTROL JOINTS SHALL BE SPACED IN OPTIMAL WALL SPACING EVERY 30' MAX HORIZONTAL SPACING. WALL CONTROL JOINTS ARE ALSO RECOMMENDED AT DOOR JAMBS, EXTERIOR FINISH DOOR AND TO CEILING. CEILING SYSTEM HANGERS CONTROL JOINTS SHALL BE METALLIC TO LIMIT THE CEILING AREA TO 1.00 SF WALL, AND 8' IN EITHER DIRECTION. CONTROL JOINTS SHOULD BE INSTALLED WHERE THERE IS A CHANGE IN DIRECTION IN CEILING FRAMING, TURNING OR SPACED CONTROL JOINTS AT THE CEILING AND WALL PER THE MANUFACTURERS RECOMMENDED METALLIZATION SCHEDULES. CEILING AND WALL CONTROL JOINTS ARE TO ALIGN AT ALL INTERSECTIONS WHERE APPLICABLE TO FORM A CONTINUOUS CONTROL JOINT. ENSURE THAT CONTROL JOINTS ARE LOCATED AT STRUCTURAL CONSTRUCTION JOINTS AND AT THE TOP AND BOTTOM OF ALL EXTERIOR RAMPS
- WHERE AN ELEVATOR OR STAIR EXIT IS WITHIN 2' OF AN ALCOVE, CORNER OR OTHER POTENTIAL HINGING PLACE, POSITION A REFLECTING MIRROR TO ALLOW SOMEONE IN THE EXIT CORRIDORWAY TO OBSERVE IN THE MIRROR THE AREA AROUND THE CORNER OR WITHIN THE ALCOVE THAT IS ADJACENT TO THE CORRIDORWAY

**SYMBOL LEGEND - BUILDING PLANS**

EXTERIOR ELEVATION TAG	CONCRETE BRACKET (WOOD TRIM)	CLAU WALL
WALL SECTION TAG	COMPOSITION SHINGLES	1/4" FIRE BARRIER
DETAIL SECTION TAG	FIBER CEMENT LAP SIDING (TYP. AT BALCONIES)	1/4" FIRE PARTITION AT UNIT SEPARATION
PARTITION WALL TAG	FIBER CEMENT LAP SIDING (TYP. AT BALCONIES)	1/4" FIRE PARTITION AT CORRIDORS
MURBORING	METAL ROOF	ASSIGNED PROPERTY LINE
TYPE A AND UNITS	COMPOSITION SHINGLES	1" OF BRICK STONE LOGGE
MATERIAL AND VISION IMPAIRED UNITS	FIBER CEMENT LAP SIDING (TYP. AT BALCONIES)	UNIT TYPE
DOOR TAG SYMBOL	FIBER CEMENT LAP SIDING (TYP. AT BALCONIES)	SHEET NUMBER
WINDOW TAG SYMBOL	FIBER CEMENT LAP SIDING (TYP. AT BALCONIES)	UNIT NUMBER
METER	FIBER CEMENT LAP SIDING (TYP. AT BALCONIES)	ROOM NAME
FIRE EXIT AND SEMI-RECESSED CABINET SWITCHING PANELS. MAX 10' APART TO TOP OF CABINET. MAX 3' FT TRAVEL DISTANCE. LEADING EDGE MUST BE 8" BELOW FT.	FIBER CEMENT LAP SIDING (TYP. AT BALCONIES)	FLOOR DROP
	FIBER CEMENT LAP SIDING (TYP. AT BALCONIES)	FINISHED FLOOR ELEVATION REFER TO CIVIL
	FIBER CEMENT LAP SIDING (TYP. AT BALCONIES)	ENTRANCE DOOR IMPROVING CLEARANCE
	FIBER CEMENT LAP SIDING (TYP. AT BALCONIES)	FLOOR DRAIN LOCATION, REF. STRUCT & MEP

	(BLDG 2) - FIBER CEMENT LAP SIDING	4,639.1 SQ FT
	(BLDG 2) - BRICK	2,126.2 SQ FT
	(BLDG 2) - (6"H) Trim	311.1 FT
	(BLDG 2) - (8"H) Trim	728.6 FT
	(BLDG 2) - (4"H) Trim	1,978.1 FT
	(BLDG 2) - BRICK HEADER	82.0 FT
	(BLDG 2) - BRICK SILL	76.4 FT
	(BLDG 2) - BRICK STONE CAP	115.2 FT
	(42") GUARD RAIL PAINT	68.9 FT
	TYPE A WINDOW	9.0
	TYPE B WINDOW	30.0
	TYPE C WINDOW	10.0
	TYPE G WINDOW	5.0
	TYPE E WINDOW	1.0



Client By:   
 Checked By:   
 Date Plotted: 29 April 2022   
 New Date:   
 New Plotting:   
 New Plot Application:   
 New Color Schemes:   
 Name:   
 Layers:   
 Comments:

© 2018 by Humphreys & Partners Architects / Florida, L.L.C. All Rights Reserved   
 The intellectual works depicted herein are the sole property of Humphreys & Partners Architects, L.P. and may not be reproduced or used without its express written permission. No permission is granted to reproduce any of the architectural works, including without limitation the construction of any building, in agreement or should be implied from delivery of preliminary drawings or executed construction drawings. Permission to construct the building depicted in executed construction drawings is expressly conditioned on the full and timely payment of all fees shown on the Humphreys & Partners Architects, L.P. and in the absence of any written agreement by the contract, is limited to a one-time use of the site subject to these plans.

**HUMPHREYS & PARTNERS ARCHITECTS / FLORIDA, L.L.C.**   
 511 EAST HONOLULU AVE. STE 300 WILMINGTON, FL 32791   
 3125 S. UNIVERSITY AVENUE, SUITE 1000 ORLANDO, FL 32809   
 100 W. JACKSON AVENUE, SUITE 1000 JACKSONVILLE, FL 32202   
 CERTIFICATE #BA 000027



PROJECT NUMBER:   
**BLDG TYPE 2 - EXTERIOR ELEVATIONS**   
 SHEET NO.   
**A-4.22**





Client No.	18	
Checked By	18	
Date Plotted	29 April 2022	
Rev Dates		
Issue For Pricing, Bidding		
Issue For Permit Application		
Issue For Construction		
Revisions		
No.	Date	Comments

© 2018 by Humphreys & Partners Architects / Florida LLC. All Rights Reserved.  
 The architectural works depicted herein are the sole property of Humphreys & Partners Architects, L.P. and may not be reproduced or used without its express written permission. No permission is granted to reproduce any of the architectural works, including without limitation the construction of any building, in agreement or should be implied from delivery of preliminary drawings or issued construction drawings. Permission to construct the building depicted in issued construction drawings is expressly conditioned on the bid and timely payment of all fees shown on the H&P ARCHITECTS L.P. FEE SCHEDULE. H&P ARCHITECTS L.P. and its affiliates shall not be held liable for any errors or omissions in any drawings or documents prepared by the architect, in whole or in part, in the absence of any written agreement by the client, in relation to a one-time use of the site subject to these plans.

**HUMPHREYS & PARTNERS ARCHITECTS / FLORIDA LLC**  
 511 EAST HONOLULU AVE. STE 300 WILMINGTON, FL 32791  
 DALLAS, TEXAS 75201  
 H&P ARCHITECTS L.P. 1000 N. WILSON AVENUE, SUITE 1000 CHICAGO, ILLINOIS 60610  
 H&P ARCHITECTS L.P. 1000 N. WILSON AVENUE, SUITE 1000 CHICAGO, ILLINOIS 60610  
 CERTIFICATE #BA 000027



**GENERAL BUILDING NOTES**

- PLEASE NOTE - BUILDING PLANS MAY DEPICT MIRROR IMAGE OF UNIT LAYOUTS DEPICTED IN A-8.0 DRAWINGS
- PROVIDE A BRICK FINISH AT ALL EXTERIOR SLOPED CONCRETE SURFACES
- WALKWAY CONCRETE SURFACES TO RECEIVE A LIGHT BRICK SLOPED FINISH. SLOPE AS INDICATED ON DWGS. CONDITIONED CONCRETE SURFACES TO RECEIVE EPICORITE TOPPING AND FLOOR FINISH SURFACE MATERIAL, PREFER TO INTERIOR SCHEDULE OF MATERIAL FOR CONCRETE FINISH
- FLOORS ADJACENT TO ALL ACCESSIBLE AND "CORRIDOR" UNITS ENTRANCES SHALL HAVE FLOOR SURFACES NOT TO EXCEED 1/8" SLOPE FOR A DISTANCE OF 60" PERPENDICULAR TO THE DOOR
- ACCESSIBLE THRESHOLDS SHALL BE PROVIDED AT ALL EXTERIOR AND BREEZEWAY DOORS ON AN ACCESSIBLE PATH. REFER TO SHEETS A1.03 AND 1.04.2.01 FOR TYPICAL DOOR THRESHOLD DETAILS
- NOTES, DIMENSIONS, SECTION TAGS AND DETAIL TAGS ARE INCLUDED ON THE ENLARGED A-8.0 SERIES BUILDING PLANS. REFER ALSO TO A-8.0 SHEETS A4.03 AND A-8.0 SHEETS FOR NOTES, DIMENSIONS AND DETAIL TAGS RELATED TO STAIRS, ELEVATORS, FISHPOOLS, AMENITY BUILDINGS OR SPACES
- EXTERIOR, CONDOOR, STAIRWELL AND TENANT SEPARATION WALL TYPES AREA SHOWN ON OVERALL OR ENLARGED A-8.0 SERIES BUILDING PLANS. FOR WALL TYPES WITH UNIT PERIMETER WALLS, PLEASE REFER TO UNIT SHEETS
- METER, RISER AND TELECOM ARE LOCATIONS ON THE BUILDING PLANS FOR REFERENCE ONLY. REFER TO CIVIL AND MEP AND TELECOM PLANS FOR THE ACTUAL METER AND EQUIPMENT SIZE AND LOCATION
- A MINIMUM RATED 1/2" FIRE EXTINGUISHER ARE TO BE LOCATED EVERY 10' IN CORRIDORS REFER TO A-8.0 SERIES PLANS FOR LOCATIONS. ONE FIRE EXTINGUISHER SHALL BE VISIBLE AT EACH ELEVATOR LOBBY
- A MINIMUM RATED 1/2" FIRE EXTINGUISHER ARE TO BE LOCATED EVERY 10' INTO EACH OPEN CORRIDOR. TERMINATE EXTERIOR FINISH MATERIAL AT NEAREST CORNER OR WALL BREAK AS INDICATED ON THE DRAWINGS
- FLOOR TRUSSES AND DECK SHALL SLOPE MINIMUM 1/8" - 1/4" PER FOOT TOWARDS EXTERIOR OPENINGS FOR A MINIMUM OF 20' OR AS INDICATED ON THE DRAWINGS
- EXTERIOR FINISHES SHALL CONTINUE A MINIMUM OF 20' INTO EACH OPEN CORRIDOR. TERMINATE EXTERIOR FINISH MATERIAL AT NEAREST CORNER OR WALL BREAK AS INDICATED ON THE DRAWINGS
- WALL CONTROL JOINTS SHALL BE SPACED IN OPTIMAL WALL SPACING EVERY 30' MAX HORIZONTAL SPACING. WALL CONTROL JOINTS ARE ALSO RECOMMENDED AT DOOR JAMBS, EXTERIOR FRESH AIR DOOR AND TO CEILING. CEILING SYSTEM BOARD CONTROL JOINTS SHALL BE RETIRED TO LIMIT THE CEILING AREA TO 1300 SF WALL AND 80' IN EITHER DIRECTION. CONTROL JOINTS SHOULD BE INSTALLED BEHIND THERE IS A CHANGE IN DIRECTION IN CEILING FRAMING, TURNING OR SPACE CONTROL JOINTS AT THE CEILING AND WALL PER THE MANUFACTURERS RECOMMENDED INSTALLATION GUIDELINES. CEILING AND WALL CONTROL JOINTS ARE TO ALIGN AT ALL INTERSECTIONS WHERE APPLICABLE TO FORM A CONTINUOUS CONTROL JOINT. ENSURE THAT CONTROL JOINTS ARE LOCATED AT STRUCTURAL CONSTRUCTION JOINTS AND AT THE TOP AND BOTTOM OF ALL EXTERIOR RAMPS
- WHERE AN ELEVATOR OR STAIR EXIT IS WITHIN 2' OF AN ACCIDENT CORNER OR OTHER POTENTIAL HAZARD PLACE POSITION A REFLECTING MIRROR TO ALLOW SOMEONE IN THE EXIT CORRIDOR TO OBSERVE IN THE MIRROR THE AREA AROUND THE CORNER OR WITHIN THE ALCOVE THAT IS ADJACENT TO THE CORRIDOR

**SYMBOL LEGEND - BUILDING PLANS**

EXTERIOR ELEVATION TAG	CLAU WALL
WALL SECTION TAG	1/2" FIRE BARRIER
DETAIL SECTION TAG	1/4" FIRE PARTITION AT UNIT SEPARATION
PARTITION WALL TAG	1/4" FIRE PARTITION AT CORRIDORS
MURROUN	ASSIGNED PROPERTY LINE
TYPE X AND VIN UNITS	1" OF BRICK STONE LOGGE
HEAVY AND LIGHT UNITS	UNIT TYPE
DOOR TAG SYMBOL	SHEET NUMBER
METER	UNIT NUMBER
FIRE EXTINGUISHER	ROOM NAME
	ROOM NUMBER
	FLOOR DROP
	FINISHED FLOOR
	ELEVATION REFER TO CIVIL
	ENTRANCE DOOR
	IMPROVING CLEARANCE
	FLOOR DRAIN LOCATION
	REF. STRUCT & MEP

- (C.H) - FIBER CEMENT LAP SIDING
- (C.H) - FACE BRICK
- (C.H) - CULTURED STONE
- (C.H) - (8"H) Trim
- (C.H) - (6"H) Trim
- (C.H) - (4"H) Trim
- (C.H) - BRICK HEADER
- (C.H) - BRICK SILL
- (C.H) - FACE BRICK WATERTABLE

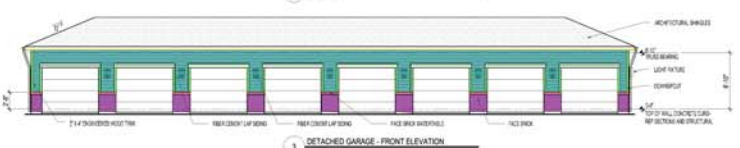
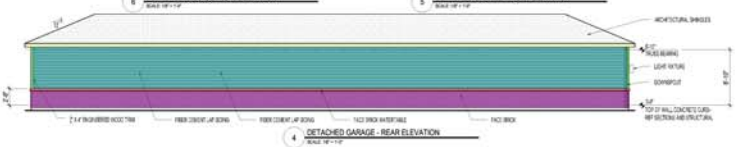
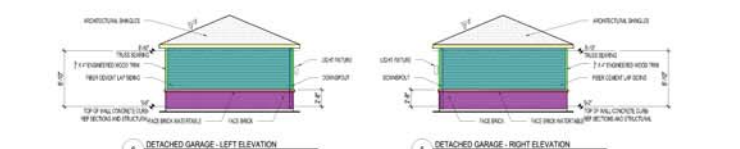
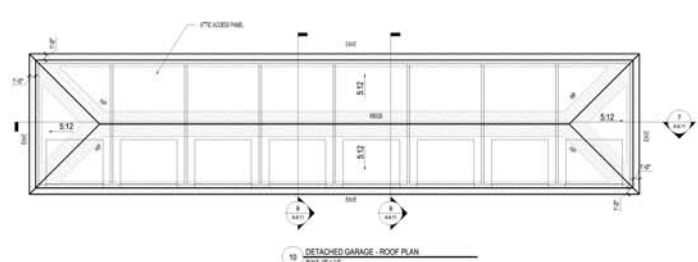
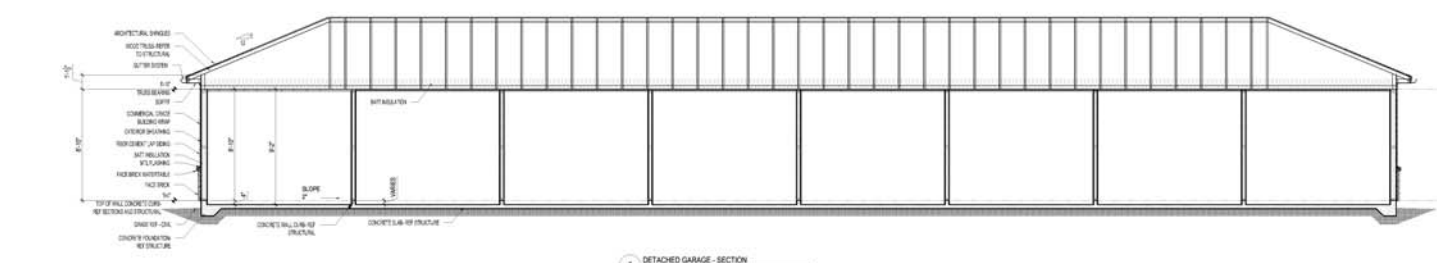
- 671.4 SQ FT
- 1,311.8 SQ FT
- 237.2 SQ FT
- 327.4 FT
- 264.1 FT
- 156.3 FT
- 65.1 FT
- 68.1 FT
- 48.2 FT







© 2018 by Humphreys & Partners Architects / Florida, L.L.C. All Rights Reserved.  
 The architectural works depicted herein are the sole property of Humphreys & Partners Architects, L.P. and may not be reproduced or used without its express written permission. No permission is granted or implied in any of the architectural works, including without limitation the construction of any building, its expansion or should be implied from delivery of preliminary drawings or issued construction drawings. Permission to construct the building depicted in issued construction drawings is expressly conditioned on the full and timely payment of all fees due to the firm. Humphreys & Partners Architects, L.P. and its members do not warrant, represent, or agree, in the contract, to a one-time use of the site indicated on these plans.



	(G.B) - FACE BRICK	426.5 SQ FT
	(G.B) - FIBER CEMENT LAP SIDING	1,161.3 SQ FT
	(G.B) - FACE BRICKWATERTABLE	159.6 FT
	(G.B) - (5/4"x4") FIBER CEMENT TRIM	114.0 FT
	(G.B) - (5/4"x6") FIBER CEMENT TRIM	238.6 FT
	(G.B) - GWB CEILING	1,780.3 SQ FT
	(G.B) - (5/4"x8") FIBER CEMENT TRIM	77.0 FT
	(G.B) - (2 HR) EXTERIOR GWB WALL (9'1"H)	230.4 FT
	(G.B) - (1 HR) INTERIOR GWB WALL (9'1"H)	136.2 FT

