

Mark	Equipment Description	Voltage System	Load	Load Units	Cord and Plug Rating	Rough-In Height
10267	UC REFRIG	120V, 1 Phase, 2 Wire	4.0	Amps	5-15P	26
10856	BREWER SERVER HEATER	120V, 1 Phase, 2 Wire	0.6	Amps	5-15P	26
10970	REFRIG REACH-IN 1 DOOR	120V, 1 Phase, 2 Wire	8.5	Amps	5-15P	84
13675	ONE DOOR FREEZER	120V, 1 Phase, 2 Wire	5.5	Amps	None	84
19742	MASTRINA ESPRESSO	208V, 1 Phase, 2 Wire	5950	VA (Watts)	6-50P	26
20011	NITRO DISPENSER	120V, 1 Phase, 2 Wire	10	Amps	5-15P	26
20032	OVEN	208V, 1 Phase, 2 Wire	30.0	Amps	6-30P	26
21215	FOOD CASE	208V, 1 Phase, 2 Wire	8.4	Amps	5-15P	26
21679	NITRO GENERATOR	120V, 1 Phase, 2 Wire	6.0	Amps	5-15P	26
22642	HOT WATER DISPENSER	120V, 1 Phase, 2 Wire	1500	VA (Watts)	5-20P	26

ELECTRICAL PLAN NOTES

- FOR EACH RELOCATED EQUIPMENT, MATCH RECEPTACLE NEMA CONFIGURATION AND WIRE GAUGE, EXTEND BRANCH CIRCUIT AS REQUIRED TO COMPLETE THE CONNECTION AND PROVIDE NEW GFCI CIRCUIT BREAKER. NUMBER SHALL MATCH EXISTING. DO NOT ABANDON EXISTING WORK. PROVIDE ADDITIONAL CASEWORK PENETRATIONS AS REQUIRED TO PROVIDE THE FINAL EQUIPMENT CONNECTION PER E501.
- RELOCATED 2 DR FREEZER.
- RELOCATED 1 DR FREEZER.
- RELOCATED 2 DR FRIDGE.
- RELOCATED 1 DR FRIDGE.

ELECTRICAL GENERAL NOTES

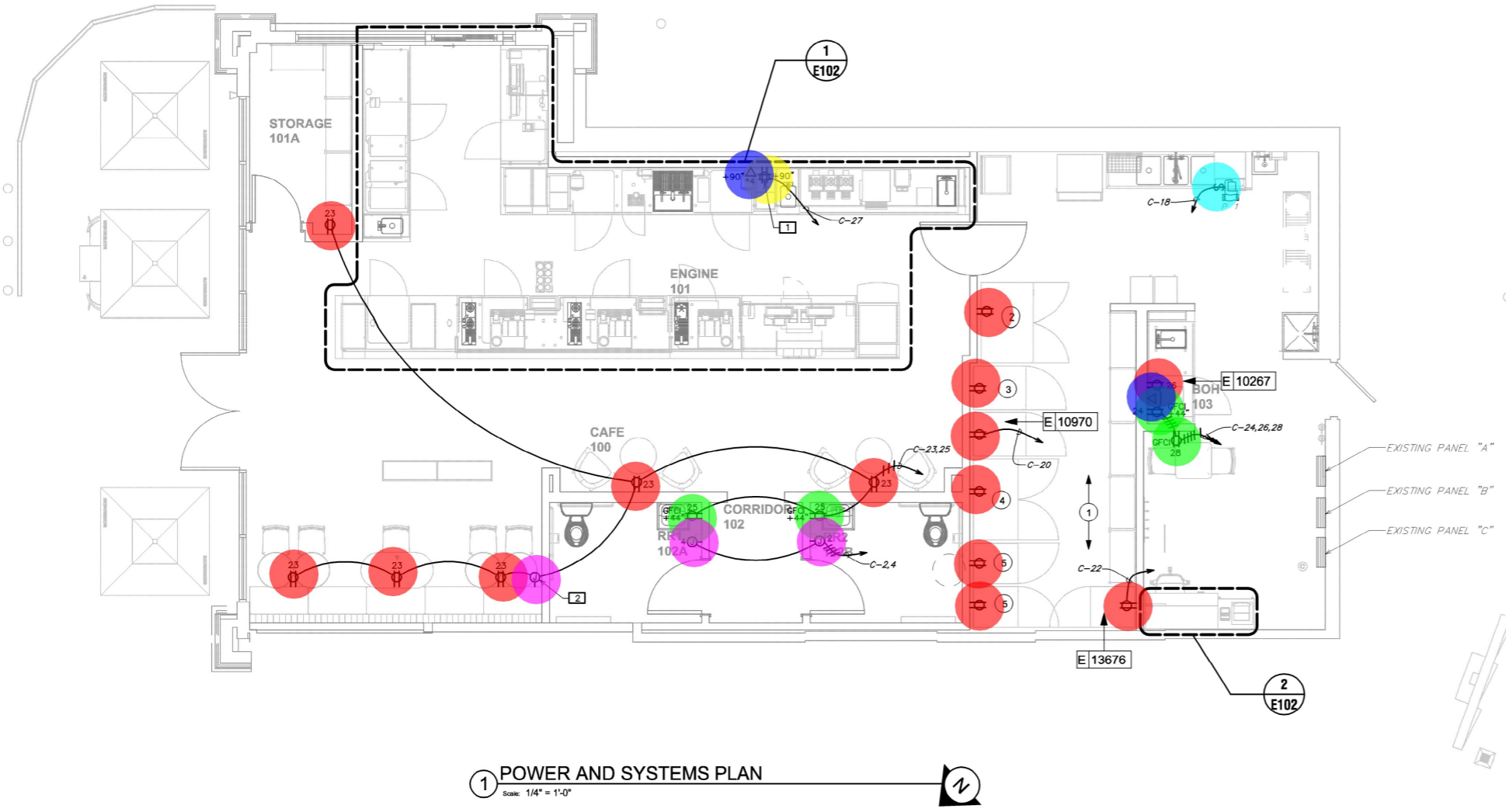
- ANY EXISTING CONDITIONS INDICATED IN THIS SET OF DRAWINGS ARE BASED ON INFORMATION PROVIDED BY OTHERS AND POSSIBLE LIMITED FIELD VERIFICATION. ADJUST FOR ACTUAL FIELD CONDITIONS AT NO ADDITIONAL EXPENSE TO THE OWNER.
- VISIT THE PROJECT SITE, REVIEW EXISTING CONDITIONS AGAINST THE CONTRACT DOCUMENTS, AND BECOME FAMILIAR WITH THE WORK PRIOR TO BIDDING AND START OF THE WORK. SIGNING THE CONTRACT IS AN ACKNOWLEDGEMENT THAT THE SITE VISIT HAS BEEN COMPLETED AND THE EXISTING CONDITIONS ARE ACCEPTED.
- DEMOLISH ANY EXISTING EQUIPMENT, DEVICES, AND LUMINAIRES AS INDICATED AND/OR AS REQUIRED TO ALLOW FOR INSTALLATION AND CONSTRUCTION OF THE NEW WORK. REMOVE ALL EQUIPMENT, DEVICES, LUMINAIRES, CONDUITS, SUPPORTS, HANGERS, ETC. THAT ARE NOT SHOWN AND ARE REQUIRED TO BE REMOVED IN ORDER TO COMPLETE THE NEW WORK.
- ELECTRICAL CIRCUITS THAT ARE TO BE REMOVED SHALL BE REMOVED IN THEIR ENTIRETY. CONDUCTORS SHALL BE REMOVED FROM THE ITEM TO BE DEMOLISHED TO THE SOURCE OVERCURRENT DEVICE. RACEWAYS WHICH ARE INSTALLED IN OR BELOW FLOORS OR WITHIN WALLS MAY BE ABANDONED, BUT ALL OVERHEAD OR EXPOSED RACEWAYS SHALL BE REMOVED. EXPOSED RACEWAYS TO BE ABANDONED SHALL BE REMOVED AND SHALL BE CUT OR CHISELED AT LEAST 2" INTO THE WALL OR FLOOR AND THE OPENING GROUDED SMOOTH.
- MAINTAIN CONTINUITY OF EXISTING CIRCUITS AS REQUIRED TO PROVIDE POWER TO REMAINING EQUIPMENT, DEVICES, AND LUMINAIRES THAT ARE NOT BEING REMOVED.
- ANY EXISTING FIRE ALARM SYSTEM SHALL REMAIN IN OPERATION THROUGHOUT CONSTRUCTION. AUTOMATIC SMOKE DETECTORS IN THE AREA OF CONSTRUCTION SHALL BE TEMPORARILY REPLACED WITH HEAT DETECTORS WHEN THE SPACE IS STAFFED BY THE CONTRACTOR IN ACCORDANCE WITH THE APPROVED FIRE SAFETY PROCEDURES OF THE OWNER AND THE LOCAL FIRE MARSHAL, BUT SHALL BE RELOCATED WHEN NOT OCCUPIED BY THE CONTRACTOR. AUTOMATIC SMOKE DETECTORS SHALL BE PROTECTED FROM DUST AND DIRT ACCUMULATION BY REMOVING THE DEVICE FROM ITS BASE DURING THOSE TIMES WHEN THE SYSTEM IS ALLOWED TO BE OUT OF OPERATION.
- WHERE THE MECHANICAL DESIGN UTILIZES A PLENUM RETURN AIR CEILING DESIGN, ALL EQUIPMENT AND MATERIALS INSTALLED WITHIN THE PLENUM RETURN CEILING MUST MEET THE FLAME SPREAD AND SMOKE DEVELOPED RATINGS OF 25/50 AND BE APPROVED FOR USE IN PLENUM RETURN CEILING. COORDINATE PLENUM CEILING LOCATIONS WITH THE MECHANICAL CONTRACTOR. LUMINAIRES THAT ARE MANUFACTURED WITH A METAL HOUSING MEET THIS REQUIREMENT AND ARE NOT REQUIRED TO BE PLENUM RATED UNLESS INDICATED OTHERWISE.
- COORDINATE ALL DEVICE LOCATIONS AND CIRCUIT ROUTING WITHIN ANY MILLWORK WITH MILLWORK VENDOR PRIOR TO ROUGH-IN.
- COORDINATE THE CONNECTIONS OF ALL EQUIPMENT PROVIDED BY OTHERS WITH THE CONTRACTOR PROVIDING THE EQUIPMENT PRIOR TO ROUGH-IN. THIS INCLUDES, BUT IS NOT LIMITED TO, MECHANICAL EQUIPMENT, KITCHEN EQUIPMENT, AUDIO/VISUAL EQUIPMENT, FIRE SUPPRESSION SYSTEM EQUIPMENT, FIRE ALARM EQUIPMENT, ETC. PROVIDE THE APPROPRIATE DISCONNECTING MEANS FOR, AND TO MAKE THE FINAL CONNECTION TO, ANY HARDWIRED EQUIPMENT. THE ELECTRICAL CONTRACTOR IS ALSO RESPONSIBLE TO PROVIDE AN APPROPRIATE CORD AND PLUG FOR ANY CORD-AND-PLUG CONNECTED EQUIPMENT THAT IS NOT EQUIPPED WITH AN INTEGRAL CORD AND PLUG.
- SEE PANEL SCHEDULES FOR INFORMATION ON CIRCUITS THAT ARE TO BE ROUTED THROUGH CONTACTORS OR RELAYS FOR CONTROL.
- PRESERVE THE FIRE RATING OF ANY FIRE-RATED CEILING ASSEMBLIES BY PROVIDING THE APPROPRIATE FIRE-RATED LUMINAIRE TENTS AS MANUFACTURED BY TENANT OR NELSON FIRESTOP OR BY BUILDING FIRE-RATED ENCLOSURES AROUND EACH LUMINAIRE THAT IS RECESSED INTO THE FIRE-RATED ASSEMBLY. COORDINATE FIRE-RATED CEILING ASSEMBLY LOCATIONS WITH THE ARCHITECTURAL DRAWINGS.
- ALL EQUIPMENT, DEVICES, AND LUMINAIRES SHALL BE SUITABLE FOR THE ENVIRONMENT IN WHICH THEY ARE INSTALLED. EQUIPMENT MOUNTED OUTDOORS SHALL BE NEMA 3R. DEVICES MOUNTED IN DAMP OR WET LOCATIONS SHALL BE WEATHERPROOF. RECEPTACLES RATED 15- OR 20-AMPS AND 120 VOLTS WHICH ARE LOCATED IN DAMP OR WET LOCATIONS SHALL BE GFCI PROTECTED AND EQUIPPED WITH A SUITABLE WEATHERPROOF COVERPLATE (WHILE-IN-USE IN WET LOCATIONS).
- ALL LUGS, TERMINALS, ETC. IN ELECTRICAL DISTRIBUTION EQUIPMENT SHALL BE LISTED FOR A MINIMUM OF 75 DEGREE C CONDUCTORS. TERMINATIONS LISTED FOR ONLY 60 DEGREE C CONDUCTORS ARE NOT PERMITTED.
- BRANCH CIRCUITS RATED AT 20 AMPS AT 120 VOLTS THAT ARE LONGER THAN 75 FEET SHALL BE #10 AWG MINIMUM TO OFFSET VOLTAGE DROP.
- BRANCH CIRCUITS RATED AT 20 AMPS AT 120 VOLTS THAT ARE LONGER THAN 150 FEET SHALL BE #8 AWG MINIMUM TO OFFSET VOLTAGE DROP.
- BRANCH CIRCUITS RATED AT 20 AMPS AT 277 VOLTS THAT ARE LONGER THAN 150 FEET SHALL BE #10 AWG MINIMUM TO OFFSET VOLTAGE DROP.
- CONDUCTORS #12 AWG AND SMALLER SHALL BE SOLID. CONDUCTORS #10 AWG AND LARGER ARE PERMITTED TO BE STRANDED.

ELECTRICAL KEYED NOTES

- PROVIDE POWER AND DATA DEVICES FOR DIGITAL MENU BOARDS. COORDINATE EXACT LOCATION WITH STARBUCKS PROJECT MANAGER PRIOR TO ROUGH-IN.
- PROVIDE FINAL CONNECTION TO USB COMBINATION DUPLEX RECEPTACLES IN ENDS OF BANQUETTE SEATING. WIRING SHALL BE ROUTED THROUGH ROUND BASE AS DESIGNATED BY THE MILLWORK MANUFACTURER. COORDINATE ALL REQUIREMENTS PRIOR TO ROUGH-IN.

- Wall Mounted Duplex Receptacle
- Wall Mounted GFCI Duplex Receptacle
- Wall Mounted Quadruplex Receptacle
- Wall Mounted Telephone Outlet (No Of Telephone Ports = 4)
- Wall Mounted Junction/Outlet Box
- Single Pole Switch

- 14.0 EA
- 4.0 EA
- 1.0 EA
- 2.0 EA
- 3.0 EA
- 1.0 EA



1 POWER AND SYSTEMS PLAN
Scale: 1/4" = 1'-0"

LEGEND
 — EXISTING
 — NEW WORK
 ⊕ NEW TO EXISTING CONNECTION



STARBUCKS
 2401 UTAH AVENUE SOUTH
 SEATTLE, WASHINGTON 98134
 (206) 318-1575

THESE DRAWINGS AND THE PROJECT MANUAL ARE CONFIDENTIAL AND SHALL REMAIN THE SOLE PROPERTY OF STARBUCKS CORPORATION, WHICH IS THE OWNER OF THE COPYRIGHT IN THIS WORK. THEY SHALL NOT BE REPRODUCED (IN WHOLE OR IN PART), SHARED WITH THIRD PARTIES OR USED IN ANY MANNER ON OTHER PROJECTS OR EXTENSIONS TO THIS PROJECT WITHOUT THE PRIOR WRITTEN CONSENT OF STARBUCKS CORPORATION. THESE DRAWINGS AND SPECIFICATIONS ARE INTENDED TO EXPRESS DESIGN INTENT FOR A PROTOTYPICAL STARBUCKS STORE (WHICH IS SUBJECT TO CHANGE AT ANY TIME) AND DO NOT REFLECT ACTUAL SITE CONDITIONS. NEITHER PARTY SHALL HAVE ANY OBLIGATION NOR LIABILITY TO THE OTHER (EXCEPT STATED ABOVE) UNTIL A WRITTEN AGREEMENT IS FULLY EXECUTED BY BOTH PARTIES.

STARBUCKS TEMPLATE VERSION: I2021.10.23

Gregory R Schnackel
 2023.07.20
 17:11:41
 -05'00'

COA#: 28403 07/20/23

THIS ITEM HAS BEEN ELECTRONICALLY SIGNED AND SEALED BY GREGORY R. SCHNACKEL, PE ON THE DATE AND/OR TIME STAMP SHOWN USING A DIGITAL SIGNATURE. PRINTED COPIES OF THIS DOCUMENT ARE NOT CONSIDERED SIGNED AND SEALED AND THE SIGNATURE MUST BE VERIFIED BY A 3RD PARTY CERTIFICATE AUTHORITY ON ANY ELECTRONIC COPY. FAC 61G15-23.004

PERMIT SET - FOR CONSTRUCTION USE

PROJECT NAME:
228 & I-10

PROJECT ADDRESS:
**9200 SR 228
 MACCLENNY, FL**

STORE #: 13607
 PROJECT #: 39927-077
 ISSUE DATE: 05-17-2023
 DESIGN MANAGER: MARTIN PEREZ
 PRODUCTION DESIGNER: GENSLER
 CHECKED BY: GRS

Revision Schedule			
Rev	Date	By	Description

SHEET TITLE:
POWER PLAN AND SCHEDULES
 SCALE: AS SHOWN

SHEET NUMBER:
E101



ELECTRICAL PLAN NOTES

- FOR EACH RELOCATED EQUIPMENT, MATCH RECEPTACLE NEMA CONFIGURATION AND WIRE GAUGE, AND EXTEND BRANCH CIRCUIT AS REQUIRED TO COMPLETE THE CONNECTION. PROVIDE GFCI RECEPTACLES IF NOT EXISTING. CIRCUIT NUMBER SHALL MATCH EXISTING. DO NOT ABANDON EXISTING WORK. PROVIDE ADDITIONAL CASEWORK PENETRATIONS AS REQUIRED TO PROVIDE THE FINAL EQUIPMENT CONNECTION PER E501.

ELECTRICAL GENERAL NOTES

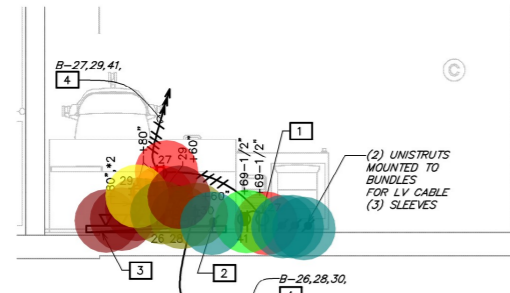
- ANY EXISTING CONDITIONS INDICATED IN THIS SET OF DRAWINGS ARE BASED ON INFORMATION PROVIDED BY OTHERS AND POSSIBLE LIMITED FIELD VERIFICATION. ADJUST FOR ACTUAL FIELD CONDITIONS AT NO ADDITIONAL EXPENSE TO THE OWNER.
- VISIT THE PROJECT SITE. REVIEW EXISTING CONDITIONS AGAINST THE CONTRACT DOCUMENTS, AND BECOME FAMILIAR WITH THE WORK PRIOR TO BIDDING AND START OF THE WORK.

- COORDINATE ALL DEVICE LOCATIONS AND CIRCUIT ROUTING WITHIN ANY MILLWORK WITH MILLWORK VENDOR PRIOR TO ROUGH-IN.

- COORDINATE THE CONNECTIONS OF ALL EQUIPMENT PROVIDED BY OTHERS WITH THE CONTRACTOR PROVIDING THE EQUIPMENT PRIOR TO ROUGH-IN. THIS INCLUDES, BUT IS NOT LIMITED TO, MECHANICAL EQUIPMENT, KITCHEN EQUIPMENT, AUDIO/VISUAL EQUIPMENT, FIRE SUPPRESSION SYSTEM EQUIPMENT, FIRE ALARM EQUIPMENT, ETC. PROVIDE THE APPROPRIATE DISCONNECTING MEANS FOR EACH TYPE OF EQUIPMENT. PROVIDE THE APPROPRIATE DISCONNECTING MEANS FOR EACH TYPE OF EQUIPMENT.

- Wall Mounted Duplex Receptacle
- Wall Mounted Telephone Outlet (No Of Telephone Ports = 4)
- Wall Mounted Telephone Outlet (No Of Telephone Ports = 2)
- Wall Mounted Quadruplex Receptacle
- Wall Mounted Special Receptacle (NEMA Configuration)
- Wall Mounted Dedicated Quadruplex Receptacle
- Wall Mounted Junction/Outlet Box
- 75"x64"x3/4" UL-Labeled Fire-Resistant Plywood W/ Ground Bar
- 2" EMT Conduit W/ Pull String
- Wall Mounted GFCI Duplex Receptacle
- (2) Unistruts Mounted To Bundles For LV Cable (3) Sleeves

- SEE PANEL SCHEDULES FOR INFORMATION ON CIRCUITS THROUGH CONTACTORS OR RELAYS FOR CONTROL.
- PRESERVE THE FIRE RATING OF ANY FIRE-RATED CEILING PROVIDING THE APPROPRIATE FIRE-RATED LUMINAIRE BY TENANT OR NELSON FIRESTOP OR BY BUILDING FIRESTOP AROUND EACH LUMINAIRE THAT IS RECEIVED INTO THE CEILING. COORDINATE FIRE-RATED CEILING ASSEMBLY LOCATIONS WITH ARCHITECTURAL DRAWINGS.
- ALL EQUIPMENT DEVICES AND LUMINAIRES SHALL BE SUPPLIED IN AN ENVIRONMENT IN WHICH THEY ARE INSTALLED. EQUIPMENT SHALL BE NEMA 3R DEVICES MOUNTED IN DAMP OR WET WEATHER-PROOF RECEPTACLES RATED 15- OR 20-AMPS LOCATED IN DAMP OR WET LOCATIONS SHALL BE GFCI PROTECTED WITH A SUITABLE WEATHERPROOF COVERPLATE (WHERE LOCATIONS).
- ALL LUGS, TERMINALS, ETC. IN ELECTRICAL DISTRIBUTION PANELS LISTED FOR A MINIMUM OF 75 DEGREE C CONDUCTORS. LISTED FOR ONLY 60 DEGREE C CONDUCTORS ARE NOT PERMITTED.
- BRANCH CIRCUITS RATED AT 20 AMPS AT 120 VOLTS THIN FEET SHALL BE #10 AWG MINIMUM TO OFFSET VOLTAGE DROP.
- BRANCH CIRCUITS RATED AT 30 AMPS AT 120 VOLTS THIN FEET SHALL BE #8 AWG MINIMUM TO OFFSET VOLTAGE DROP.
- BRANCH CIRCUITS RATED AT 30 AMPS AT 277 VOLTS THIN FEET SHALL BE #10 AWG MINIMUM TO OFFSET VOLTAGE DROP.
- CONDUCTORS #12 AWG AND SMALLER SHALL BE SOLID. CONDUCTORS #10 AWG AND LARGER ARE PERMITTED TO BE STRANDED.



ENLARGED MANAGER'S DESK POWER AND SYSTEMS PLAN
Scale: 1/2" = 1'-0"

ELECTRICAL KEYED NOTES

- ALL RECEPTACLES IN THIS AREA SHALL HAVE FACEPLATE GFCI PROTECTION.
- PROVIDE ONE 2" EMT CONDUIT WITH PULL STRING FROM LANDLORD'S TELEPHONE DISTRIBUTION LOCATION FOR TELEPHONE SERVICE. COORDINATE LOCATION OF LANDLORD'S TELEPHONE DISTRIBUTION AND EXACT CONDUIT ROUTING WITH LANDLORD PRIOR TO ROUGH-IN.
- PROVIDE A 75" x 64" x 3/4" UL-LABELED FIRE-RESISTANT PLYWOOD BACKBOARD FOR TELECOMMUNICATION EQUIPMENT. PROVIDE GROUND BAR MOUNTED ON BACKBOARD WITH EQUIPMENT GROUNDING CONDUCTOR CONNECTED TO POWER SYSTEM'S GROUNDING ELECTRODE SYSTEM. SEE DETAIL 2/E601 FOR ADDITIONAL INFORMATION REGARDING GROUND BAR.
- CONNECT TO CIRCUIT BREAKER(S) INDICATED, ADJUST LOCATION WITHIN PANELBOARD IF THERE IS AN EXISTING LOAD TO REMAIN AT CIRCUIT LOCATION(S) INDICATED.



ENLARGED ENGINE POWER AND SYSTEMS PLAN
Scale: 1/2" = 1'-0"



STARBUCKS
2401 UTAH AVENUE SOUTH
SEATTLE, WASHINGTON 98134
(206) 318-1575

THESE DRAWINGS AND THE PROJECT MANUAL ARE CONFIDENTIAL AND SHALL REMAIN THE SOLE PROPERTY OF STARBUCKS CORPORATION, WHICH IS THE OWNER OF THE COPYRIGHT IN THIS WORK. THEY SHALL NOT BE REPRODUCED (IN WHOLE OR IN PART), SHARED WITH THIRD PARTIES OR USED IN ANY MANNER ON OTHER PROJECTS OR EXTENSIONS TO THIS PROJECT WITHOUT THE PRIOR WRITTEN CONSENT OF STARBUCKS CORPORATION. THESE DRAWINGS AND SPECIFICATIONS ARE INTENDED TO EXPRESS DESIGN INTENT FOR A PROTOTYPICAL STARBUCKS STORE (WHICH IS SUBJECT TO CHANGE AT ANY TIME) AND DO NOT REFLECT ACTUAL SITE CONDITIONS. NEITHER PARTY SHALL HAVE ANY OBLIGATION NOR LIABILITY TO THE OTHER (EXCEPT STATED ABOVE) UNTIL A WRITTEN AGREEMENT IS FULLY EXECUTED BY BOTH PARTIES.

STARBUCKS TEMPLATE VERSION: 12021.10.23

Gregory R Schnackel
2023.07.20
17:11:59
-05'00'

COA#: 28403 07/20/23

THIS ITEM HAS BEEN ELECTRONICALLY SIGNED AND SEALED BY GREGORY R. SCHNACKEL, PE ON THE DATE AND/OR TIME STAMP SHOWN USING A DIGITAL SIGNATURE. PRINTED COPIES OF THIS DOCUMENT ARE NOT CONSIDERED SIGNED AND SEALED AND THE SIGNATURE MUST BE VERIFIED BY A 3RD PARTY CERTIFICATE AUTHORITY ON ANY ELECTRONIC COPY. FAC 61G15-23.004

PERMIT SET - FOR CONSTRUCTION USE

PROJECT NAME:
228 & I-10

PROJECT ADDRESS:
**9200 SR 228
MACCLENNY, FL**

STORE #: 13607
PROJECT #: 39927-077
ISSUE DATE: 05-17-2023
DESIGN MANAGER: MARTIN PEREZ
PRODUCTION DESIGNER: GENSLER
CHECKED BY: GRS

Revision Schedule			
Rev	Date	By	Description

SHEET TITLE:
ENLARGED POWER AND SYSTEMS PLANS
SCALE: AS SHOWN

SHEET NUMBER:
E102



LUMINAIRE SCHEDULE										
MARK	MANUFACTURER	CATALOG NUMBER	VOLTAGE	WATTS	MOUNTING	LAMP QUANTITY	LAMP DESCRIPTION	LAMP TYPE	SELECTED BY OTHERS?	REMARKS
21777	BRUCK	350440-13LM-27K-90-20-120-ELV-BK-ECOBK	120	15 W	TRACK	-	INTEGRAL	LED	YES	PHASE DIMMING

- 15 Watt Track Mounted LED (Bruck :350440-13LM-27K-90-20-120-ELV-BK-ECOBK)
- 15 Watt Track Mounted LED (Bruck :350440-13LM-30K-90-38-120-ELV-SNOOTBK-ECOBK)
- 36 Watt Recessed LED (ILP : PAN24-36WLED-U-35)
- 36 Watt Recessed LED (ILP : PAN24-36WLED-U-35 W/ Factory Installed 12W LED Battery Backup)
- 12 Watt Recessed LED (Alphabet : NU-RA-SW-13LM-30K-90-D50-UNV-DIM10-NC-WH-WH)
- 12 Watt Recessed LED (Alphabet : NU-RA-SW-13LM-30K-90-D50-UNV-DIM10-NC-WH-WH W/ Emergency Battery Backup)
- 3 Amp. Track Mounted Current Limiting Breaker
- Re-Install Existing Switchbank
- Lighting Control Switchbank
- Occupancy Sensor Switch

- INTEGRATED LED LUMINAIRE RATED GREATER THAN 1000 LUMENS: 20 WATT, MINIMUM, OUTPUT.
 C. ANY PROPOSED SUBSTITUTIONS FOR LUMINAIRE THAT ARE SELECTED BY OTHERS REQUIRE THE APPROVAL OF THE SPECIFYING ENTITY.

ELECTRICAL GENERAL NOTES

- ANY EXISTING CONDITIONS INDICATED IN THIS SET OF DRAWINGS ARE BASED ON INFORMATION PROVIDED BY OTHERS AND POSSIBLE LIMITED FIELD VERIFICATION. ADJUST FOR ACTUAL FIELD CONDITIONS AT NO ADDITIONAL EXPENSE TO THE OWNER.
- VISIT THE PROJECT SITE, REVIEW EXISTING CONDITIONS AGAINST THE CONTRACT DOCUMENTS, AND BECOME FAMILIAR WITH THE WORK PRIOR TO BIDDING AND START OF THE WORK. SIGNING THE CONTRACT IS AN ACKNOWLEDGEMENT THAT THE SITE VISIT HAS BEEN COMPLETED AND THE EXISTING CONDITIONS ARE ACCEPTED.
- DEMOLISH ANY EXISTING EQUIPMENT, DEVICES, AND LUMINAIRE AS INDICATED UNLESS OTHERWISE NOTED. REMOVE ALL EQUIPMENT, DEVICES, LUMINAIRE, SUPPORTS, HANGERS, ETC. THAT ARE NOT SHOWN AND REMOVE IN ORDER TO COMPLETE THE NEW WORK.
- WHERE THE MECHANICAL DESIGN UTILIZES A PLENUM RETURN CEILING, ALL EQUIPMENT AND MATERIALS INSTALLED WITHIN THE PLENUM MUST MEET THE FLAME SPREAD AND SMOKE DEVELOPMENT RATING AND BE APPROVED FOR USE IN PLENUM RETURN CEILING APPLICATIONS. CEILING LOCATIONS WITH THE MECHANICAL CONTRACTOR SHALL BE MANUFACTURED WITH A METAL HOUSING MEET THIS REQUIREMENT TO BE PLENUM RATED UNLESS OTHERWISE NOTED.
- SEE PANEL SCHEDULES FOR INFORMATION ON CIRCUIT BREAKERS THROUGH CONTACTORS OR RELAYS FOR CONTROL.
- PRESERVE THE FIRE RATING OF ANY FIRE-RATED CEILING PROVIDING THE APPROPRIATE FIRE-RATED LUMINAIRE TYPE BY TENANT OR NELSON FIRESTOP OR BY BUILDING FIRESTOP AROUND EACH LUMINAIRE THAT IS RECESSED INTO THE COORDINATE FIRE-RATED CEILING ASSEMBLY LOCATIONS SHOWN ON ARCHITECTURAL DRAWINGS.
- CIRCUITS SERVING EMERGENCY LIGHTING EQUIPMENT SHALL NOT SHARE A NEUTRAL OR GROUND WITH ANY OTHER CIRCUIT. PROVIDE A SEPARATE CIRCUIT FOR EVERY CIRCUIT THAT SERVES EMERGENCY LIGHTING.
- ALTHOUGH NOT SPECIFICALLY SHOWN, THE ELECTRICAL CONTRACTOR SHALL PROVIDE ALL REQUIRED LOW VOLTAGE WIRING AND DATA CABLING, PER THE MANUFACTURER'S RECOMMENDATIONS, FOR A COMPLETE, FUNCTIONAL LIGHTING CONTROL SYSTEM.
- ALTHOUGH NOT SPECIFICALLY SHOWN, THE ELECTRICAL CONTRACTOR SHALL PROVIDE ALL REQUIRED WIRING AND DATA CABLING, INCLUDING ALL 0-10V CONTROL WIRING WHERE APPLICABLE, PER THE MANUFACTURER'S RECOMMENDATIONS FOR A COMPLETE, FUNCTIONAL DIMMING SYSTEM.
- LUMINAIRE MARKED "EX" ARE EXISTING LUMINAIRE THAT ARE TO REMAIN IN PLACE. ALL EXISTING LUMINAIRE WITHIN THE LIMITS OF CONSTRUCTION SHALL BE REPAIRED TO A LIKE-NEW CONDITION, THOROUGHLY CLEANED, AND RELAMPED. ANY EXISTING LUMINAIRE THAT ARE DAMAGED BEYOND REPAIR SHALL BE REPLACED WITH AN IDENTICAL LUMINAIRE.

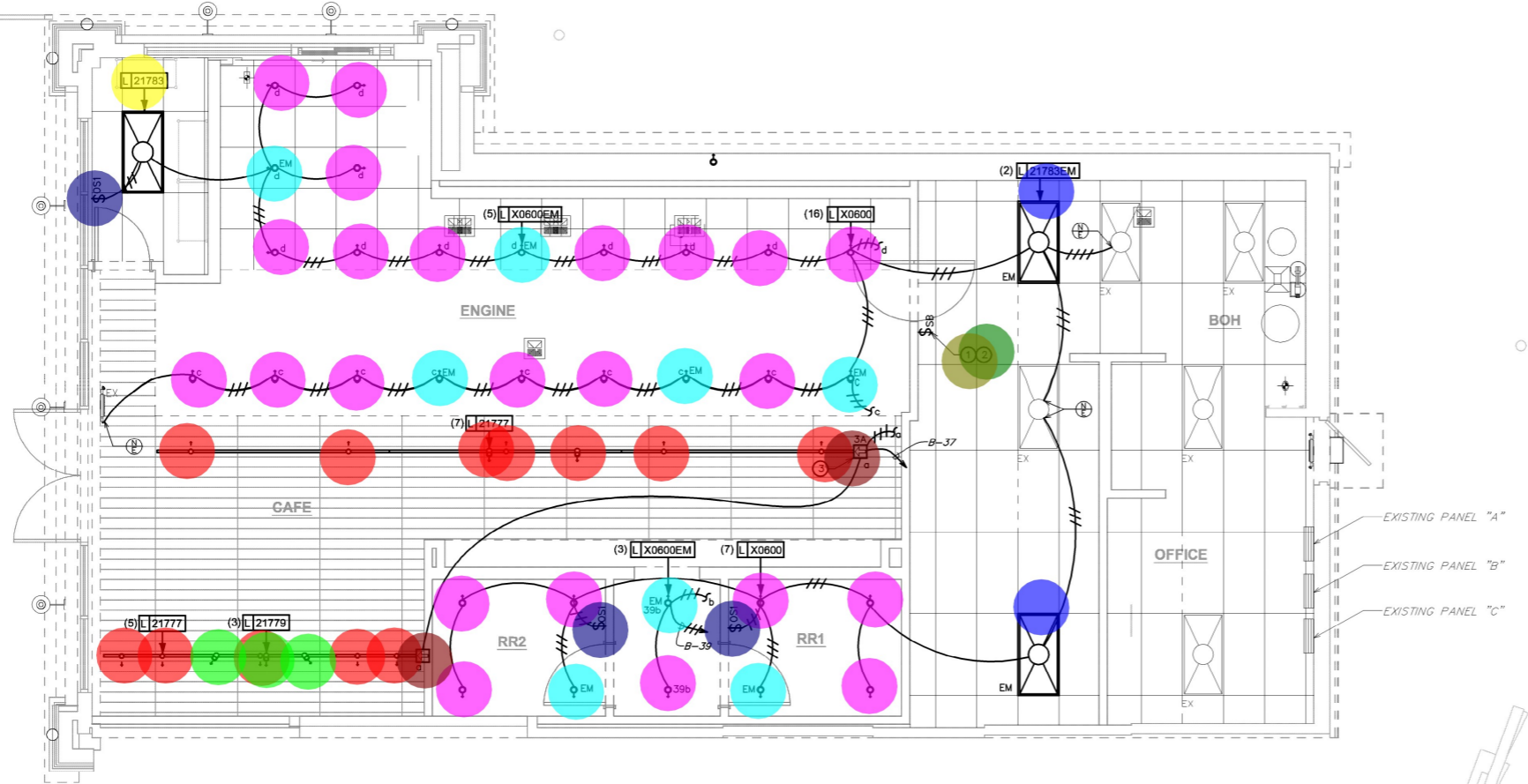
12.0 EA	RED	BE
3.0 EA	GREEN	RETURN OF 25/50 PLENUM RATED ARE NOT
1.0 EA	YELLOW	ROUTED
2.0 EA	PURPLE	ROUTED
23.0 EA	PINK	ROUTED
8.0 EA	CYAN	ROUTED
2.0 EA	BROWN	ROUTED
1.0 EA	TEAL	ROUTED
1.0 EA	OLIVE	ROUTED
3.0 EA	BLUE	ROUTED

ELECTRICAL PLAN NOTES

- PROVIDE LIGHTING CONTROL SWITCHBANK(S). SEE SWITCHBANK SCHEDULE(S) FOR ADDITIONAL INFORMATION. LOWERCASE LETTERS ADJACENT TO LUMINAIRE ON PLANS CORRESPOND TO THE ASSOCIATED SWITCH ON THE SWITCHBANK SCHEDULE. CONFIRM SWITCHBANK(S) WILL FIT WITHIN THIS DESIGNATED AREA AND STACK MULTIPLE SWITCHBANKS, WITH FEWER GANGS, AT THIS LOCATION IF A SINGLE SWITCHBANK WILL NOT FIT WITHIN THIS DESIGNATED AREA.
- EXISTING SWITCHES TO BE REUSED FOR LIGHTING TO REMAIN AND SECURITY TOUCHSCREEN TO RELOCATE TO THIS LOCATION. EXTEND EXISTING CIRCUITING / CABLING AS NECESSARY TO MAINTAIN CONTINUITY OF EXISTING CONTROLS TO REMAIN.
- PROVIDE TRACK MOUNTED CURRENT LIMITING BREAKER. THE NUMBER INDICATES THE AMPERE RATING OF THE BREAKER.

SWITCHBANK "SB1" SCHEDULE		
SWITCH TAG	ZONE DESCRIPTION	CONTROL TYPE
a	TRACK LIGHTS	LINE VOLTAGE DIMMER
b	CAFE DOWNLIGHT	LINE VOLTAGE DIMMER
c	FRONT ENGINE	LINE VOLTAGE DIMMER
d	REAR ENGINE	LINE VOLTAGE DIMMER
e	WORKROOM	EXISTING

GENERAL NOTES:
 A. PROVIDE BOX PARTITIONS BETWEEN CONTROLS OF DIFFERING VOLTAGES.



1 LIGHTING PLAN
 Scale: 1/4" = 1'-0"

LEGEND

- EXISTING
- NEW WORK
- ⊕ NEW TO EXISTING CONNECTION



STARBUCKS
 2401 UTAH AVENUE SOUTH
 SEATTLE, WASHINGTON 98134
 (206) 318-1575

THESE DRAWINGS AND THE PROJECT MANUAL ARE CONFIDENTIAL AND SHALL REMAIN THE SOLE PROPERTY OF STARBUCKS CORPORATION, WHICH IS THE OWNER OF THE COPYRIGHT IN THIS WORK. THEY SHALL NOT BE REPRODUCED (IN WHOLE OR IN PART), SHARED WITH THIRD PARTIES OR USED IN ANY MANNER ON OTHER PROJECTS OR EXTENSIONS TO THIS PROJECT WITHOUT THE PRIOR WRITTEN CONSENT OF STARBUCKS CORPORATION. THESE DRAWINGS AND SPECIFICATIONS ARE INTENDED TO EXPRESS DESIGN INTENT FOR A PROTOTYPICAL STARBUCKS STORE (WHICH IS SUBJECT TO CHANGE AT ANY TIME) AND DO NOT REFLECT ACTUAL SITE CONDITIONS. NEITHER PARTY SHALL HAVE ANY OBLIGATION NOR LIABILITY TO THE OTHER (EXCEPT STATED ABOVE) UNTIL A WRITTEN AGREEMENT IS FULLY EXECUTED BY BOTH PARTIES.

STARBUCKS TEMPLATE VERSION: 12021.10.23

Gregory R Schnackel
 2023.07.20
 17:12:18 -05'00'

COA#: 28403 07/20/23

THIS ITEM HAS BEEN ELECTRONICALLY SIGNED AND SEALED BY GREGORY R. SCHNACKEL, PE ON THE DATE AND/OR TIME STAMP SHOWN USING A DIGITAL SIGNATURE. PRINTED COPIES OF THIS DOCUMENT ARE NOT CONSIDERED SIGNED AND SEALED AND THE SIGNATURE MUST BE VERIFIED BY A 3RD PARTY CERTIFICATE AUTHORITY ON ANY ELECTRONIC COPY. FAC 61615-23.004

PERMIT SET - FOR CONSTRUCTION USE

PROJECT NAME:
228 & I-10

PROJECT ADDRESS:
**9200 SR 228
 MACCLENNY, FL**

STORE #: 13607
 PROJECT #: 39927-077
 ISSUE DATE: 05-17-2023
 DESIGN MANAGER: MARTIN PEREZ
 PRODUCTION DESIGNER: GENSLER
 CHECKED BY: GRS

Revision Schedule			
Rev	Date	By	Description

SHEET TITLE:
LIGHTING PLAN

SCALE: AS SHOWN

SHEET NUMBER:
E103

