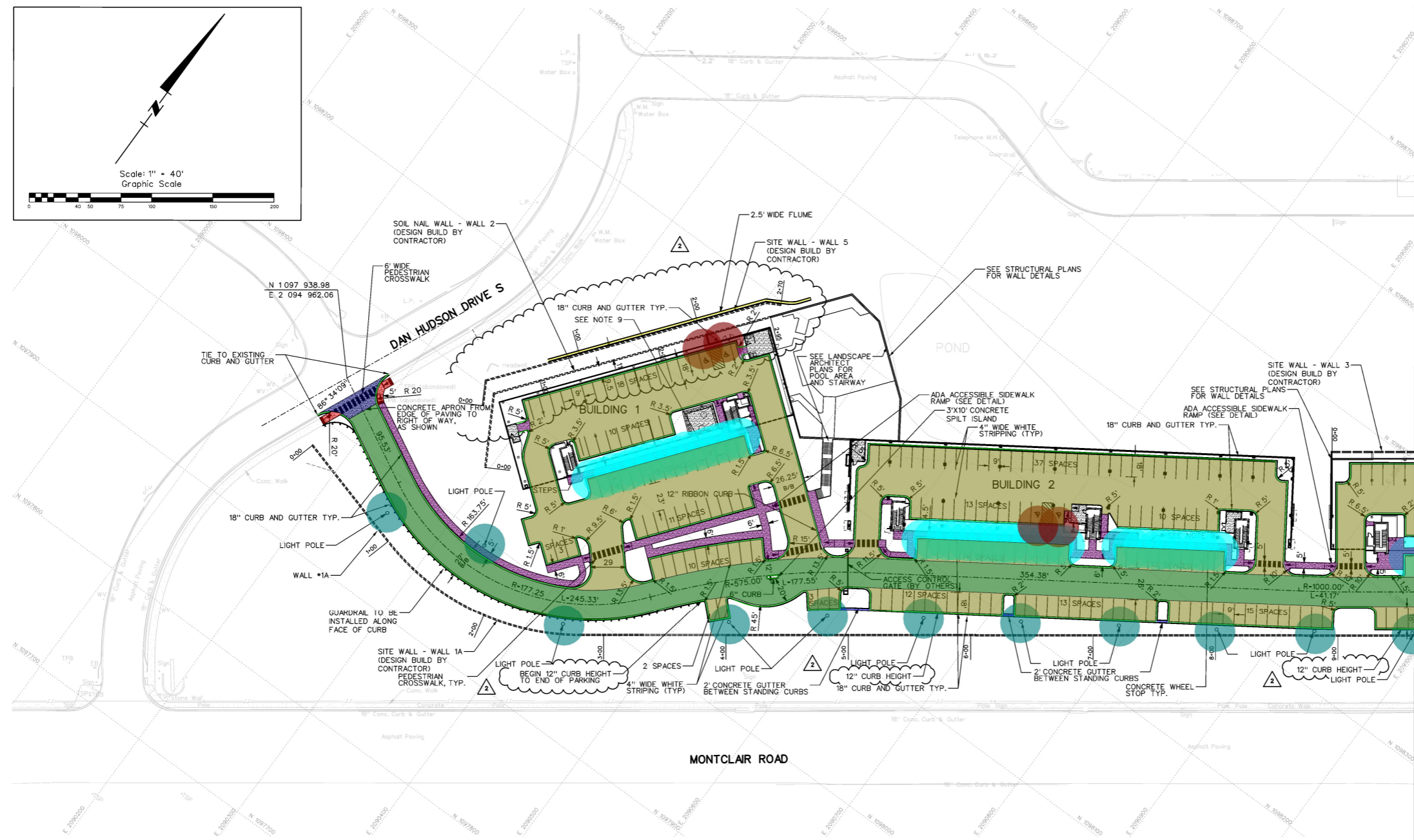


PARKING TABLE		
136 - 1 BED UNITS	1 SPACE/UNIT	136 SPACES
141 - 2+ BED UNITS	1.5 SPACES/UNIT	212 SPACES
		TOTAL: 348 REQUIRED
ACTUAL SURFACE PARKING:		198 SPACES
ACTUAL GARAGE PARKING:		180 SPACES
		TOTAL: 378 SPACES



MATCH LINE 2 OF 2

APPROX TERRACE APARTMENTS

NOTES:

- ALL STREET AND SIDEWALK REPAIR WORK TO BE ADA COMPLIANT.
- TRAFFIC CONTROL IS TO BE PROVIDED ON A DESIGN-BUILD BASIS BY THE CONTRACTOR TO SUPPORT HIS CONSTRUCTION PLAN AND SEQUENCING. THE CONTRACTOR SHALL PREPARE A TRAFFIC CONTROL PLAN ADDRESSING DETAILS OF ACCESS, SITE SAFETY AND CONTROL, TRAFFIC CONTROL, ETC. FOR REVIEW AND COMMENTS BY THE OWNER. THE CONTRACTOR SHALL OBTAIN ALL REQUIRED PERMITS, PAY ALL FEES AND COMPLY WITH ALL LOCAL, COUNTY, STATE, AND FEDERAL LAWS AND REGULATIONS THAT GOVERN THIS PROJECT.
- THE IMPLEMENTATION OF THIS PLAN, INCLUDING THE DETAILS OF ACCESS, SITE SAFETY AND CONTROL, TRAFFIC CONTROL, AND FIELD MODIFICATIONS ARE SOLELY THE RESPONSIBILITY OF THE CONTRACTOR.
- APPROPRIATE TRAFFIC CONTROL MEASURES (IN ACCORDANCE WITH THE MUTCD) TO BE IMPLEMENTED AND MAINTAINED AT ALL TIMES.
- ALL DIMENSIONS SHOWN TO BACK OF CURB UNLESS NOTED OTHERWISE.
- SEE LANDSCAPE PLANS FOR ADDITIONAL INFORMATION
- FALL PROTECTION TO BE INCORPORATED INTO DESIGN BUILD WALL SYSTEMS. ALL RAILING TO BE APPROVED BY OWNER AND DESIGN TEAM.
- SEE DRAWINGS C6 FOR BUILDING COORDINATES
- ALL SIDEWALKS TO BE MINIMUM OF 5' WIDE (IN SOME CASES 4'-6" PLUS 6" TOP OF CURB)

LEGEND:

	LIGHT DUTY PAVING
	HEAVY DUTY PAVING
	CONCRETE PAVING

	Light duty pavement	61,325.6 SQ FT
	Heavy duty pavement	23,063.2 SQ FT
	Concrete driveway	602.8 SQ FT
	Concrete sidewalk	8,282.1 SQ FT
	ADA Sidewalk	225.9 SQ FT
	(18") Concrete curb & gutter	4,630.3 FT
	30" Concrete flume	221.9 FT
	24" Concrete gutter	44.4 FT
	Light pole footing	11.0
	Concrete wheelstop	40.0
	ADA Signage footing	4.0

UNDERGROUND UTILITIES SHOWN ON THIS MAP ARE FROM LOCAL UTILITY COMPANY RECORDS AND SHOULD BE FIELD VERIFIED IN THE FIELD PRIOR TO CONSTRUCTION.
JOB SAFETY IS NOT THE RESPONSIBILITY OF THE ENGINEER. THE CONTRACTOR IS RESPONSIBLE FOR CONSTRUCTION SITE SAFETY.

ARCHITECT OF RECORD:
WILLIAMS BLACKSTOCK ARCHITECTS
2204 FIRST AVENUE SOUTH, SUITE 200
BIRMINGHAM, ALABAMA 35233

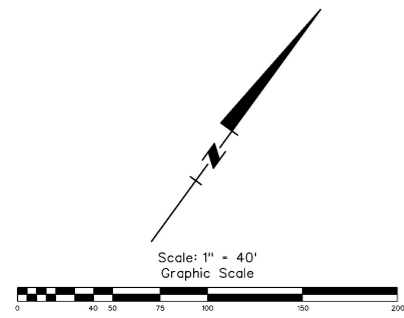
ISSUE DATE:
07-30-2021

NO.	DATE	DESCRIPTION
1	12/8/2021	CR-NO. 2

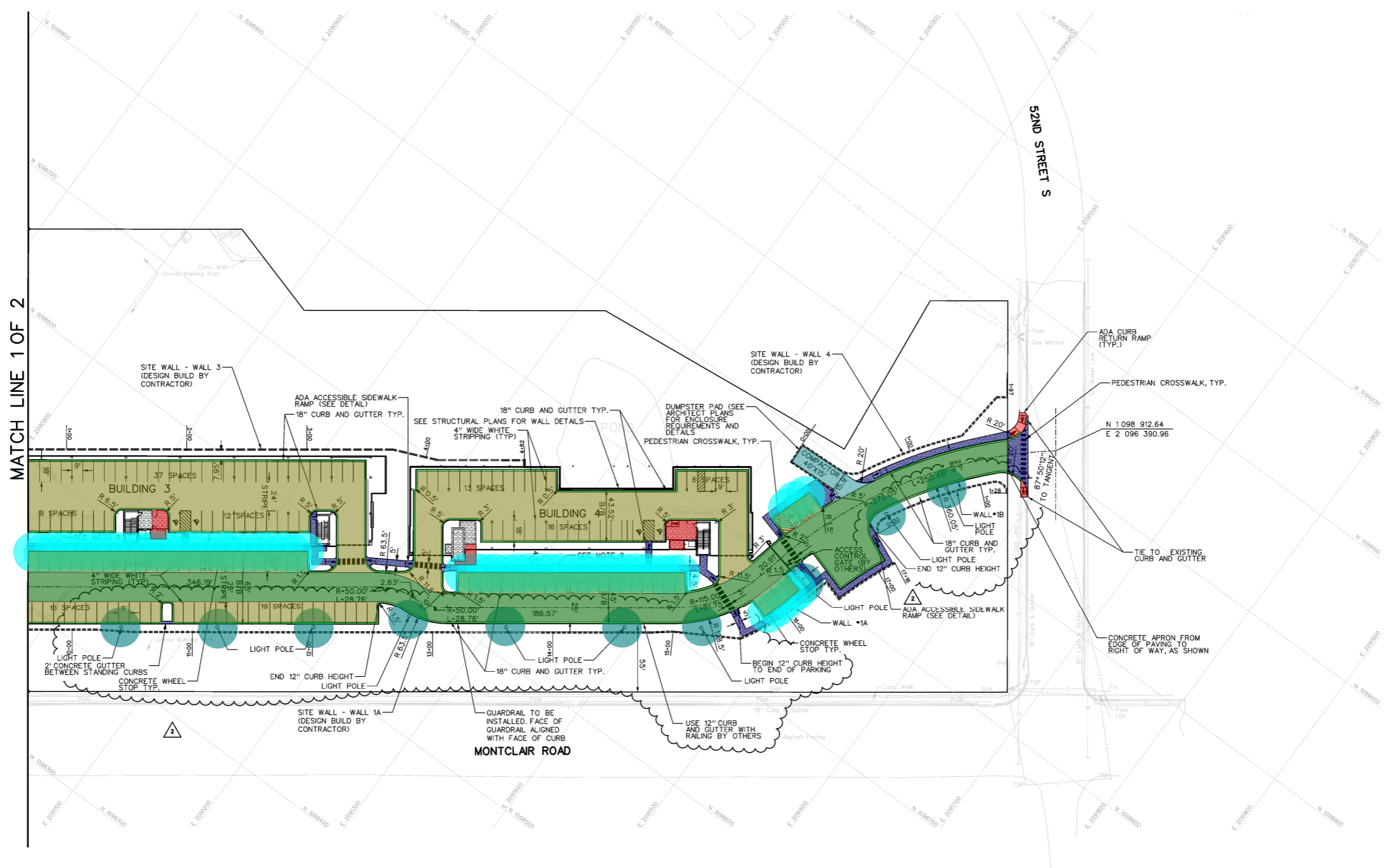
PROJECT NUMBER:
20-047

DRAWING TITLE:
LAYOUT PLAN

SHEET NUMBER:
C7



PARKING TABLE		
136 - 1 BED UNITS	1 SPACE/UNIT	136 SPACES
141 - 2+ BED UNITS	1.5 SPACES/UNIT	212 SPACES
		TOTAL: 348 REQUIRED
ACTUAL SURFACE PARKING:		198 SPACES
ACTUAL GARAGE PARKING:		180 SPACES
		TOTAL: 378 SPACES



- NOTES:**
- ALL STREET AND SIDEWALK REPAIR WORK TO BE ADA COMPLIANT.
 - TRAFFIC CONTROL IS TO BE PROVIDED ON A DESIGN-BUILD BASIS BY THE CONTRACTOR TO SUPPORT HIS CONSTRUCTION PLAN AND SEQUENCING. THE CONTRACTOR SHALL PREPARE A TRAFFIC CONTROL PLAN ADDRESSING DETAILS OF ACCESS, SITE SAFETY AND CONTROL, TRAFFIC CONTROL, ETC. FOR REVIEW AND COMMENTS BY THE OWNER. THE CONTRACTOR SHALL OBTAIN ALL REQUIRED PERMITS, PAY ALL FEES AND COMPLY WITH ALL LOCAL, COUNTY, STATE, AND FEDERAL LAWS AND REGULATIONS THAT GOVERN THIS PROJECT.
 - THE IMPLEMENTATION OF THIS PLAN, INCLUDING THE DETAILS OF ACCESS, SITE SAFETY AND CONTROL, TRAFFIC CONTROL, AND FIELD MODIFICATIONS ARE SOLELY THE RESPONSIBILITY OF THE CONTRACTOR.
 - APPROPRIATE TRAFFIC CONTROL MEASURES (IN ACCORDANCE WITH THE MUTCD) TO BE IMPLEMENTED AND MAINTAINED AT ALL TIMES.
 - ALL DIMENSIONS SHOWN TO BACK OF CURB UNLESS NOTED OTHERWISE.
 - SEE LANDSCAPE PLANS FOR ADDITIONAL INFORMATION
 - FALL PROTECTION TO BE INCORPORATED INTO DESIGN BUILD WALL SYSTEMS. ALL RAILING TO BE APPROVED BY OWNER AND DESIGN TEAM.
 - SEE DRAWINGS C6 FOR BUILDING COORDINATES
 - ALL SIDEWALKS TO BE MINIMUM OF 5' WIDE (IN SOME CASES 4'-6" PLUS 6" TOP OF CURB)

LEGEND:

[Light Gray Box]	LIGHT DUTY PAVING
[Dark Gray Box]	HEAVY DUTY PAVING
[Hatched Box]	CONCRETE PAVING

[Light Gray Box]	Light duty pavement	43,895.6 SQ FT
[Dark Gray Box]	Heavy duty pavement	22,207.8 SQ FT
[Hatched Box]	Concrete sidewalk	5,505.6 SQ FT
[Light Blue Box]	ADA Sidewalk	211.4 SQ FT
[Green Box]	Concrete driveway	619.7 SQ FT
[Dark Green Box]	Concrete paving	1,028.0 SQ FT
[Blue Box]	Dumpstur enclosure pad	959.3 SQ FT
[Blue Box]	24" Concrete gutter	10.2 FT
[Blue Box]	(18") Concrete curb & gutter	3,370.0 FT
[Red Circle]	Light pole footing	10.0
[Red Circle]	Concrete wheelstop	54.0

UNDERGROUND UTILITIES SHOWN ON THIS MAP ARE FROM LOCAL UTILITY COMPANY RECORDS AND SHOULD BE FIELD VERIFIED IN THE FIELD PRIOR TO CONSTRUCTION.

JOB SAFETY IS NOT THE RESPONSIBILITY OF THE ENGINEER. THE CONTRACTOR IS RESPONSIBLE FOR CONSTRUCTION SITE SAFETY.

ARCHITECT OF RECORD:
WILLIAMS BLACKSTOCK ARCHITECTS
2204 FIRST AVENUE SOUTH, SUITE 200
BIRMINGHAM, ALABAMA 35233

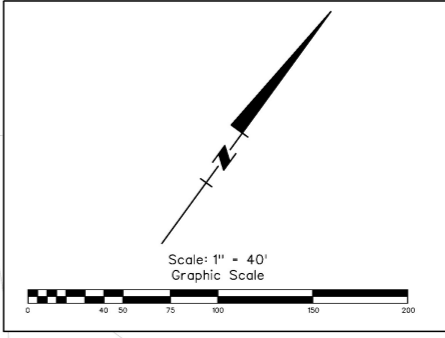
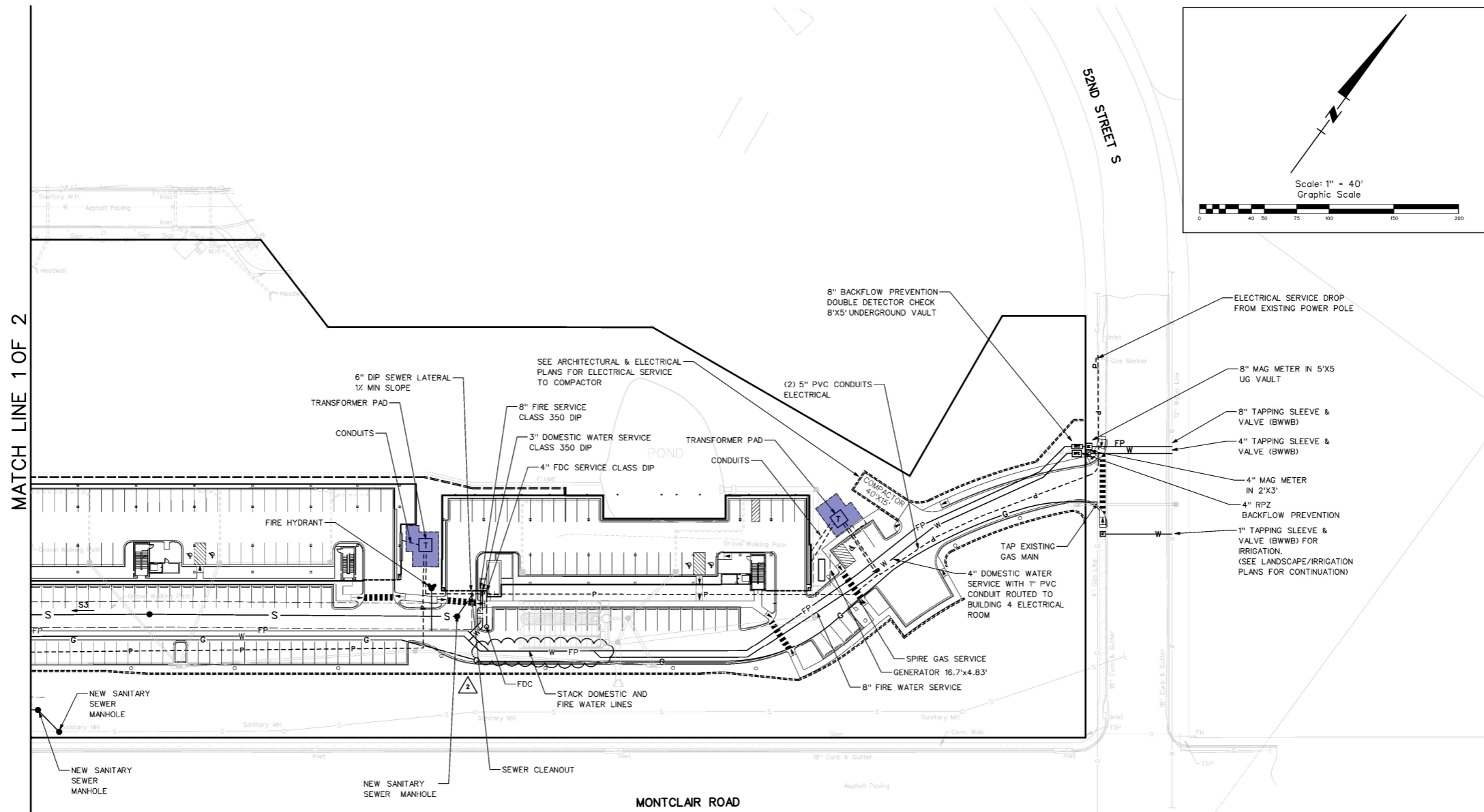
ISSUE DATE:
07-30-2021

NO.	DATE	DESCRIPTION
1	12/20/2021	CONNO. 2

PROJECT NUMBER:
20-047

DRAWING TITLE:
LAYOUT PLAN

SHEET NUMBER:
C8



UTILITY CONTACTS
JEFFERSON COUNTY ENVIRONMENTAL SERVICE
CONTACT: BEN PATE
TEL: 205-521-7515

BIRMINGHAM WATER WORKS
CONTACT: DOUG STOCKHAM
TEL: (205) 244-4186

ALABAMA POWER COMPANY
CONTACT: MEGAN WARE
TEL: 205-438-1290

SPIRE ENERGY COMPANY
CONTACT: JESSIE GILLILAND
TEL: 205-326-8138

AT&T-BELLSOUTH TELECOMMUNICATIONS,LLC
CONTACT: JESHUA K. DEEMER
TEL: 205-258-4188

Transformer pad 1,280.5 SQ FT

BWWB STANDARD NOTES:

1. ALL FIRE SERVICES: BIRMINGHAM WATER BOARD WILL INSTALL THE TAPPING SLEEVE AND VALVE. A DEVELOPER INSTALL CONTRACTOR MUST BE HIRED TO COMPLETE ALL DIGGING AND INSTALLATION UP TO AND INCLUDING THE MAGNETIC FLOW METER VAULT.
2. BWWB WILL CONDUCT FULL INSTALL ON 4" AND LARGER DOMESTIC SERVICES.
3. DOMESTIC SERVICE AND/OR FIRE SERVICE BACKFLOW PREVENTER ASSEMBLY MUST BE INSTALLED OUTSIDE THE FACILITY. THE BACKFLOW DEPARTMENT WILL REVIEW AND EVALUATE SPECIAL CONDITIONS ON A CASE BY CASE BASIS.
4. THE CUSTOMER WILL BE RESPONSIBLE FOR KILLING ALL EXISTING AND TEMPORARY SERVICES TO BE PROPERLY SIMULTANEOUSLY WITH THE INSTALLATION OF ANY NEW SERVICE CONNECTIONS BY WATER BOARD. ANY EXISTING AND TEMPORARY SERVICES MUST BE KILLED AT THE MAIN AND INSPECTED BY BWWB PERSONNEL BEFORE THE NEW SERVICE(S) WILL BE ACTIVATED. ANY EXISTING SERVICE TO BE REUSED BY THE CUSTOMER MUST BE APPROVED BY THE WATER BOARD'S METER DEPARTMENT AND BROUGHT UP TO CURRENT WATER BOARD STANDARD. NO EXCEPTIONS.

5. THE DOMESTIC SERVICE AND/OR FIRE SERVICE BACKFLOW PREVENTER ASSEMBLY MUST NOT BE INSTALLED UNTIL MAGNETIC FLOW METER ASSEMBLY INSTALLATION IS COMPLETE. THE CUSTOMER WILL BE REQUIRED TO REMOVE ANY BACKFLOW PREVENTER ASSEMBLY IN CONFLICT WITH THE INSTALLATION OF A MAGNETIC FLOW METER ASSEMBLY (NO EXCEPTIONS). ANY COST ASSOCIATED WITH THE REMOVAL AND REINSTALLATION OF A BACKFLOW PREVENTER ASSEMBLY WILL BE INCURRED BY THE CUSTOMER AND NOT THE WATER BOARD.

6. THE FIRE SERVICE AND/OR DOMESTIC SERVICE MAGNETIC FLOW METER VAULTS MUST HAVE LOCATION AND ELEVATION STAKES MARKED ON SITE BEFORE BWWB WILL MAKE THE TAP AND SET THE VAULT(S). THE OWNER OR HIS/HER REPRESENTATIVE MUST SIGN THE BWWB FOR THAT STATES THE VAULTS ARE SET AT THE PROPER LOCATION AND ELEVATION. ANY COST ASSOCIATED WITH THE REMOVAL AND REINSTALLATION OF A MAGNETIC FLOW METER VAULT WILL BE INCURRED BY THE CUSTOMER AND NOT THE WATER BOARD.

7. BWWB WILL NOT MAKE ANY FIELD CHANGES ONCE THE DRAWING HAS BEEN APPROVED BY BWWB PERSONNEL. IF A FIELD CHANGE IS REQUIRED YOU MUST SUBMIT A NEW DRAWING TO THE APPROPRIATE PROJECT COORDINATOR IN SYSTEM DEVELOPMENT VIA EMAIL AND RESCHEDULE YOUR TAP. NO EXCEPTIONS.

SANITARY SEWER SYSTEM NOTES:

1. ALL SANITARY SEWER SHALL BE CONSTRUCTED PER THE REQUIREMENTS OF JEFFERSON COUNTY ENVIRONMENTAL SERVICES DEPARTMENT.
2. COORDINATE ALL WORK WITH PLUMBING ENGINEERING DRAWINGS.

PRIMARY ELECTRICAL DISTRIBUTION SYSTEM NOTES:

1. CONTRACTOR TO COORDINATE WITH ELECTRICAL PLAN FOR ELECTRICAL SERVICE.

GENERAL NOTES:

1. SEE PLUMBING/LANDSCAPE PLANS AND COORDINATE WITH LANDSCAPE ARCH FOR ANY REQUIRED SLEEVE LOCATIONS.
2. SEE ELECTRICAL PLANS FOR CONNECTIONS TO LIGHT POLES AND CONTROL GATES.

BUILDING 1

WATER SERVICE REQUIREMENTS
FIRE SPRINKLER DEMAND: 1950 gpm, 20 psi
FIRE DEPARTMENT DEMAND: 550 gpm, ___ psi
DOMESTIC DEMAND: 135.78 gpm

BUILDING 2

WATER SERVICE REQUIREMENTS
FIRE SPRINKLER DEMAND: 2575 gpm, 20 psi
FIRE DEPARTMENT DEMAND: 550 gpm, ___ psi
DOMESTIC DEMAND: 183.00 gpm

BUILDING 3

WATER SERVICE REQUIREMENTS
FIRE SPRINKLER DEMAND: 2575 gpm, 20 psi
FIRE DEPARTMENT DEMAND: 550 gpm, ___ psi
DOMESTIC DEMAND: 190.67 gpm

BUILDING 4

WATER SERVICE REQUIREMENTS
FIRE SPRINKLER DEMAND: 2250 gpm, 20 psi
FIRE DEPARTMENT DEMAND: 550 gpm, ___ psi
DOMESTIC DEMAND: 163.67 gpm

UNDERGROUND UTILITIES SHOWN ON THIS MAP ARE FROM LOCAL UTILITY COMPANY RECORDS AND SHOULD BE FIELD VERIFIED IN THE FIELD PRIOR TO CONSTRUCTION.

JOB SAFETY IS NOT THE RESPONSIBILITY OF THE ENGINEER. THE CONTRACTOR IS RESPONSIBLE FOR CONSTRUCTION SITE SAFETY.

KEY PLAN:

ARCHITECT OF RECORD:
WILLIAMS BLACKSTOCK ARCHITECTS
2204 FIRST AVENUE SOUTH, SUITE 300
BIRMINGHAM, ALABAMA 35233

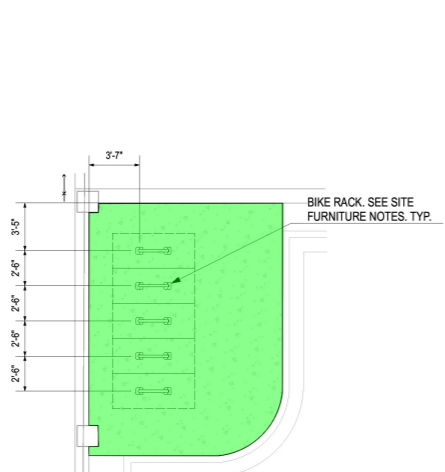
ISSUE DATE:
07-30-2021

NO.	DATE	DESCRIPTION
1	12/8/2021	CBNO 2

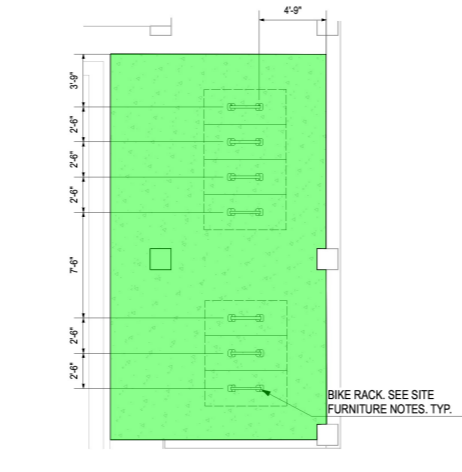
PROJECT NUMBER:
20-047

DRAWING TITLE:
UTILITY PLAN

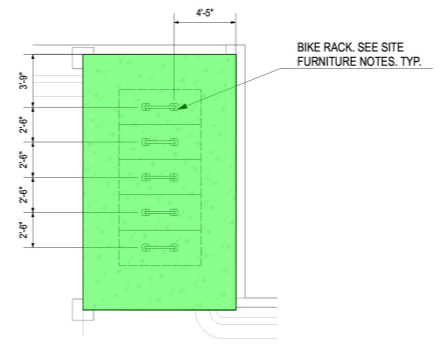
SHEET NUMBER:
C18



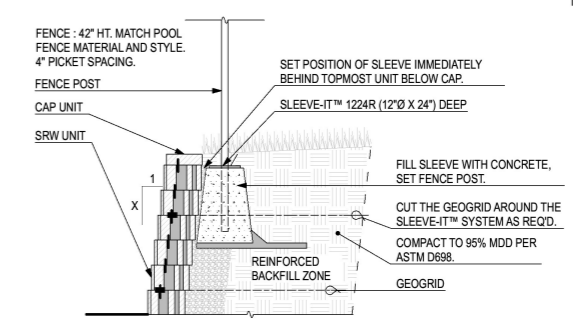
2 BLDG 3 BIKE AREA 1
Scale: 3/16" = 1'-0"



3 BLDG 3 BIKE AREA 2
Scale: 3/16" = 1'-0"



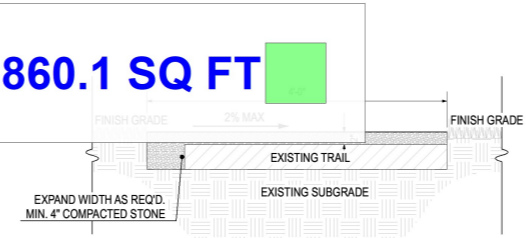
4 BLDG 4 BIKE AREA 1
Scale: 3/16" = 1'-0"



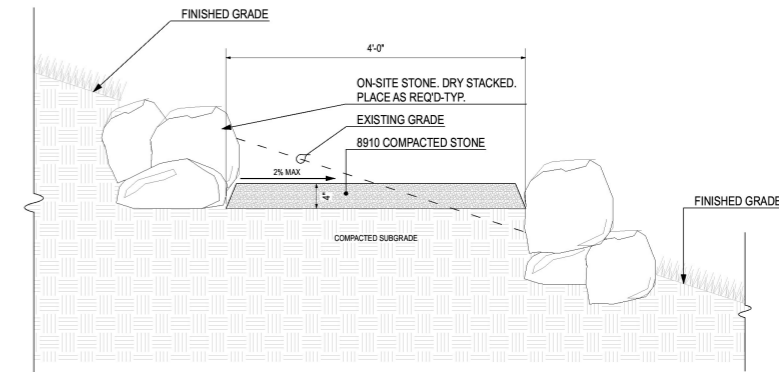
5 FENCE ABOVE SEGMENTAL WALL
Scale: 1/2" = 1'-0"

4" Concrete paving @ bike area 860.1 SQ FT

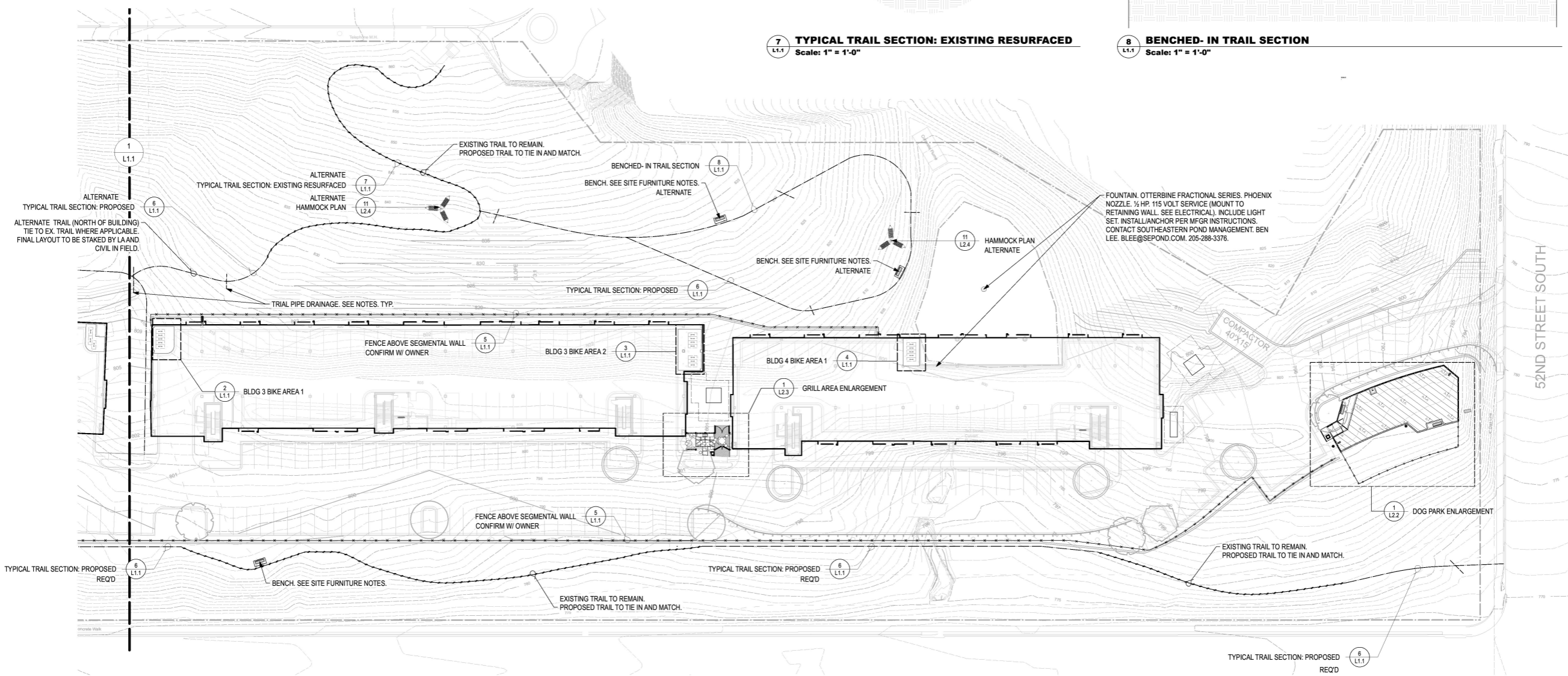
6 TYPICAL TRAIL SECTION: PROPOSED
Scale: 1" = 1'-0"



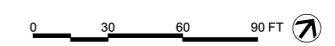
7 TYPICAL TRAIL SECTION: EXISTING RESURFACED
Scale: 1" = 1'-0"



8 BENCHED-IN TRAIL SECTION
Scale: 1" = 1'-0"



1 LAYOUT AND MATERIALS PLAN
Scale: 1" = 30'-0"



KEY PLAN:

ARCHITECT OF RECORD:
WILLIAMS BLACKSTOCK ARCHITECTS
2204 FIRST AVENUE SOUTH, SUITE 200
BIRMINGHAM, ALABAMA 35233

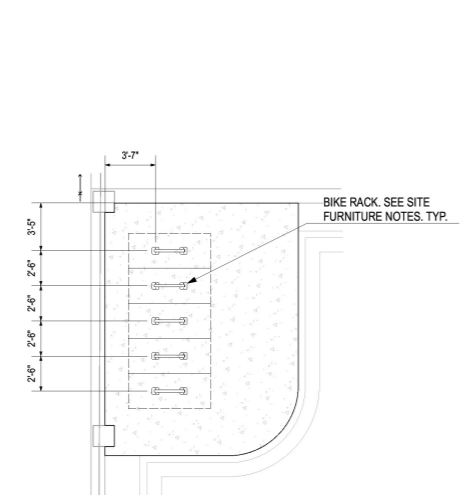
ISSUE DATE:
07-30-2021

REVISIONS:		
NO.	DATE	DESCRIPTION

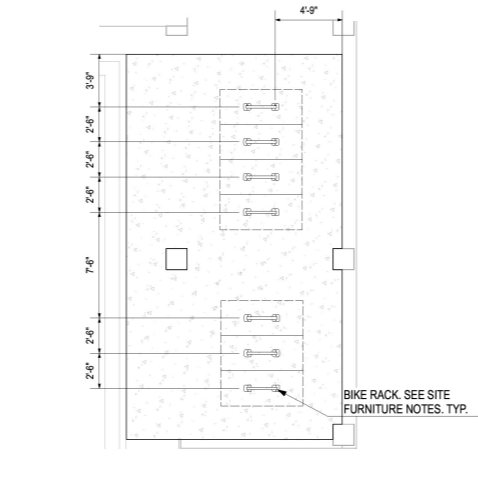
PROJECT NUMBER:
20-047

DRAWING TITLE:
LAYOUT AND MATERIALS PLAN

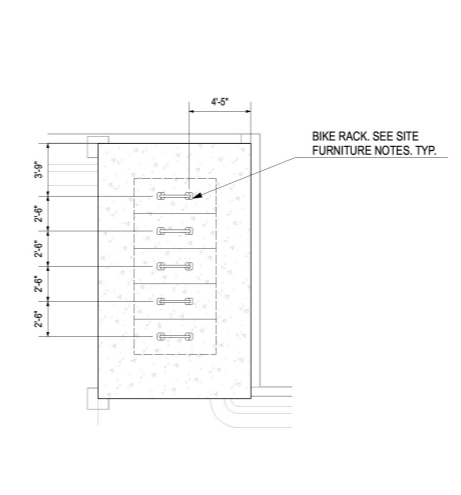
SHEET NUMBER:
L1.1



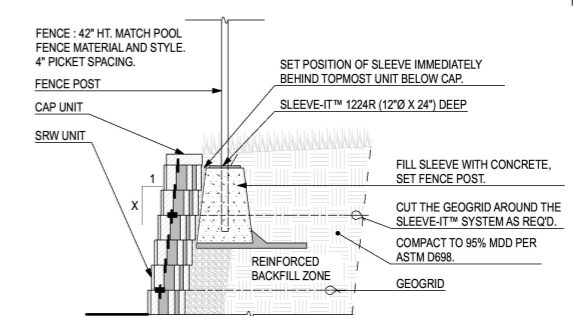
2 BLDG 3 BIKE AREA 1
Scale: 3/16" = 1'-0"



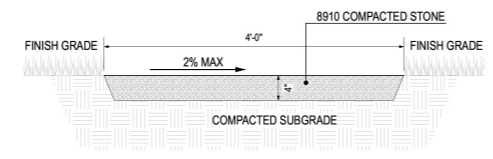
3 BLDG 3 BIKE AREA 2
Scale: 3/16" = 1'-0"



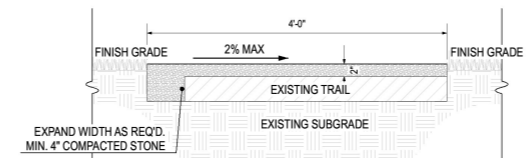
4 BLDG 4 BIKE AREA 1
Scale: 3/16" = 1'-0"



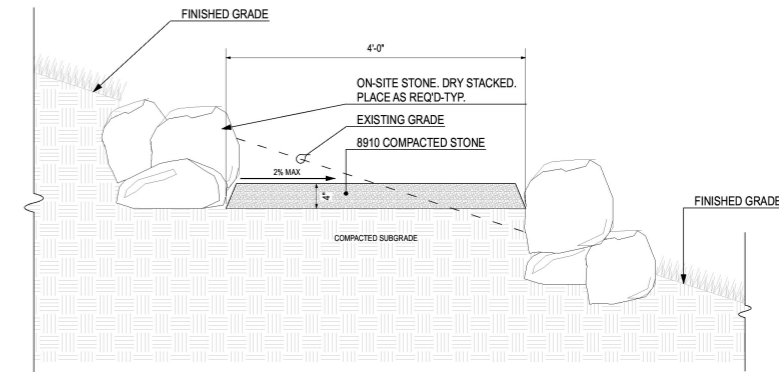
5 FENCE ABOVE SEGMENTAL WALL
Scale: 1/2" = 1'-0"



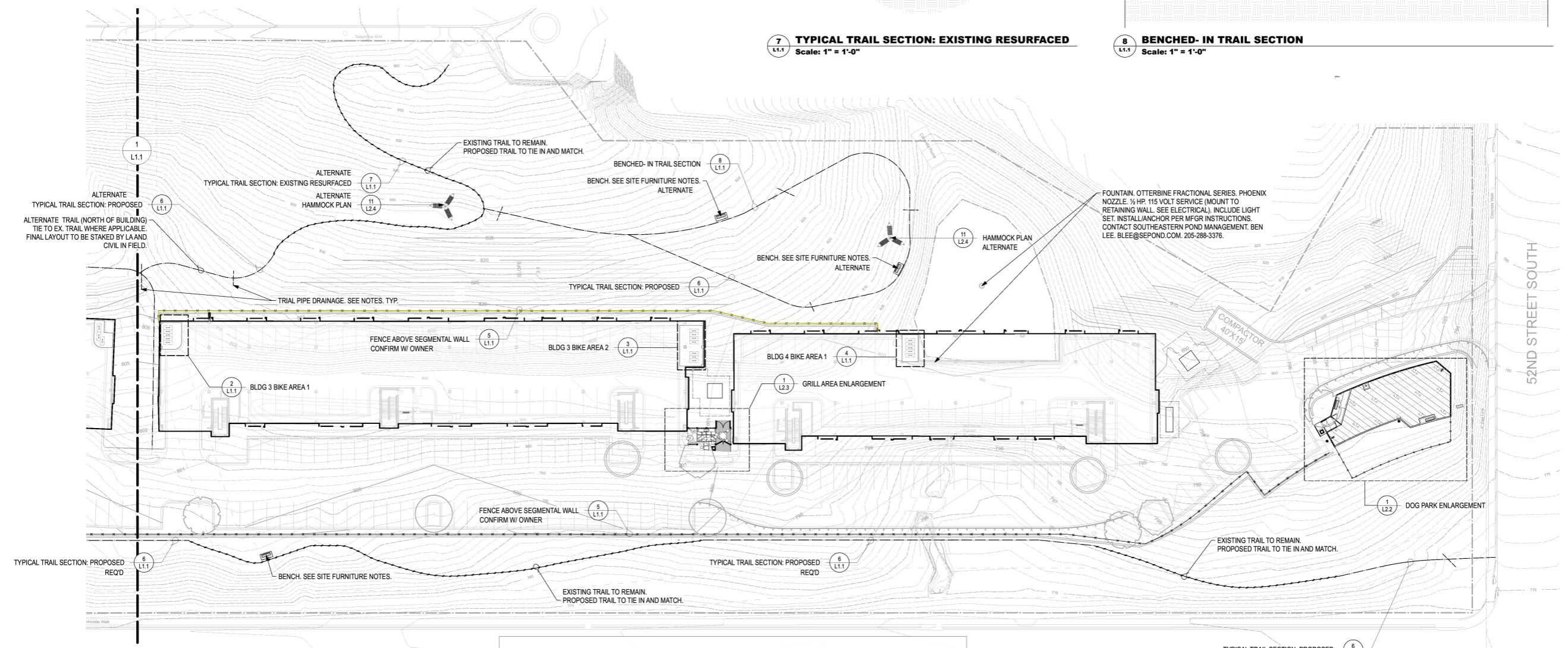
6 TYPICAL TRAIL SECTION: PROPOSED
Scale: 1" = 1'-0"



7 TYPICAL TRAIL SECTION: EXISTING RESURFACED
Scale: 1" = 1'-0"

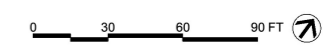


8 BENCHED-IN TRAIL SECTION
Scale: 1" = 1'-0"



1 LAYOUT AND MATERIALS PLAN
Scale: 1" = 30'-0"

RCC Footing for fe... 498.5 FT



KEY PLAN:

ARCHITECT OF RECORD:
WILLIAMS BLACKSTOCK ARCHITECTS
2204 FIRST AVENUE SOUTH, SUITE 200
BIRMINGHAM, ALABAMA 35233

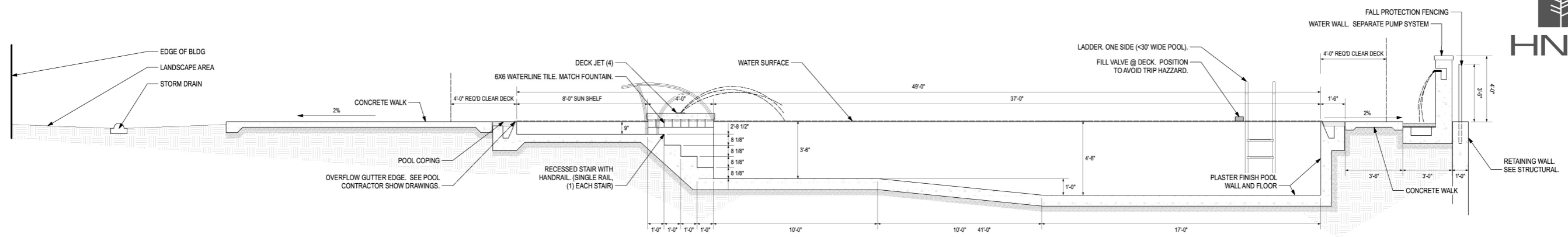
ISSUE DATE:
07-30-2021

REVISIONS:		
NO.	DATE	DESCRIPTION

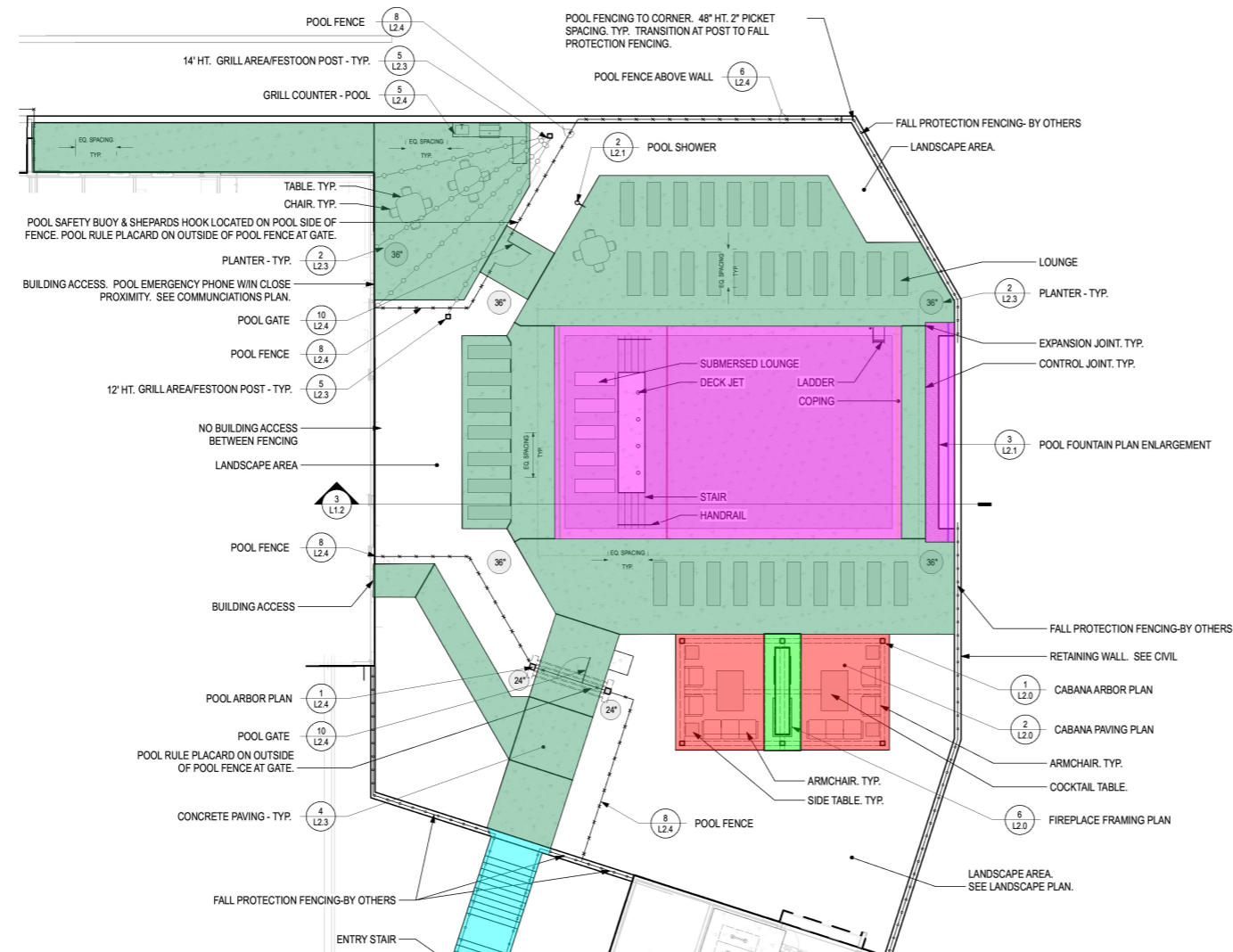
PROJECT NUMBER:
20-047

DRAWING TITLE:
LAYOUT AND MATERIALS PLAN

SHEET NUMBER:
L1.1



3 POOL SECTION
Scale: 3/8" = 1'-0"

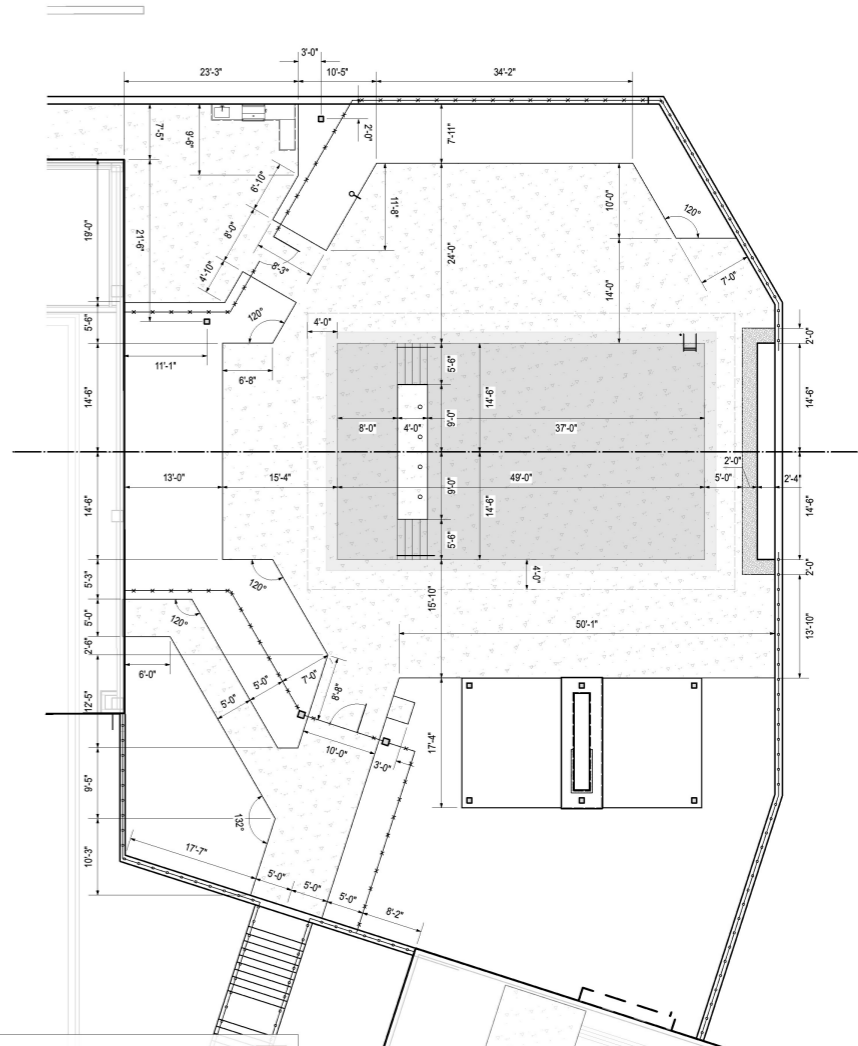


Concrete paving @ cabana	459.8 SQ FT
Concrete paving @ fireplace	95.5 SQ FT
Concrete paving @ pool	4,064.0 SQ FT
Pool slab - Plan	31.9 FT
Pool wall 1 - Plan	32.0 FT
Pool wall 2 - Plan	32.0 FT
Pool wall 3 - Plan	33.0 FT
Aggregate base for pool slab	1,806.4 SQ FT
RCC Stair w/ aggregate base	422.4 SQ FT

- POOL FURNISHING NOTES**
- CONTRACTOR TO PROVIDE SUBMITTALS FOR LA APPROVAL PRIOR TO CONSTRUCTION
 - COCKTAIL TABLE - MEZA 36" SQUARE COCKTAIL TABLE, MODEL #: M9607-ST, BY TEXACRAFT, WWW.TEXACRAFT.COM, COLOR TBD
 - SIDE TABLE - MEZA 24" SQUARE OCCASIONAL TABLE, MODEL #: M9624SQ-ST, BY TEXACRAFT, WWW.TEXACRAFT.COM, COLOR TBD
 - ARMCHAIR - VIBE MODULAR ARMLESS CHAIR, MODEL #: M32002, BY TEXACRAFT, WWW.TEXACRAFT.COM, COLOR TBD
 - TABLE - MEZA ADA TABLE 42" SQUARE, MODEL #: M9642-WCA, BY TEXACRAFT, WWW.TEXACRAFT.COM, COLOR TBD
 - CHAIR - VISION SLING RELAXED SLING STACK DINING CHAIR, MODEL #: M4401S, BY TEXACRAFT, WWW.TEXACRAFT.COM, COLOR TBD
 - CHAISE - VISION SLING RELAXED SLING STACK CHAISE, MODEL #: M4409S, BY TEXACRAFT, WWW.TEXACRAFT.COM, COLOR TBD
 - LOUNGER - IN-POOL LOUNGER, MODEL #: LLC, BY TEXACRAFT, WWW.TEXACRAFT.COM, WHITE
 - PLANTER - PONTO BY OLD TOWN FIBERGLASS, INC. 714.633.3732. OLDTOWNFIBERGLASS.COM, COLOR TBD, 24" - PCL2432; 36" PCL3632; 50" - PCL5048
 - POOL LADDER - ART-1003 ARTISAN SERIES BY SR SMITH; WWW.SRSMITH.COM. PROVIDE CORRESPONDING BRONZE ANCHOR AND ESCUTCHEON, COLOR TBD
 - POOL STAIR RAIL - ART-1004 ARTISAN SERIES BY SR SMITH; WWW.SRSMITH.COM. PROVIDE CORRESPONDING BRONZE ANCHOR AND ESCUTCHEON, COLOR TBD
 - FESTOON LIGHTS - SEE ELECTRICAL
 - PLANTER - SEE SITE FURNISHING NOTES L1.0

1 POOL LAYOUT AND MATERIALS PLAN
Scale: 1" = 10'-0"

POOL DESIGN SHOWN BY LANDSCAPE ARCHITECT ARE FOR DESIGN REFERENCE ONLY. POOL CONTRACTOR AND ENGINEER TO PROVIDE SHOP DRAWINGS AND SPECIFICATIONS TO LOCAL REGULATING BODY SHOWING FULL COMPLIANCE WITH ALL LOCAL REQUIREMENTS FOR CODE, REVIEW, PERMITTING, ETC. CONSTRUCTION ACTIVITIES REQUIRE SUBMITTED AND APPROVED DRAWINGS AND SPECIFICATIONS AS WELL AS OFFICIAL CONSTRUCTION PERMIT AS DEFINED IN LOCAL CODE DOCUMENTATION.



2 POOL DIMENSIONING PLAN
Scale: 1" = 10'-0"

KEY PLAN:

ARCHITECT OF RECORD:
WILLIAMS BLACKSTOCK ARCHITECTS
2204 FIRST AVENUE SOUTH, SUITE 200
BIRMINGHAM, ALABAMA 35233

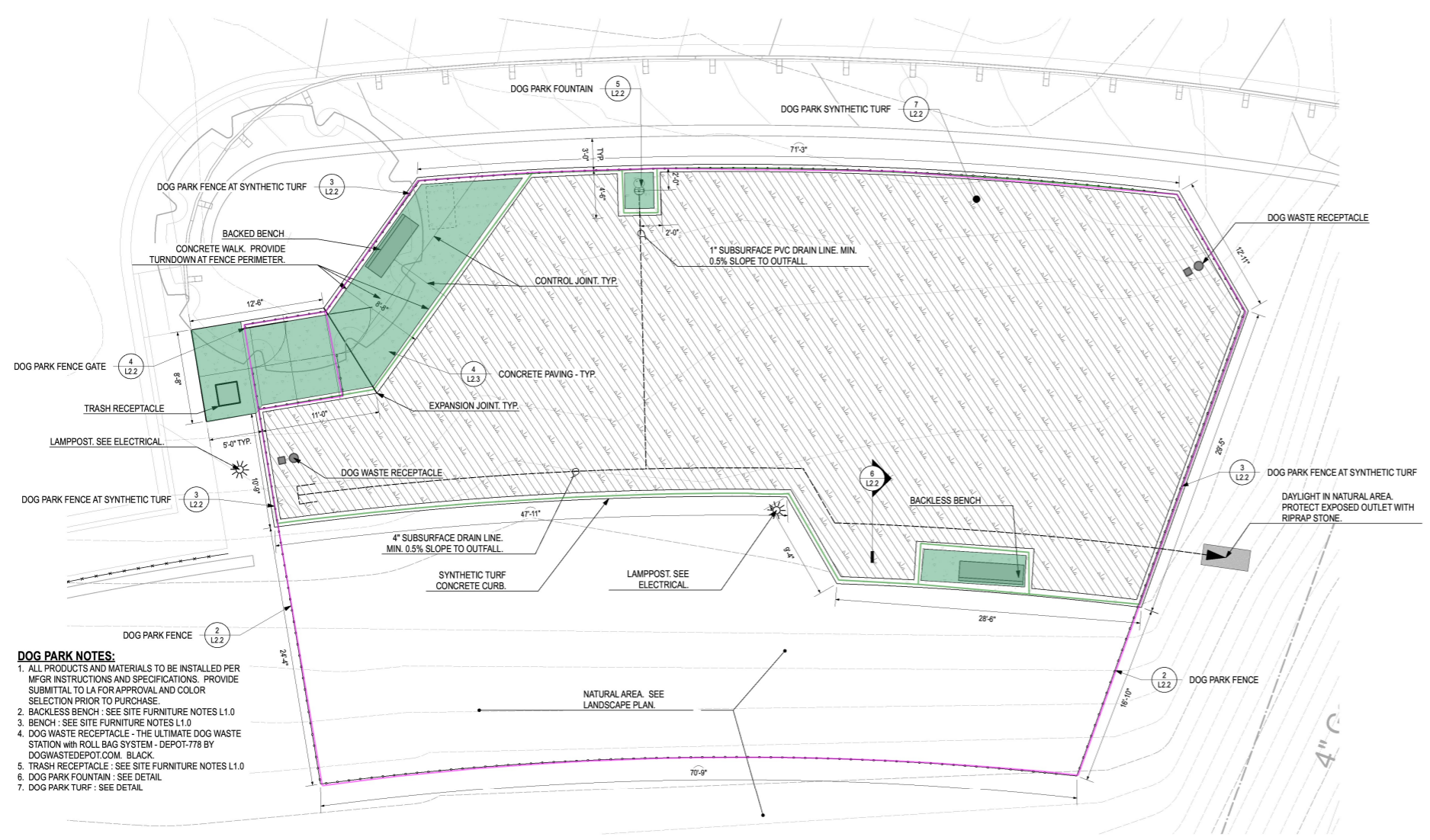
ISSUE DATE:
07-30-2021

REVISIONS:		
NO.	DATE	DESCRIPTION

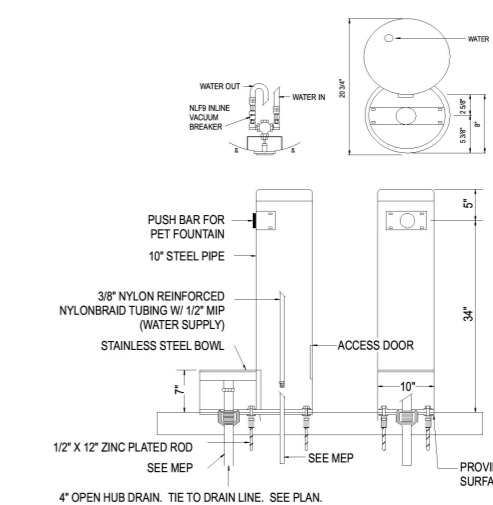
PROJECT NUMBER:
20-047

DRAWING TITLE:
POOL LAYOUT AND DIMENSIONING PLANS

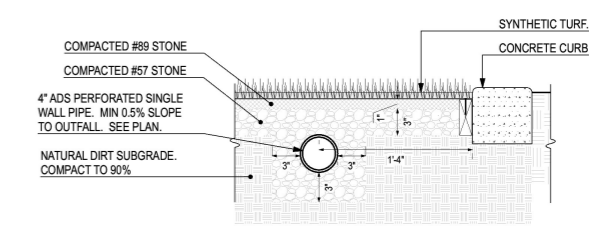
SHEET NUMBER:
L1.2



- DOG PARK NOTES:**
1. ALL PRODUCTS AND MATERIALS TO BE INSTALLED PER MFR INSTRUCTIONS AND SPECIFICATIONS. PROVIDE SUBMITTAL TO IA FOR APPROVAL AND COLOR SELECTION PRIOR TO PURCHASE.
 2. BACKLESS BENCH - SEE SITE FURNITURE NOTES L1.0
 3. BENCH - SEE SITE FURNITURE NOTES L1.0
 4. DOG WASTE RECEPTACLE - THE ULTIMATE DOG WASTE STATION WITH ROLL BAG SYSTEM - DEPOT-778 BY DOGWASTEDEPOT.COM. BLACK.
 5. TRASH RECEPTACLE - SEE SITE FURNITURE NOTES L1.0
 6. DOG PARK FOUNTAIN - SEE DETAIL
 7. DOG PARK TURF - SEE DETAIL



- 5 DOG PARK FOUNTAIN**
Scale: 1" = 1'-0"
- NOTES:
1. MODEL 300 SM BY MOST DEPENDABLE FOUNTAINS, INC.; COLOR TBD. ARLINGTON, TN 38002-0587; (801) 867-0039; WWW.MOSTDEPENDABLE.COM
2. PET FOUNTAIN IS PROVIDED WITH AN IN-LINE VACUUM BREAKER, PLUS A 1 GPM FLOW RESTRICTOR.
3. PROVIDE AND INSTALL STAINLESS STEEL SURFACE CARRIER.
4. INSTALLATION TO BE COMPLETED IN ACCORDANCE WITH MANUFACTURER'S SPECIFICATIONS.



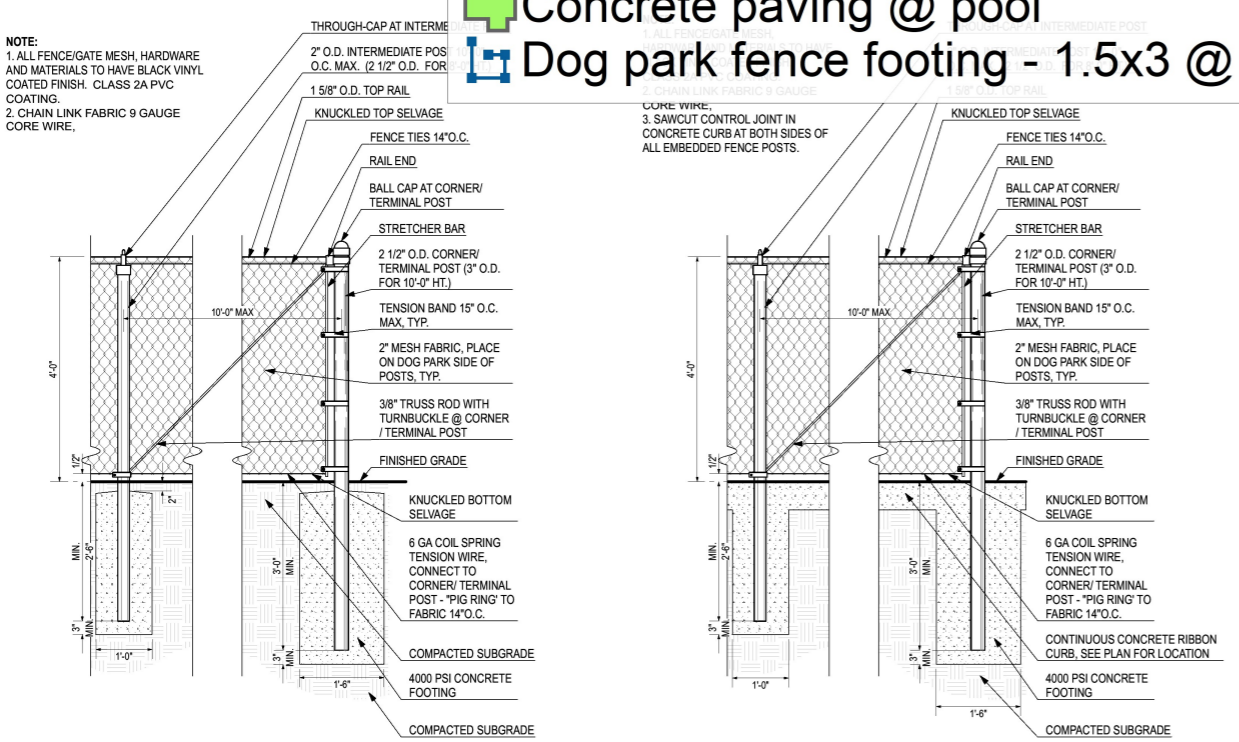
- 6 DOG PARK DRAIN LINE**
Scale: 1 1/2" = 1'-0"

- 1 DOG PARK ENLARGEMENT**
Scale: 3/16" = 1'-0"

6"x6" Concrete curb @ perimeter of synthetic turf
 Concrete paving @ pool
 Dog park fence footing - 1.5x3 @ 10' O.C

296.6 FT
 291.6 SQ FT
 282.6 FT

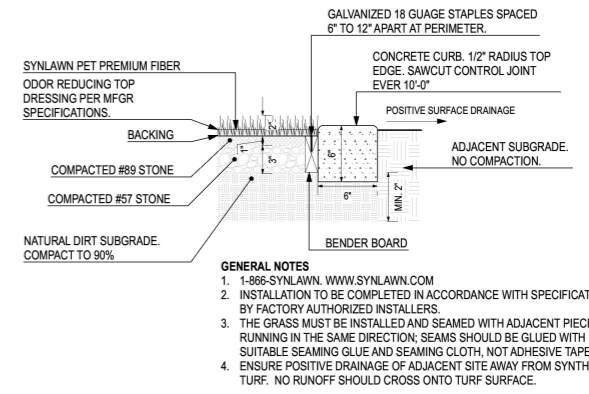
- NOTE:
1. ALL FENCE/GATE MESH, HARDWARE AND MATERIALS TO HAVE BLACK VINYL COATED FINISH. CLASS 2A PVC COATING.
2. CHAIN LINK FABRIC 9 GAUGE CORE WIRE.



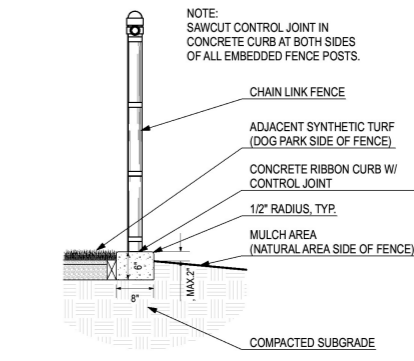
- 2 DOG PARK FENCE**
Scale: 3/4" = 1'-0"

- 3 DOG PARK FENCE AT SYNTHETIC TURF**
Scale: 3/4" = 1'-0"

- 4 DOG PARK FENCE GATE**
Scale: 3/4" = 1'-0"



- 7 DOG PARK SYNTHETIC TURF**
Scale: 1 1/2" = 1'-0"



- 8 DOG PARK FENCE W/ CURB SECTION**
Scale: 3/4" = 1'-0"

KEY PLAN:

ARCHITECT OF RECORD:
WILLIAMS BLACKSTOCK ARCHITECTS
2204 FIRST AVENUE SOUTH, SUITE 200
BIRMINGHAM, ALABAMA 35233

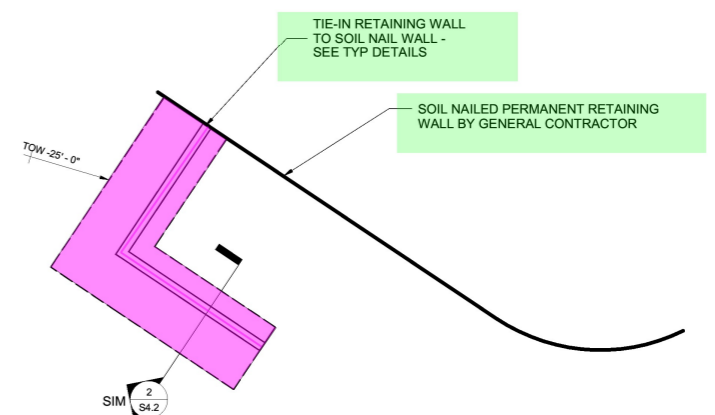
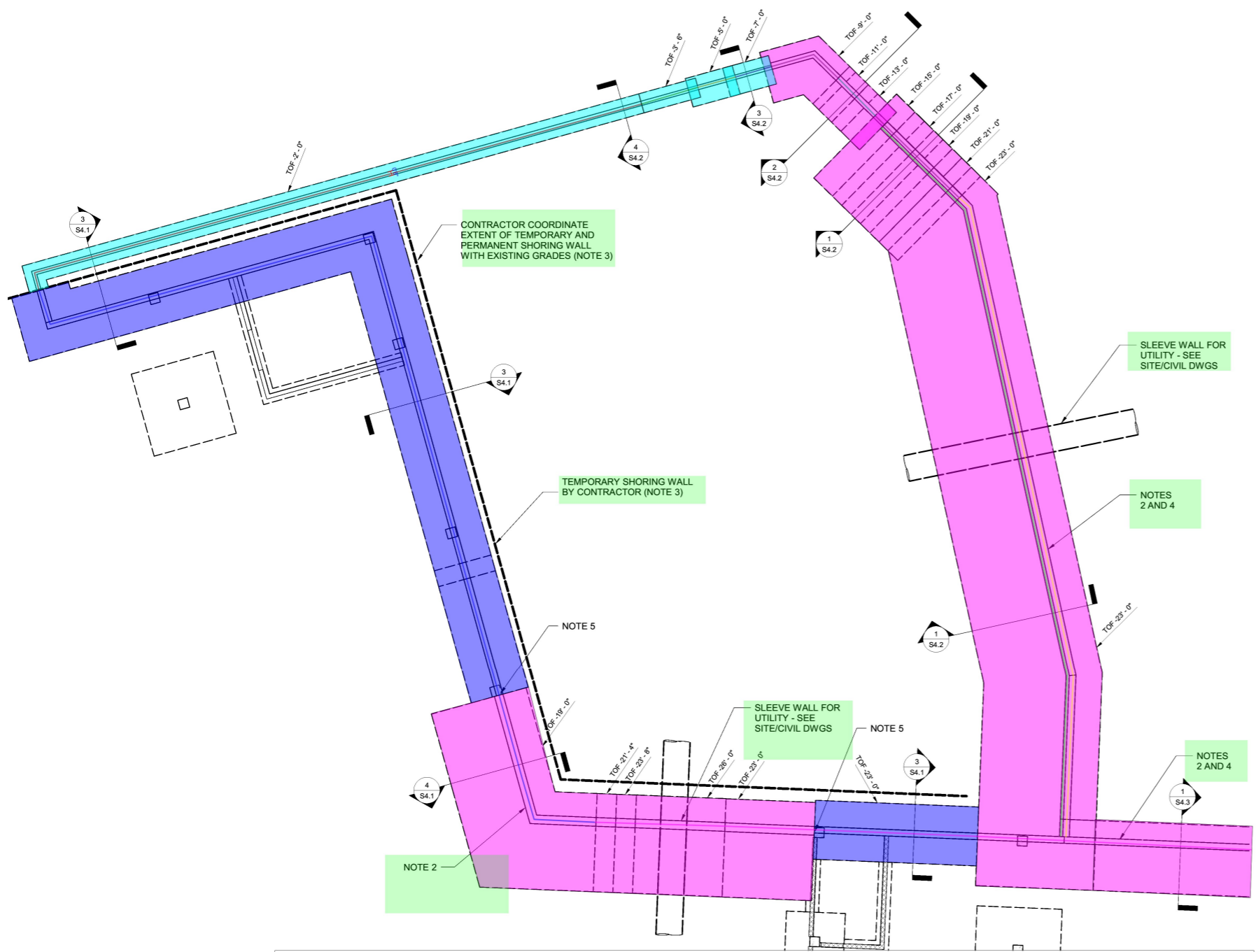
ISSUE DATE:
07-30-2021

REVISIONS:		
NO.	DATE	DESCRIPTION

PROJECT NUMBER:
20-047

DRAWING TITLE:
ENLARGEMENTS AND DETAILS

SHEET NUMBER:
L2.2



	12"Thk. RCC footing	396.3 SQ FT
	14"Thk. RCC footing	1,394.3 SQ FT
	18"Thk. RCC footing	3,950.9 SQ FT
	RCC wall - 0.67'x2'	98.9 FT
	RCC wall - 0.67'x3.5'	9.0 FT
	RCC wall - 0.67'x5'	5.9 FT
	RCC wall - 0.67'x7'	5.7 FT
	RCC wall - 1.5'x10'	115.4 FT
	RCC wall - 1'x9'	29.8 FT
	RCC wall - 1'x12'	8.1 FT
	RCC wall - 1'x13'	100.2 FT
	RCC wall - 1'x19'	158.3 FT
	RCC wall - 1'x24'	134.8 FT

TRASH ENCLOSURE PLAN
 1/8" = 1'-0"

KEY PLAN:
ARCHITECT OF RECORD:
WILLIAMS BLACKSTOCK ARCHITECTS 2204 FIRST AVENUE SOUTH, SUITE 200 BIRMINGHAM, ALABAMA 35233
ISSUE DATE:
07-30-2021
REVISIONS:
NO. DATE DESCRIPTION
PROJECT NUMBER:
20-047
DRAWING TITLE:
AMENITY SITE WALL AND TRASH ENCLOSURE PLAN
SHEET NUMBER:
SI.2