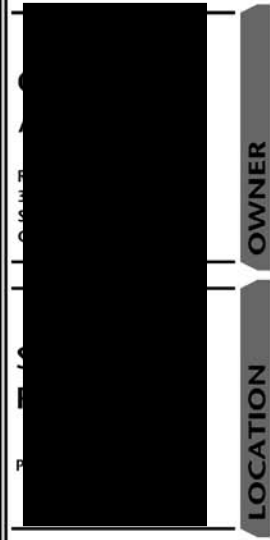


NOT FOR CONSTRUCTION

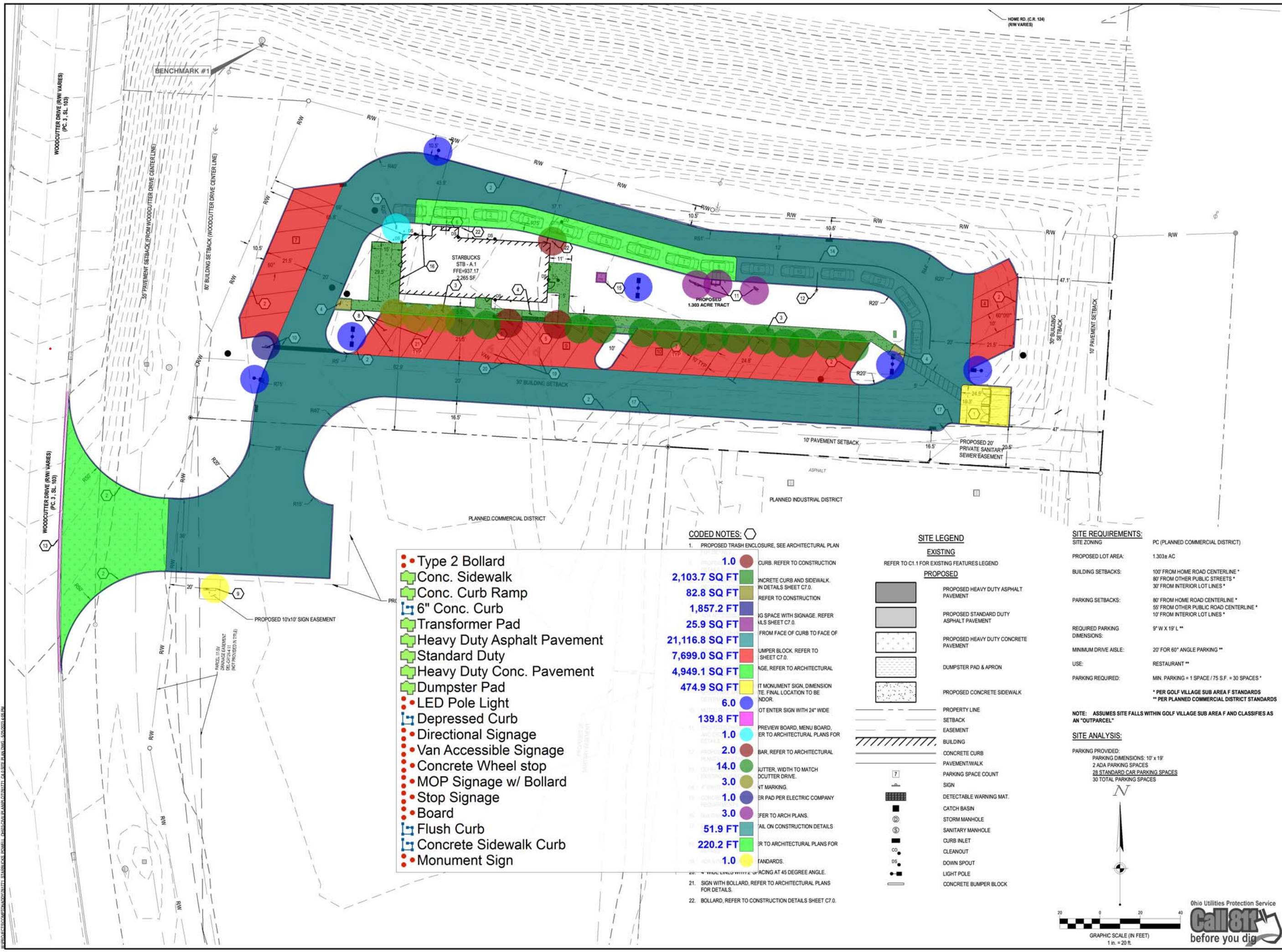


PERMIT DOCUMENTS
05.26.23

NO.	DESCRIPTION	DATE

This drawing and the design shown is the property of the architect. The reproduction, copying or use of this drawing without their written consent is prohibited and any infringement will be subject to legal action.

SITE PLAN
C4.0



- Type 2 Bollard
- Conc. Sidewalk
- Conc. Curb Ramp
- 6" Conc. Curb
- Transformer Pad
- Heavy Duty Asphalt Pavement
- Standard Duty
- Heavy Duty Conc. Pavement
- Dumpster Pad
- LED Pole Light
- Depressed Curb
- Directional Signage
- Van Accessible Signage
- Concrete Wheel stop
- MOP Signage w/ Bollard
- Stop Signage
- Board
- Flush Curb
- Concrete Sidewalk Curb
- Monument Sign

CODED NOTES:

1. PROPOSED TRASH ENCLOSURE, SEE ARCHITECTURAL PLAN
2. 1.0 CURB, REFER TO CONSTRUCTION
3. 2,103.7 SQ FT CONCRETE CURB AND SIDEWALK, IN DETAILS SHEET C7.0.
4. 82.8 SQ FT REFER TO CONSTRUCTION
5. 1,857.2 FT 1/2" SPACE WITH SIGNAGE, REFER TO ARCHITECTURAL SHEET C7.0.
6. 25.9 SQ FT FROM FACE OF CURB TO FACE OF
7. 21,116.8 SQ FT CURB BLOCK, REFER TO SHEET C7.0.
8. 7,699.0 SQ FT CURB, REFER TO ARCHITECTURAL
9. 4,949.1 SQ FT MONUMENT SIGN, DIMENSION TO BE INDICATED.
10. 474.9 SQ FT MONUMENT SIGN WITH 24" WIDE
11. 6.0 PREVIEW BOARD, MENU BOARD, REFER TO ARCHITECTURAL PLANS FOR
12. 139.8 FT BAR, REFER TO ARCHITECTURAL
13. 1.0 LETTER, WIDTH TO MATCH CURB DRIVE.
14. 14.0 1/2" MARKING.
15. 3.0 CURB PAD PER ELECTRIC COMPANY
16. 1.0 REFER TO ARCH PLANS.
17. 3.0 MAIL ON CONSTRUCTION DETAILS
18. 51.9 FT REFER TO ARCHITECTURAL PLANS FOR
19. 220.2 FT STANDARDS.
20. 1.0 4" WIDE END OF CURB SPACING AT 45 DEGREE ANGLE.
21. SIGN WITH BOLLARD, REFER TO ARCHITECTURAL PLANS FOR DETAILS.
22. BOLLARD, REFER TO CONSTRUCTION DETAILS SHEET C7.0.

SITE LEGEND

- EXISTING**
- REFER TO C1.1 FOR EXISTING FEATURES LEGEND
- PROPOSED**
- PROPOSED HEAVY DUTY ASPHALT PAVEMENT
 - PROPOSED STANDARD DUTY ASPHALT PAVEMENT
 - PROPOSED HEAVY DUTY CONCRETE PAVEMENT
 - DUMPSTER PAD & APRON
 - PROPOSED CONCRETE SIDEWALK
 - PROPERTY LINE
 - SETBACK
 - EASEMENT
 - BUILDING
 - CONCRETE CURB PAVEMENT/WALK
 - PARKING SPACE COUNT
 - SIGN
 - DETECTABLE WARNING MAT.
 - CATCH BASIN
 - STORM MANHOLE
 - SANITARY MANHOLE
 - CURB INLET
 - CLEANOUT
 - DOWN SPOUT
 - LIGHT POLE
 - CONCRETE BUMPER BLOCK

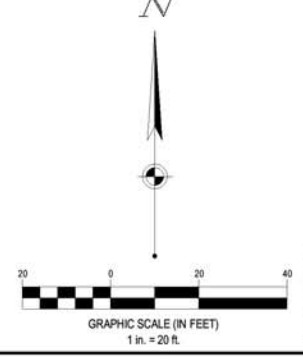
SITE REQUIREMENTS:

- SITE ZONING:** PC (PLANNED COMMERCIAL DISTRICT)
- PROPOSED LOT AREA:** 1.303± AC
- BUILDING SETBACKS:** 100' FROM HOME ROAD CENTERLINE *
80' FROM OTHER PUBLIC STREETS *
30' FROM INTERIOR LOT LINES *
- PARKING SETBACKS:** 80' FROM HOME ROAD CENTERLINE *
55' FROM OTHER PUBLIC ROAD CENTERLINE *
10' FROM INTERIOR LOT LINES *
- REQUIRED PARKING DIMENSIONS:** 9' W X 19' L **
- MINIMUM DRIVE AISLE:** 20' FOR 60° ANGLE PARKING **
- USE:** RESTAURANT **
- PARKING REQUIRED:** MIN. PARKING = 1 SPACE / 75 S.F. = 30 SPACES *
* PER GOLF VILLAGE SUB AREA F STANDARDS
** PER PLANNED COMMERCIAL DISTRICT STANDARDS

NOTE: ASSUMES SITE FALLS WITHIN GOLF VILLAGE SUB AREA F AND CLASSIFIES AS AN "OUTPARCEL"

SITE ANALYSIS:

- PARKING PROVIDED:**
- PARKING DIMENSIONS: 10' x 19'
 - 2 ADA PARKING SPACES
 - 28 STANDARD CAR PARKING SPACES
 - 30 TOTAL PARKING SPACES



Ohio Utilities Protection Service
Call 811
before you dig

NOT FOR CONSTRUCTION

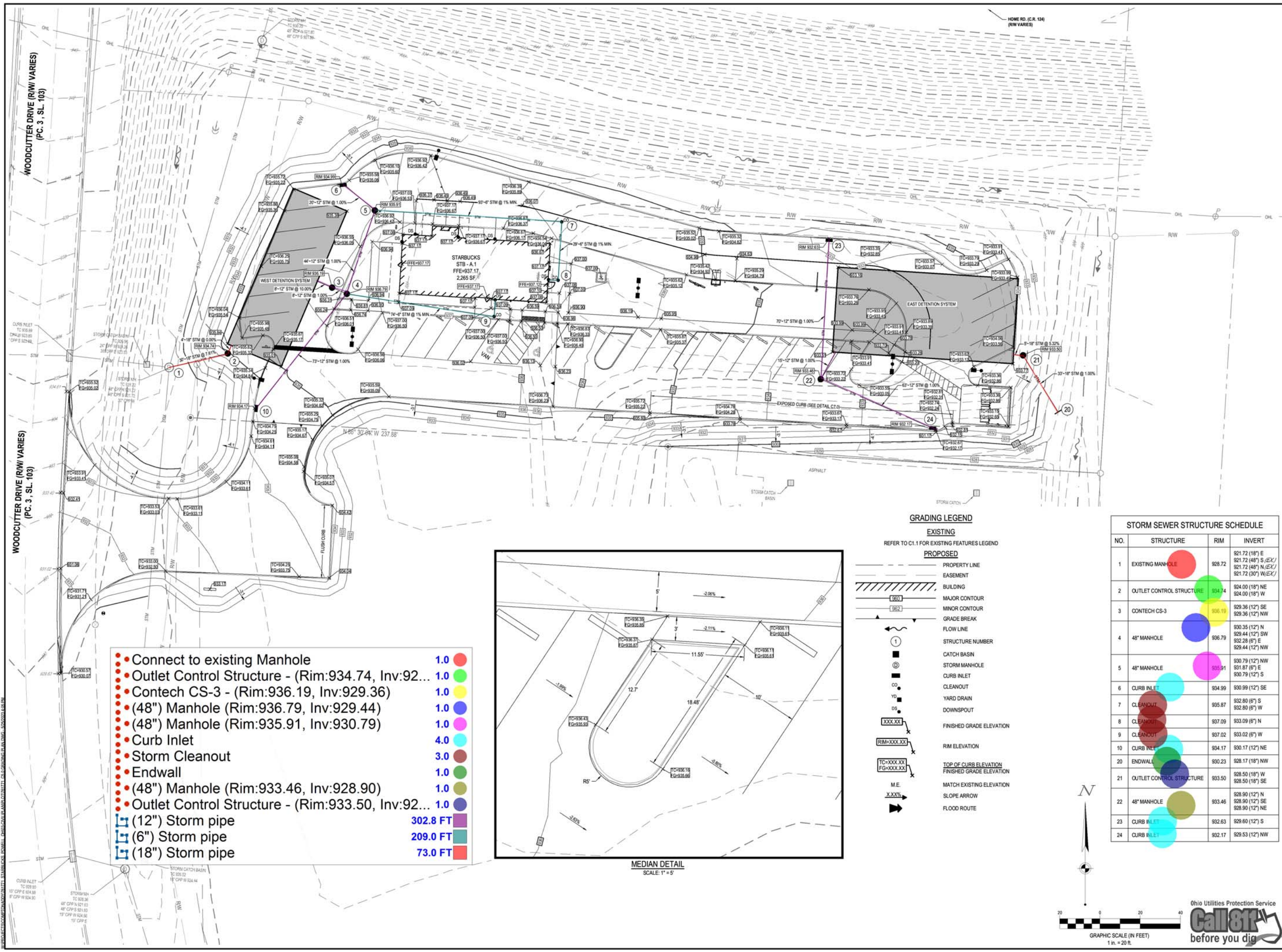


OWNER
LOCATION
DATE

REVISIONS

NO.	DESCRIPTION	DATE

This drawing and the design shown is the property of the architect. The reproduction, copying or use of this drawing without their written consent is prohibited and any infringement will be subject to legal action.

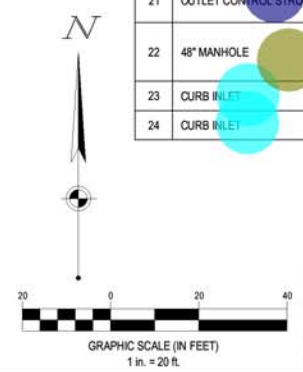


- Connect to existing Manhole 1.0
- Outlet Control Structure - (Rim:934.74, Inv:92... 1.0
- Contech CS-3 - (Rim:936.19, Inv:929.36) 1.0
- (48") Manhole (Rim:936.79, Inv:929.44) 1.0
- (48") Manhole (Rim:935.91, Inv:930.79) 1.0
- Curb Inlet 4.0
- Storm Cleanout 3.0
- Endwall 1.0
- (48") Manhole (Rim:933.46, Inv:928.90) 1.0
- Outlet Control Structure - (Rim:933.50, Inv:92... 1.0
- (12") Storm pipe 302.8 FT
- (6") Storm pipe 209.0 FT
- (18") Storm pipe 73.0 FT

- GRADING LEGEND**
- EXISTING**
REFER TO C1.1 FOR EXISTING FEATURES LEGEND
- PROPOSED**
- PROPERTY LINE
 - EASEMENT
 - ▨ BUILDING
 - MAJOR CONTOUR
 - MINOR CONTOUR
 - GRADE BREAK
 - FLOW LINE
 - STRUCTURE NUMBER
 - ⊙ CATCH BASIN
 - ⊙ STORM MANHOLE
 - ⊙ CURB INLET
 - ⊙ CLEANOUT
 - ⊙ YARD DRAIN
 - ⊙ DOWNSPOUT
 - FINISHED GRADE ELEVATION
 - RIM ELEVATION
 - TOP OF CURB ELEVATION
 - FINISHED GRADE ELEVATION
 - M.E.
 - MATCH EXISTING ELEVATION
 - SLOPE ARROW
 - FLOOD ROUTE

STORM SEWER STRUCTURE SCHEDULE

NO.	STRUCTURE	RIM	INVERT
1	EXISTING MANHOLE	928.72	921.72 (18") E 921.72 (48") S/EXJ 921.72 (30") W/EXJ
2	OUTLET CONTROL STRUCTURE	934.74	924.00 (18") NE 924.00 (18") W
3	CONTECH CS-3	936.19	929.36 (12") SE 929.36 (12") NW
4	48" MANHOLE	936.79	930.35 (12") N 929.44 (12") SW 932.28 (6") E 929.44 (12") NW
5	48" MANHOLE	935.91	930.79 (12") NW 931.87 (6") E 930.79 (12") S
6	CURB INLET	934.99	930.99 (12") SE
7	CLEANOUT	935.87	932.80 (6") S 932.80 (6") W
8	CLEANOUT	937.09	933.09 (6") N
9	CLEANOUT	937.02	933.02 (6") W
10	CURB INLET	934.17	930.17 (12") NE
20	ENDWALL	930.23	928.17 (18") NW
21	OUTLET CONTROL STRUCTURE	933.50	928.50 (18") W 928.50 (18") SE
22	48" MANHOLE	933.46	928.90 (12") N 928.90 (12") SE 928.90 (12") NE
23	CURB INLET	932.63	929.60 (12") S
24	CURB INLET	932.17	929.53 (12") NW



Ohio Utilities Protection Service
Call 811
before you dig

NOT FOR CONSTRUCTION SEAL



CONSULTANTS

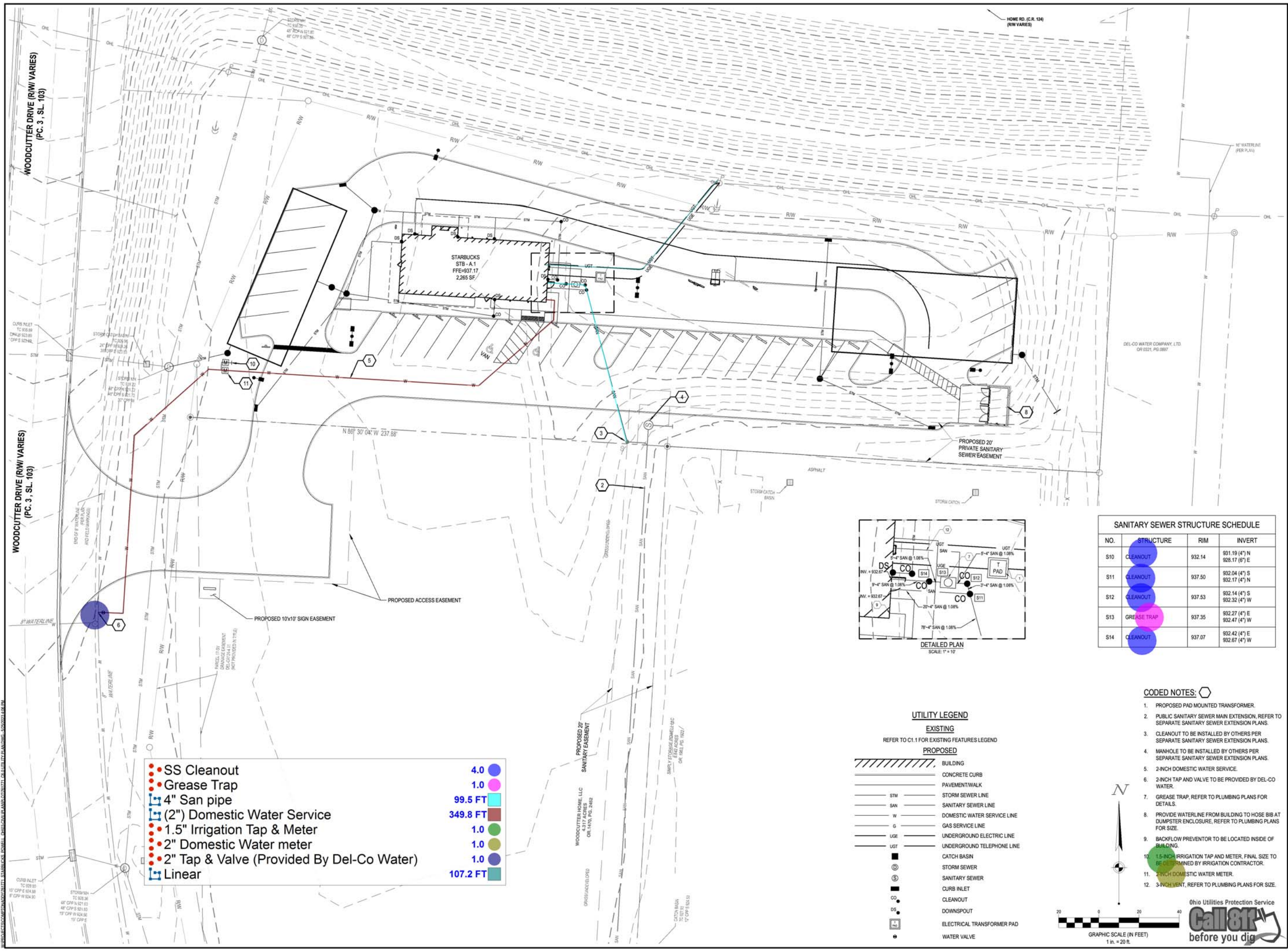
OWNER

LOCATION

DATE

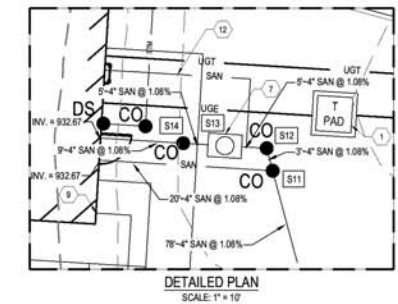
REVISIONS

SHEET



SANITARY SEWER STRUCTURE SCHEDULE

NO.	STRUCTURE	RIM	INVERT
S10	CLEANOUT	932.14	931.19 (4") N 928.17 (6") E
S11	CLEANOUT	937.50	932.04 (4") S 932.17 (4") N
S12	CLEANOUT	937.53	932.14 (4") S 932.32 (4") W
S13	GREASE TRAP	937.35	932.27 (4") E 932.47 (4") W
S14	CLEANOUT	937.07	932.42 (4") E 932.67 (4") W



● SS Cleanout	4.0	●
● Grease Trap	1.0	●
■ 4" San pipe	99.5 FT	■
■ (2") Domestic Water Service	349.8 FT	■
● 1.5" Irrigation Tap & Meter	1.0	●
● 2" Domestic Water meter	1.0	●
● 2" Tap & Valve (Provided By Del-Co Water)	1.0	●
■ Linear	107.2 FT	■

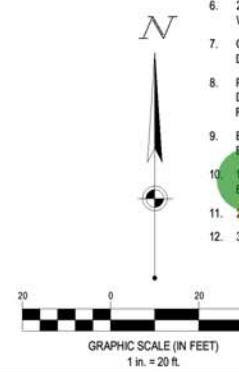
UTILITY LEGEND

EXISTING
REFER TO C1.1 FOR EXISTING FEATURES LEGEND

PROPOSED

▨	BUILDING
—	CONCRETE CURB
—	PAVEMENT/WALK
STM	STORM SEWER LINE
SAN	SANITARY SEWER LINE
W	DOMESTIC WATER SERVICE LINE
G	GAS SERVICE LINE
UGE	UNDERGROUND ELECTRIC LINE
UGT	UNDERGROUND TELEPHONE LINE
■	CATCH BASIN
⊙	STORM SEWER
⊙	SANITARY SEWER
■	CURB INLET
●	CLEANOUT
DS	DOWNSPOUT
■	ELECTRICAL TRANSFORMER PAD
●	WATER VALVE

- CODED NOTES:**
- PROPOSED PAD MOUNTED TRANSFORMER.
 - PUBLIC SANITARY SEWER MAIN EXTENSION, REFER TO SEPARATE SANITARY SEWER EXTENSION PLANS.
 - CLEANOUT TO BE INSTALLED BY OTHERS PER SEPARATE SANITARY SEWER EXTENSION PLANS.
 - MANHOLE TO BE INSTALLED BY OTHERS PER SEPARATE SANITARY SEWER EXTENSION PLANS.
 - 2-INCH DOMESTIC WATER SERVICE.
 - 2-INCH TAP AND VALVE TO BE PROVIDED BY DEL-CO WATER.
 - GREASE TRAP, REFER TO PLUMBING PLANS FOR DETAILS.
 - PROVIDE WATERLINE FROM BUILDING TO HOSE BIB AT DUMPSTER ENCLOSURE, REFER TO PLUMBING PLANS FOR SIZE.
 - BACKFLOW PREVENTOR TO BE LOCATED INSIDE OF BUILDING.
 - 1.5-INCH IRRIGATION TAP AND METER, FINAL SIZE TO BE DETERMINED BY IRRIGATION CONTRACTOR.
 - 2-INCH DOMESTIC WATER METER.
 - 3-INCH VENT, REFER TO PLUMBING PLANS FOR SIZE.

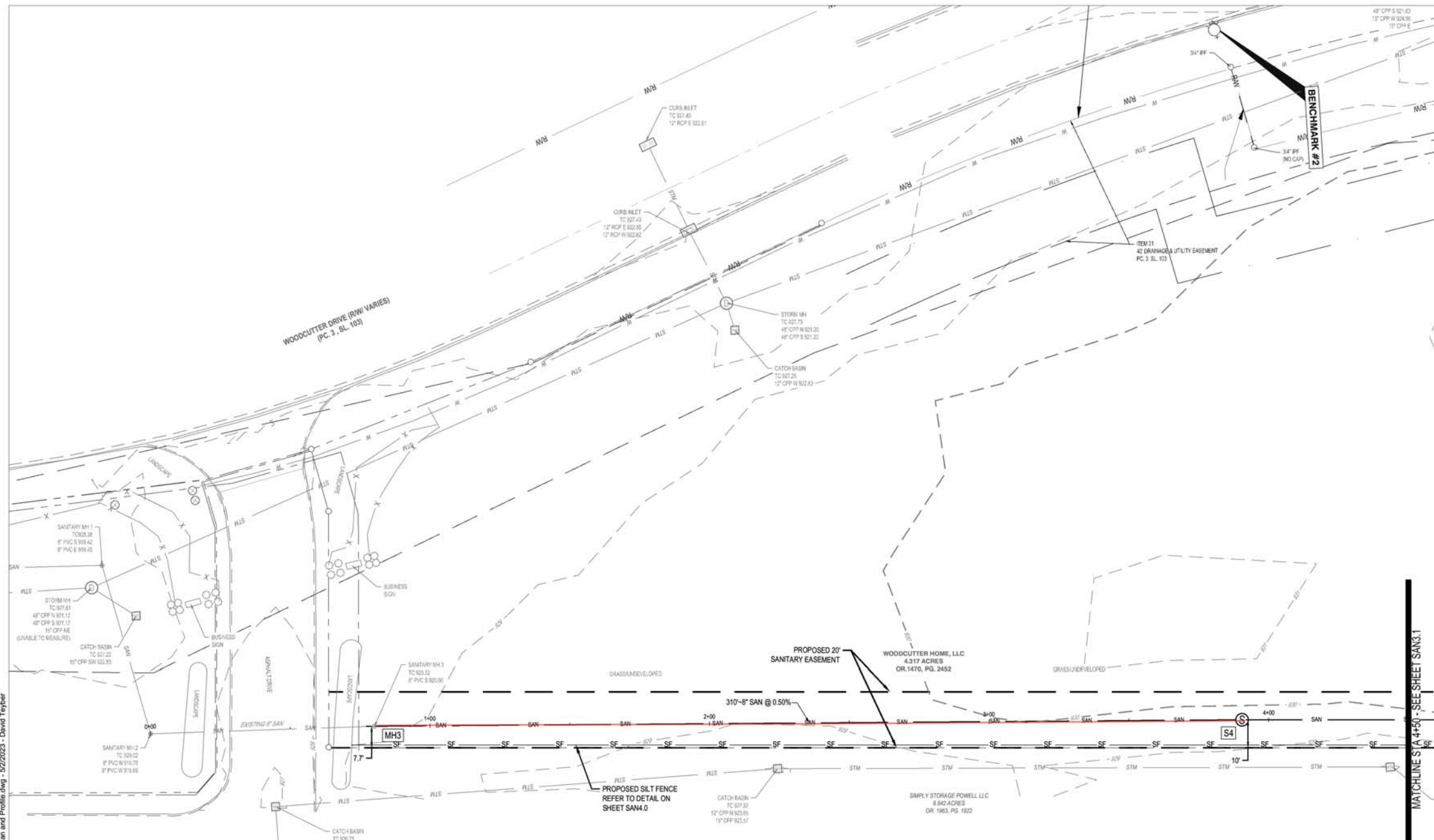


Ohio Utilities Protection Service
Call 811
before you dig

UTILITY PLAN

C6.0

W:\PROJECTS\COMP\TODDY\17171_San Sewer Plan and Profile.dwg - 5/22/2023 - David Toyler



SANITARY SEWER STRUCTURE SCHEDULE			
NO.	STRUCTURE	RIM	INVERT
MH3	EXISTING MANHOLE	929.52	920.10 (8') N 920.00 (8') S
S4	PRECAST MANHOLE TYPE A	930.19	924.21 (8') N 924.11 (8') S
S5	PRECAST MANHOLE TYPE A	933.00	925.82 (8') S 927.05 (2') E
S10	CLEANOUT	933.03	931.19 (8') N 928.17 (8') E

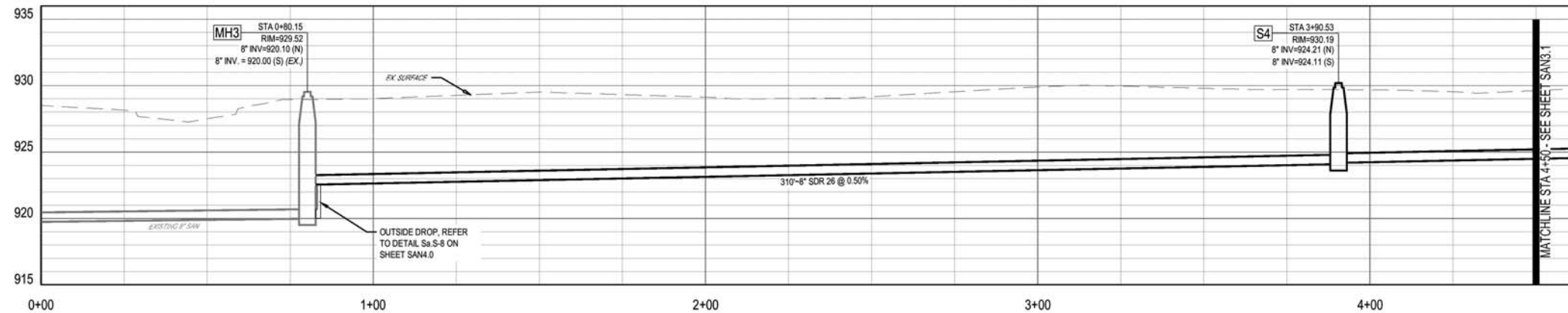
- Connect to existing SS Manhole
 - SS Precast Manhole Type "A" (Rim:930.19, Inv:924.11)
 - SS Precast Manhole Type "A" (Rim:933.00, Inv:927.05)
 - SS Cleanout
 - 8" Sanitary pipe
- 1.0 ●

1.0 ●

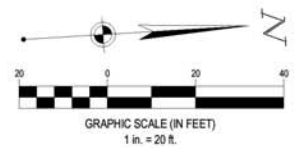
1.0 ●

1.0 ●

310.8 FT ■



MH3-S5 PROFILE
SCALE: 1" = 20' HORIZ.; 1" = 5' VERT.



Ohio Utilities Protection Service
Call 811
before you dig



STATE OF OHIO
 COUNTY OF COLUMBIA
 WOODCUTTER DR
 POWELL, OH 43065

MATCHLINE STA 4+50 - SEE SHEET SAN3.1
 MATCHLINE STA 4+50 - SEE SHEET SAN3.1

1771
 = 20'
 PCW
 BAP
 2023
 NOT FOR CONSTRUCTION

**SANITARY SEWER
PLAN AND PROFILE**

SAN3.0

SITE NOTES

1. ARCHITECTURAL SITE PLAN IS FOR REFERENCE ONLY. REFER TO CIVIL DRAWINGS FOR COMPLETE PLANS & DETAILS.

2. FROST SLAB AT ALL EXTERIOR DOORS



ARCHITECTURE 2948 SIDCO DRIVE
 PLANNING NASHVILLE, TN 37204
 ENGINEERING (615) 244-8170
 GRAPHICS (615) 244-8141
 www.mjnarch.com



SEAL

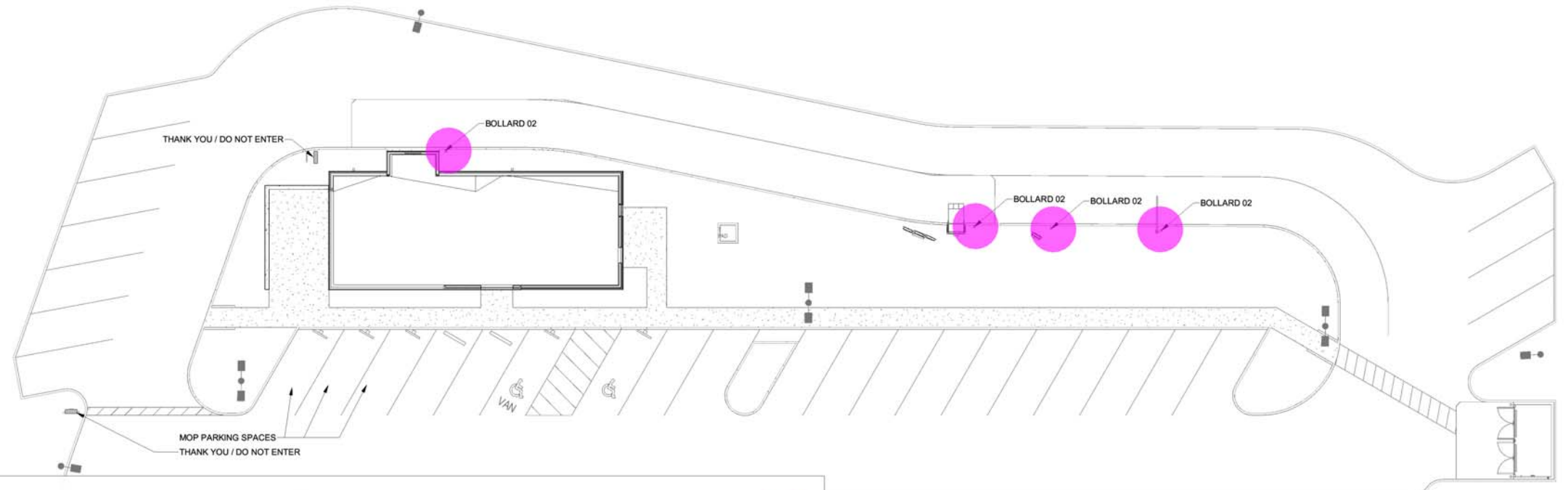
CONSULTANTS

OWNER

LOCATION

REVISIONS

SHEET



••• Type 2 Bollard

4.0 ●

① ARCHITECTURAL SITE PLAN
 1/16" = 1'-0"

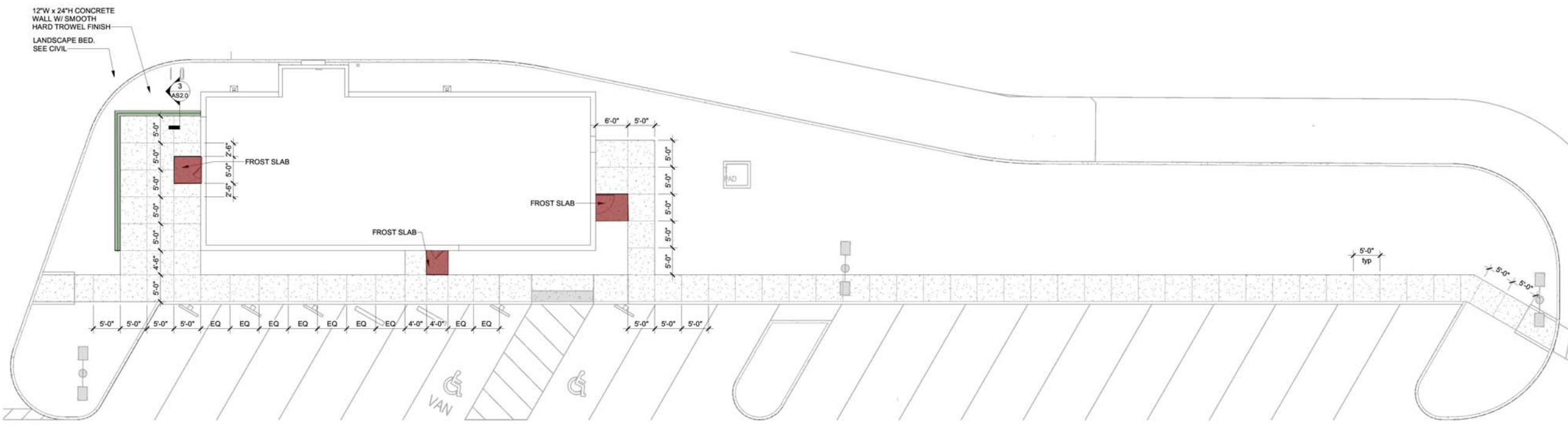
NO.	DESCRIPTION	DATE

This drawing and the design shown is the property of the architect. The reproduction, copying or use of this drawing without their written consent is prohibited and any infringement will be subject to legal action.

ARCHITECTURAL SITE PLAN

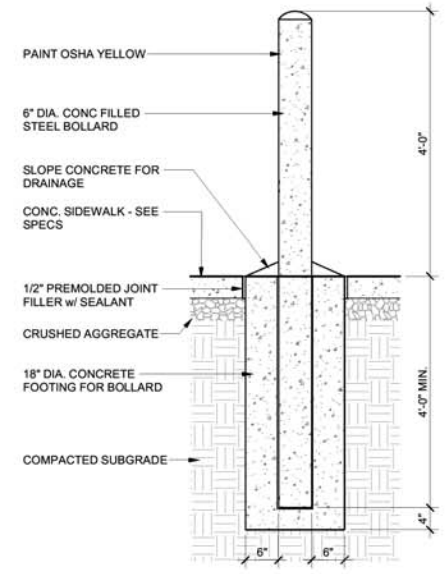
AS1.0

C:\Users\stahl\Documents\22120 - Powell - SBUX - R20 - Mk. 2 - stahl.rvt



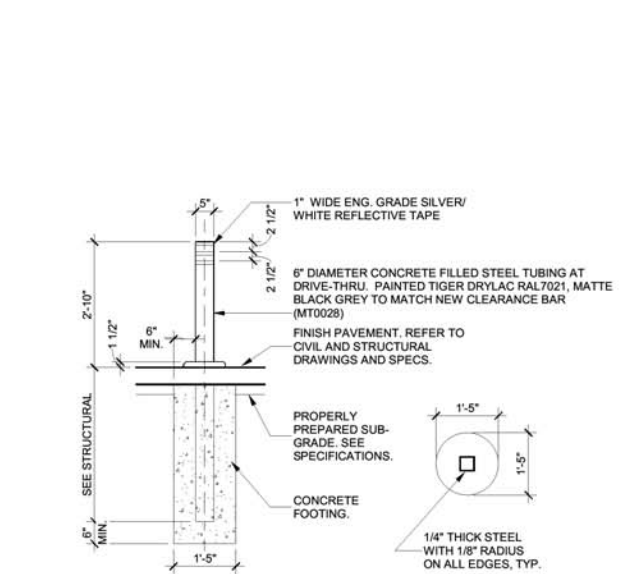
1 SIDEWALK PLAN

1" = 10'-0"



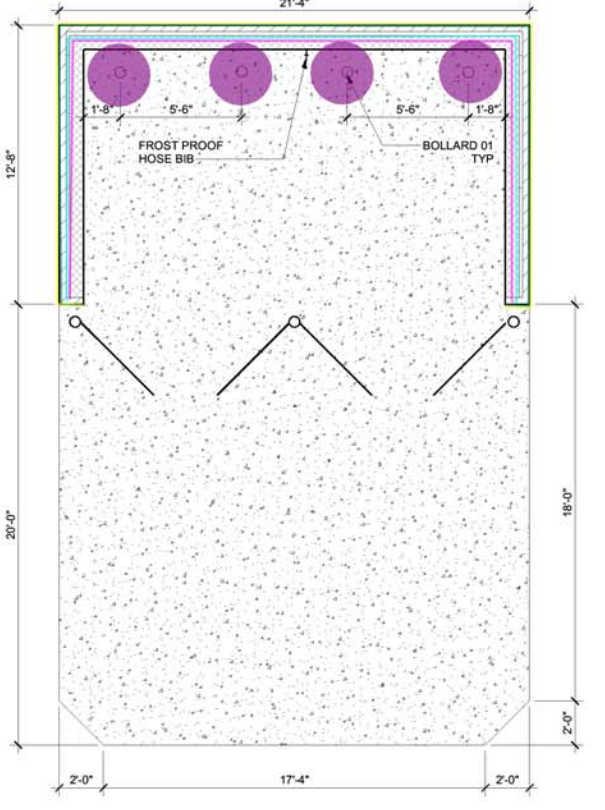
6 BOLLARD 01 DETAIL

3/4" = 1'-0"



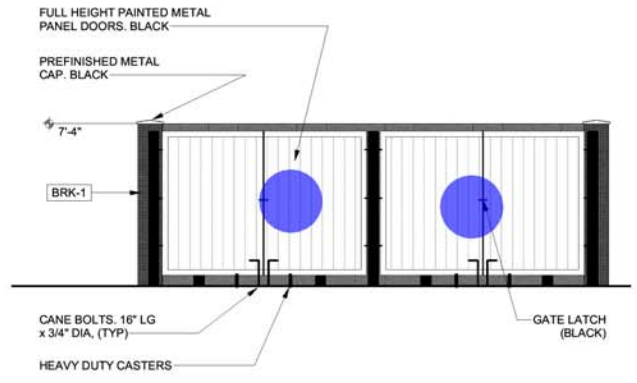
5 NON-ILLUMINATED - BOLLARD 02

1/2" = 1'-0"



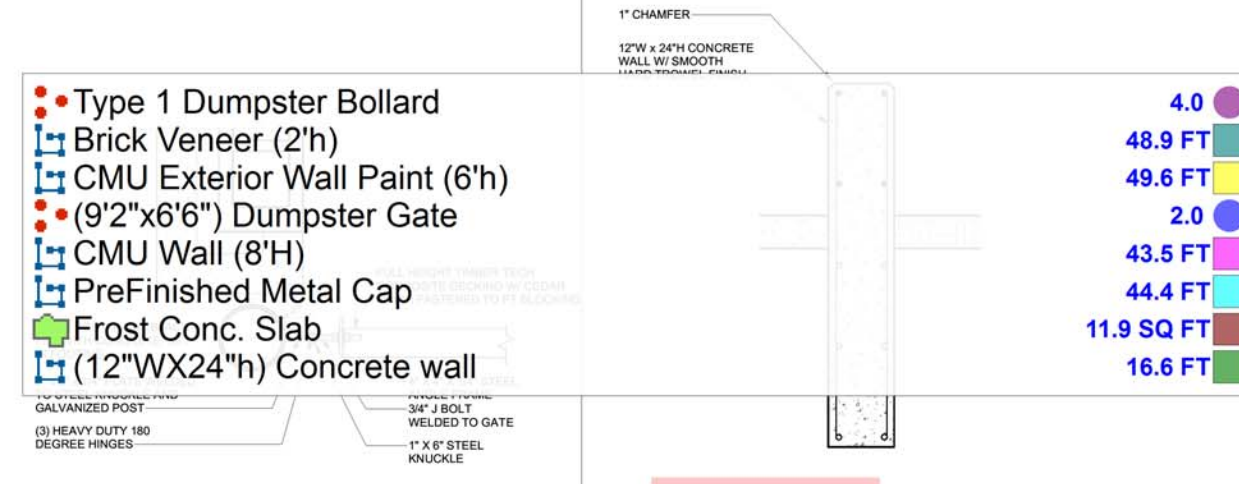
2 TRASH ENCLOSURE

1/4" = 1'-0"



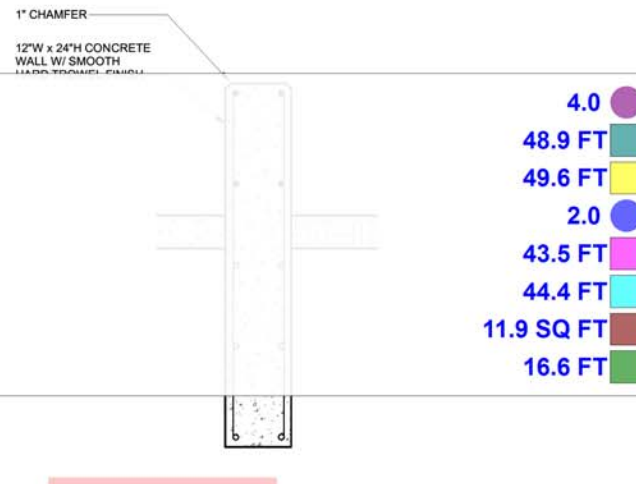
7 TRASH ENCLOSURE

1/4" = 1'-0"



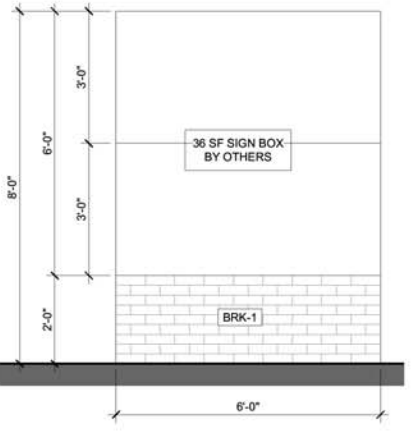
4 ENCLOSURE GATE HINGE

1 1/2" = 1'-0"



3 SEAT WALL

3/4" = 1'-0"



8 MONUMENT SIGN

1/2" = 1'-0"

- Type 1 Dumpster Bollard
- Brick Veneer (2'h)
- CMU Exterior Wall Paint (6'h)
- (9'2"x6'6") Dumpster Gate
- CMU Wall (8'H)
- PreFinished Metal Cap
- Frost Conc. Slab
- (12"WX24"h) Concrete wall

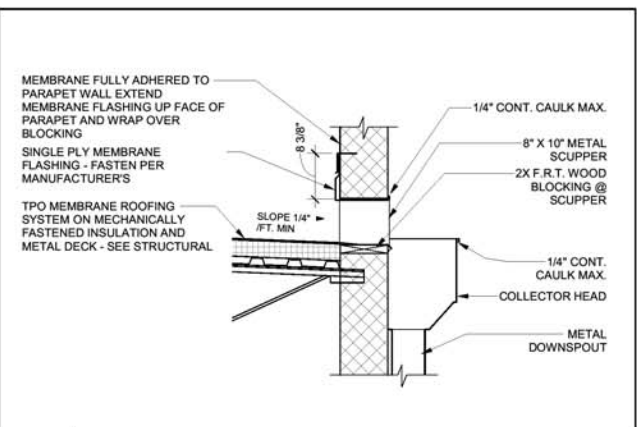
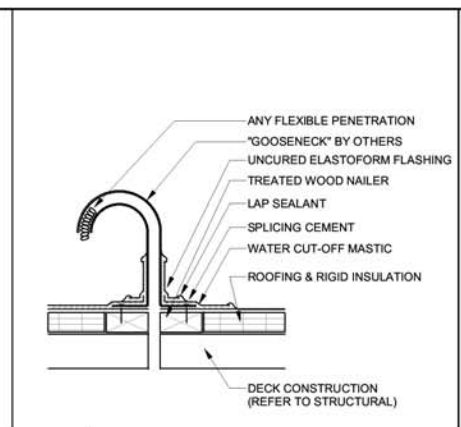
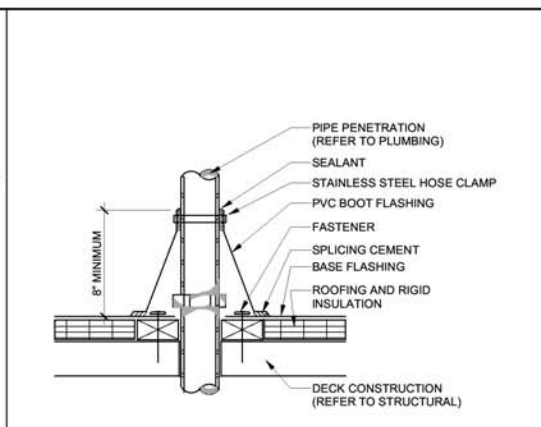
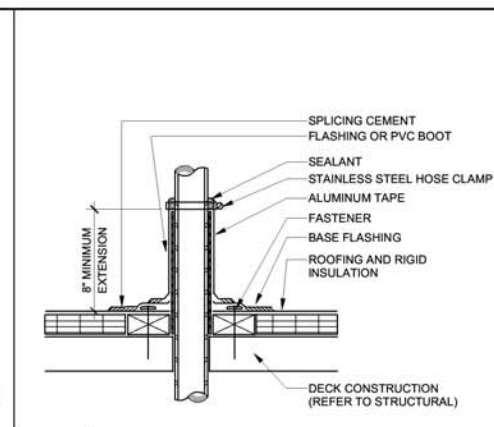
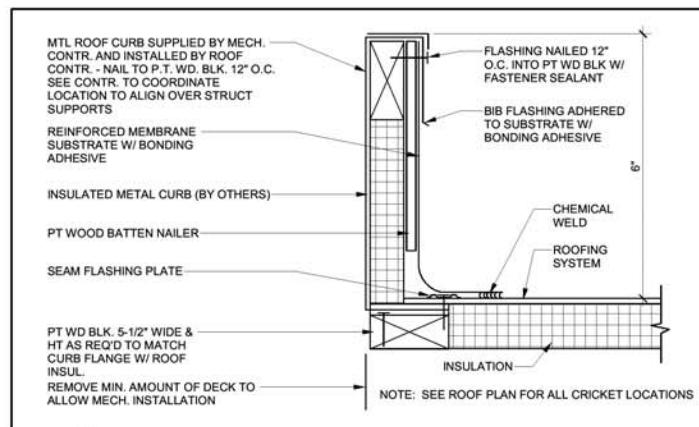
- 4.0
- 48.9 FT
- 49.6 FT
- 2.0
- 43.5 FT
- 44.4 FT
- 11.9 SQ FT
- 16.6 FT

NO.	DESCRIPTION	DATE

This drawing and the design shown is the property of the architect. The reproduction, copying or use of this drawing without their written consent is prohibited and any infringement will be subject to legal action.

SITE DETAILS

C:\Users\stah\Documents\22120 - Powell - SBUX - R20 - Mk.2 - stah.rvt



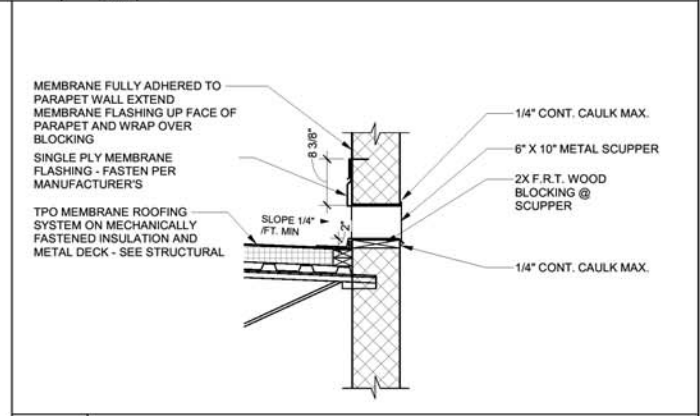
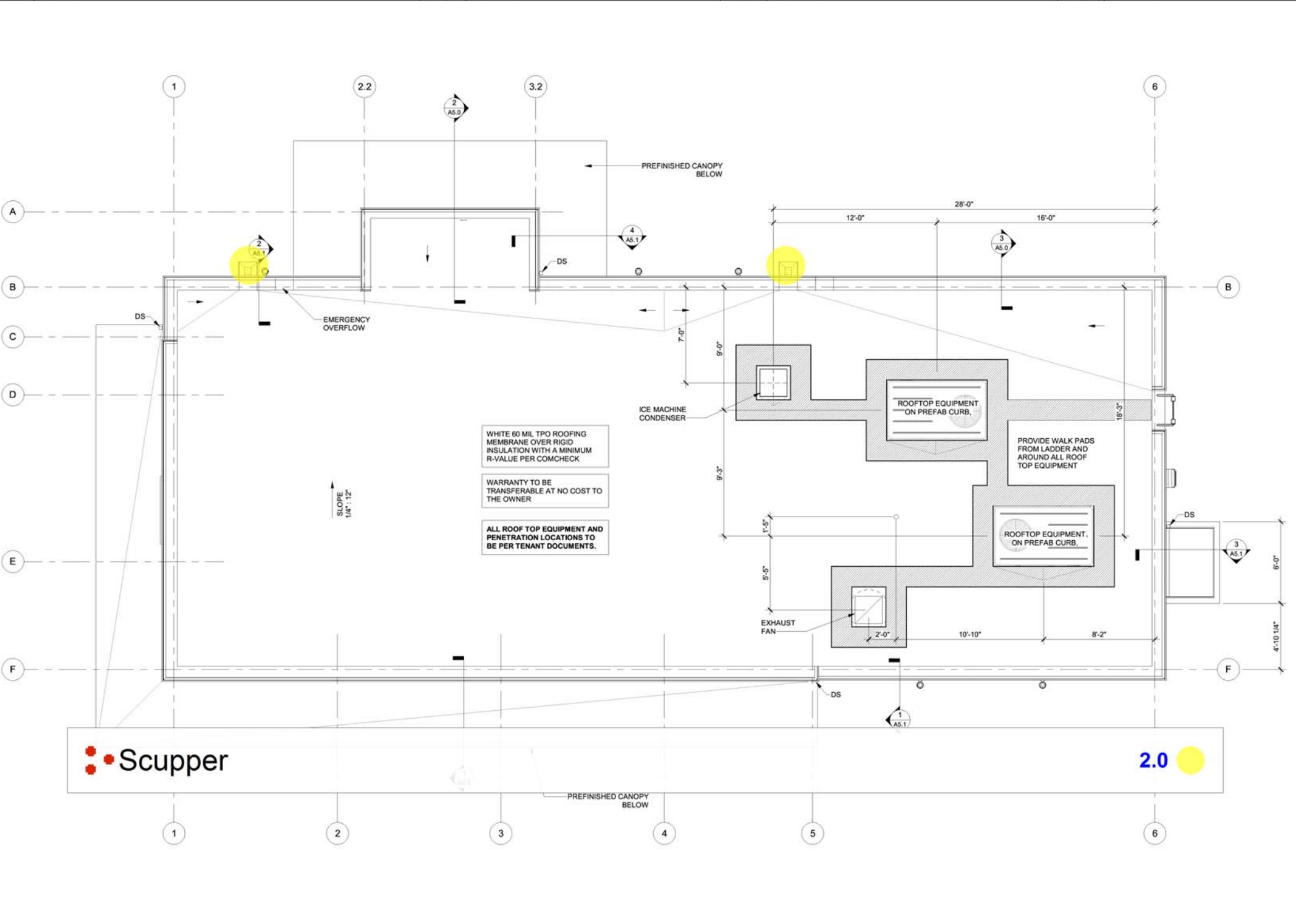
2 HVAC CURB DETAIL
6" = 1'-0"

3 PIPE PENETRATION DETAIL
1/4" = 1'-0"

4 HOT PIPE PENETRATION DETAIL
1/4" = 1'-0"

5 FLEXIBLE PENETRATION
1/4" = 1'-0"

6 SCUPPER & DOWNSPOUT DETAIL
3/4" = 1'-0"



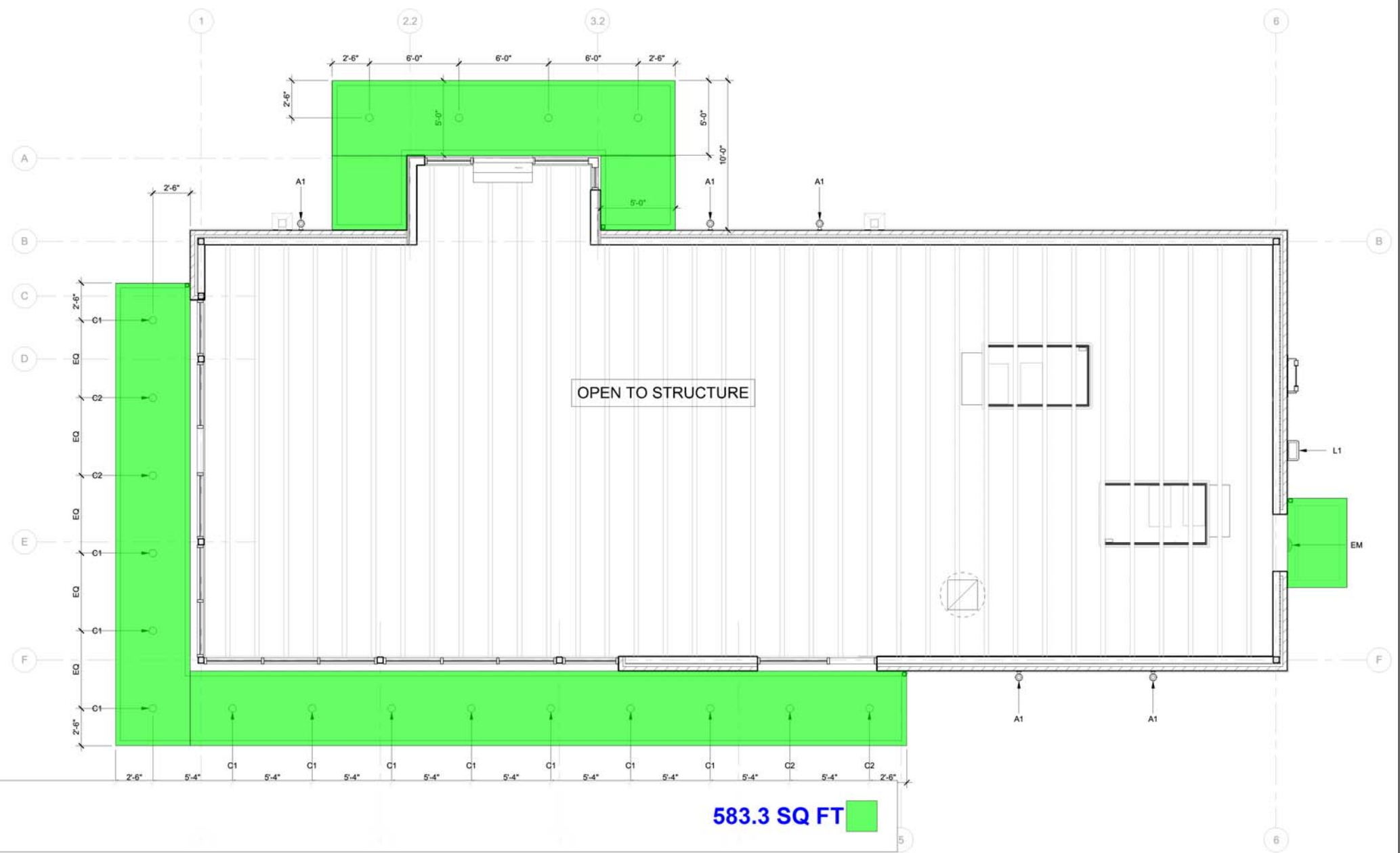
7 OVERFLOW SCUPPER DETAIL
3/4" = 1'-0"

1 ROOF PLAN
1/4" = 1'-0"

C:\Users\stahl\Documents\22120 - Powell - SBUX - R20 - Mk.2 - stahl.rvt



LIGHTING FIXTURE SCHEDULE			
MARK	COUNT	DESCRIPTION	COMMENTS
EM	1	Surface Mounted - Emergency and Always-On	Architectural Emergency Light - Series 2
L1	1	WALL PACK, SEE ELECTRICAL	BLACK FINISH
C2	4	6" CAN LIGHT W/ BATTERY BACK UP, SEE ELECTRICAL	
C1	15	6" CAN LIGHT, SEE ELECTRICAL	
A1	5	UP DOWN WALL SCONCE, SEE ELECTRICAL	BLACK FINISH



Exterior Awning

583.3 SQ FT

1 REFLECTED CEILING PLAN
1/4" = 1'-0"

NO.	REVISION

This drawing and the design shown is the property of the architect. The reproduction, copying or use of this drawing without their written consent is prohibited and any infringement will be subject to legal action.

REFLECTED CEILING PLAN

A2.1

ARCHITECTS

SEAL

NTS

REVISION

SHEET



DOOR SCHEDULE

#	SIZE	DOOR TYPE	DOOR MATERIAL	FRAME TYPE	FRAME MATERIAL	THRESHOLD	HDW #	COMMENTS
101	3'-0" x 7'-0"	1	ALUMINUM & GLASS	D	ALUMINUM	METAL	*	
102	3'-0" x 7'-0"	1	ALUMINUM & GLASS	D	ALUMINUM	METAL	*	
103	3'-6" x 7'-0" x 1'-3/4"	2	HOLLOW CORE METAL	A	HOLLOW METAL	METAL	*	

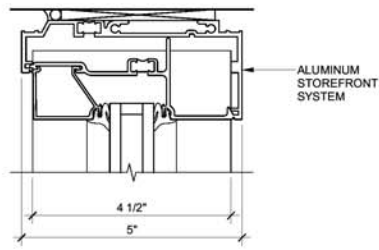
* DOOR HARDWARE PER WORK LETTER ON G2.0

DOOR NOTES

1. MAXIMUM HEIGHT OF THRESHOLDS TO BE 1/2"
2. MAXIMUM OPENING FORCE OF DOORS: INTERIOR: 4.5; EXTERIOR: 4.5
3. ALL HARDWARE TO COMPLY WITH ADA CODES AND STATE ACCESSIBILITY CODES.
4. ALUMINUM STOREFRONT DOOR HARDWARE BY DOOR MANUFACTURER.
5. METAL THRESHOLDS FOR PERIMETER WALL EXIT DOORS SHALL BE ALUMINUM STORMPROOF AND ADA HANDICAP ACCESSIBLE.
6. HOLLOW CORE METAL EXTERIOR DOORS TO MEET OR EXCEED A U-FACTOR OF .18. DOOR TO BE LABELED AND CERTIFIED BY MANUFACTURER FOR U-FACTOR.
7. ALUMINUM & GLASS DOORS TO MEET U-FACTOR AND SHGC REQUIREMENTS AS NEEDED TO PROVIDE THE SYSTEM VALUE SPECIFIED IN STOREFRONT NOTES THIS SHEET.
8. THE BOTTOM 10" OF ALL DOORS SHALL HAVE A SMOOTH, UNINTERRUPTED SURFACE TO ALLOW THE DOOR TO BE OPENED BY A WHEELCHAIR FOOTREST WITHOUT CREATING A TRAP OR HAZARDOUS CONDITION

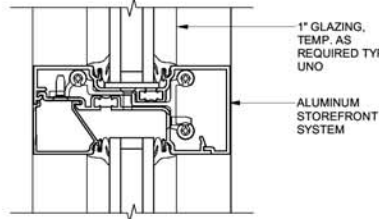
STOREFRONT NOTES:

1. ALL STOREFRONT DOORS TO BE TEMPERED 1" GLAZING.
2. ALL STOREFRONT SYSTEM GLAZING TO BE 1" GLAZING.
3. ALL GLAZING TO BE TEMPERED, AS REQ'D.
4. STOREFRONT SYSTEM FINISH TO BE BLACK.
5. STOREFRONT SYSTEM (INCLUDING DOORS & GLAZING) TO MEET OR EXCEED SOLARBAN 60 OR SIM.
6. SYSTEM TO BE LABELED AND CERTIFIED BY MANUFACTURER FOR U-FACTOR AND SHGC.



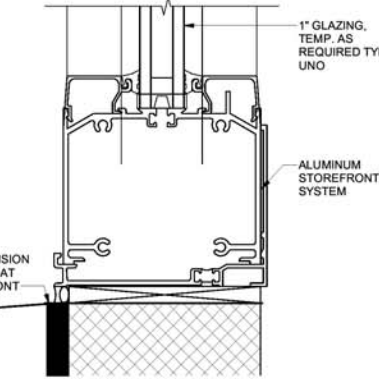
C1 HEAD DETAIL

6" = 1'-0"



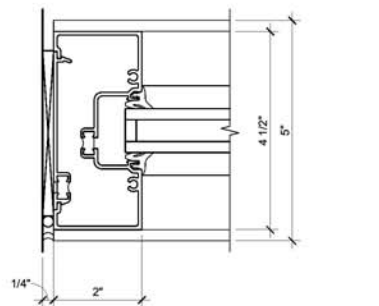
C2 HORIZONTAL MULLION DETAIL

6" = 1'-0"



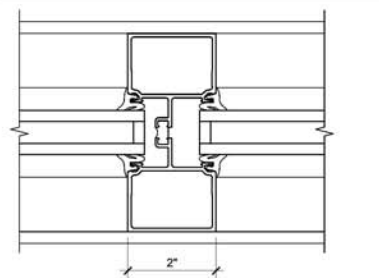
C3 SILL DETAIL

6" = 1'-0"



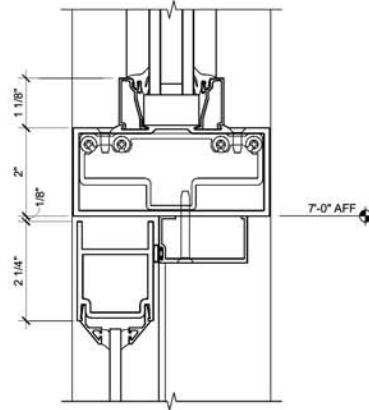
C4 JAMB DETAIL

6" = 1'-0"



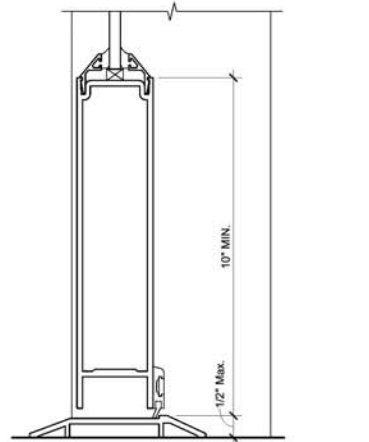
C5 VERTICAL MULLION DETAIL

6" = 1'-0"



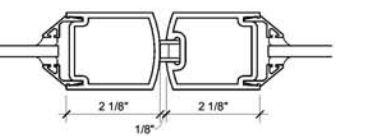
D1 DOOR HEAD

6" = 1'-0"



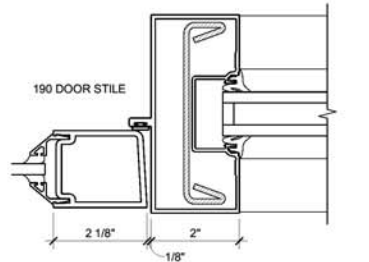
D2 DOOR SILL

6" = 1'-0"



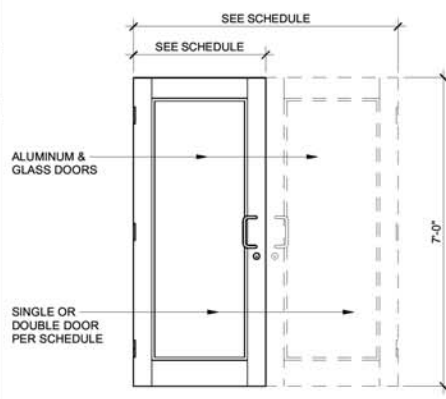
D3 MEETING STILES

6" = 1'-0"



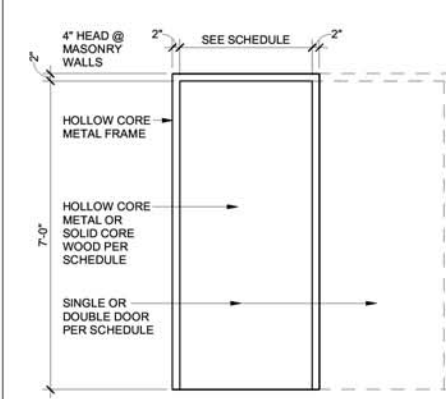
D4 DOOR JAMB

6" = 1'-0"



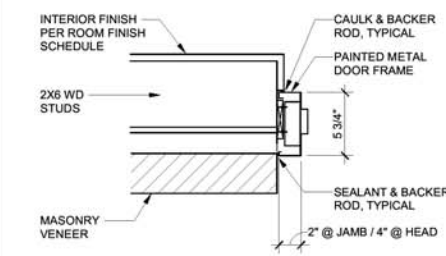
DT1 DOOR TYPE 1

1 1/2" = 1'-0"



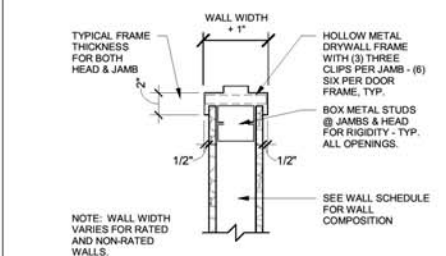
DT2 DOOR TYPE 2

1 1/2" = 1'-0"



A FRAME TYPE

1 1/2" = 1'-0"



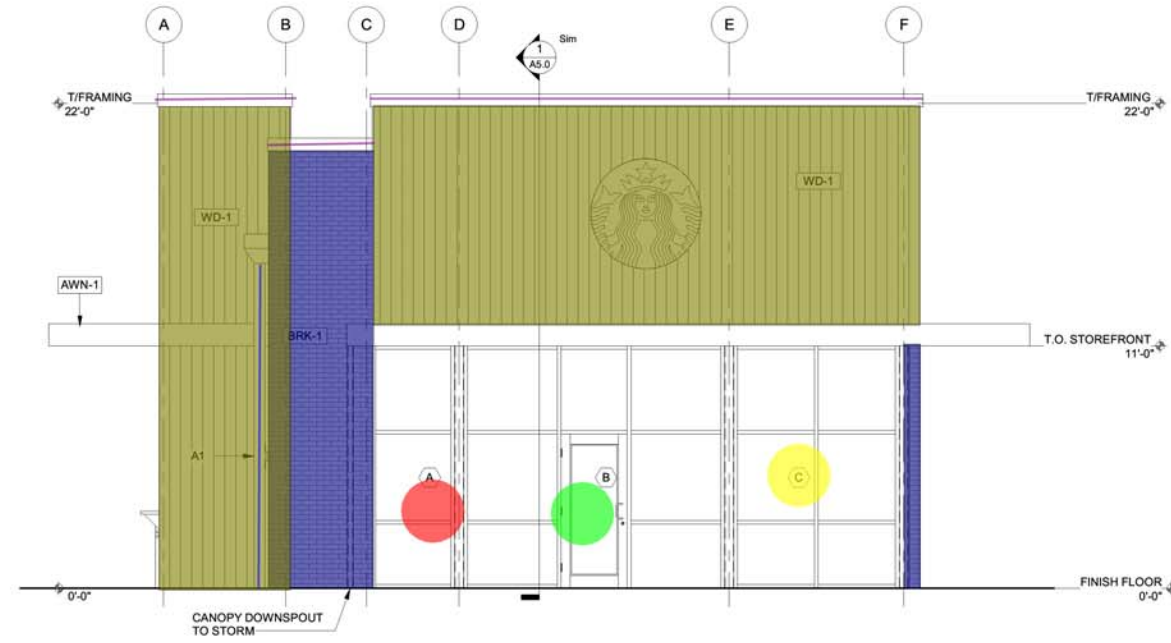
B FRAME TYPE

1 1/2" = 1'-0"

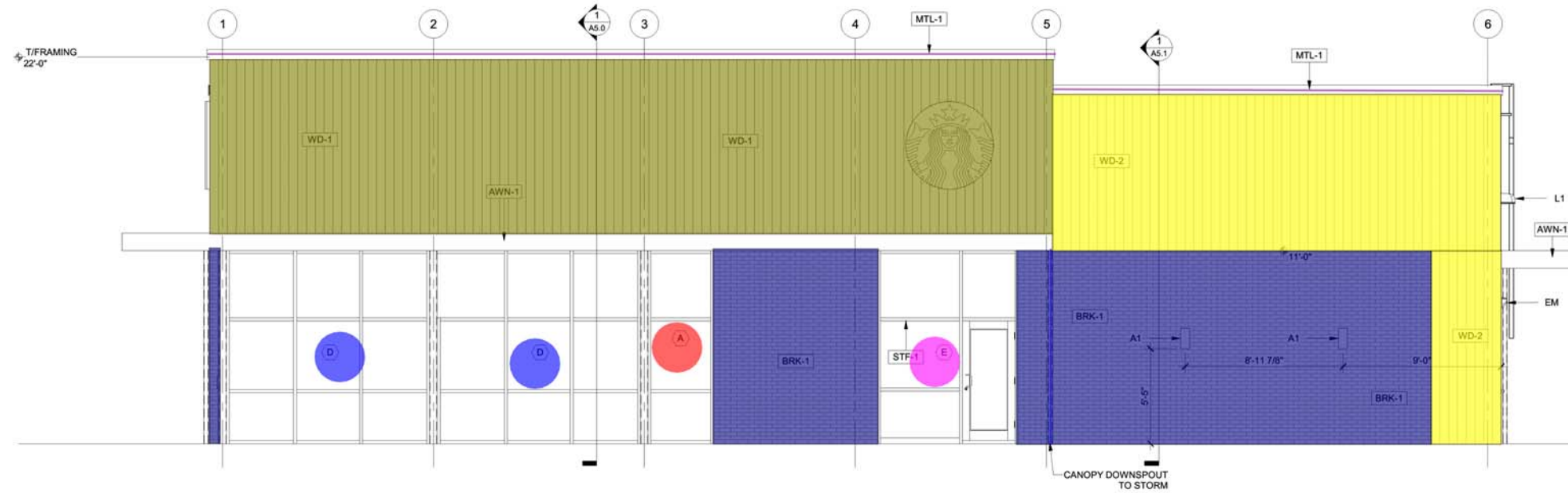
This drawing and the design shown is the property of the architect. The reproduction, copying or use of this drawing without their written consent is prohibited and any infringement will be subject to legal action.

DOOR SCHEDULE AND DETAILS

A3.0



1 FRONT ELEVATION (WEST)
 1/4" = 1'-0"



3 SIDE ELEVATION A (SOUTH)
 1/4" = 1'-0"

EXTERIOR FINISH SCHEDULE				
MARK	MATERIAL	MANUFACTURER	COLOR	REMARKS
AWN-1	PREFINISHED METAL CANOPY	AWNEX	MATTE BLACK	COLORADO CANOPY NO TIE BACKS
BRK-1	BRICK VENEER	GLEN-GERY	WD77 DARK GRAY	RUNNING BOND MORTAR: SM770 SABLE
DS	PREFINISHED METAL COPING	TBD	MATTE BLACK	
DSP-1	PREFINISHED DOWNSPOUT AND SCUPPER	TBD	MATTE BLACK	
MTL-1	PREFINISHED METAL FASCIA GUARD	TBD	MATTE BLACK	
STF-1	ALUMINUM & GLASS STOREFRONT FRAME	KAWNEER OR EQUAL	MATTE BLACK	
WD-1	WOOD CLADDING	IDENTITY WOOD PRODUCTS	1204 - EXTRA CRISP	1/16" REVEAL SANDBLAST TEXTURE
WD-2	WOOD CLADDING	IDENTITY WOOD PRODUCTS	DARK WALNUT	1/16" REVEAL SANDBLAST TEXTURE

This drawing and the design shown is the property of the architect. The reproduction, copying or use of this drawing without their written consent is prohibited and any infringement will be subject to legal action.

ELEVATIONS

A4.0

ARCHITECTS

SEAL

CONSULTANTS

OWNER

LOCATION

DATE

REVISIONS

SHEET



SEAL

CONSULTANTS

OWNER

LOCATION

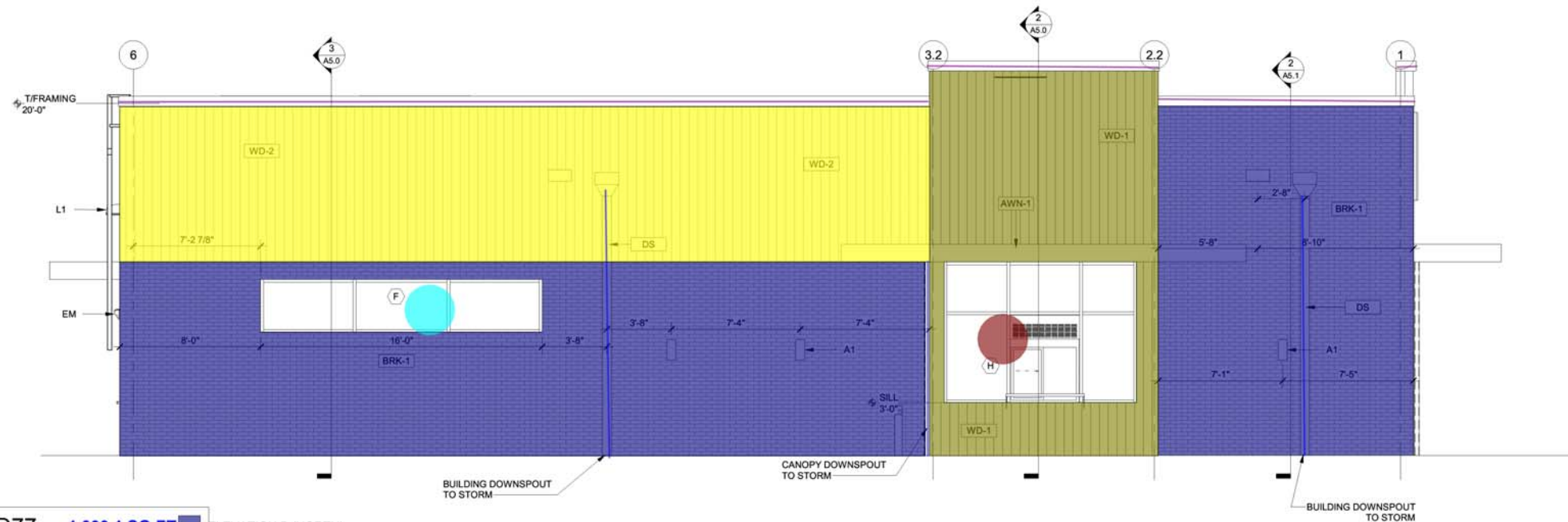
DATE

REVISIONS

SHEET



1 REAR ELEVATION (EAST)
 1/4" = 1'-0"



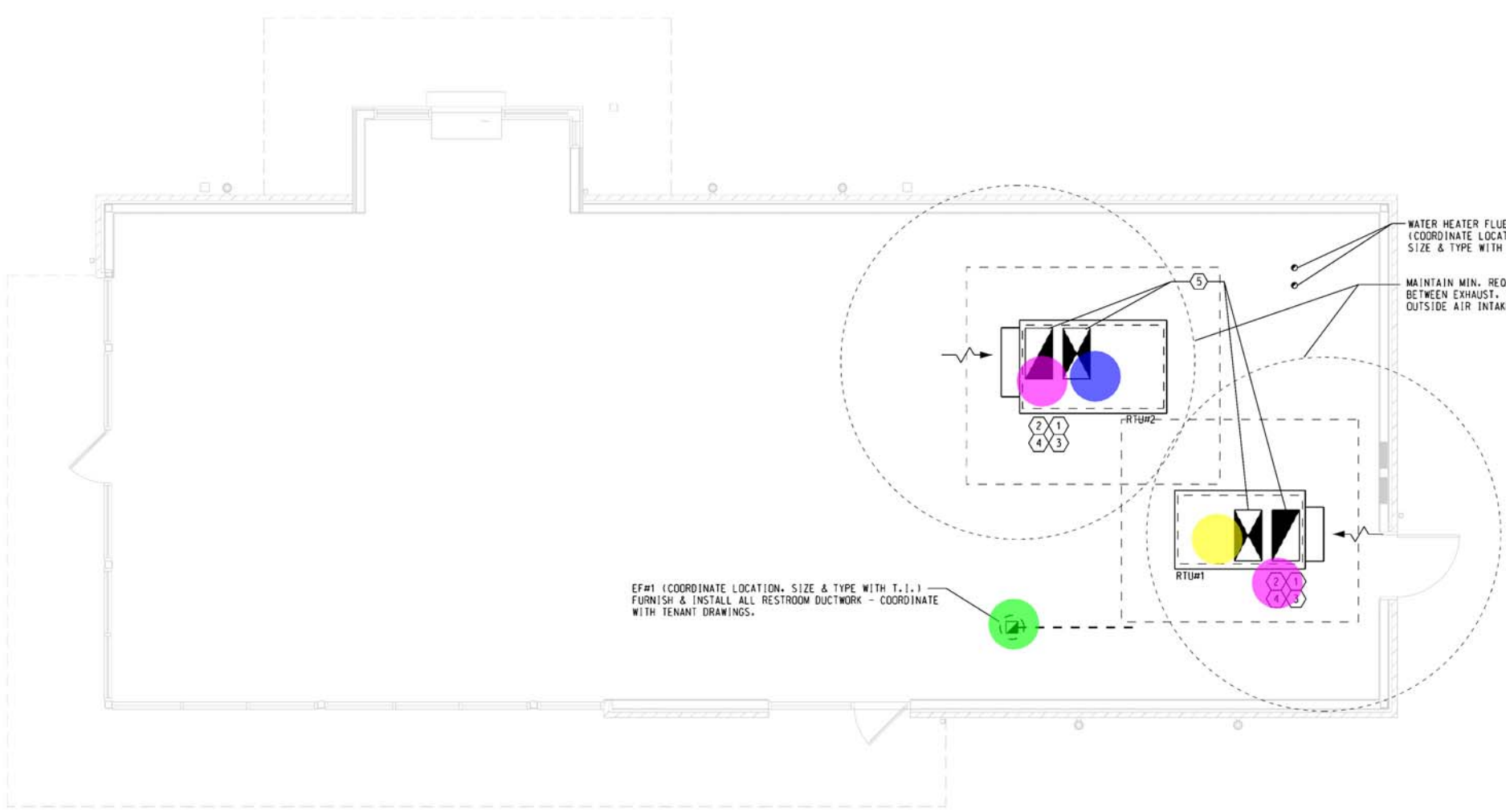
ELEVATION B (NORTH)
 1'-0"

- BRK-1 - Brick Veneer - Glen-Grey - WD77 ... 1,000.1 SQ FT
- Storefront "F" 1.0
- Storefront "H" 1.0
- Storefront "G" 1.0
- WD-1 - Wood Cladding - Identity Wood Proj... 313.0 SQ FT
- WD-2 - Wood Cladding - Identity Wood Proj... 714.0 SQ FT
- Pre- Finished Metal Fascia Guard 110.7 FT
- Metal Exterior Ladder (14'6"h) 1.0
- Downspout 56.0 FT

EXTERIOR FINISH SCHEDULE				
MARK	MATERIAL	MANUFACTURER	COLOR	REMARKS
AWN-1	PREFINISHED METAL CANOPY	AWNEX	MATTE BLACK	COLORADO CANOPY NO TIE BACKS
BRK-1	BRICK VENEER	GLEN-GERY	WD77 DARK GRAY	RUNNING BOND MORTAR: SM770 SABLE
DS	PREFINISHED METAL COPING	TBD	MATTE BLACK	
DSP-1	PREFINISHED DOWNSPOUT AND SCUPPER	TBD	MATTE BLACK	
MTL-1	PREFINISHE METAL FASCIA GUARD	TBD	MATTE BLACK	
STF-1	ALUMINUM & GLASS STOREFRONT FRAME	KAWNEER OR EQUAL	MATTE BLACK	
WD-1	WOOD CLADDING	IDENTITY WOOD PRODUCTS	1204 - EXTRA CRISP	1/16" REVEAL. SANDBLAST TEXTURE
WD-2	WOOD CLADDING	IDENTITY WOOD PRODUCTS	DARK WALNUT	1/16" REVEAL. SANDBLAST TEXTURE

ELEVATIONS

A4.1



H.V.A.C. FLOOR PLAN
1/8" = 1'-0"

• EF-1	1.0	●
• RTU-1	1.0	●
• RTU-2	1.0	●
• DUCT MTD SMOKE DETECTOR	2.0	●

- GENERAL HVAC NOTES:**
- COORDINATE DUCTWORK WITH ALL TRADES PRIOR TO FABRICATION. SUBMIT ANY MAJOR CHANGES IN DUCT ROUTING OR DUCT SIZING AS A SHOP DRAWING TO THE ARCHITECT/ENGINEER FOR REVIEW.
 - COORDINATE CEILING AIR INLETS AND OUTLETS WITH REFLECTED CEILING PLAN. DO NOT LOCATE ANY AIR OUTLETS WITHIN 3 FEET OF CEILING SMOKE DETECTORS.
 - MAINTAIN CLEARANCES FROM ELECTRICAL PANELS AS REQUIRED BY N.E.C.
 - MAINTAIN CLEARANCES FOR SERVICE OF HVAC EQUIPMENT AS REQUIRED BY MANUFACTURER AND NEC 110.26. PROVIDE MECHANICAL ROOM SHOP DRAWINGS AS REQUIRED FOR COORDINATION.
 - REFERENCE CONTROL SCHEMATICS & DUCTWORK DETAILS FOR MANUAL AND AUTOMATIC DAMPER LOCATIONS.
 - HVAC SYSTEMS SHALL BE TESTED, ADJUSTED AND BALANCED UPON INSTALLATION BY EITHER AN AABC OR NEBB CERTIFIED TAB CONTRACTOR. REPORT SHALL BE IN ACCORDANCE WITH AABC STANDARDS AND INCLUDE SUPPLY, RETURN, OUTSIDE AIR AND EXHAUST AIR QUANTITIES BALANCED TO WITHIN 10% OF DESIGN CONDITIONS AS INDICATED ON THE DRAWINGS, AND HEATING AND COOLING COIL ENTERING AND LEAVING TEMPERATURES. ONE COPY OF THE REPORT SHALL BE RETAINED AT THE SITE AND SHALL BE AVAILABLE TO THE LOCAL CODE AUTHORITY UPON REQUEST.
 - ALL HVAC EQUIPMENT OPERATING AND MAINTENANCE MANUALS SHALL BE PRESENTED TO THE OWNER AND SHALL BE MADE AVAILABLE TO THE LOCAL CODE AUTHORITY UPON REQUEST.
- HVAC PLAN NOTES:**
- FINAL RTU SELECTION AND LOCATION TO BE COORDINATED WITH THE TENANT & STRUCTURAL DRAWINGS. SEE TENANT DRAWINGS FOR DETAILS. UNITS SHALL BE TESTED AND OPERABLE AND A MINIMUM ONE-YEAR MFG WARRANTY SHALL BE SUPPLIED/TRANSFERRED TO TENANT.
 - PROVIDE MIN. 150 FEET OF THERMOSTAT WIRING COILED AND ATTACHED TO PLENUM FOR MOUNTING BY TENANT CONTRACTOR. T-STAT SHALL BE WIRED TO UNIT.
 - PROVIDE NECESSARY RTU FAN ADJUSTMENTS FOR TENANTS T.A.B. REPORT.
 - PROVIDE UNIT WITH DUCT MOUNTED SMOKE DETECTOR MOUNTED IN THE RETURN AIR DUCT FOR UNIT SHUTDOWN.
 - STUB SUPPLY AND RETURN DUCT THROUGH ROOF 36" BELOW CEILING. UNIT CONNECTION SIZE FOR FUTURE CONNECTION BY TENANT PLANS.



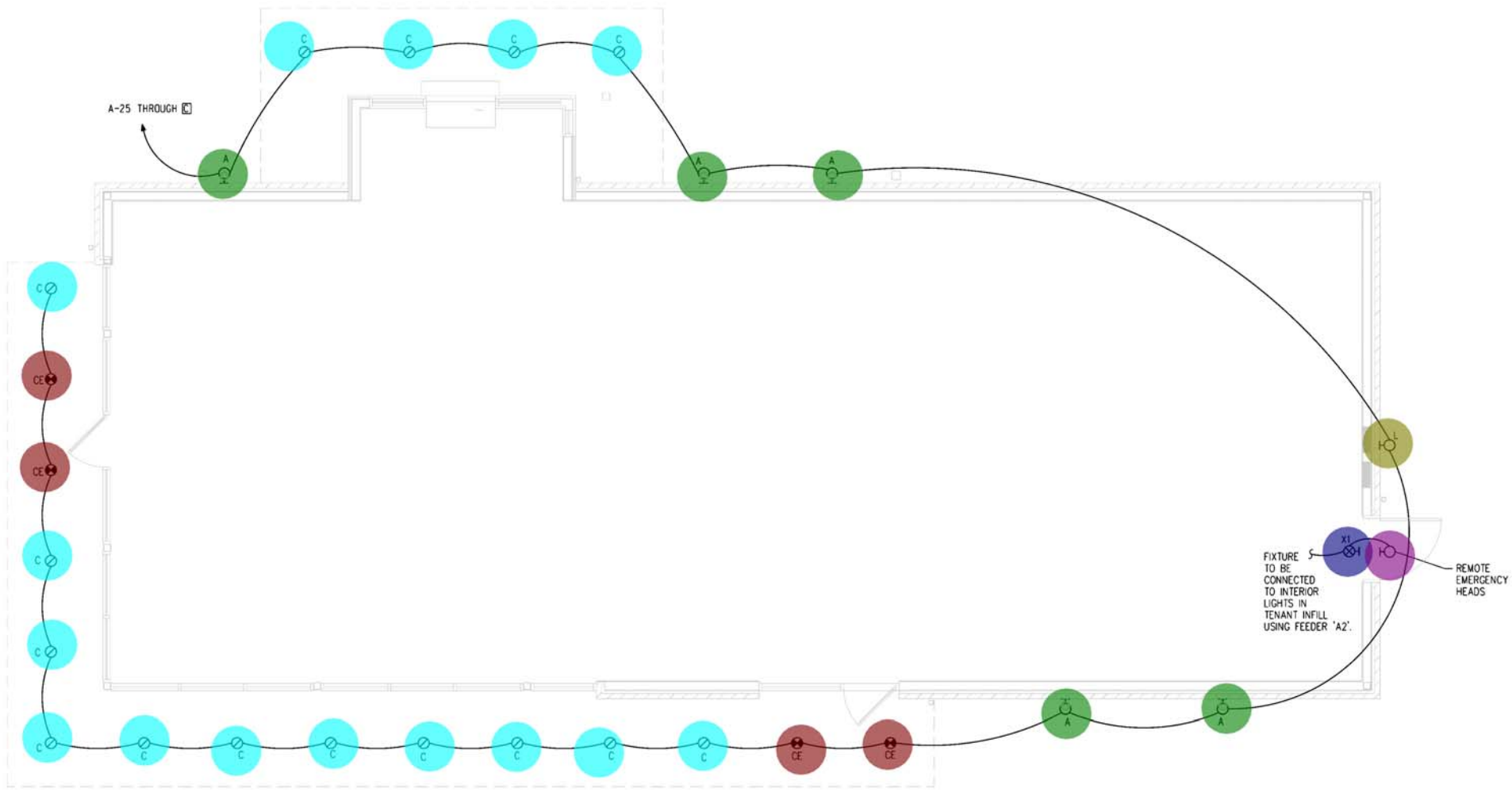
ARCHITECTURE 2948 SIDCO DRIVE
NASHVILLE, TN 37204
PLANNING (615) 244.8170
ENGINEERING (615) 244.8141
GRAPHICS www.mjmarch.com



SEAL
CONSULTANTS
OWNER
LOCATION
DATE
REVISIONS

This drawing and the design shown is the property of the architect. The reproduction, copying or use of this drawing without their written consent is prohibited and any infringement will be subject to legal action.

HVAC FLOOR PLAN
M2.1



- GENERAL NOTES:**
- A. ALL EXITS AND EMERGENCY BATTERY PACKS ARE TO BE UNSWITCHED.
 - B. EC TO FIELD VERIFY ALL EXISTING CONDITIONS PRIOR TO BID AND PRIOR TO ORDERING EQUIPMENT.
 - C. EC TO COORDINATE ALL WORK WITH ALL TRADES.
 - D. REFER TO ARCHITECT'S EXTERIOR ELEVATIONS FOR EXACT LOCATIONS OF ALL FIXTURES.
 - E. ADDITIONAL EXIT SIGNAGE AND EMERGENCY LIGHTING WILL BE PROVIDED DURING FUTURE TENANT BUILD OUT BASED ON THE INTERIOR LAYOUT DESIGN.

LIGHTING FLOOR PLAN
 1/8" = 1'-0"

• C - LED	15.0	
• CE - LED	4.0	
• A - LED	5.0	
• L - LED	1.0	
• X1 - LED	1.0	
• Remote Emergency HEad	1.0	



ARCHITECTURE 2948 SIDCO DRIVE
 NASHVILLE, TN 37204
 PLANNING (615) 244.8170
 ENGINEERING (615) 244.8141
 GRAPHICS www.mmarch.com



REVISIONS

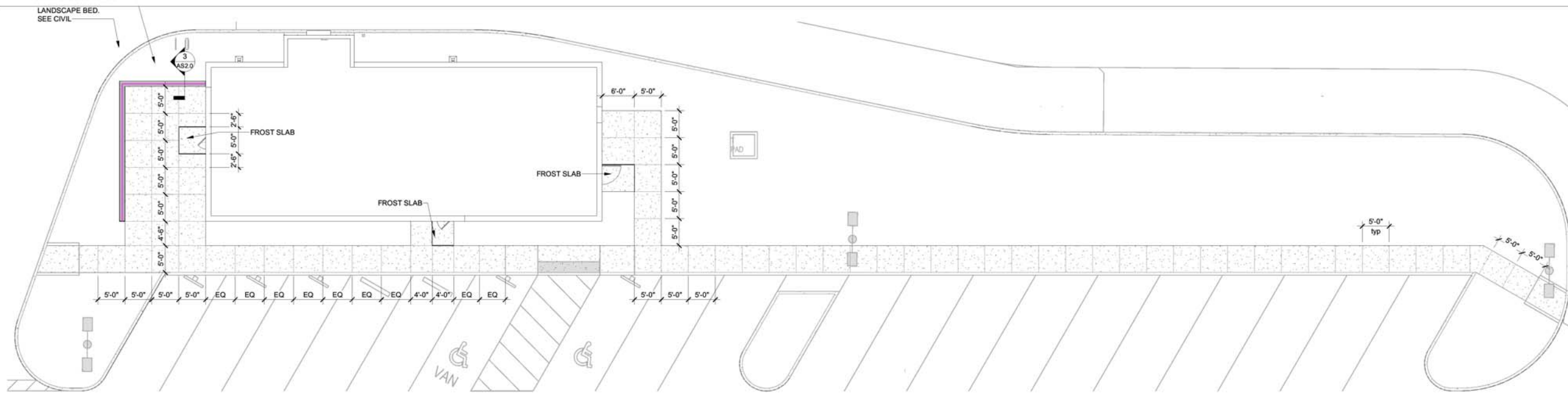
DATE LOCATION OWNER

This drawing and the design shown is the property of the architect. The reproduction, copying or use of this drawing without their written consent is prohibited and any infringement will be subject to legal action.

LIGHTING PLAN
E1.0

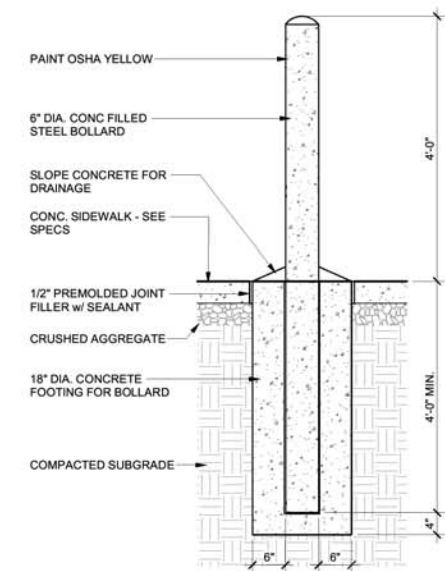
(12"Wx24"H) CONCRETE SEAT WALL

41.0 FT



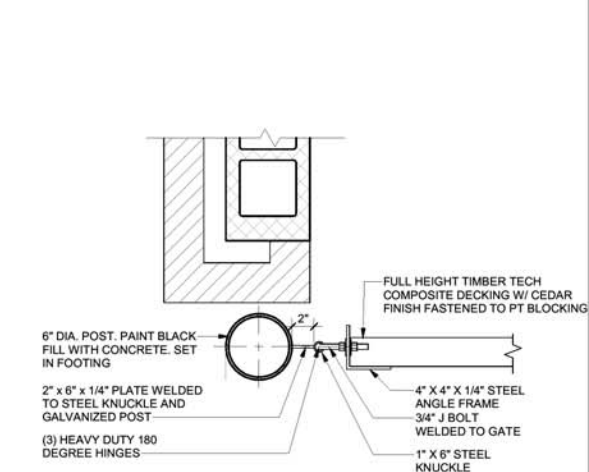
1 SIDEWALK PLAN

1" = 10'-0"



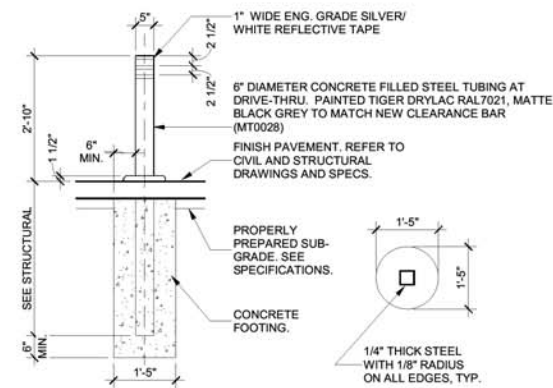
6 BOLLARD 01 DETAIL

3/4" = 1'-0"



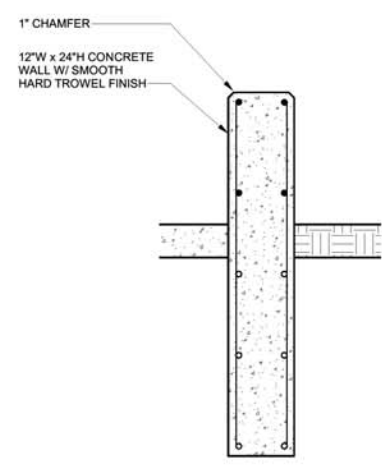
4 ENCLOSURE GATE HINGE

1 1/2" = 1'-0"



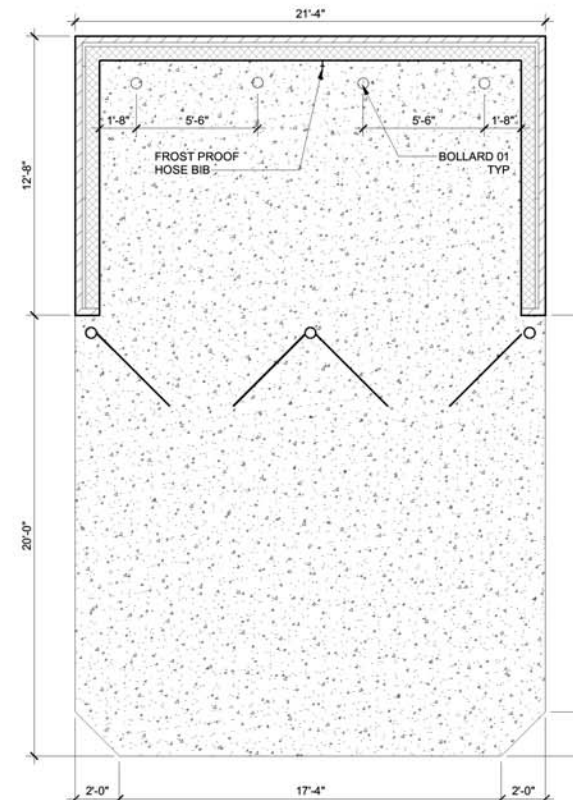
5 NON-ILLUMINATED - BOLLARD 02

1/2" = 1'-0"



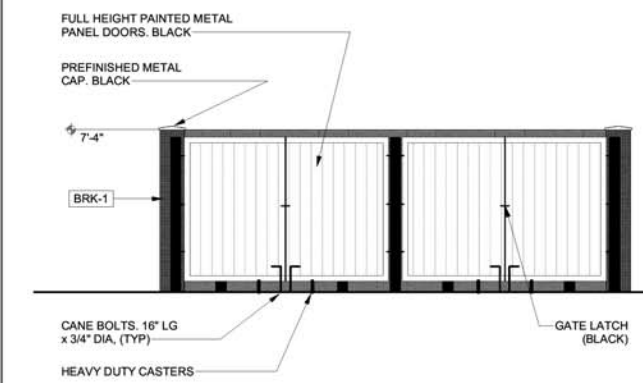
3 SEAT WALL

3/4" = 1'-0"



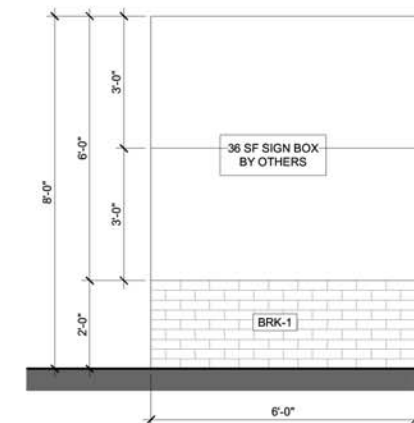
2 TRASH ENCLOSURE

1/4" = 1'-0"



7 TRASH ENCLOSURE

1/4" = 1'-0"



8 MONUMENT SIGN

1/2" = 1'-0"



ARCHITECTURE 2948 SIDCO DRIVE
PLANNING NASHVILLE, TN 37204
ENGINEERING (615) 244-8170
GRAPHICS (615) 244-8141
www.mjmarch.com



CONSULTANTS SEAL

OWNER

LOCATION

DATE

REVISIONS

SHEET

SITE DETAILS
AS2.0

C:\Users\stahl\Documents\22120 - Powell - SBLUX - R20 - Mk.2 - stahl.rvt

- (2x6) PWD EXTERIOR WALL (3'H)
- (2x6) PWD EXTERIOR WALL (4'8"H)
- (2x6) PWD EXTERIOR WALL (8'6"H)
- (2x6) PWD EXTERIOR WALL (13'6"H)
- (2x4) PWD EXTERIOR FURRING WALL (9'H)
- (2x4) PWD EXTERIOR FURRING WALL (11'H)
- (2x6) PARAPET WALL (4'10"H)
- (2x6) PARAPET WALL (6'3"H)
- (2x6) PARAPET WALL (7'H)

- 10.9 FT
- 63.1 FT
- 11.8 FT
- 135.8 FT
- 88.0 FT
- 52.2 FT
- 135.8 FT
- 52.2 FT
- 22.8 FT



ARCHITECTURE 2948 SIDCO DRIVE
 PLANNING NASHVILLE, TN 37204
 ENGINEERING (615) 244-8170
 GRAPHICS (615) 244-8141
 www.mjnarch.com



CONSULTANTS SEAL

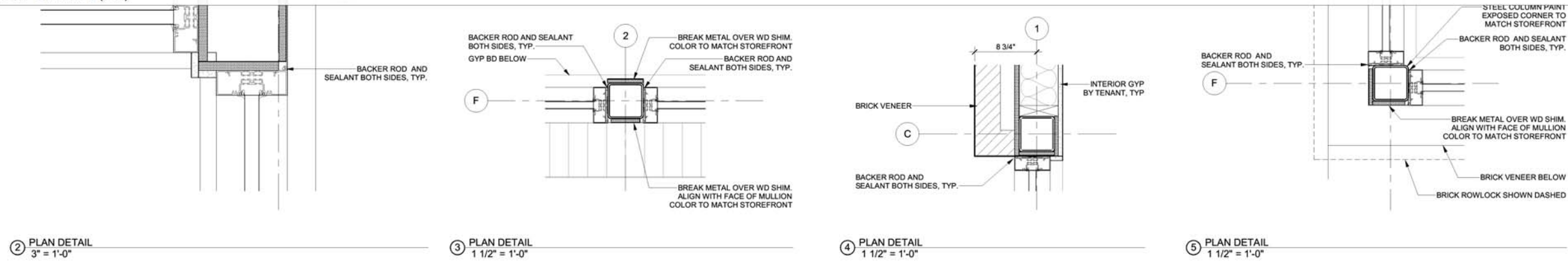
OWNER

LOCATION

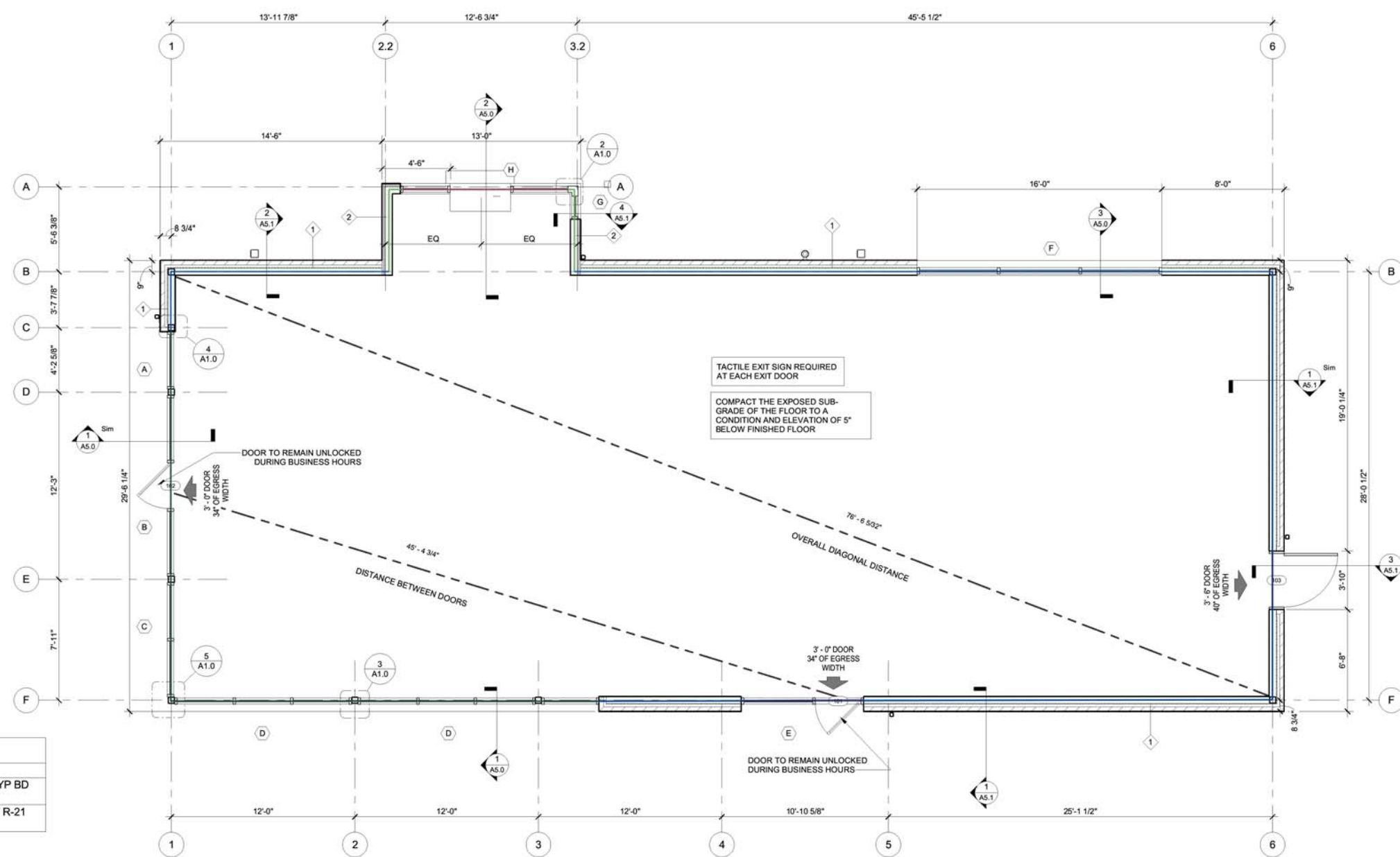
DATE

REVISIONS

SHEET



2 PLAN DETAIL 3" = 1'-0"
 3 PLAN DETAIL 1 1/2" = 1'-0"
 4 PLAN DETAIL 1 1/2" = 1'-0"
 5 PLAN DETAIL 1 1/2" = 1'-0"



1 FLOOR PLAN 1/4" = 1'-0"

ROOM FINISH SCHEDULE				
MARK	NAME	FLOOR FINISH	WALL FINISH	CEILING FINISH
100	RESTAURANT	NA	2x6 WD STUD W/ MIN R-19 BATT INSULATION. 5/8" GYP BY TENANT	OPEN TO STRUCTURE

WALL SCHEDULE	
#	DESCRIPTION
1	BRICK VENEER OVER WD SHEATHING AND 2X6 WD STUDS W/ R-21 BATT INSULATION. 5/8" GYP BD BY TENANT
2	VERTICAL WOOD SIDING ON FURRING STRIPS OVER WD SHEATHING AND 2X6 WD STUDS W/ R-21 BATT INSULATION. 5/8" GYP BD BY TENANT

This drawing and the design shown is the property of the architect. The reproduction, copying or use of this drawing without their written consent is prohibited and any infringement will be subject to legal action.

FLOOR PLAN

A1.0

C:\Users\stahl\Documents\22120 - Powell - SBLUX - R20 - Mk.2 - stahl.rvt



ARCHITECTS

CONSULTANTS SEAL

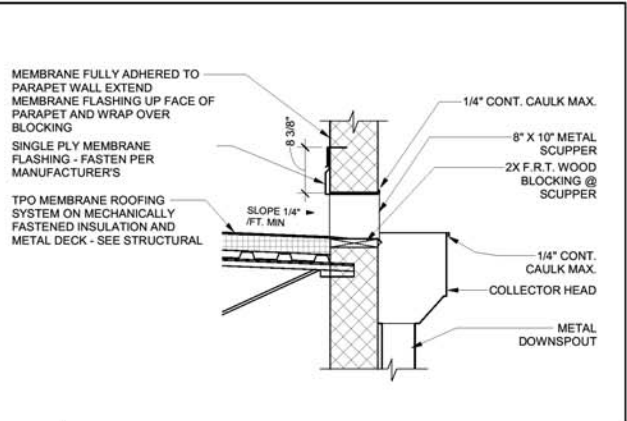
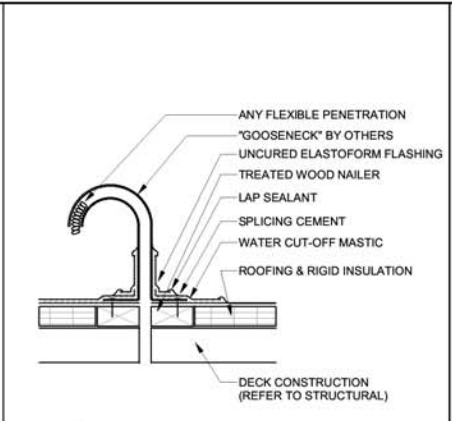
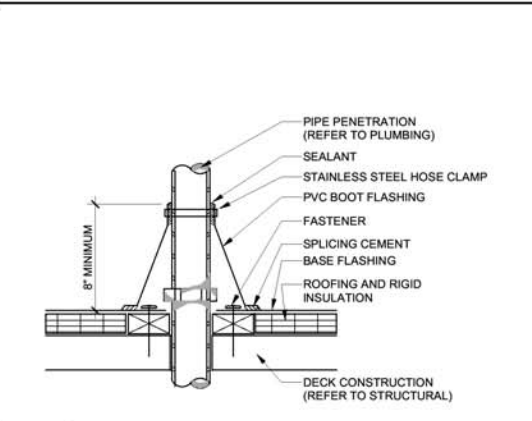
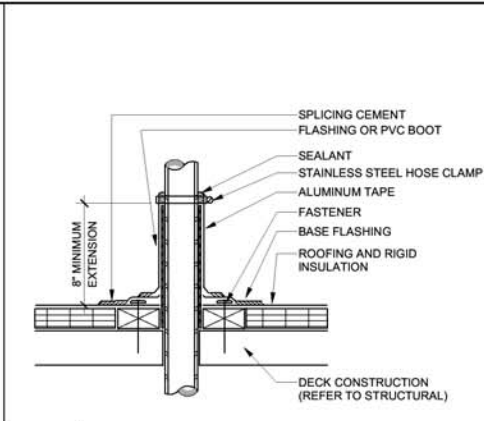
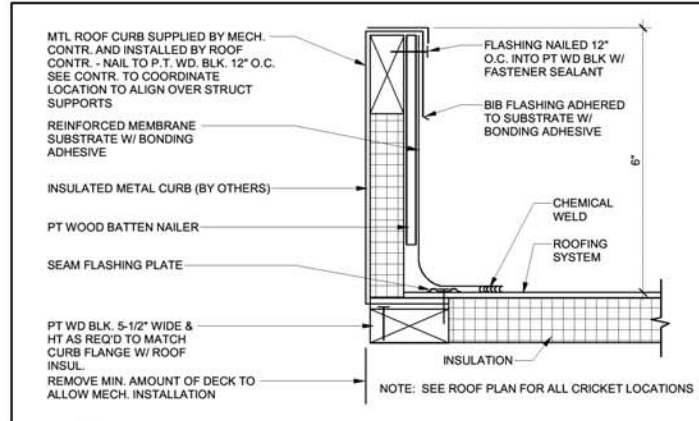
OWNER

LOCATION

DATE

REVISIONS

SHEET



2 HVAC CURB DETAIL

Ref. Sheet 6" = 1'-0"

3 PIPE PENETRATION DETAIL

Ref. Sheet 1/4" = 1'-0"

4 HOT PIPE PENETRATION DETAIL

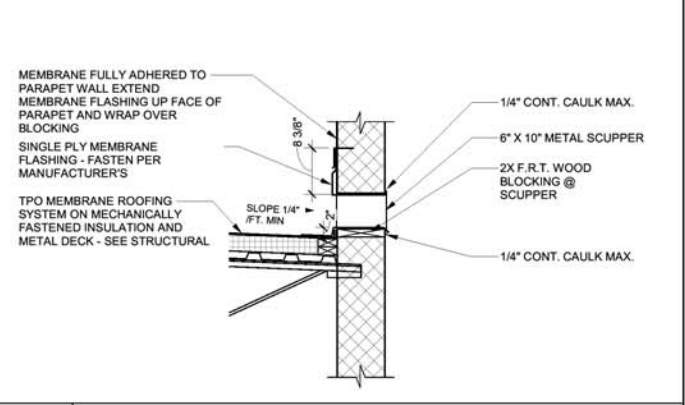
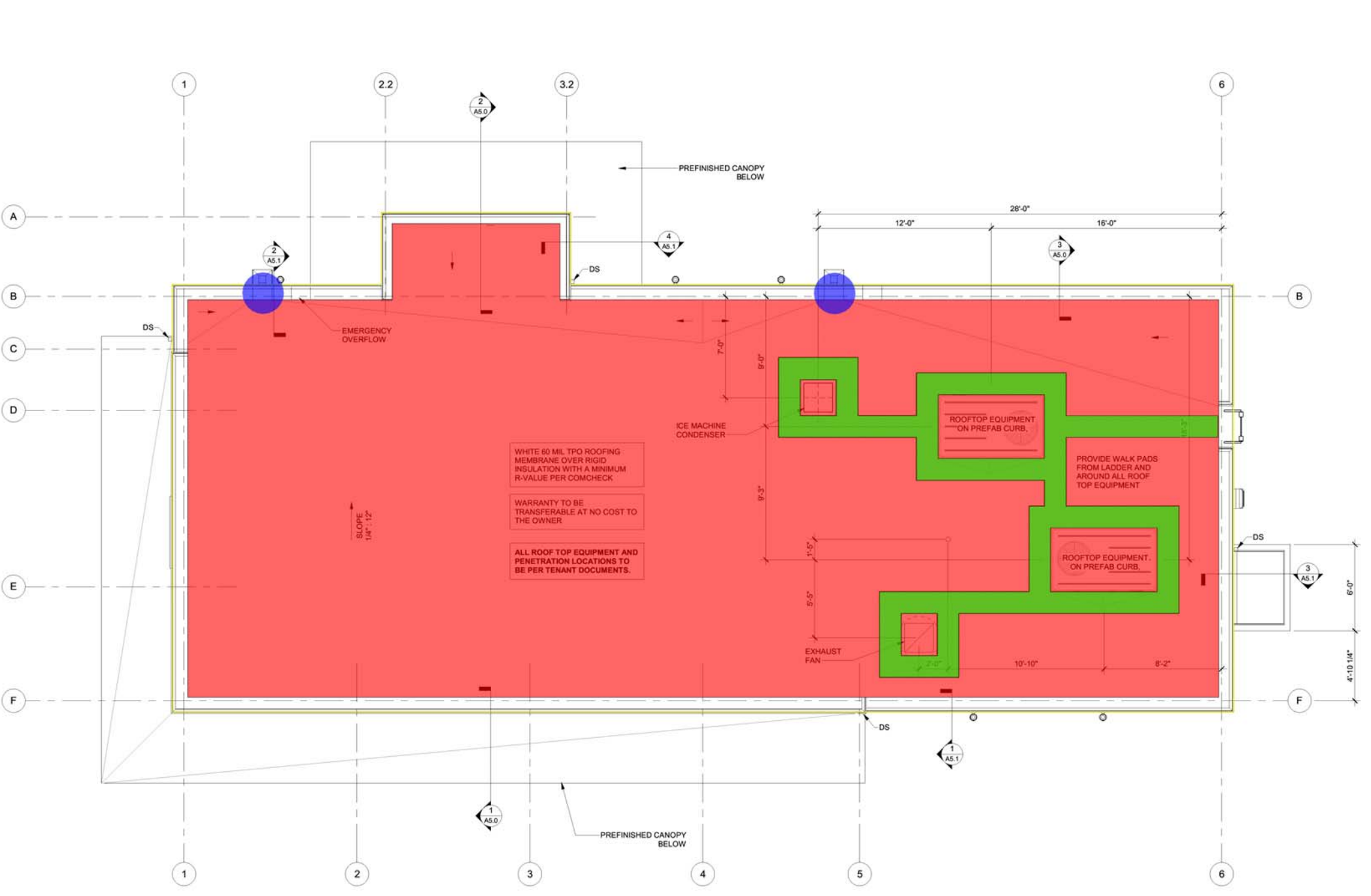
Ref. Sheet 1/4" = 1'-0"

5 FLEXIBLE PENETRATION

Ref. Sheet 1/4" = 1'-0"

6 SCUPPER & DOWNSPOUT DETAIL

Ref. Sheet 3/4" = 1'-0"



7 OVERFLOW SCUPPER DETAIL

Ref. Sheet 3/4" = 1'-0"

- (60 MIL) TPO ROOFING
- WALK PAD
- (7") PREFINISHED METAL EDGE GUARD
- (2x6) FRT WOOD BLOCKING

2,032.4 SQ FT
 170.5 SQ FT
 216.4 FT
 2.0

ROOF PLAN

A2.0

C:\Users\stahl\Documents\22120 - Powell - SBUX - R20 - Mk.2 - stahl.rvt



SEAL

CONSULTANTS

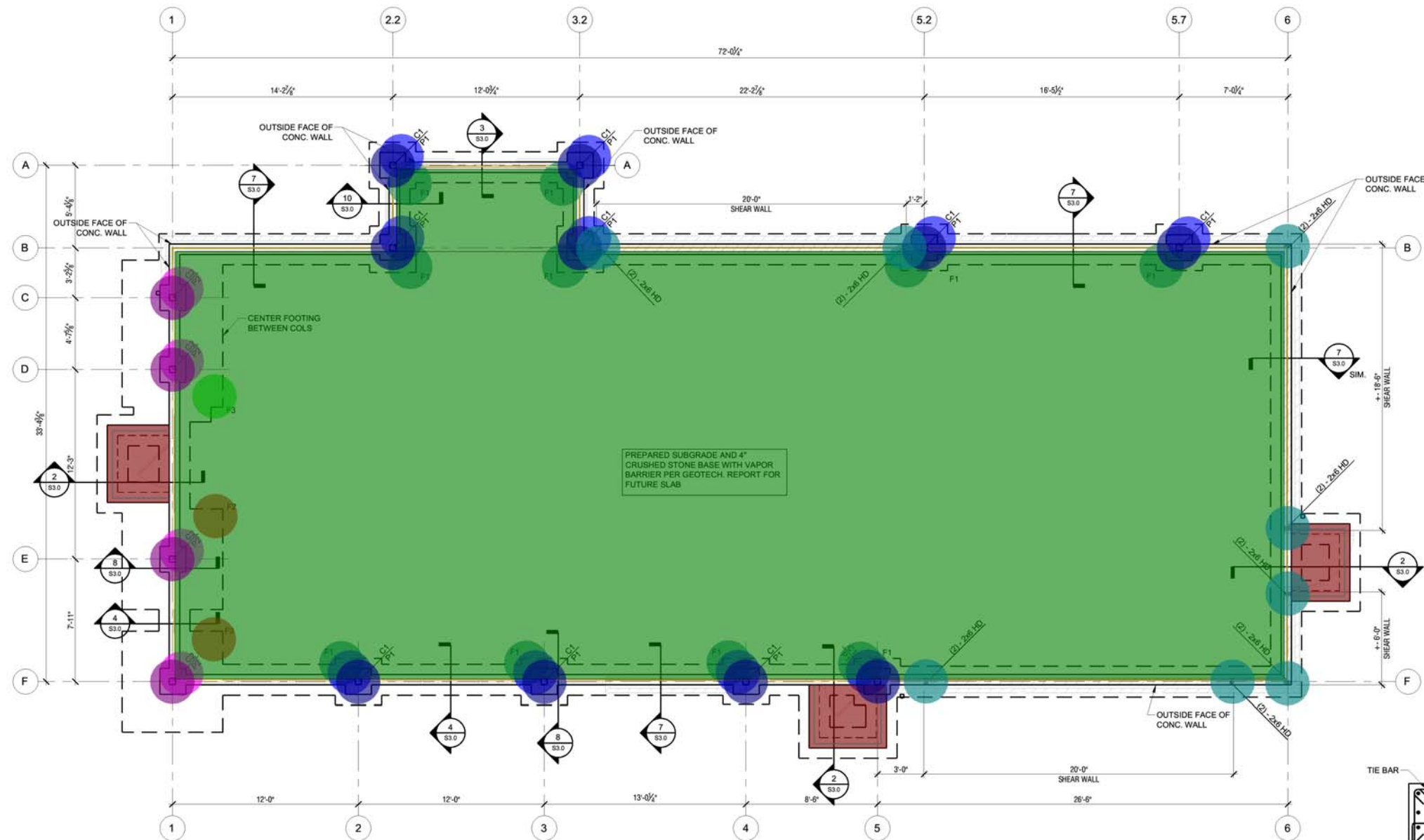
OWNER

LOCATION

DATE

REVISIONS

SHEET



FOOTING SCHEDULE			
MARK	FOOTING SIZE	REINFORCING	T/ FTG. ELEV.
F1	3'-0"x3'-0"x1'-0"	#5 @ 12" EACH WAY, T&B	-2'-8"
F2	6'-6"x6'-6"x1'-0"	#5 @ 12" EACH WAY, T&B	-2'-8"
F3	9'-6"x6'-6"x1'-0"	(8) - #5 BARS LONG WAY, T&B (11) - #5 BARS SHORT WAY, T&B	-2'-8"

NOTE: CENTER ALL COLUMN FOOTINGS ABOUT COLUMN CENTERLINES, (U.N.O.).

FOUNDATION PLAN

SCALE: 1/4" = 1'-0"



PEDESTAL SCHEDULE			
MARK	SIZE	REINFORCING	T/ PEDESTAL ELEV.
P1	20" x 20"	(12) - #6 VERT. w/#3 TIES	-0'-8"
P2	20" x 20"	(12) - #6 VERT. w/#3 TIES	-0'-8"

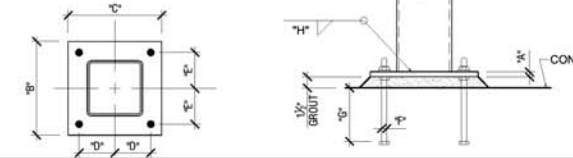
NOTE: SPACE ALL TIES AT 8" O.C. TOP 4 TIE LAYERS ARE SPACED @ 2" O.C. CENTER PEDESTALS ON FOOTINGS/COLUMNS. AT P2, PROVIDE STD. 180 DEG. HOOKS AT TOP OF #6 VERT. BARS IN PEDESTAL.

FOUNDATION NOTES:

- T/ EXTERIOR FOOTINGS = (-2'-8"), UNLESS NOTED OTHERWISE. BOTTOM OF ALL EXTERIOR FOOTINGS SHALL BEAR AT A MINIMUM OF 3'-0" BELOW FINISHED GRADE. BEARING ELEVATION MUST BE VERIFIED IN THE FIELD BASED ON SITE GRADING PLAN. (COORDINATE WITH CIVIL).
- REFER TO DRAWING SCHEDULE FOR GENERAL INFORMATION.
- VERIFY DIMENSIONS WITH ARCHITECTURAL DRAWINGS. PRECEDENCE OVER DIMENSIONS SHOWN ON THIS PLAN.
- LOWER FOOTINGS WHERE REQUIRED TO ACCOMMODATE PLUMBING, SLAB RECESSES, FISH GRACE, ETC. SHALL BE SHOWN IN ARCHITECTURAL AND PLUMBING DRAWINGS. REFER TO DETAILS S102 & S103.
- REFER TO GEOTECH REPORT FOR ADDITIONAL INFORMATION REGARDING SOIL UNDER BEAM AND FOUNDATIONS.
- S.C. TO COORDINATE FLOOR CONSTRUCTION WITH REQUIREMENTS ON ARCHITECTURAL DRAWINGS.
- ALL ANCHORS SHALL BE CAST IN PLACE FISH BOLT (TYP. U.S.A.O.).
- HOLD DOWN LOCATIONS SHOWN ARE APPROXIMATE. COORDINATE AND VERIFY EXACT HOLD DOWN ANCHOR LOCATIONS WITH ALL FINISH REQUIREMENTS.

SHEAR WALL SCHEDULE

MARK	DESCRIPTION	REINFORCING	HEIGHT
SW1	20'-0" SHEAR WALL	#5 @ 12" EACH WAY, T&B	10'-0"
SW2	20'-0" SHEAR WALL	#5 @ 12" EACH WAY, T&B	10'-0"
SW3	20'-0" SHEAR WALL	#5 @ 12" EACH WAY, T&B	10'-0"



COLUMN / BASE PLATE / ANCHOR ROD SCHEDULE										
MARK	COLUMN SIZE	TYPE	A	B	C	D	E	F	G	REMARKS
C1	HSS5x5x3/8	1	12"	12"	12"	45"	45"	12"	12"	
C2	HSS5x5x1/2	1	12"	12"	12"	45"	45"	12"	12"	

** ASTM F1554 (36 ksi) ANCHOR BOLTS (RODS OR HEADED BOLTS) W/ (2) - FLAT WASHERS AND (2) HEAVY HEX NUTS (TYP.)

- (2'Wx1'H) CONCRETE FOOTING
- (8" THK) CONCRETE STEM WALL (2'8"H)
- (10" THK) CONCRETE FROST WALL (3'H)
- (6"Wx8"H) CONCRETE WALL CURB
- (3' SQ.x1'H) TYPE F1, CONCRETE FOOTING PAD
- (6'6" SQ.x1'H) TYPE F2, CONCRETE FOOTING PAD
- (9'6"Wx6'6"x1'H) TYPE F3, CONCRETE FOOTING PAD
- (1'8" SQ.x2'H) TYPE P1, CONCRETE PEDESTAL
- (1'8" SQ.x2'H) TYPE P2, CONCRETE PEDESTAL
- (6" THK) CONCRETE FROST SLAB ON GRADE
- (4" THK) CRUSHED STONE BASE W/ VAPOR BARRIER
- HSS5x5x3/8 COLUMN. (14'H) W/ (12"x12"x3/4") BASE PLATE
- HSS5x5x1/2 COLUMN. (14'H) W/ (12"x12"x3/4") BASE PLATE
- (2) (2x6) WOOD STUD POST (13'6"H) W/ SIMPSON HDU8

C
A
RO
380
STE
CIN
S
PO
NO.



SEAL

CONSULTANTS

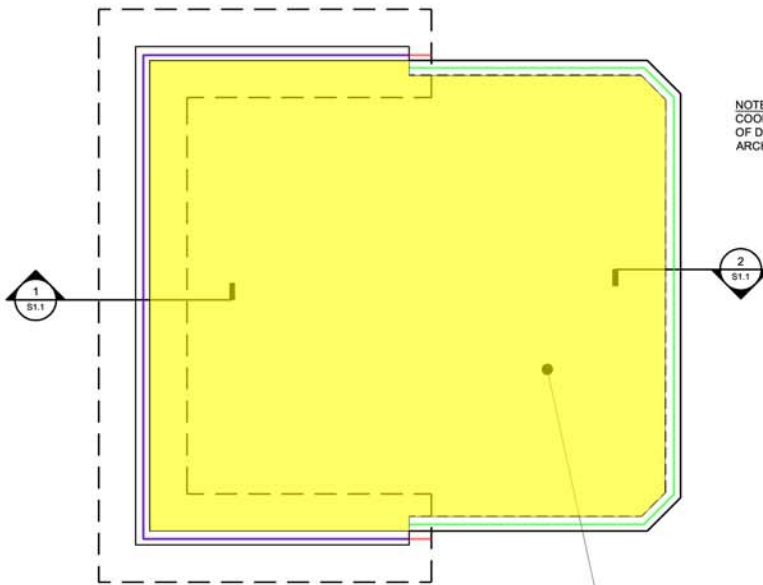
OWNER

LOCATION

DATE

REVISIONS

SHEET

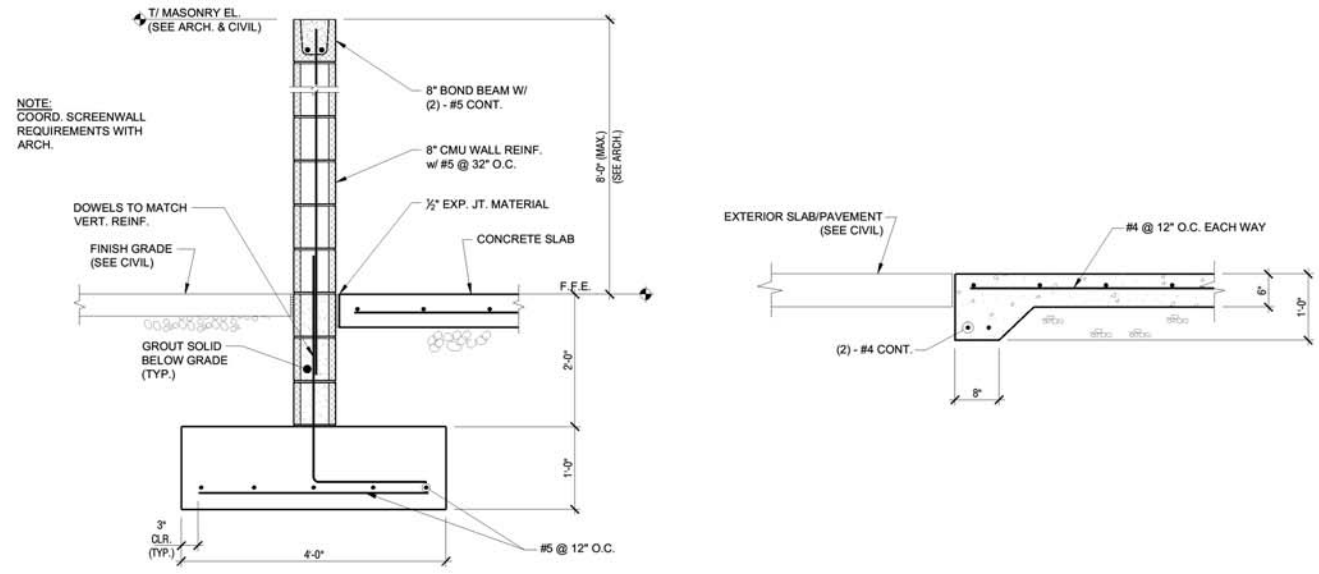


NOTE:
COORDINATE LOCATION & DIMENSIONS
OF DUMPSTER ENCLOSURE & PAD WITH
ARCH. & CIVIL.

6" CONCRETE SLAB, REINFORCE W/ #4 BARS
@ 12" O.C. EACH WAY ON 6" COMPACTED
GRANULAR FILL. SEE ARCH./CIVIL DRAWINGS
FOR SLAB EXTENTS AND REQUIRED FINISH.
PLACE BARS AT MID-HEIGHT OF SLAB.
(SEE GEOTECH REPORT FOR SOIL PREP.)

DUMPSTER PLAN

SCALE: 1/4" = 1'-0"



NOTE:
COORD. SCREENWALL
REQUIREMENTS WITH
ARCH.

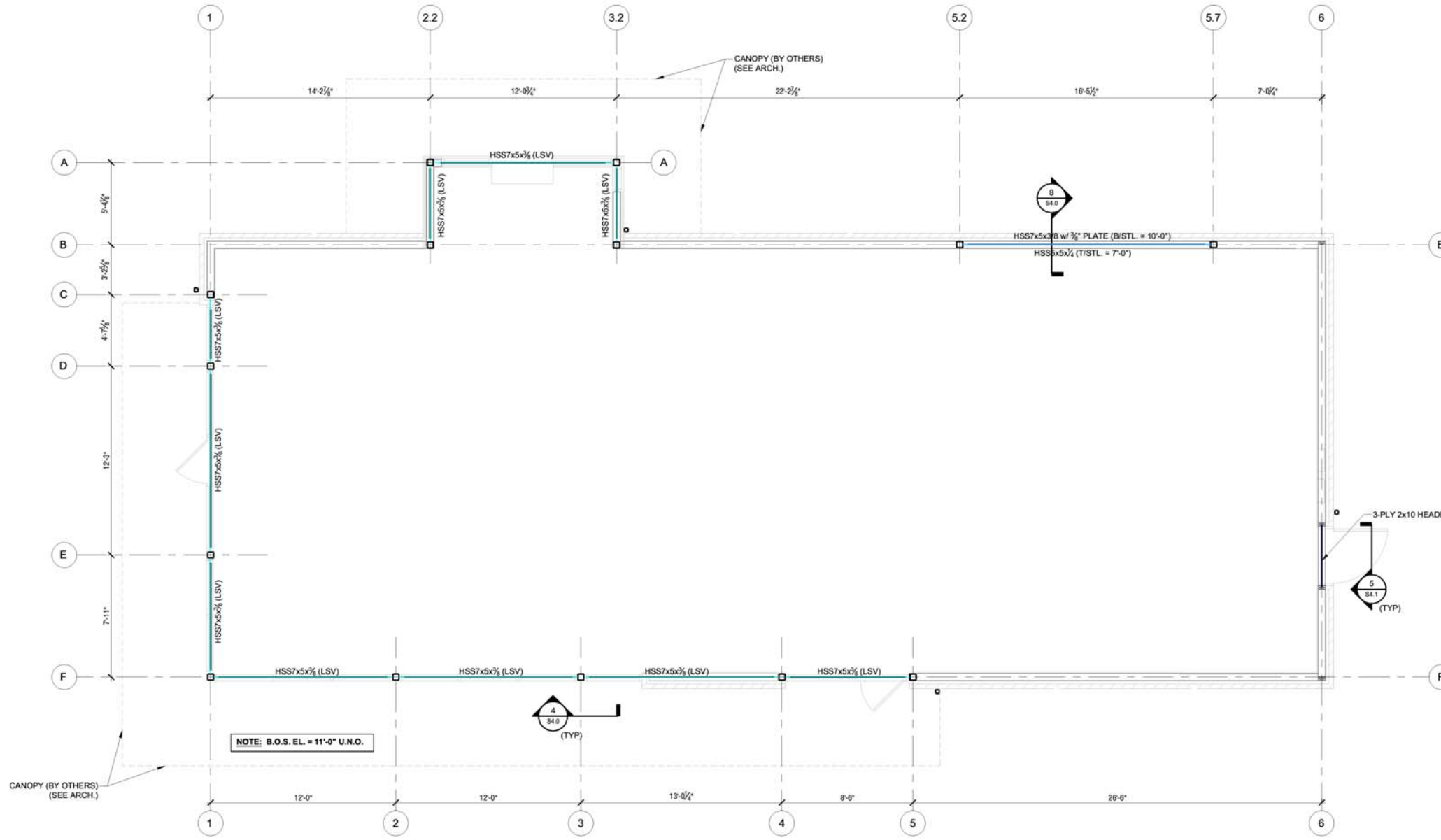
- (4'Wx1'H) DUMPSTER CONCRETE FOOTING
- (8"Wx12"H) DUMPSTER THICKEND EDGE CONCRETE SLAB FOOTING
- (6" THK) DUMPSTER CONCRETE PAD
- (8" THK) DUMPSTER CMU WALL (10'H)

	48.1 FT
	43.2 FT
	482.4 SQ FT
	46.1 FT

This drawing and the design shown is the property of the architect. The reproduction, copying or use of this drawing without their written consent is prohibited and any infringement will be subject to legal action.

DUMPSTER PLAN

S1.1



CANOPY / LOW FRAMING PLAN

SCALE: 1/4" = 1'-0"

NOTE:
COORDINATE ALL STUD FRAMING
LOCATIONS W/ ARCH. (TYP.)

- FRAMING NOTES:**
- REFER TO DRAWING S0.0 & S0.1 FOR GENERAL NOTES AND DRAWING S4.0 THRU S4.1 FOR TYPICAL DETAILS.
 - SEE S2.1 FOR ROOF FRAMING PLAN & S5.0 FOR FRAMING ELEVATIONS.
 - VERIFY DIMENSIONS WITH ARCH. DRAWINGS. DIMENSIONS SHOWN ON ARCH. DRAWINGS TAKE PRECEDENCE OVER DIMENSIONS SHOWN ON THIS PLAN.

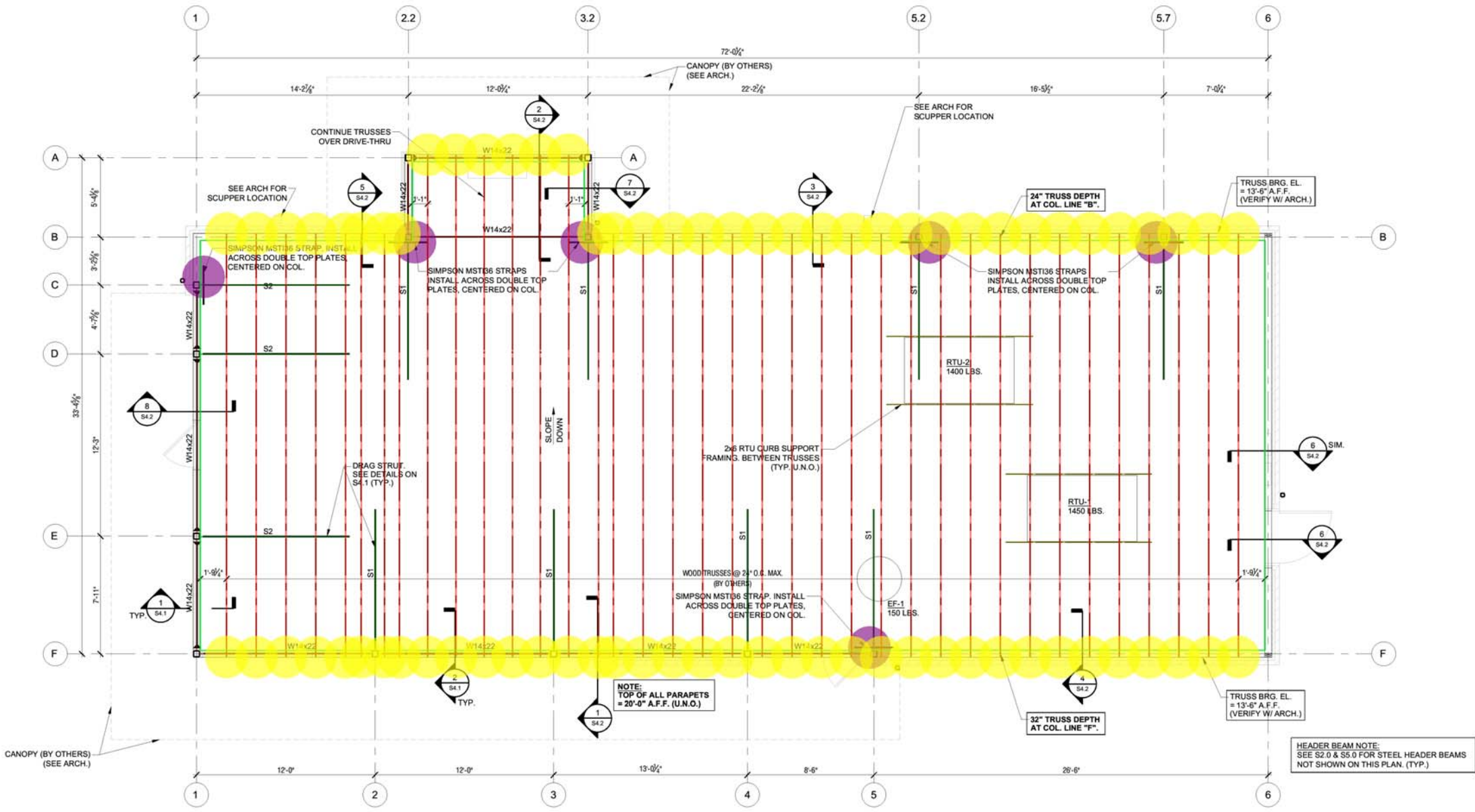
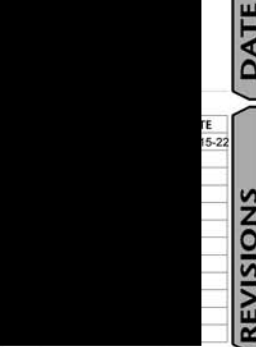
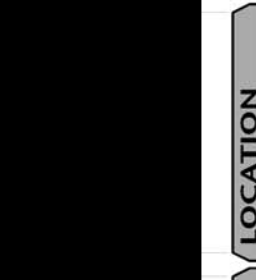
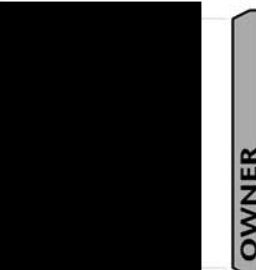
- HSS5x5x1/4
- HSS7x5x3/8
- (3) (2x10) BEAM

16.1 FT
104.9 FT
4.0 FT

LOW FRAMING PLAN

S2.0

SEAL
CONSULTANTS
OWNER
LOCATION
DATE
REVISIONS
SHEET



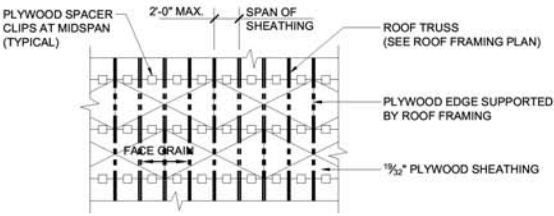
ROOF FRAMING PLAN
 SCALE: 1/4" = 1'-0"

TRUSS NOTES:

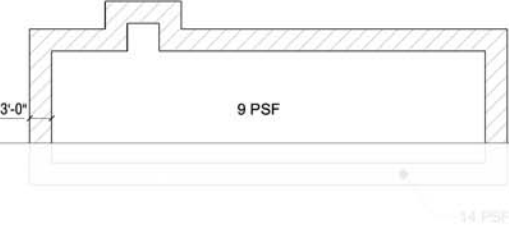
- DESIGN OF TRUSSES AND THEIR CONNECTION TO EACH OTHER AND TO THE STRUCTURE IS A PERFORMANCE SPECIFICATION. CONTRACTOR IS ADVISED TO CONSULT WITH TRUSS MANUFACTURER PRIOR TO SUBMITTING BID PRICE.
- TRUSS MANUFACTURER'S ENGINEER IS RESPONSIBLE FOR CALCULATION OF ALL LOADS ON TRUSSES AND THE DESIGN OF ALL TRUSSES.
- TRUSS MANUFACTURER SHALL ALSO DESIGN AND PROVIDE ALL HARDWARE NECESSARY FOR ALL CONNECTIONS.
- CONNECTIONS MAY REQUIRE SPECIALLY FABRICATED AND DESIGNED HARDWARE TO COMPLY WITH THE DESIGN INTENT. CONTRACTOR TO COORDINATE REQUIREMENTS FOR ALL CONNECTION OF TRUSSES WITH TRUSS MANUFACTURER.
- REFERENCE GENERAL NOTES AND SPECIFICATIONS FOR ADDITIONAL REQUIREMENTS.
- VERIFY ALL SLOPES WITH ARCHITECTURAL DRAWINGS.

FRAMING NOTES:

- REFER TO DRAWING S0.0 & S0.1 FOR GENERAL NOTES AND DRAWING S4.0 THRU S4.1 FOR TYPICAL DETAILS.
- FINISHED FLOOR ELEV. = REFERENCE ARCH. & CIVIL DRAWINGS.
- VERIFY DIMENSIONS WITH ARCH. DRAWINGS. DIMENSIONS SHOWN ON ARCH. DRAWINGS TAKE PRECEDENCE OVER DIMENSIONS SHOWN ON THIS PLAN.
- ROOF DECKING SHALL BE APA RATED 1/2" THICK EXTERIOR GRADE PLYWOOD SHEATHING WITH A MINIMUM SPAN RATING OF 40/20. (TYP. - U.N.O.)
- TRUSS BEARING ELEVATION = 13'-6" ABOVE FINISH FLOOR, U.N.O. (COORDINATE W/ ARCHITECTURAL)
- ALL TRUSSES SHALL BE SPACED AT 2'-0" O.C. MAX. (U.N.O.)
- SEE S1.0 FOR SHEARWALL LOCATIONS AND S4.0-S4.1 FOR SHEARWALL DETAILS.
- PROVIDE DOUBLE STUDS (MIN.) ON EACH SIDE OF JAMBS, HEADER AND LINTEL LOCATIONS. (TYPICAL - U.N.O.)
- ALL BLOCKING & BRACING SHALL BE JOB CUT AND FRAMED.
- PROVIDE CONTINUOUS DOUBLE TOP PLATE AT TRUSS BEARING ELEVATION AT ALL LOAD BEARING AND EXTERIOR WALLS. SPLICE PER DETAIL 2/S4.0.
- LOCATION OF ROOFTOP MECHANICAL EQUIPMENT SHOWN IS APPROXIMATE. G.C. MUST COORDINATE FINAL EQUIPMENT LOCATIONS AND WEIGHTS BETWEEN M.E.P. AND TRUSS MANUFACTURER.



- NOTES:**
- W14x22
 - L2x2x1/4
 - (2x4) 3'L BRACE @ 12" O.C W/ SIMPSON A34 CLIP
 - (2x6) WOOD BLOCKING
 - (2) (2x6) BEAM
 - PRE-ENGINEERED ROOF TRUSS
 - SIMPSON MST36 STRAP
 - SIMPSON H8



TRUSS NET UPLIFT PLAN
 (NOMINAL PRESSURES)

NOTE: SEE ARCH. FOR EXTERIOR FINISH. SOME NOT SHOWN FOR CLARITY.

NOTE: COORDINATE ALL STUD FRAMING LOCATIONS WITH ARCH. (TYP.)

TRUSS NOTE: ACTUAL TRUSS WEB CONFIGURATION IS BY TRUSS MANUFACTURER AND MAY DIFFER FROM WHAT IS SHOWN IN THESE DRAWINGS.

100.4 FT	105.7 FT	65.9 FT	208.9 FT	39.3 FT	1,085.6 FT	6.0	74.0
----------	----------	---------	----------	---------	------------	-----	------

ROOF FRAMING PLAN

S2.1

ARCHITECTS
 SEAL
 CONSULTANTS
 OWNER
 LOCATION
 DATE
 REVISIONS
 SHEET