

Consultant

NO.	REVISION	DATE	BY	APP'D

ISSUED

NO.	REVISION	DATE	BY	APP'D

Permit/Seal

TRAVIS J. FLEDDERMAN, P.E.
 FLORIDA LICENSE NO. 92341

Client/Project
 QUAY VENTURES, LLC
 QUAY SARASOTA
 BLOCK 10
 SARASOTA COUNTY, FLORIDA

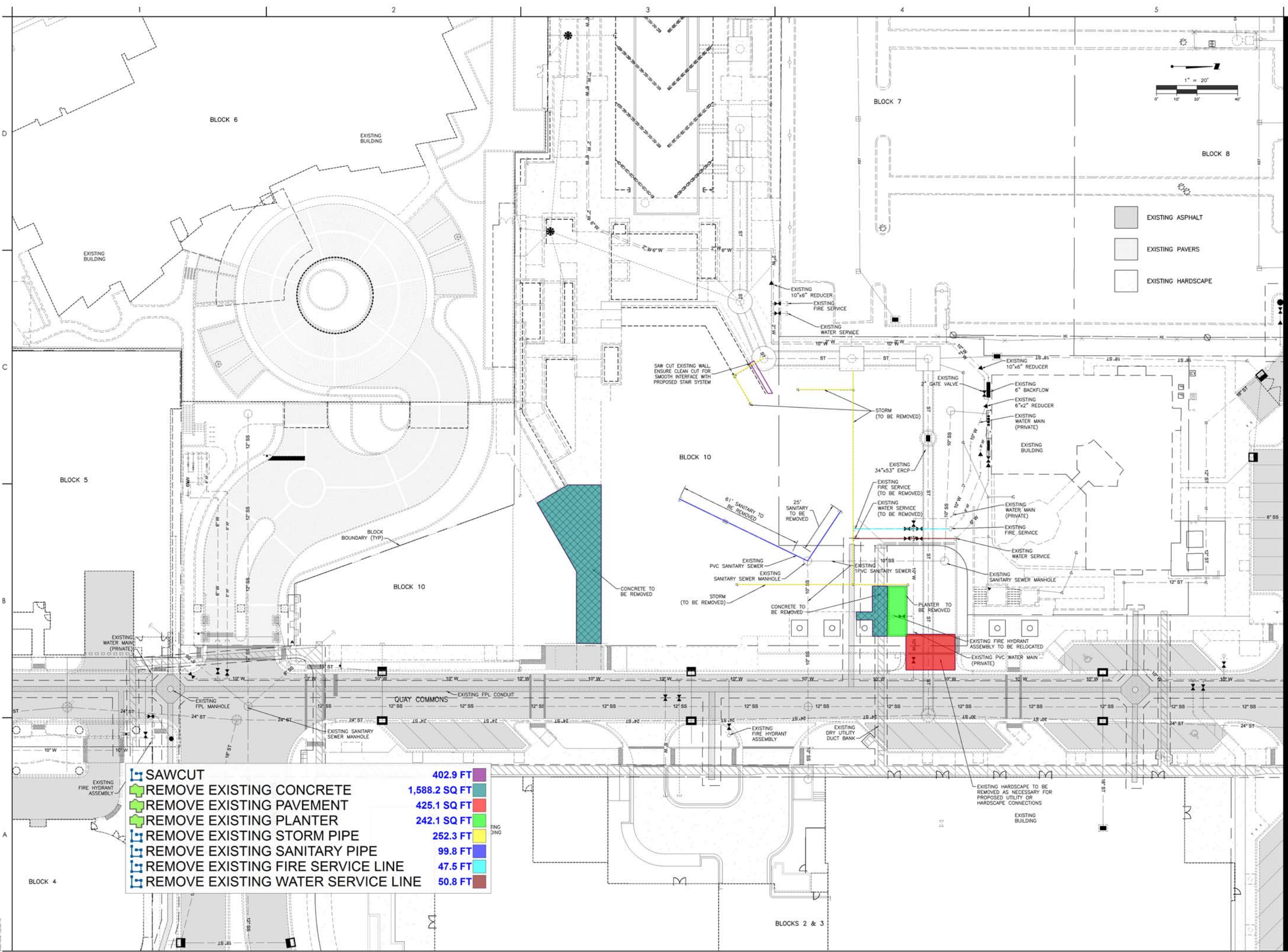
Project No.: 215616624
 File Name: 215616624-PC-1310D

Scale: 1" = 20'

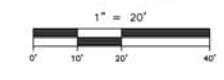
REV	DATE	BY	CHKD	APP'D

Title
 GRADING & DRAINAGE PLAN

Revision:
 Drawing No.
10



SAWCUT	402.9 FT
REMOVE EXISTING CONCRETE	1,588.2 SQ FT
REMOVE EXISTING PAVEMENT	425.1 SQ FT
REMOVE EXISTING PLANTER	242.1 SQ FT
REMOVE EXISTING STORM PIPE	252.3 FT
REMOVE EXISTING SANITARY PIPE	99.8 FT
REMOVE EXISTING FIRE SERVICE LINE	47.5 FT
REMOVE EXISTING WATER SERVICE LINE	50.8 FT



- EXISTING ASPHALT
- EXISTING PAVERS
- EXISTING HARDSCAPE

NO.	DATE	BY	APP'D	REVISION

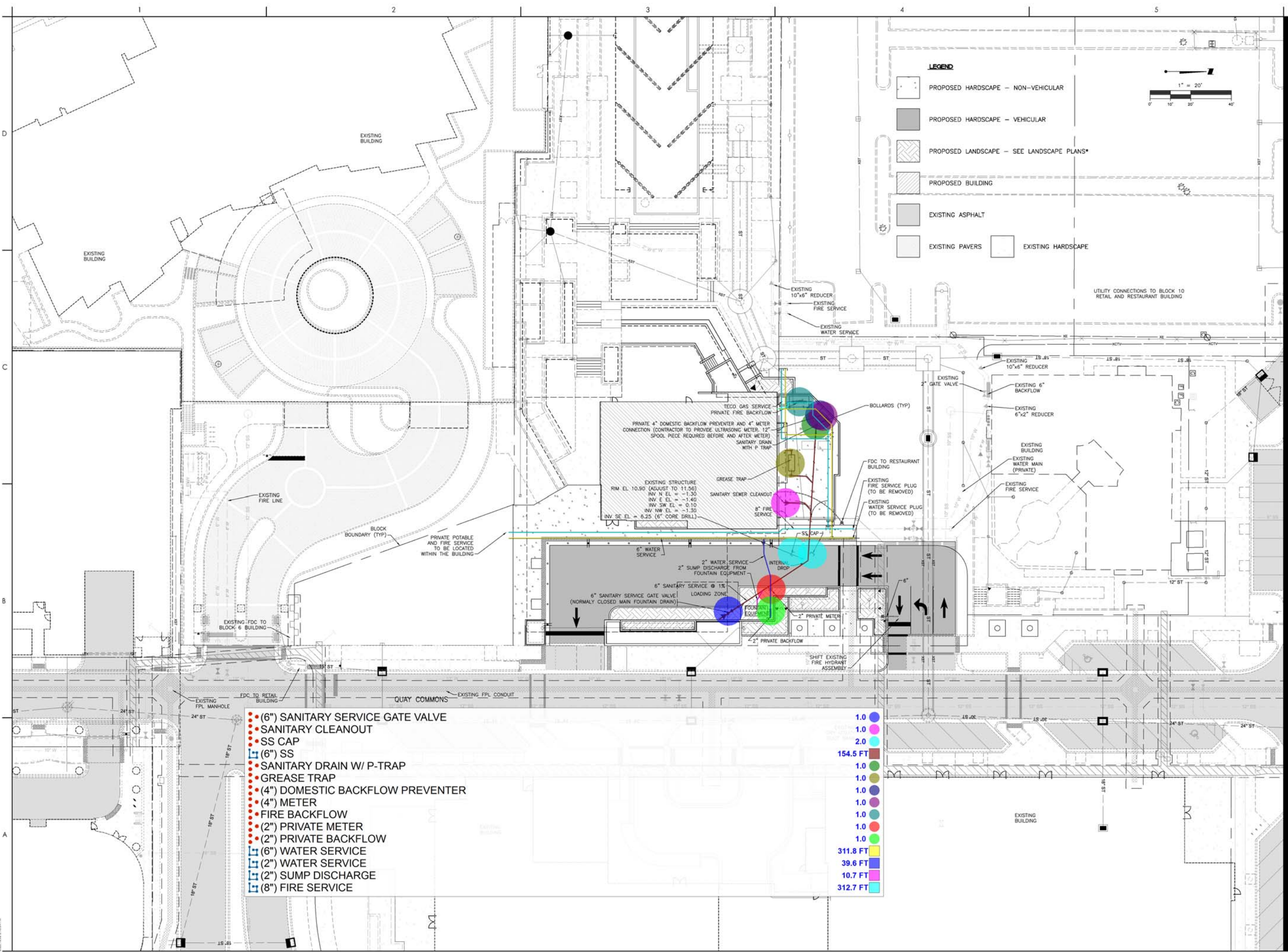
NO.	DATE	BY	APP'D	REVISION

Permit/Seal
 TRAVIS J. FLEDDERMAN, P.E.
 FLORIDA LICENSE NO. 82341

Client/Project
 QUAY VENTURES, LLC
 QUAY SARASOTA
 BLOCK 10
 SARASOTA COUNTY, FLORIDA

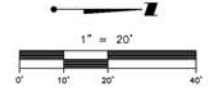
Project No.: 215616624
 File Name: 215616624-FPC-1010P
 Scale: 1" = 20'
 RVD: MTD: MOE: 2021/10/04
 Dwn: Dgn: Chd: YYYYMMDD

Title
 EXISTING - DEMO SITE PLAN
 Revision:
 Drawing No.
7




LEGEND

- PROPOSED HARDSCAPE - NON-VEHICULAR
- PROPOSED HARDSCAPE - VEHICULAR
- PROPOSED LANDSCAPE - SEE LANDSCAPE PLANS*
- PROPOSED BUILDING
- EXISTING ASPHALT
- EXISTING PAVERS
- EXISTING HARDSCAPE



- (6") SANITARY SERVICE GATE VALVE
- SANITARY CLEANOUT
- SS CAP
- (6") SS
- SANITARY DRAIN W/ P-TRAP
- GREASE TRAP
- (4") DOMESTIC BACKFLOW PREVENTER
- (4") METER
- FIRE BACKFLOW
- (2") PRIVATE METER
- (2") PRIVATE BACKFLOW
- (6") WATER SERVICE
- (2") WATER SERVICE
- (2") SUMP DISCHARGE
- (8") FIRE SERVICE

- 1.0
- 1.0
- 2.0
- 154.5 FT
- 1.0
- 1.0
- 1.0
- 1.0
- 1.0
- 1.0
- 1.0
- 311.8 FT
- 39.6 FT
- 10.7 FT
- 312.7 FT



Stantec Consulting Services Inc.
6900 Professional Parkway East
Sarasota, FL 34240-8414
Tel: (941) 707-6000

Consultant

NO.	DATE	BY	APP'D	REVISION

Permit/Seal

TRAVIS J. FLEDDERMAN, P.E.
FLORIDA LICENSE NO. 82341

Client/Project
QUAY VENTURES, LLC

QUAY SARASOTA
BLOCK 10
SARASOTA COUNTY, FLORIDA

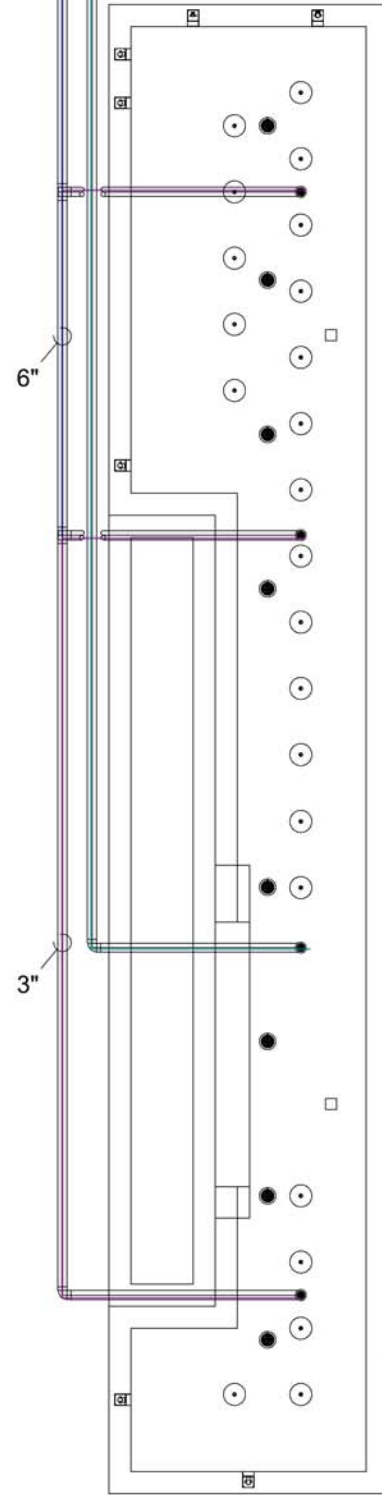
Project No.: 215616624
File Name: 215616624-FC-131P
Scale: 1" = 20'

RVD	WTD	MOE	2021/10/04
Dwn	Dgn	Chd	YYYYMMDD

Title
MASTER UTILITY PLAN

Revision:
Drawing No.
11

3" MAIN DRAIN
51 GPM @ 2.24 F.P.S
6" FEATURE MAIN DRAIN
345 GPM @ 3.87 F.P.S



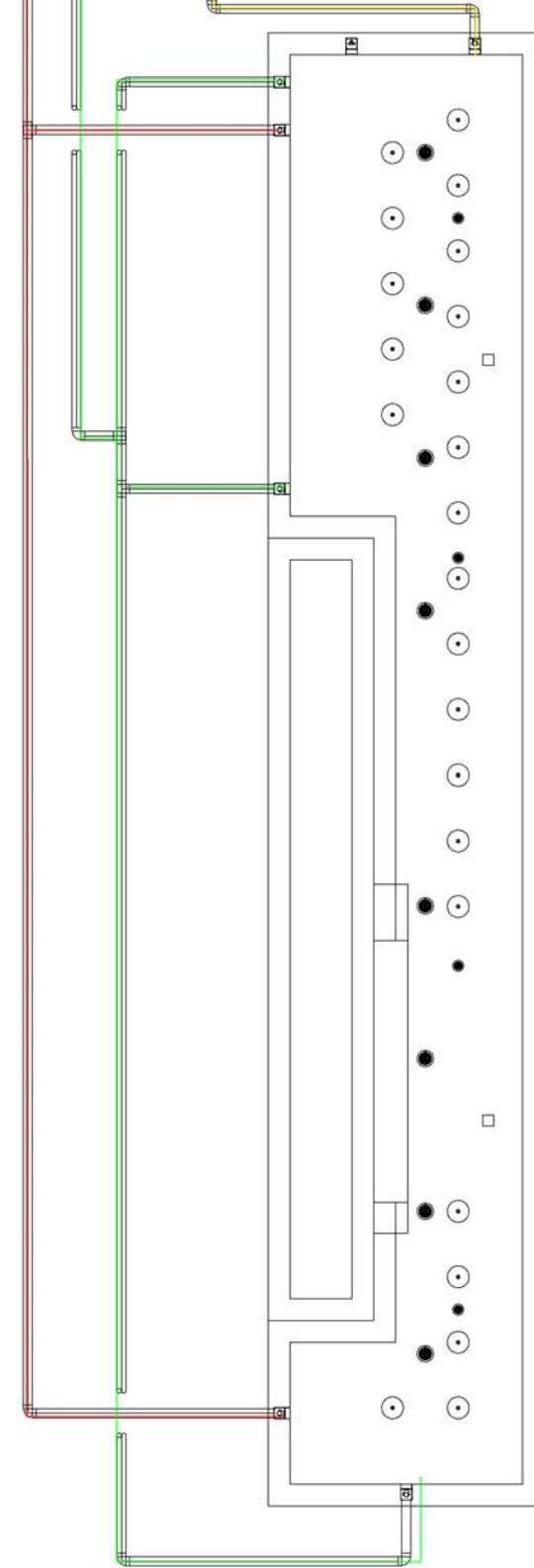
	(6") FEATURE MAIN DRAIN	27.4 FT
	(3") FEATURE MAIN DRAIN	67.2 FT
	(3") MAIN DRAIN	55.7 FT
	(2") SKIMMER	94.9 FT
	(2") FILTER WATER RETURN	129.2 FT
	(2") OVERFLOW BASIN DRAIN	21.0 FT

1 MAIN DRAIN & FEATURE
MAIN DRAIN PIPING LAYOUT

PIPING LAYOUT

SCALE: 1/4" = 1'

2" SKIMMER
31 GPM @ 2.92 F.P.S
2" FILTER WATER RETURN
51 GPM @ 4.95 F.P.S
2" OVERFLOW/ BASIN DRAIN TO
NEAREST AUTHORIZED OUTFALL



2 SKIMMER, OVERFLOW, &
RETURN PIPING LAYOUT

PIPING LAYOUT

SCALE: 1/4" = 1'

DRAWINGS PROVIDED BY:



14884 INDIGO LAKES DRIVE
NAPLES, FL 34119
(239) 784-3839
WWW.ADAUQUATIC.COM
CERT. OF AUTH. # 28463

THIS DOCUMENT AND THE IDEAS, RENDERINGS AND OTHER CONTENTS CONTAINED HEREIN ARE THE SOLE PROPERTY OF ADAU AQUATIC ENGINEERING LLC AND MAY NOT BE DISSEMINATED, COPIED, REPRODUCED, OR OTHERWISE USED WITHOUT PRIOR WRITTEN CONSENT OF ADAU AQUATIC ENGINEERING LLC. THESE DRAWINGS ARE NOT VALID FOR CONSTRUCTION UNLESS LABELED "FOR CONSTRUCTION". ADAU AQUATIC ENGINEERING LLC RETAINS ALL COMMON LAW, STATUTORY AND OTHER RESERVED RIGHTS INCLUDING THE COPYRIGHT THEREIN.

PROJECT INFORMATION

QUAY COMMONS FOUNTAIN
FEATURE
SARASOTA, FLORIDA

SEAL

STEVEN D. VAUGHN
FLORIDA P.E. # 33263

ISSUES

DATE	DESCRIPTION

REVISIONS

#	DATE	DESCRIPTION
1	04/01/2020	

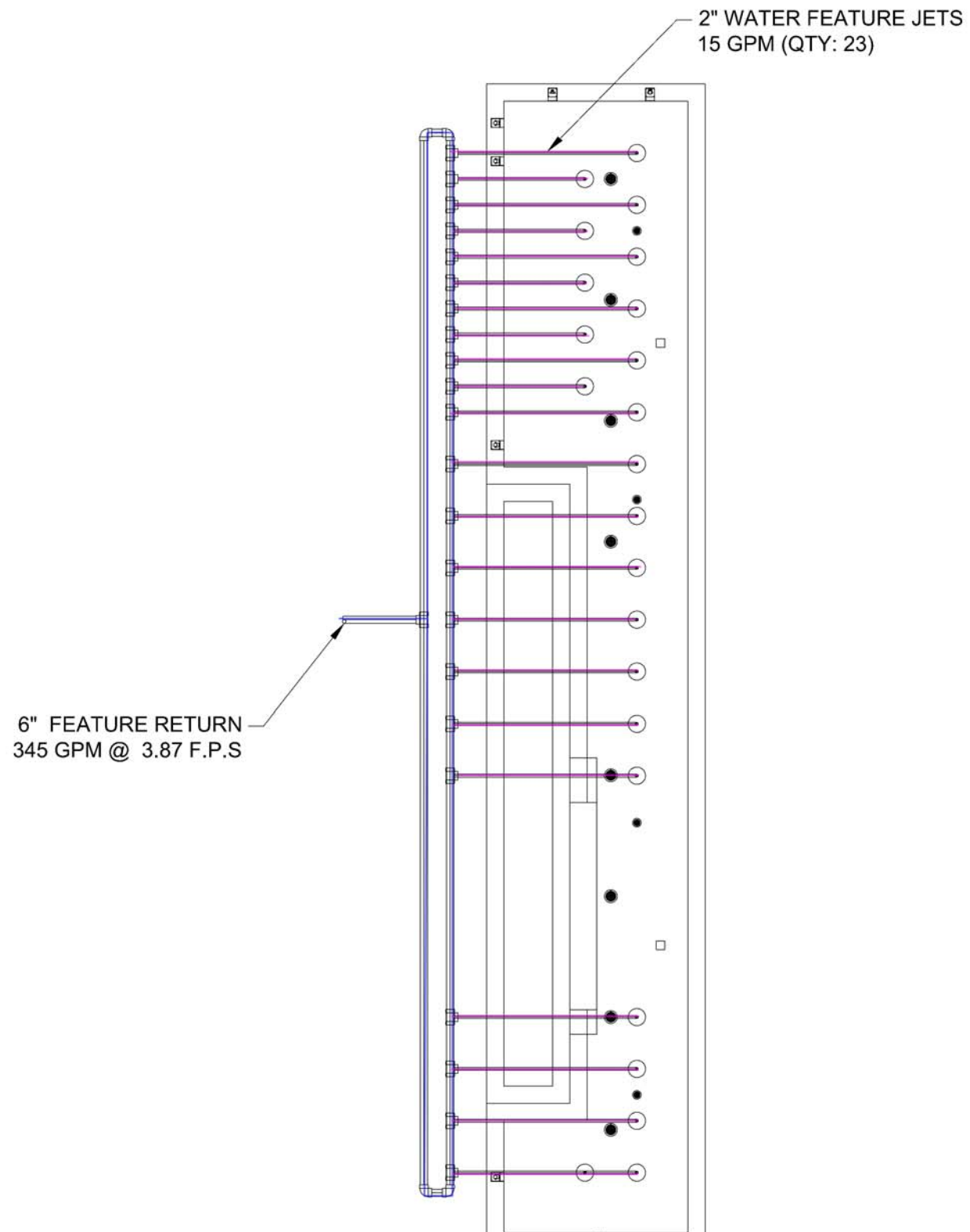
100% CD

DRAWING INFORMATION



PIPING LAYOUT 1

DRAWN	APPROVED	PROJECT #
D.L.S.	B.J.A.	20-002

PL1.10

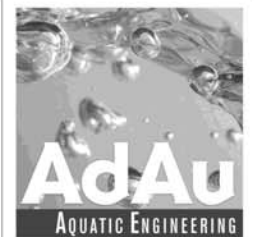


 (6") FEATURE RETURN
 (2") FEATURE WATER JETS

131.3 FT 
 220.4 FT 

1 WATER FEATURE PIPING LAYOUT
 PIPING LAYOUT SCALE: 1/4" = 1'

DRAWINGS PROVIDED BY:



14884 INDIGO LAKES DRIVE
 NAPLES, FL 34119
 (239) 784-3839
 WWW.ADAUQUATIC.COM
 CERT. OF AUTH. # 28463

PROJECT INFORMATION

**QUAY COMMONS FOUNTAIN
 FEATURE
 SARASOTA, FLORIDA**

SEAL

STEVEN D. VAUGHN
 FLORIDA P.E. # 33263

ISSUES

DATE	DESCRIPTION

REVISIONS

#	DATE	DESCRIPTION
△		

DRAWING INFORMATION

PIPING LAYOUT 2

DRAWN	APPROVED	PROJECT #
D.L.S	B.J.A.	20-002

PL1.11

THIS DOCUMENT AND THE IDEAS, RENDERINGS AND OTHER CONTENTS CONTAINED HEREIN ARE THE SOLE PROPERTY OF ADAU AQUATIC ENGINEERING LLC AND MAY NOT BE DISSEMINATED, COPIED, REPRODUCED, OR OTHERWISE USED WITHOUT PRIOR WRITTEN CONSENT OF ADAU AQUATIC ENGINEERING LLC. THESE DRAWINGS ARE NOT VALID FOR CONSTRUCTION UNLESS LABELED "FOR CONSTRUCTION". ADAU AQUATIC ENGINEERING LLC RETAINS ALL COMMON LAW, STATUTORY AND OTHER RESERVED RIGHTS INCLUDING THE COPYRIGHT THERE TO. 04/01/2020 100% CD

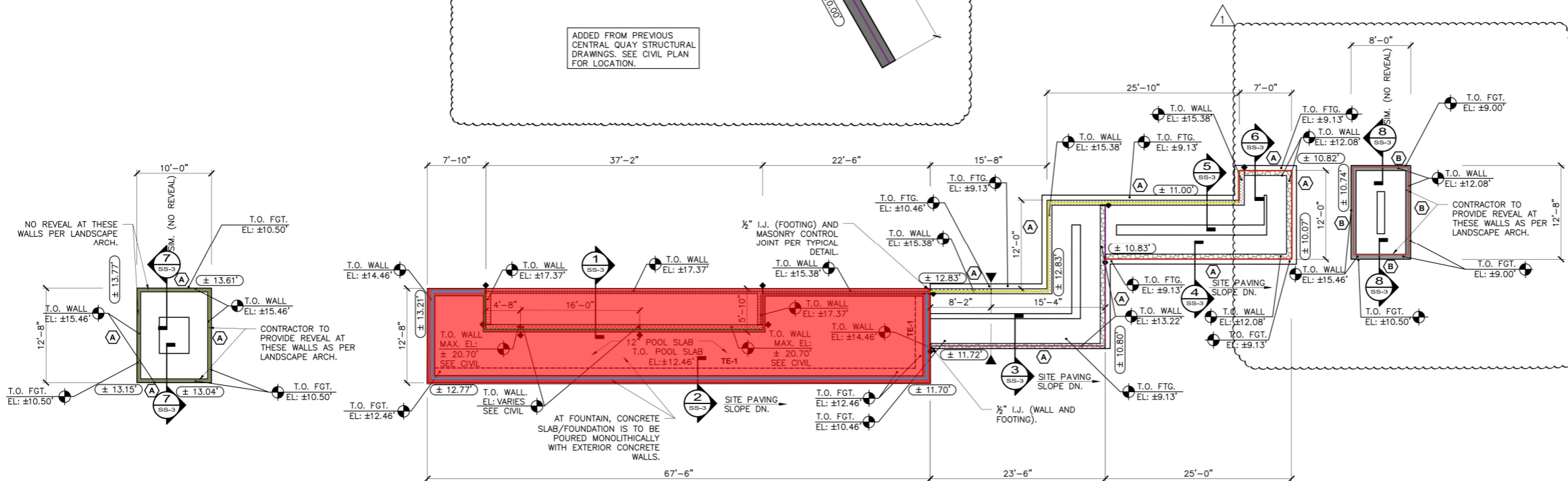
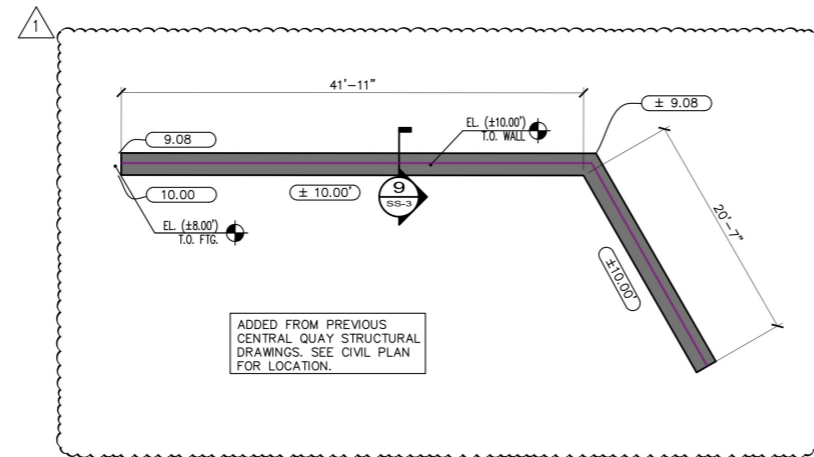
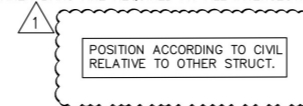
FOUNDATION PLAN NOTES

- VERIFY ALL DIMENSIONS AND ELEVATIONS WITH EXISTING CONDITIONS, CIVIL AND LANDSCAPE ARCHITECTURAL DRAWINGS. SEE CIVIL AND LANDSCAPE ARCHITECTURAL DRAWINGS FOR ADDITIONAL INFORMATION.
- INDICATES 8" CMU RETAINING WALL W/ (1)#5 VERT. IN GROUT FILLED CELL AT ENDS OF WALL, CHANGES IN HEIGHT, WALL INTERSECTIONS, AT CORNERS & AT 24" O.C. (MAX SPACING). ALL CELLS GROUTED SOLID (f_m=2500 PSI).
- INDICATES 8" CMU RETAINING WALL ALL CELLS GROUTED SOLID W/ (1)#6 VERT. IN GROUT FILLED CELL AT ENDS OF WALL, CHANGES IN HEIGHT, WALL INTERSECTIONS, AT CORNERS & AT 24" O.C. (MAX SPACING). ALL CELLS GROUTED SOLID (f_m=2500 PSI).
- INDICATES 8" CMU RETAINING WALL W/ (1) #6 VERT. IN GROUT FILLED CELL AT ENDS OF WALL, CHANGES IN HEIGHT, WALL INTERSECTIONS, AT CORNERS & AT 16" O.C. (MAX. SPACING). ALL CELL GROUTED SOLID. (f_m = 2500 PSI).
- INDICATES 8" CAST IN PLACE CONCRETE RETAINING WALL FOR REINFORCEMENT AND DIMENSIONS REFER TO SECTIONS ON SHEET SS-3.
- INDICATE 12" CAST IN PLACE CONCRETE RETAINING WALL FOR REINFORCEMENT AND DIMENSIONS REFER TO SECTIONS ON SHEET SS-3.
- PROVIDE 8" K.O. COURSE AT TOP OF ALL MASONRY WALLS W/ (1)#5 CONT. (IF TOP OF WALL SLOPES, PROVIDE 8" CONC. CAP W/ (1)#5 MAY BE USED WITH MIN 8" HEIGHT, STEP BOTTOM OF CAP AS REQUIRED).
- FOR ADDITIONAL SITE PAVING, SLOPES, DROPS, AND DRAIN LOCATIONS, SEE LANDSCAPE ARCHITECTURAL AND CIVIL DRAWINGS.
- TOP OF FOOTING ELEVATION SHALL BE AS NOTED ON PLAN.
- SEE TYPICAL MASONRY WALL AND CONCRETE WALL CONTROL JOINT DETAILS FOR ADDITIONAL REQUIREMENTS. WALL CONTROL JOINTS DO NOT PASS THROUGH FOOTING. SEE CIVIL FOR LOCATIONS.
- SEE THIS DRAWING (SS-2) FOR FOOTING SCHEDULE. SEE DRAWING SS-1 FOR STRUCTURAL NOTES AND TYPICAL DETAILS.
- INDICATES 16" FOOTING STEP. SEE PLAN FOR ELEVATION ON THIS DRAWING (SS-2). SEE TYPICAL DETAIL ON SS-1.
- INDICATES STEP IN WALL HEIGHT. SEE PLAN AND SECTIONS FOR WALL ELEVATION ON SS-2 AND SS-3.
- INDICATES APPROXIMATE TOP OF GRADE AS PER CIVIL. SEE CIVIL FOR MORE INFORMATION.
- PROVIDE XYPEX CONCRETE MIX ADDITIVE FOR FOUNTAIN SLAB/FOUNDATION AND CONCRETE WALL FRAMING. XYPEX DOSAGE TO BE AS REQUIRED BY SUPPLIER. SUBMIT WITH PROPOSED CONCRETE MIX DESIGNS FOR FINAL APPROVAL BY E.O.R.
- ADAU PLANS FOR ALL POOL FEATURES, INCLUDES OVERFLOW AND OTHER FEATURES THAT ARE TO BE INSTALLED WITHIN THE STRUCTURAL ITEMS HEREIN.
- TOP OF WALL ELEVATIONS INDICATED ON PLAN FOR MASONRY WALLS INCLUDE DEPTH OF 3" PRECAST, PRE-ENGINEERED CONCRETE CAP. SEE CIVIL/LANDSCAPE ARCHITECTURE PLANS FOR ADDITIONAL INFORMATION.
- TOP OF WALL ELEVATIONS INDICATED ON PLANS FOR CONCRETE WALLS INDICATE TOP OF CAST-IN-PLACE CONCRETE WALL.

FOOTING SCHEDULE				
MARK	SIZE W x L	DEPTH	REINFORCING	REMARK
(A)	4'-0" x CONT.	12"	6#5 BARS CONT. #5 @ 12" O.C. TRANSVERSE TOP.	-
(B)	3'-6" x CONT.	12"	6#5 BARS CONT. #5 @ 12" O.C. TRANSVERSE TOP.	-
TE-1	2'-0" x CONT.	36"	3 #5 CONT. TOP AND BOT. PROVIDE #3 STIRRUPS AT 18" O.C.	-

FOOTING SCHEDULE NOTES:

- CORNER BARS ARE REQUIRED AT ALL INTERSECTING FOOTING.



FOUNDATION PLAN

SCALE: 1/8" = 1'-0"



Revision	By	Appd	YYYY.MM.DD
1	MRD	ARW	2022.10.28
2	VRS	VRS	2020.04.03
3	ARW	ARW	2020.04.03

Permit/Seal

10/28/2022
ENGINEER OF RECORD
ANTHONY R. WILSON
FL P.E. # 79451

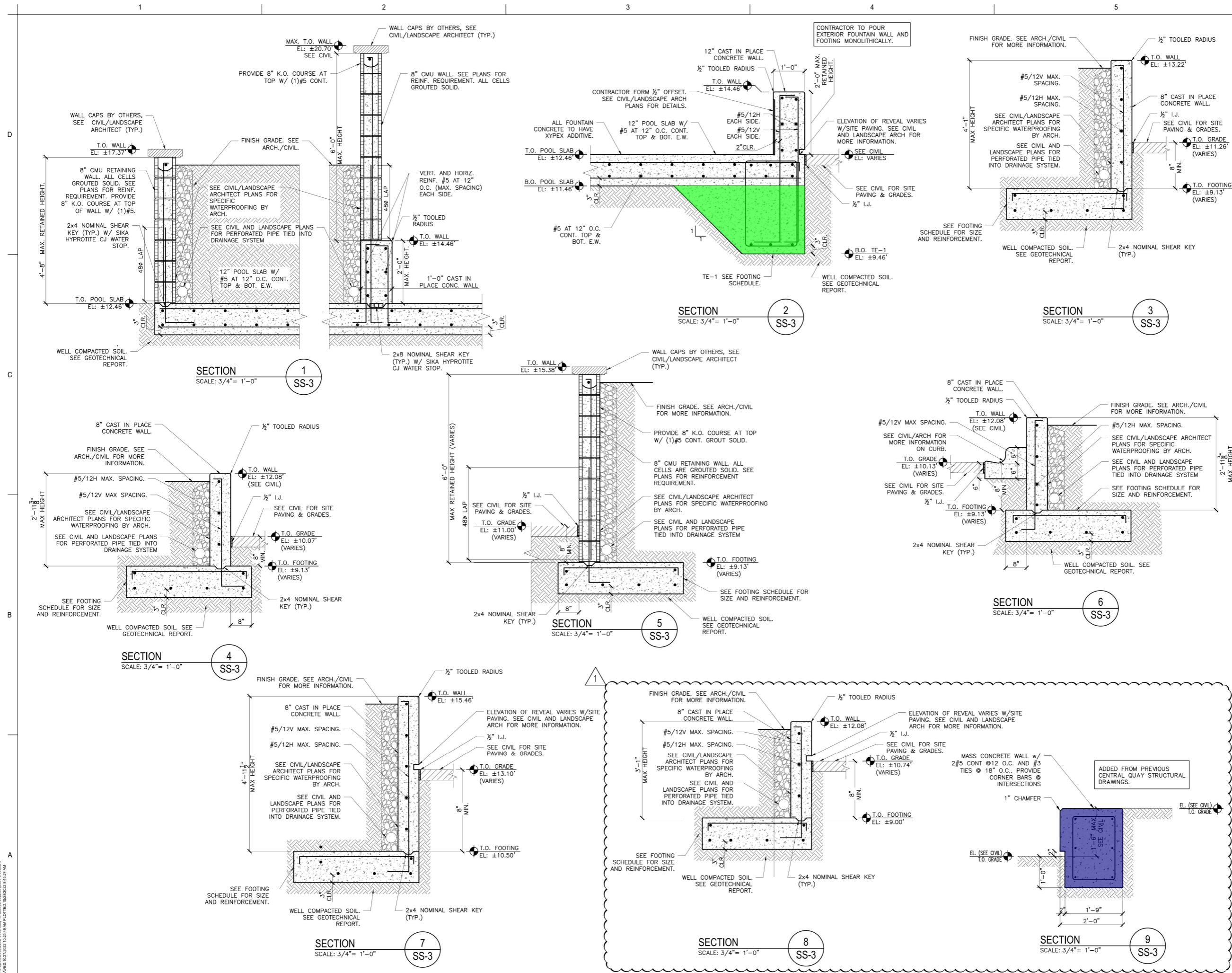
Client/Project
QUAY VENTURE, LLC

STREETSCAPE/
CENTRAL QUAY

SARASOTA, FLORIDA

Sheet Title
FOUNDATION PLAN

Project No. 215611950-12L Scale AS NOTED
Revision Sheet Drawing No.
of ## SS-2



Wilson Structural Consultants, Inc.
6731 PROFESSIONAL PKWY WEST, SARASOTA, FL 34238
TEL: (941) 907-4789 FAX: (941) 907-6576
FILE: 22DW-0680
Cert. of Authorization #9099

Revision	By	Appd	YYYY.MM.DD
1	MRD	ARW	2022.10.28
2	By	Appd	YYYY.MM.DD
3	By	Appd	2020.04.03
4	By	Appd	YYYY.MM.DD

File Name: SS-3 SECTIONS VRS VRS ARW YYYY.MM.DD
Dwn. Dsgn. Chkd. YYYY.MM.DD

Permit/Seal

10/28/2022
ENGINEER OF RECORD
ANTHONY R. WILSON
FL P.E. # 79451

Client/Project
QUAY VENTURE, LLC

**STREETSCAPE/
CENTRAL QUAY**

SARASOTA, FLORIDA

Sheet Title
SECTIONS

Project No. 215611950-12L Scale AS NOTED
Revision Sheet Drawing No.
of ## **SS-3**

W:\Projects\2022\22DW-0680\Drawings\Arch\22DW-0680-SS-3.dwg
 PLOTTED: 10/26/2022 10:26:41 AM PLOT FILED: 10/26/2022 10:27:57 AM